

Product datasheet for MR217582

Pcbp3 (NM_021568) Mouse Tagged ORF Clone

Product data:

| | |
|---------------------------|---|
| Product Type: | Expression Plasmids |
| Product Name: | Pcbp3 (NM_021568) Mouse Tagged ORF Clone |
| Tag: | Myc-DDK |
| Symbol: | Pcbp3 |
| Synonyms: | AlphaCP-3 |
| Mammalian Cell Selection: | Neomycin |
| Vector: | pCMV6-Entry (PS100001) |
| E. coli Selection: | Kanamycin (25 ug/mL) |
| ORF Nucleotide Sequence: | >MR217582 representing NM_021568 Red=Cloning site Blue=ORF Green=Tags(s) |

TTTTGTAATACGACTCACTATAGGGCGCCGGGAATTCGTCGACTGGATCCGGTACCGAGGAGATCTGCCGCCGCGATCGCC

ATGGGGGAAGGTGACGCCATCTGGGCCACCCATCCTTCCTCACAGCACCCCTCGGCACCTTAAGCCACC
ACCCTGAGCTACATTTGGAGGGAAGATGGAATCTAAGGTCTCGGAAGGTGGCCTGAACGTAACCCTGAC
CATCCGCCTACTGATGCATGGAAGGAAGTTGGAAGCATCATCGGAAGAAAGGAGAAACAGTAAAGAAG
ATGCGTGAAGAGAGTGGCGCCAGGATCAACATCTCAGAGGGAAACTGCCAGAGAGAATCGTTACAATCA
CAGGCCAACTGACGCCATCTTCAAGGCCTTTGCTATGATCGCGTACAAGTTTGAGGAGGACATCATTAA
TTCCATGAGCAACAGCCCTGCCACCAGCAAGCCTCCAGTGACACTGCGACTAGTGGTCCCTGCCAGCCAG
TGTGGGTCCCTGATCGGCAAAGGTGGCTCCAAGATCAAGGAGATCCGGGAGTCCACAGGTGCTCAGGTCC
AGGTGGCAGGTGACATGCTGCCAACTCCACAGAGCGGGCAGTACTATCTCAGGGACCCAGACGCCAT
CATCCAGTGTGTGAAACAGATCTGTGTGGTCACTGCTGGAGTCCCCACCGAAAGGTGCCACCATTCCTAC
CGCCAAAGCCCGCTCCACCCCTGTCAATTTTGCAGGTGGTCAAGCCTACACAATCCAGGGACAGTACG
CCATCCCCACCCAGATCAGTTGACCAAGCTCCACCAGTTGGCCATGCAGCAAACCCCTTTCCTCCCT
CGGACAGACCAACCCCGCTTTCCCGGAGAAAAGCTGCCTTTACTCTCCGAAGAAGCTCAAAATCTG
ATGGGCCAGTCGTCAAGTCTGGATGCCAGCCACCGGCCAGCACTATGAGCTCACCATTCCAATGATC
TTATAGGCTGCATAATTGGACGCCAAGGCACCAAAATCAATGAAATCCGACAGATGTCTGGAGCTCAGAT
CAAAATCGCCAATGCCACTGAAGGGTCTGTCAGAGCGCCAGATTACCATCACAGGGACCCAGCCAACATC
AGCCTTGCCAGTATCTCATCAACGCTAGGCTGACGTCTGAGGTACCGGGATGGGTGACTC

ACGCGTACGCGGCCGCTCGAGCAGAAACTCATCTCAGAAGAGGATCTGGCAGCAATGATATCCTGGATT
ACAAGGATGACGACGATAAGGTTTAA



[View online »](#)

Protein Sequence: >MR217582 representing NM_021568
 Red=Cloning site Green=Tags(s)

MGEGDAIWAPPILPHSTLGLTSHHPELHFGGKMESEKSVSEGLNVTLTIRLLMHGKEVGSIIIGKKGETVKK
 MREESGARINISEGNCPERIVTITGPTDAIFKAFAMIAVKFEEDIINSMSNSPATSKPPVTLRLVVPASQ
 CGSLIGKGGSKIKEIRESTGAQVQVAGDMLPNSTERAVTISGTPDAIIQCVKQICVVMLESPPKGATIPY
 RPKPASTPVIFAGGQAYTIQGQYAIPHPDQLTKLHQLAMQQTFFPPLGQTNPAFPGEKLPHSSEEAQNL
 MGQSSGLDASPPASTHELTI PNDLIGCIIGRQGTKINEIRQMSGAQIKIANATEGSSERQITITGTPANI
 SLAQYLINARLTSEVTGMGAL

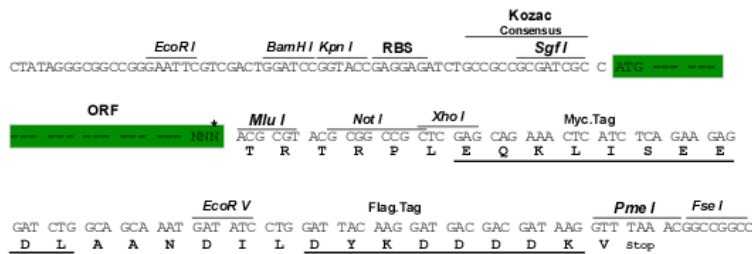
TRTRPLEQKLISEEDLAANDILDYKDDDDKV

Restriction Sites:

SgfI-MluI

Cloning Scheme:

Cloning sites used for ORF Shuttling:



* The last codon before the Stop codon of the ORF

ACCN: NM_021568

ORF Size: 1113 bp

OTI Disclaimer: The molecular sequence of this clone aligns with the gene accession number as a point of reference only. However, individual transcript sequences of the same gene can differ through naturally occurring variations (e.g. polymorphisms), each with its own valid existence. This clone is substantially in agreement with the reference, but a complete review of all prevailing variants is recommended prior to use. [More info](#)

OTI Annotation: This clone was engineered to express the complete ORF with an expression tag. Expression varies depending on the nature of the gene.

Components: The ORF clone is ion-exchange column purified and shipped in a 2D barcoded Matrix tube containing 10ug of transfection-ready, dried plasmid DNA (reconstitute with 100 ul of water).

Reconstitution Method:

1. Centrifuge at 5,000xg for 5min.
2. Carefully open the tube and add 100ul of sterile water to dissolve the DNA.
3. Close the tube and incubate for 10 minutes at room temperature.
4. Briefly vortex the tube and then do a quick spin (less than 5000xg) to concentrate the liquid at the bottom.
5. Store the suspended plasmid at -20°C. The DNA is stable for at least one year from date of shipping when stored at -20°C.

RefSeq: [NM_021568.2](#), [NP_067543.2](#)

RefSeq Size: 2175 bp

RefSeq ORF: 1116 bp

Locus ID: 59093

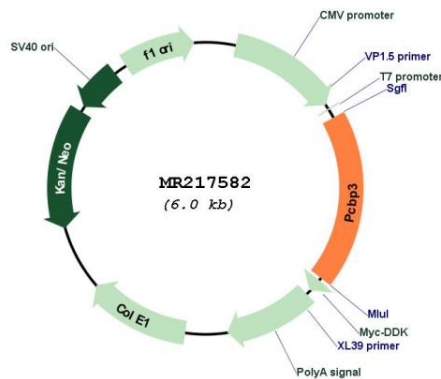
UniProt ID: [P57722](#)

Cytogenetics: 10 C1

MW: 39.7 kDa

Gene Summary: Single-stranded nucleic acid binding protein that binds preferentially to oligo dC. [UniProtKB/Swiss-Prot Function]

Product images:



Circular map for MR217582