

Product datasheet for **MR217553**

Tom1 (NM_001136259) Mouse Tagged ORF Clone

Product data:

Product Type:	Expression Plasmids
Product Name:	Tom1 (NM_001136259) Mouse Tagged ORF Clone
Tag:	Myc-DDK
Symbol:	Tom1
Vector:	pCMV6-Entry (PS100001)
E. coli Selection:	Kanamycin (25 ug/mL)
Cell Selection:	Neomycin



[View online »](#)

ORF Nucleotide Sequence:

>MR217553 representing NM_001136259
 Red=Cloning site Blue=ORF Green=Tags(s)

TTTTGTAATACGACTCACTATAGGGCGGCCGGGAATTCGTCGACTGGATCCGGTACCGAGGAGATCTGCC
 GCC**CGATCGCC**

ATGGACTTTCTCCTGGGAAATCCGTTCCAGTCTCCGGTGGGACAACGGATCGAGAAAGCTACAGATGGCT
 CCCTGCAGAGCGAGGACTGGCCCTCAACATGGAAATCTGTGACATCATCAACGAGACGGAGGAAGGCC
 CAAAGATGCCTTCCGAGCAGTGAAGAAGCGAATTATGGGGAATAAGAATTTCCATGAGGTCATGTGGCC
 CTTACGGTCTTGGAAACATGTGTTAAGAACTGTGGGCACCGCTTCCATGTAAGTGGTGGCCAAACAGGACT
 TTGTAGAGAATGTGCTGGTGGAGACCATCTGCCGAAGAACAATCCACCACCATTGTGCATGACAAGGT
 GTTGAACCTCATCCAGTCTGGGCTGACGCGTTCGCAGCTCACCTGATTTGACAGGTGTTGTTGCTGTC
 TACGAGGACCTGCGAAGGAAGGGCTAGAATTTCCATGACTGACCTGGACATGCTGTCGCCATCCACA
 CACCCAGAGAACTGTATCAACTCAGAGACACCATCCAGACAGAAGCTGTGAGTTCCAACACCAGTCA
 GCGTGGAGACCTGAGCCAGCATGCCACCCTCTGCCACTCCAGCTGTTCTCCCGGTGACTCACCCATC
 ACACCGACTCCTGAGCAGATTGGGAAGCTGCGCAGTGAGCTGGAGATGGTGGAGCGAAAGCTGCGAGTGA
 TGTCAGAGATGCTGACAGAGCTGGTGCCACCCAGGTAGAGCCTCGAGACCTGGAGCTACTACAGGAACT
 GAACCGCACCTGCCGTGCCATGCAGCAGCGGATCCTGGAGCTTATCCCACGCATCTCAAATGAGCAGCTG
 ACGGAGGAGCTGCTCATGATCAACGACAACCTCAACAACGTGTTTCTGCGCCATGAACGGTTTGAACGCT
 TCCGAACAGGCCAGACTGCTAAGGCCTCCAGTGAAGCTGAGCTAGCTACTGACCTGATTGACATGGGTCC
 TGACCCCGCAGCCACAAACCTCTCATCTCAACTGGCAGGAATGAACAATCGACTGCTCAGCCTCAGT
 AATCACTTCTACTTGAAGAAGGAAAGAAGGAATGGGCCCTCTTCAAGACCTTGGTCCAGAAGTGTGA
 GAGCTGGCCTGCAGTCTCTGGAGACCTCAGGTACCTGGAAGATGACTTTGACATGTTTGTCTGACTCG
 GGGCAGCTCACTGGCTGACCAACGGAAGGGTCAAATATGAAGCTCCCAACACAGATGGCCTGGCT
 GGGGCCCTAGATGCCCGCAGCAGAGCACCGGAGCGATCCCAGCCACTCAGGCCGCATCATGGAGGACA
 TTGAGCAGTGGCTGTCCACAGATGTGGGAAACAGTGTGAGGAGCCCTCTGGTGTACCAGTGAAGAATT
 TGACAAATTTCTGGAAGAACGAGCCAAAGCTGCTGATCGACTTCCCAACCTGGCCAGCCCTTCCAGCCGAG
 GGACCCCCAGACCATCTCTGGAACAGCCCTCGGAGGAAGACCCAGGAGAAGGACGATGACATGCTGT
 TTGCCTTA

AG**CGGACCG**ACGCGTACGCGGCCGCTCGAGCAGAACTCATCTCAGAAGAGGATCTGGCAGCAAATGATATCC
 TGGATTACAAGGATGACGACGATAAGGTTTAA

Protein Sequence:

>MR217553 representing NM_001136259
 Red=Cloning site Green=Tags(s)

MDFLLGNPFSSPVGQRIEKATDGLQSEDWALNMEICDIINETEEGPKDAFRAVKKRIMGNKNFHEVMLA
 LTVLETVCVKNCGHRFHVLVANQDFVENLVRTILPKNNPPTIVHDKVLNLIQSWADAFRSPDLTGVVAV
 YEDLRRKGLEFPMTDLMLSPIHTPQRTVFNSETPSRQNSVSSNTSQRGDLQSHATPLPTPAVLPGDSPI
 TPTPEQIGKLRSELEMVSGNVRVMSEMLTEL VPTQVEPADLELLQELNRTCRAHQQRILELIPRISNEQL
 TEELLMINDNLNNVFLRHERFERFRGTAKASSEAELATDLIDMGPDPAATNNLSSQLAGMNNRLLSLS
 NHFLLEEKGKKEWAPLQDLGSRSVRAGLQSLQLETSGHLEDDFDMFALTRGSSLADQRKGVKYEAPQTTDGLA
 GALDARQSTGAIPATQARIMEDIEQWLSTDVGNSAEPPSGVTSEEFDKFLEERAKAADRLPNLASPSAE
 GPPRPSPTAPRRKTQEKDDMLFAL

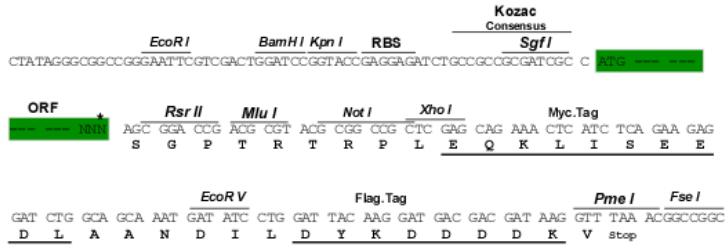
SGPTRTRRLEQKLISEEDLAANDILDYKDDDDKV

Restriction Sites:

SgfI-RsrII

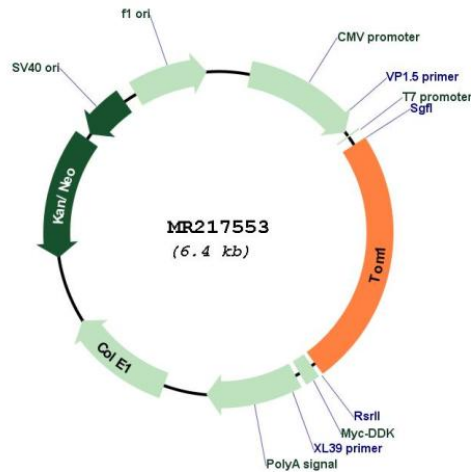
Cloning Scheme:

Cloning sites used for ORF Shuttling:



* The last codon before the Stop codon of the ORF

Plasmid Map:



ACCN: NM_001136259

ORF Size: 1548 bp

OTI Disclaimer: The molecular sequence of this clone aligns with the gene accession number as a point of reference only. However, individual transcript sequences of the same gene can differ through naturally occurring variations (e.g. polymorphisms), each with its own valid existence. This clone is substantially in agreement with the reference, but a complete review of all prevailing variants is recommended prior to use. [More info](#)

OTI Annotation: This clone was engineered to express the complete ORF with an expression tag. Expression varies depending on the nature of the gene.

Components: The ORF clone is ion-exchange column purified and shipped in a 2D barcoded Matrix tube containing 10ug of transfection-ready, dried plasmid DNA (reconstitute with 100 ul of water).

Reconstitution Method:

1. Centrifuge at 5,000xg for 5min.
2. Carefully open the tube and add 100ul of sterile water to dissolve the DNA.
3. Close the tube and incubate for 10 minutes at room temperature.
4. Briefly vortex the tube and then do a quick spin (less than 5000xg) to concentrate the liquid at the bottom.
5. Store the suspended plasmid at -20°C. The DNA is stable for at least one year from date of shipping when stored at -20°C.

RefSeq: [NM_001136259.1](#), [NP_001129731.1](#)

RefSeq Size: 2358 bp

RefSeq ORF: 1551 bp

Locus ID: 21968

Cytogenetics: 8 C1

MW: 57.6 kDa

Gene Summary: May be involved in intracellular trafficking. Probable association with membranes.
[UniProtKB/Swiss-Prot Function]