

Product datasheet for **MR217528**

Frmd3 (NM_001163732) Mouse Tagged ORF Clone

Product data:

Product Type:	Expression Plasmids
Product Name:	Frmd3 (NM_001163732) Mouse Tagged ORF Clone
Tag:	Myc-DDK
Symbol:	Frmd3
Synonyms:	4.1O; 9430066I12Rik; EPB41L4O; P410
Vector:	pCMV6-Entry (PS100001)
E. coli Selection:	Kanamycin (25 ug/mL)
Cell Selection:	Neomycin



[View online »](#)

ORF Nucleotide Sequence:

>MR217528 representing NM_001163732
 Red=Cloning site Blue=ORF Green=Tags(s)

TTTTGTAATACGACTCACTATAGGGCGGCCGGAATTCGTCGACTGGATCCGGTACCGAGGAGATCTGCC
 GCC**CGCATCGCC**

ATGTTTCGTTCTTGTCACTGTGCGCCGAGAGGCCAGAAAGGACTATGAAGATGATTCACCTTTTCGGAGCTCCA
 GTATCAAATCGCTCAACCAAGGAGATGAAATGCACCATTGACTGCTGGACGACTCGGAGGCTCCTGCCA
 TATCCAGAGGAAACGAAAGGGCAGTTTCTCATTGAATACATCTGCAACTACTATAGCCTGCTGAAAAAG
 GACTACTTTGGAATTCGCTATGTGGACCCAGAGAAGCAAAGGCACTGGCTTGAGCCTAACAGTCCATCT
 TCAAGCAAATGAAATCTCATCCACCATACACCATGTGCTTTAGAGTGAAATTTACCCACATGAACCCTT
 GAAGATTAAGAAGAGCTCACAAGGTACCTATTATTTTGCAAATTAAGAAGACATTTTTCATGGTCGA
 CTGCTGTGTTCTTTTCTGATGTGCCTATCTGGGTGCTGTATCGTTCAAGCTGAGTTTGGTGATTACT
 ATCCTGATGAGCATCCTGAGAATTATATCAGTGAGTTTGAGATTTTCCCAAGCAGTCACAGAAATGGA
 AAGAAAAATCATGAAATTCATAACAACGAACTAAGAGGTGAGAGCCAGCAATTGCTGAATCACTTA
 CTCTAAAAGCTCATACATTGAAAACCTATGGAGTGGATCCTCACCCATGCAAGGATTCAAGAGGTGCTA
 CAGCATTTTTAGGATTCAGTCTGCAGGTTTCGTCGTATTCCAGGGAAATAAAAGATCCATTTGAGAAA
 ATGGTCAGATGTCTGCAAATGAAGTTTGAAGGGAAGACATTTTACGTGATTGGTTCCAGAAAAGAGAAA
 AATGCTGTTTTGGCATTCCATACATCAACACCAGCTGCCTGCAAACATTTATGAAATGTGGGTAGAAA
 ACCAAGCCTTTTATAAGTATGCAAAGTCCAGTCAGATCAAGACTGTGTCAAGCAGCAAGATTTTTTAA
 AGGAAGTAGATTCGATACAGTGGTAAAGTTGCTAAAGAGGTGGTAGAGGCAAGCTCCAAAATCCAGAGG
 GATCCTCCTGAAGTGCATAGAGTCAACATTACTCAGAGTCGACGCTTTCCTCCTGAACAAACAGCTCA
 TCATCAACATGGAACCTTTGCAGCCCTGCTTCTTCCCCACTGAACAGGAAGAAGAAGTTCTGTGGG
 TGAGGGTGTCCCCTGCCTAAAATGGATGTGCTGAGCCCTAATTGCCAGCTCACCAGTGAAGGGAGCA
 CAGTGTGCAGATCCTCCAGATGAAGAGGAAGATAGAGTAAAAGAAGACCCCTTGACCATCTCTGAACTAG
 CGTACAATCCCAGCGCCAGCCTGCTTCTACCCAGTGGATGATGATGAAATCAACATGCTCTTTGACTG
 TCCATCCAGGCTTGAGTTAGAAAGAGAAGACACGGATTCAATTTGAGGAACTTGAAGCAGATGAAAATGCT
 TTTTTGATTGCTGAAGAGGAGGAGCTGAAGGAAGCTCGCCAAGCTTTGTCATGGAGCTATTCAATCTCGA
 CCGGCCATATCTGGGTCAACCCCTGGTCAAGAGTTTCTCCAGGCTCCTGTGGTGGGCCTGGGACTGCT
 GCTGTTTGATTTCCCTGCTCCTCCTCTTTTGGAGTCAGTCTCTATGCCA

ACGCGTACGCGGCCGCTCGAGCAGAAACTCATCTCAGAAGAGGATCTGGCAGCAAATGATATCCTGGATT
 ACAAGGATGACGACGATAAGGTTTAA

Protein Sequence:

>MR217528 representing NM_001163732
 Red=Cloning site Green=Tags(s)

MFASCHCAPRGRRTMKMIHFRSSSIKSLNQEMKCTIRLLDDSEVSCHIQRKQFLIEYICNYSSLLEK
 DYFGIRYVDPEKQRHWLEPNKSIKQMKSHPPYTMCFRVKFPHEPLKIKEELTRYLLYLQIKRDFHGR
 LLCFSFDAAYLGACIVQAEFGDYYPDEHPENYISEFEIFPKQSQKLERKIMEIHNNELRGQSPAIAEFNL
 LLKAHTLETYGVDPHPCKDSRGATAFLGFTAAGFVVFQGNKRIHLRKWSDVCKLKFEGKTFYVIGSQKEK
 NAVLAFHTSTPAACKHLWKCGVENQAFYKYAKSSQIKTVSSSKIFFKGSFRFRYSKVAKEVVEASSKIQR
 DPPEVHRVNITQSRSFHSLNKQLIINMEPLQPLLPSPTEQEEVVPVGEVPLPKMDVSEPLIASSPVKGA
 QCADPPDEEEDRVKEDPLTISELAYNPSASLLPTPVDDDEINMLFDCPSRLELEREDTDSFELEADENA
 FLIAEEEEELKEARQALSWSYSILTGHIWVNPLVKSFSRLLVVGLGLLLVFPLLLLLLLESVSMF

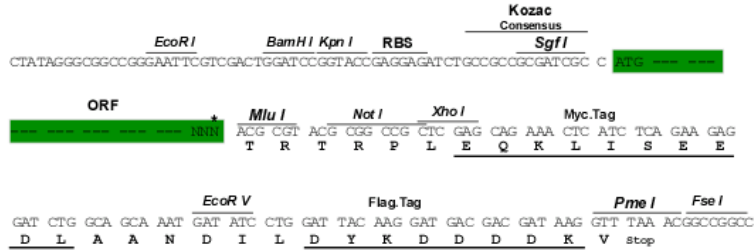
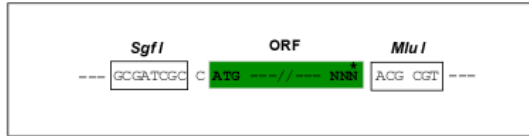
TRTRPLEQKLISEEDLAANDILDYKDDDDKV

Restriction Sites:

Sgfl-MluI

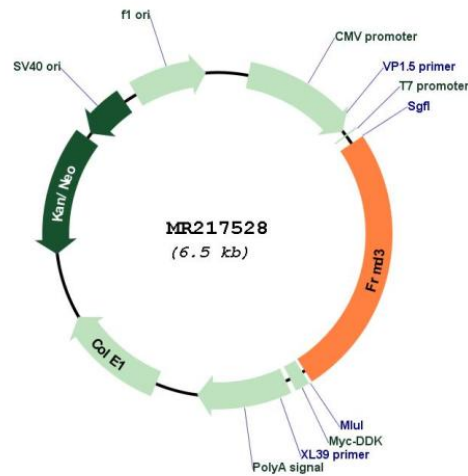
Cloning Scheme:

Cloning sites used for ORF Shutting:



* The last codon before the Stop codon of the ORF

Plasmid Map:



ACCN:	NM_001163732
ORF Size:	1662 bp
OTI Disclaimer:	The molecular sequence of this clone aligns with the gene accession number as a point of reference only. However, individual transcript sequences of the same gene can differ through naturally occurring variations (e.g. polymorphisms), each with its own valid existence. This clone is substantially in agreement with the reference, but a complete review of all prevailing variants is recommended prior to use. More info
OTI Annotation:	This clone was engineered to express the complete ORF with an expression tag. Expression varies depending on the nature of the gene.
Components:	The ORF clone is ion-exchange column purified and shipped in a 2D barcoded Matrix tube containing 10ug of transfection-ready, dried plasmid DNA (reconstitute with 100 ul of water).
Reconstitution Method:	<ol style="list-style-type: none">1. Centrifuge at 5,000xg for 5min.2. Carefully open the tube and add 100ul of sterile water to dissolve the DNA.3. Close the tube and incubate for 10 minutes at room temperature.4. Briefly vortex the tube and then do a quick spin (less than 5000xg) to concentrate the liquid at the bottom.5. Store the suspended plasmid at -20°C. The DNA is stable for at least one year from date of shipping when stored at -20°C.
RefSeq:	NM_001163732.1 , NP_001157204.1
RefSeq Size:	2044 bp
RefSeq ORF:	1665 bp
Locus ID:	242506
UniProt ID:	Q8BHD4
Cytogenetics:	4 C3
MW:	64 kDa
Gene Summary:	Putative tumor suppressor gene that may be implicated in the origin and progression of lung cancer.[UniProtKB/Swiss-Prot Function]