

## Product datasheet for **MR217512**

### Zzz3 (NM\_001080755) Mouse Tagged ORF Clone

#### Product data:

Product Type:	Expression Plasmids
Product Name:	Zzz3 (NM_001080755) Mouse Tagged ORF Clone
Tag:	Myc-DDK
Symbol:	Zzz3
Synonyms:	3110065C23Rik; 6430567E01Rik; AA408566; AI481057; AW556059; R75514
Mammalian Cell Selection:	Neomycin
Vector:	pCMV6-Entry (PS100001)
E. coli Selection:	Kanamycin (25 ug/mL)



[View online »](#)

**ORF Nucleotide Sequence:**

>MR217512 representing NM\_001080755  
 Red=Cloning site Blue=ORF Green=Tags(s)

TTTTGTAATACGACTCACTATAGGGCGGCCGGGAATTCGTGACTGGATCCGGTACCGAGGAGATCTGCC  
 GCC**CGCATCGCC**

ATGGTAGGGACTTGCCATAGTATGGCTGCTCCCGATCTACTCGTGTACAAGATCAACAGTGGGGTTAA  
 ACGGCTTGGATGAATCTTTTTGTGGTAGAACTTTAAGGAATCGTAGCATTGCTCACCCAGAAGAAATCTC  
 TTCTATTCTCAAGTACGATCAAGATCACCAAAGAAGAGAGCAGAGCCTGTGCCAACTCAGAAAAGGAACC  
 AATAATGGAAGAACCTCTGATGTGAGACAGCAGAGCGCTCGAGACTCATGGGTGAGCCCTAGGAAAAGAA  
 GACTTTCTTCTCGAAAAGGATGACCTGGAAAGGCAGGCCCTAGAGAGTTGTGAGAGGAGGCAGGCAGA  
 GCCAGCACCCAGTCTTAAGAACATTAACCGCTGTCTTAGAGCTGAAGCCACAATAGTTCAGAAGAA  
 GATTTCGCCTGTAAAACCAGACAAGGAGCCAGGAGAACACAGGAGGATAGTAGGGACCATGATGCAGACT  
 TTCAAGGGGCTAAACGAGCTTGTGATGTCTTATATTGGATGATTGTGAGAAAAGGGAAGTTAAAAAGT  
 GAATGTCAGTGAGGAAGGCCACTTAATGCTGCAGTAGTAGAAGAAATCACAGGCTATTTGACTGTCAAT  
 GGTGTTGATGACAGTGACTCAGCTGTTATAAACTGTGATGACTGTCAGCCTGACGGGAACACTAAACAAA  
 ATAACCCTGGTTCCTGTGTGCTGCAAGGAAGAATCAGTAGCTGGAGATGGGGATTCCGAAAACCCAGACCTC  
 AGTGTTCGTGGTAGTAGGAAGGAGGACAGTTGTATAGACCATTTTCGTGCCTTGACAAAAGTCTGATGTG  
 CAGGTCAAGTTGGAGGACCACAACTAGTAAGTGCCTGCCTACCTGTGGAACGACGAAAATCAGCTGACTG  
 CCGAGTCAGCTTCAGGCCCTGTTTCTGAAATTCAGTCATCCTTAAGAGATTCTGAGGAAGAAGTAGATGT  
 GGTGGGAGATAGCAGTGCCTCCAAGAGCAGTGTAAAGAGAAGCAGTAACCCCTGGACACGGGTTCT  
 GAACGCATGCCAGTCTCTGGAGAGCCAGAGCTGCCTCTATCCTAGACTGTGTTTCAGCTCAGATGACAT  
 CTTTATCAGAACCTCAGGAACATCGGTACACCCTGAGAACTTCACCTCGGAGGGCGCCCTGGCCGAAG  
 TAGTCCTACTAAAACCACATCTCCTTACAGAGAAAATGGACAGTTGGAGGAGACTAATCTCAGTCCCCAG  
 GAAACAAACACGACCGTTAGTGATCATGTGAGTGTCTCCACAGATCCTGCCGAAGTTCCTCAAGATG  
 GAAAGGTTCTATGTTGTGACTCTGAAAATATGGAAGTGAAGGACTAAGTAAGCCACCCTCAGAGGCCAG  
 AGTGAATATTGGACATTTGCCATCTGCCAAGAGAGTGCAGTCAGCACACTGCCGAGGAGGAAGATGAT  
 GACCCTGATGTTTATTACTTTGAATCAGATCATGTGCACTGAAACACAACAAAGATTATCAGAGACTGC  
 TACAGACCATTGCTGTACTTGAGGCTCAGCGTTCCCAAGCAGTGAAGACCTGAAAAGTTTAGGCAAAACA  
 CCAGAGAGAAGCACTAAAAATCCTATTGGATTTGTGGAGAACTTCAGAAGAAGGCTGACATAGGGCTT  
 CCATACCCACAGAGATTGTTTCAGTTACCTGAGATCATGTGGGACCAGTACACCAATAGCCTTGGGAACT  
 TTGAAAGAGAATTTAAACACCGCAAAAGACATACTAGGAGAGTTAAGTTAGTTTTTGATAAAGTAGGGTT  
 GCCCGCTAGACCAAAAAGTCTTTAGATCCTAAGAAGGATGGAGAATCCCTTTCTGACTCCATGTTGCCCT  
 TTGAGTGTGGTCCAGAAGGCTCCCATAAACCGTCTCAGATGATAAGAGGTCGCCTGTGTGACGACAGCA  
 AGCCCCGAGACCTCAACCAGCTGTGGACTGTTGAAGAACGAAAAAACTCGAACGACTACTCCTGAAATA  
 CCCTCCGAAAGAAGTAGAATCTCGGCGGTGGCAGAAGATTGCTGATGAAGTGGCAACCCGGACAGCCAAA  
 CAGGTCCGAGTCGTGTACAGAAGTACTCATAAAGCTAACGAAAGCCGGCATACCAGTTCAGGCAGAA  
 CACCTAACTTATATATACTCCAGAAAGTCTCAACAAGCAGGCAGCAGCACCCCTTAATAAGCACCT  
 CTTTAAACCTTCCACTTTCATGACTTCACATGAGCCACCGGTGTACATGGATGAAGATGATGACCCGGTCC  
 TGTCTCCATAGCCACATGAGCACTGCTGCTGAGGAGGCCCTCAGATGAAGAAAGCATTCTCATATATA  
 GGAGTTTACCTGAATATAAAGAAGTATTACAGTTTAAAAAGTTAAAAAAGCAGAACTTCAACAAATGCA  
 AGCAGAAAGTGGGTTTGTGACGACGATAGGCTTTAAGTGTGATAACTGTGGTGTGGAACCTATCCAAGGA  
 GTCCGGTGGCACTGCCAGGACTGCCCTCCAGAAATGTCTTTGGATTTCTGTGACTCTTGTTCAGACTGCC  
 CACATGAAACAGATATTCACAAGGAAGACCACCAGTTAGAACCTGTTTATAAGTCAGAGACGTTCTTAGA  
 CAGAGATTACTGTGTGCCAGGCACCAGTTATAGTTATCTGGACCCCACTACTTCCAGCCAACAGA

**ACGCGT**ACGCGGCCGCTCGAGCAGAACTCATCTCAGAAGAGGATCTGGCAGCAATGATATCTGGATT  
 ACAAGGATGACGACGATAAGGTTTAA

Protein Sequence: >MR217512 representing NM\_001080755  
 Red=Cloning site Green=Tags(s)

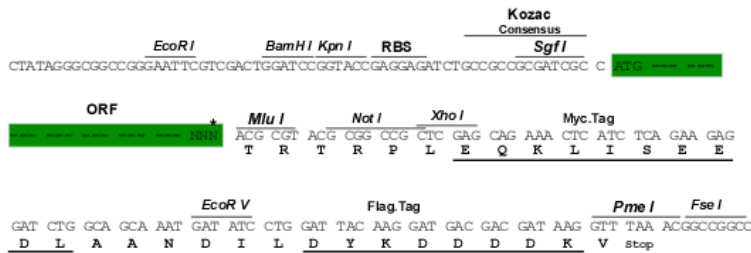
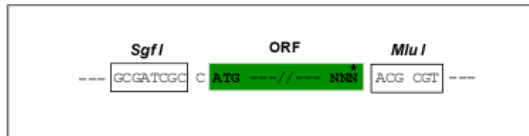
MVGTCHSMAASRSTRVTRSTVGLNGLDESFCGRTLNRNSIAHPPEISSHSQVRSRSPKKRAEPVPTQKGT  
 NNGRTSDVRQQSARDSWVSPKRRLSSSEKDLLERQALESCERRQAEPAPPVFKNIKRCLRAEATNSSEE  
 DSPVKPKDKEPGEHRRIVVDHADDFQGAKRACRCLILDDCEKREVKVNVSEEGPLNAADVVEITGYLTVN  
 GVDDSDSAVINCDDCQPDGNTKQNNPGSCVLEESVAGDGDSETQTSVFCGSRKEDSCIDHFVPCTKSDV  
 QVKLEDHKLVTACL PVERRNQLTAEASGFPVSEIQSSLRDSEEEVDVVGDSASKEQCNESSNPLDTGS  
 ERMPVSGEPELSSILDCVSAQMTSLSEPQEHRYTLRTSPRRAALARSSPTKTTSPYRENGQLEETNLSQ  
 ETNTTVSDHVSESPDPAEVPQDGKVLCCDSENYGSEGLSKPPSEARVNIHGLPSAKESASQHTAEEDD  
 DPDVYVFESDHVALKHNKDYQRLQTIAYLEAQRSQAVQDLESLGKHQREALKNPIGFVEKLQKKADIGL  
 PYPQRVVQLPEIMWDQYTNLSGNFEREFKHKRHRTRRVKLVFDKVG LPARPKSPLDPKKGESLSYSMLP  
 LSDGPEGSHNRPQMIRGRLCDDSKPETFNQLWTVVEEQKLEQLLLKYPPEEVE SRRWQKIADELGNRTAK  
 QVASRVQKYFIKLTAGIPVPGRTPNL YIYSRKSSTRRQHPLNKH LFKPSTFMTSHEPPVYMEDEDDRS  
 CLHSHMSTAAEEASDEESIP I IYRSLPEYKELLQFKKLKQKLQMQAESGFVQHVGFKCDNCGVEPIQG  
 VRWHCQDCPPEMSLDFDCSDCPHETDIHKEDHQLPEVYKSETFLDRDYCVSQGTSYSYLDPNYFPANR  
  
 TRTRPLEQKLISEEDLAANDILDYKDDDDKV

Chromatograms: [https://cdn.origene.com/chromatograms/mm9040\\_c10.zip](https://cdn.origene.com/chromatograms/mm9040_c10.zip)

Restriction Sites: SgfI-MluI

Cloning Scheme:

Cloning sites used for ORF Shuttling:

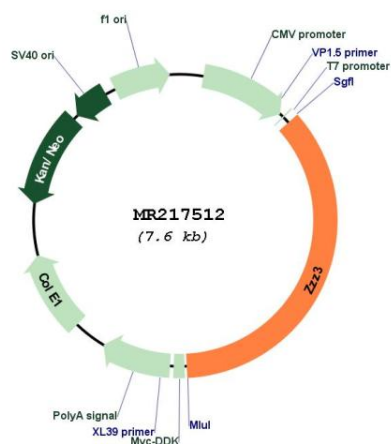


\* The last codon before the Stop codon of the ORF

ACCN: NM\_001080755

<b>ORF Size:</b>	2730 bp
<b>OTI Disclaimer:</b>	The molecular sequence of this clone aligns with the gene accession number as a point of reference only. However, individual transcript sequences of the same gene can differ through naturally occurring variations (e.g. polymorphisms), each with its own valid existence. This clone is substantially in agreement with the reference, but a complete review of all prevailing variants is recommended prior to use. <a href="#">More info</a>
<b>OTI Annotation:</b>	This clone was engineered to express the complete ORF with an expression tag. Expression varies depending on the nature of the gene.
<b>Components:</b>	The ORF clone is ion-exchange column purified and shipped in a 2D barcoded Matrix tube containing 10ug of transfection-ready, dried plasmid DNA (reconstitute with 100 ul of water).
<b>Reconstitution Method:</b>	<ol style="list-style-type: none"><li>1. Centrifuge at 5,000xg for 5min.</li><li>2. Carefully open the tube and add 100ul of sterile water to dissolve the DNA.</li><li>3. Close the tube and incubate for 10 minutes at room temperature.</li><li>4. Briefly vortex the tube and then do a quick spin (less than 5000xg) to concentrate the liquid at the bottom.</li><li>5. Store the suspended plasmid at -20°C. The DNA is stable for at least one year from date of shipping when stored at -20°C.</li></ol>
<b>RefSeq:</b>	<a href="#">NM_001080755.2</a> , <a href="#">NP_001074224.1</a>
<b>RefSeq Size:</b>	7601 bp
<b>RefSeq ORF:</b>	2733 bp
<b>Locus ID:</b>	108946
<b>UniProt ID:</b>	<a href="#">Q6KAQ7</a>
<b>Cytogenetics:</b>	3 H3
<b>MW:</b>	102.8 kDa
<b>Gene Summary:</b>	Component of the ATAC complex, a complex with histone acetyltransferase activity on histones H3 and H4.[UniProtKB/Swiss-Prot Function]

Product images:



Circular map for MR217512