

Product datasheet for MR217427

Depdc5 (NM_001170567) Mouse Tagged ORF Clone

Product data:

Product Type:	Expression Plasmids
Product Name:	Depdc5 (NM_001170567) Mouse Tagged ORF Clone
Tag:	Myc-DDK
Symbol:	Depdc5
Synonyms:	AV016528
Vector:	pCMV6-Entry (PS100001)
E. coli Selection:	Kanamycin (25 ug/mL)
Cell Selection:	Neomycin
ORF Nucleotide Sequence:	>MR217427 representing NM_001170567 Red=Cloning site Blue=ORF Green=Tags(s)

TTTTGTAATACGACTCACTATAGGGCGCCGGAATTCGTCGACTGGATCCGGTACCGAGGAGATCTGCC
GCCGCGATCGCC

ATGAGAACCACAAAGGTCTACAACTTGTTCATCCACAAGAAGGGCTTTGGGGCAGTGATGATGAGCTAG
TCGTGAACCTAAAGTATTTCCACATCAAACCTGGAGACATTGGAGATTGCTCACCCCAATGATGA
GTACAGTCTTTGCTTTTGAAGTCAAGTCGCTTAAGGAAGATTTACAGAAAGAACTATCAGTGTGGAC
CAGACTGTGACTCAAGTATTCGGCTAAGACCTTATCAAGATGTCTATGTGAATGTTGTAGACCCCAAGG
ATGTGACTCTTGACCTGGTGAATTGACTTTTAAAGGATCAGTATATTGGCCGTGGGGATATGTGGCGACT
AAAGAAAAGTTTGGTGAGCACCTGTGCCTATATCACTCAAAAAGTGAATTTGCTGGCATCAGGGCAGAG
GCTGGTGAGCTGTGGGTCAAGAAATGAGAAGGTCATGTGTGGTTACATTAGTGAAGAGACCAGGGTGGTGT
TCCGTTTACGTCGGCTATGGTTTACATATTTATTCAGATGAGCTGTGAAATGTGGGATTTTATATTTA
TGGGGATCTGTACTTTGAGAAAGCTGTGAACGGTTTCTCGCCGACCTGTTTACTAAATGGAAGGAGAAG
AACTGTAGTCATGAAGTACTGTGGTCTGTTTCCAGAACTTCTATGATGCAAAATCTATTGATGAAT
TTCCTGAAATAAACCCGAGCTTCAATTCAGAGGATCACAAGGGGAGATTCTATGAGGACTTTTACAAGT
GGTGGTGCAGAAATGAGAGAAGGGAAGAGTGGACTTCACTCCTCGTACCATTAAAAAAGCTTTCATCCAG
TATCCAGTGTGGTGGCGACTGGAACAGGAGGGGCTTTCTCAAGGAGACAATTCTACCTCAGCACAAG
GAAACTACCTAGAGGCCATCAACTTGTCAATTCAATGTGTTTGACAAGCACTACATCAACCGAAAATTTGA
CCGAACTGGGCAGATGTCTGTGGTGATCACGCCGGGGTGGGTGCTTTGAAAGTGGACCGCTACTCATG
ATCTTGACCAAGCAGCGGATGATTGATAATGGAATTGGTGTGGACTTAGTGTGCATGGGAGAGCAGCCAC
TACATGCTGTGCCATTATCAAGCTACATAACCGGAGTGTCCGAGGGATTCTCGACTGGGTGATGATTA
TAATATTCCTCACTGGATAAACCATAGTTTCTACACATCCAAAAGCCAGCTCTTTTGTAAACAGTTTCACT
CCACGGATAAAAAGTAGCAGGAAAGAAGTCTGCCTCTGAGAAAACCAAAAATGGTCTGTATACATCTCTCG
GGACTCCAAAGGAATCTGAAAACACCTTCCCATCCAAGTAGATTATGATGCCTACGATGCTCAAGTGTT
CAGGCTGCCTGGCCATCCCGGGCTCAGCGCCTCGCCACCTGCAGGTCTGTGAGAGAACAGGAGAATCAC
AGTCGCAAAAGTGCAAGCTCCTGTGATGTCTATCCAGCCCTTCCTGCCAAGCCGTGACTGCCCACTG



[View online »](#)

AGGAAGTGAGGAGCCAGGCTTCTGATGACAGCTCCCTGGGCAAGAGCACCAACATCCTGATGATCCCTAA
 CCCCCACCTGCACCAGTATGAAGTCAGCAGCTCACTGGGCTACACCAGCACCCGAGATGTCTGGAGAAC
 ATGATAGAACCCACAGAGGGACTCCAGTGCACCAGGAAGTTCCATGTGGGTAGTGCAGAGTCCATGC
 TCCATGTCCGACCTGGAGGATACACGCCTCAGAGAGCGCTGATTAACCCCTTCGCCCCCTCGAGGATGCC
 CATGAAGTCACTCCAACAGAAGGCGCTGGATGCACACTTTTCTGTAGGCCATCTGGAGAGGCCATC
 CAGATCCATCATCAGACCCGGCAAAACATGGCAGAGCTGCAGGGCAGCAGGCAGAGGGACCCTACCCACT
 CCTCTGCAGAGCTGTTGGAGTTGGCATACCATGAAGCTGCCGGGAGGCACAGCACTTCCCGCCAGCTGG
 TGACAGCATGTCCTTGAACCTTCAGTGGAACGGAAGAGCTTTCTGTACGCTGCTTAGCAACAGCAGTACA
 GGTGTGAATCCTAGGACCCAGAACAAGGACTCCCTAGAGGACAGTGTCTTACTCTCCAGACCCAAATGC
 CAGGCTTCTGTTGCACAGTTGGAGTGGATTGGAAGTCTTACTACTCCTGCATGCCTTCCCCTCACCAC
 TGACTACTTCCCAGACCTCAGGGCCTGCAGAATGACTACACAGAGGGCTGCTATGATCTCTCCAGAA
 GCAGACATGGACAGGAGGGATGAGGAGGGTGTCAAATGACAGCCAGCAAGTGTGGAAGATTTCATCT
 GCCAGCGTCTCATGCAGGGTTACCAAATCATAGTACAGCCAAAGACCCAGAAACCAACACCACAGTCCC
 ACCCCATTGAGCAGTAGCCACTCTATAGCAGAGGCCTTGTGTCCGAAATCGCCCTGAGGAGGAAGGC
 CAGTATTGGTTAAGTATGGGCAGAACTTCCATAAGGTGACACTCAAGGACAAGATGATCACAGTAACTC
 GTTACCTTCCAAGTACCCTTATGAATCTGCCAGATCCATTACACCTACAGCCTCTGCCCTTCCCCTC
 TGACTCGGAGTTTGTCTCCTGTTGGGTGGATTTCTGCCACGAACGGCTCGAGGAATAAAGTGAATTAC
 TTAGATCAGTATATTTGTTCTGCTGGCTCTGAAGACTTCAGTTAATCGAGTCTCTGAAGTTCTGGAGAA
 CCCGATTTTACTACTGCCAGCTGTGTTACTGCCACCAAGCGCATCACAGAAGGGGAGGTGCACTGTGA
 CATCTATGGGGACAAACCCCGTGCAGATGAAGATGAGTGGCAGCTTCTAGATGGCTTTATTCGCTTTGTA
 GAGGGCTTAAATCGCATCCGACAGCGCCACCGCTCAGACCGCATGATTCCGAAAGGGGACTGCCATGAAAG
 GCTTGCAGATGACCGGGCCATCTCTGCACACTCTCGAGGCAGCAGGCCCTCCAGTCGGAAGAAAGG
 AACCTCAGCTCTGTCTGCCCTGCTGGAGATGGAAGTGTGAGAGAGCCTAGGAGAACAGCAGCAGACT
 GTGCACGGAAAAAGCTCCAACCTCAGCCAGCTGAGAACAGCAGTGTGCCATGACTCCCACCTATGTGGACA
 GCCACGCAAGGACGGGGCTTCTTTATGGAGTTTGTCCGACGCCACGCACAGCATCATCTGCCTTCTA
 CCCTCAGGCATCTGTGGACCAACAGCTCCTCTGGTGTAGACAGCACCAGTTTAGGGGTGACACAGGC
 CAGCCCATGGATAGAGGCAACAACCAGACCTTTGGGAACCCAGAACATAGAACAGGCCTTTCCCTCTG
 CAAACTCTGGTACTACAGCTCTCAGCAGCATGTAGCAAGCTCTTAACATCGTCTTCTACCCTGGTGA
 GATTCTGGAAGCCATGAAGCATCCCTCGACAGGAGTCCAGCTGCTGTCTGAACAGAAGGGCCTTTCACCG
 TGCTGCTTATCAGTCTGAGGTCGTACTGTTGATGAACAACGTGGAGGGGGTCCAGACGCAGGCGA
 TGGGCATAGACATCATGCAGAAAATGCTGGAAGAGCAGCTCATAACGCATGCATCTGGTGAAGCATGGCG
 GACCTTATCATATGGCTTCTATTTCTACAAGATAGTAATGGACAAGAACCAGGAAAGAGTGGCTATGCAG
 CAGCCCTCTGCCCTGTGACACAGCAGGAGCGGATGACTTTGCCAGCTTCCAACGCAAGTGGTTTGAGG
 TGGCCTTTGTGGCAGAAGAGCTTGTGCACTCTGAGATTCTGCCTTCTCCTGCCCTGGCTACCTAGCCG
 GCCAGCCTCTTATGCAAGCAGACACAGCTCCTTTAGCCGAAGTTTGGAGGACGGAGCCAGGCAGCTGCG
 CTGTTAGCTGCTACTGTCCAGAGCAGAGGACTGTGACCTGGATGTTGATGTGAACAACCGAACGGACC
 GGCTGGAATGGTGCAGCTGTTACTACCATGGAACCTTCTCTCAATGCCGCTTTGAGATCAAGCTACA
 CTGGATGGCAGTACTGCCACAGTGTGTTGAGATGGTCCAAGGTTGGCATCGAAAAGCTACCTCTGT
 GGCTTTGCTGGTCCCAGTTTTGGAGGGTCCCTTTGCTCTGCCAGTTACCTGTATGGTATCCCCTGA
 GGCCCCAGCTTTCATCCGCTCAACCTCAGCTGCTTGTCAAGGAGGGCAGCAGCAGCCTGTTTCGATAG
 CTTTGAACCAGAGACATATTGGGATCGAATGCATCTTTCCAGGAAGCCATTGCACACAGGTTTGATT
 GTGCAAGATAAATATTCTGTCTCCGCTTTAACTTCCCTGCTGAGAATAAGCCACAGTATATCCATGTCA
 CAGGAACGGTGTCTTCCAGCTGCCGACTCCAACGCAAGTTTTTCAGGGCAGCAGCGCGGCGACGGAA
 CTCTACCAGCTCCACCAACCAAAACATGTTCTGTGAGGAGCGGGTTGGCTACAACGGGCCTACAACACC
 ATGCTGACCAAGACATGGCGCTCTAGTCCACAGGGGACGAGAAGTTTGTGATCGGCTGCTGAAGGACT
 TCACGGATTTCTGCATCAACCGTACAACCGACTGGTCACGTTCTGGACAACTGCCTGGAGAAGATGCA
 TGCCAGTGTCCA

ACGCGTACGCGGCCGCTCGAGCAGAACTCATCTCAGAAGAGGATCTGGCAGCAAATGATATCCTGGATT
 ACAAGGATGACGACGATAAGGTTTAA

Protein Sequence: >MR217427 representing NM_001170567
 Red=Cloning site Green=Tags(s)

MRTTKVYKLVIIHKKGFGGSDELVVNPKVFPHIKLGDIVIAHPNDEYSPLLLQVKSLEDLQKETISVD
 QTVTQVFLRPYQDVYVNVVDPKDVTLDELVELTFKDQYIGRDMWRLKSLVSTCAYITQKVEFAGIRAQ
 AGELWVKNEKVMCGYISEETRIVFRSTSAMVYIFIQMSEMWFDFIYGDLYFEKAVNGFLADLFTKWKKEK
 NCSHEVTVVLFSRTFYDAKSIDFPEINRASIQEDHKGRFYEDFYKVVVQNERREWTSLLVTIKKLFIQ
 YPVLVRLLEQAGGFPGDNSTSAQGNYLEAINLSFNVFDKHYINRNFDRTGQMSVVIIPGVGVFEVDRLM
 ILTKQRMIDNGIGVDLVCMEQPLHAVPLFKLHNRSVPRDSRLGDDYNIPHWINHSFYTSKSQLFCNSFT
 PRIKLAGKKSASEKTKNGRDTSLGTPKESENTLPIQVDYDAYDAQVFRPLPGPSRAQRLATCRSVREQENH
 SRKSASSCDVSSSPSLSRALPTEEVRSQASDDSSLGKSTNLMIPNPHLHQYEVSSSLGYTSTRDVLEN
 MIEPPQRDSSAPGRFHVGSASMLHVRPGGYTPQRALINPFAPSRMPMKLTSNRRRWMHTFPVGPSEAI
 QIHHTQRNMAELQGSQRDPHTSSAELLELAYHEAAGRSTSRQPGDSMSLNFSGTEELSVSLLSNSST
 GVNPRQTQNKDSLEDSVSTSPDPMPGFCCTVGVWDKSLTTPACLPLTDDYFPDRQGLQNDYTEGCYDLLPE
 ADMDRRDEEGVQMTAQQVFEFICQRLMQGYQIIIVQPKTKPNTTVPPLSSSPLYSRGLVSRNRPEEEG
 QYWL SMGRTFHKVTLKDKMITVTRYLPKYPIYSAQIHYTYSLCPSHSDSEFVSCWVDFCHERLEEYKWN
 LDQYICSAAGSEDFSLIESLKFWRTRFLLLPACVTATKRITGEVHCDIYGDKPRADEDEWQLLDGFI
 RYV EGNLRIIRRRHRSRDMIRKGTAMKGLQMTGPISAHSLAAGPPVGKKGTSALSALLEMEASQKSLGEQTT
 VHGSSTQPAENSSVAMTPTYVDSRPRKDGAFMEFVRSPTASSAFYPQASVDQTAFLVLDSTSLGVSTG
 QPMDRGNNTFGNSQNIQAFPSANSQYSSQHVASSLTSSTLVEILEAMKHPSTGVQLLSEQKGLSP
 CCFISAEVVHWMNNEGVQVQAMGIDIMQKMLEEQLITHASGEAWRTFIYGFYFYKIVMDKEPERVAMQ
 QPSAPWYTAGADDFASFQRKWFVAFVAEELVHSEIPAFLLPWLPSRPASYASRHSFSRSFSGRSQAAA
 LLAAATVPEQRTVTLDVDVNNRTDRLEWCSCYHGNFSLNAAFEIKLHWMVAVTATVLFEMVQGWHRKATSC
 GFLLVPVLEGPFFALPSYLYGDLRAQLFIPNLSCLLKEGSEHLFDSFEPETYWDRMHLFQEAIHRFGF
 VQDKYSVSAFNPAENKQYIHVTGTVFLQLPYSKRKFSGQRRRRNSTSSTNQNMFCCEERVGYWAYNT
 MLTKTWRSSATGDEKFAADRLKDFDTFCINRDNRLVTFWTNCKLEKMHASAP

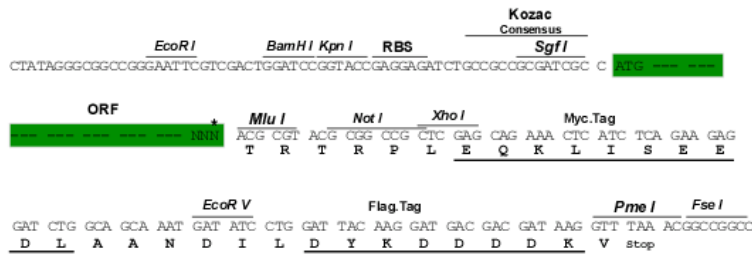
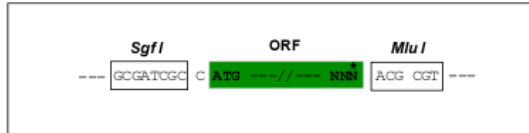
TRTRPLEQKLISEEDLAANDILDYKDDDDKV

Restriction Sites:

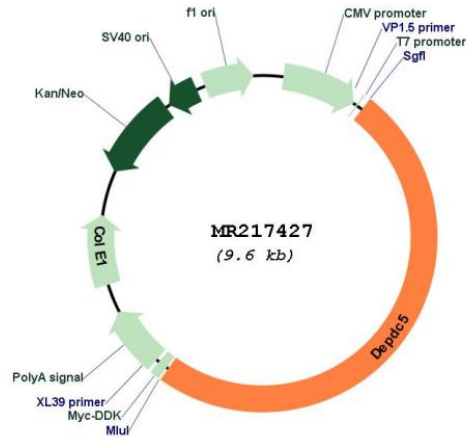
SgfI-MluI

Cloning Scheme:

Cloning sites used for ORF Shuttling:



* The last codon before the Stop codon of the ORF

Plasmid Map:


ACCN: NM_001170567

ORF Size: 4773 bp

OTI Disclaimer: The molecular sequence of this clone aligns with the gene accession number as a point of reference only. However, individual transcript sequences of the same gene can differ through naturally occurring variations (e.g. polymorphisms), each with its own valid existence. This clone is substantially in agreement with the reference, but a complete review of all prevailing variants is recommended prior to use. [More info](#)

OTI Annotation: This clone was engineered to express the complete ORF with an expression tag. Expression varies depending on the nature of the gene.

Components: The ORF clone is ion-exchange column purified and shipped in a 2D barcoded Matrix tube containing 10ug of transfection-ready, dried plasmid DNA (reconstitute with 100 ul of water).

Reconstitution Method:

1. Centrifuge at 5,000xg for 5min.
2. Carefully open the tube and add 100ul of sterile water to dissolve the DNA.
3. Close the tube and incubate for 10 minutes at room temperature.
4. Briefly vortex the tube and then do a quick spin (less than 5000xg) to concentrate the liquid at the bottom.
5. Store the suspended plasmid at -20°C. The DNA is stable for at least one year from date of shipping when stored at -20°C.

RefSeq: [NM_001170567.1](#), [NP_001164038.1](#)

RefSeq Size: 7944 bp

RefSeq ORF: 4776 bp

Locus ID: 277854

UniProt ID: [P61460](#)

Cytogenetics: 5 17.35 cM

MW: 180.8 kDa

Gene Summary: As a component of the GATOR1 complex functions as an inhibitor of the amino acid-sensing branch of the TORC1 pathway. The GATOR1 complex strongly increases GTP hydrolysis by RRAGA and RRAGB within RRAGC-containing heterodimers, thereby deactivating RRAGs, releasing mTORC1 from lysosomal surface and inhibiting mTORC1 signaling. The GATOR1 complex is negatively regulated by GATOR2 the other GATOR subcomplex in this amino acid-sensing branch of the TORC1 pathway.[UniProtKB/Swiss-Prot Function]