

## Product datasheet for MR217391

### Abcc10 (NM\_170680) Mouse Tagged ORF Clone

#### Product data:

**Product Type:** Expression Plasmids  
**Product Name:** Abcc10 (NM\_170680) Mouse Tagged ORF Clone  
**Tag:** Myc-DDK  
**Symbol:** Abcc10  
**Synonyms:** mFLJ00002; Mr; Mrp7  
**Vector:** pCMV6-Entry (PS100001)  
**E. coli Selection:** Kanamycin (25 ug/mL)  
**Cell Selection:** Neomycin  
**ORF Nucleotide Sequence:** >MR217391 ORF sequence  
 Red=Cloning site Blue=ORF Green=Tags(s)

TTTTGTAATACGACTCACTATAGGGCGGCCGGAATTCGTCGACTGGATCCGGTACCGAGGAGATCTGCC  
 GCC**CGATCGCC**

ATGGAGGGGCTCCTGGCCAGCTGTGTGGCACGGACGGCGCGGCCGCTCCCGCTGTGGGAAGGGGACA  
 CGACGGGGCACTGCTTACCCAGCTGGTGTCTCAGCGCCCTTCCCACGCGCTCCTCGCCGCTCCTCAGTGC  
 CTGCCACTTGGGCACCCCAAGGACTACCAATCACTCCCAGCTCTCAATCCTGGCTGGCGCTCCGACTC  
 GCAGCATCCTTCCTCCTTCCATCTTCCACTGTAGACCTCCTTCCAGTTGTTTTGCCTCCAGGGTCAC  
 GCCCAGGGCCCTTATGGCTAGAGGTGCTAGCAGGGTGTGTGACAGCTGTGGCCTGGTTACCCACAGCCT  
 GGCCCTGTGGGCACTGGTTCATTCCTCATGGCCGTTCCCGTGGACCCTTGGCCTTGGCTCTGGCAGCC  
 TTTCTACCAACCCCGCCCTGGTACTAACTCTGCTGTGGCATTGCCAGCGAGGTACATTTCTGCCCCAC  
 TTCTCCAGGACCTCTGGGCCGTGTGTCTTCTCATTCTGCAACTGGCAGCAGTCTTGGCCTATGGGT  
 GGGCTGGGAGCCCTGGGGACCACAAGAGCCCTGGACTCATGATCCCTTCTGTCTGTGAGAGTCAA  
 GAAACAGAGGTAGCTGAAGATGGAGAGAGTTGGCTGTACGCTTTTCTATGCCTGGTTGGCACCCTTGC  
 TTGCTCGTGGAGTCCGAGGAGAGCTCCAGCAGCCCGGGACACTTGCCGCTCCCGCAGGCTGCATCC  
 TGCCCTTCTGGCCGAGTTTTCCAAGCACATTGGAAGGAGGGGCCCAACTGTGGAGGGCCCTGTACAGG  
 GCCTTTGGATGTTGCTACCTGGCCCTTGGACTGTTGAAGATGGTGGGACCATGCTGGGATTCTCCGGC  
 CTCTGCTGCTCTCCCTCCTGGTGGGCTTCTGGAGGAAGGTCAAGAGCCTCTAAGCCACGGCCTGCTCTA  
 TGTCTGGGGTTGGCTGGTGGGACTGTGATAAGTGTGTGCTGCAGAATCAGTATGGGTATGAGTCCGT  
 AAAGTGACACTTCAGGCACGAGTGGCTGTGCTGAGCACCTCTACCGCAAAGCCCTGAAGCTTGGGCCCA  
 GCCGCCCTCCACGGGGAGTCTGAACCTACTAGGCACCGACTCCGAGAGGCTGCTCAACTTTGCTGG  
 CAGCTTCCATGAGGCTGGGCTGCTCTGCAGCTGGCCATCACTCTACCTGCTGTACCAGCAGGTG  
 GGCATGGCCTTCTGGCTGGGCTGGTCTTGGCGCTGCTGCTGGTACCTGTCAACAAAGTATTGCCACCC  
 GAATCATGGCCAGCAACCAGGAGATGCTACGGCACAAGGATGCACGGGTTAAGCTCATGACAGAGTACT  
 GAGTGGCATTGAGTCAAAATTTCTCAGGTGGGAGCAGGCTCTGGGGACCGAGTGAAGGCTTGGCCG  
 ACTAAAGAGCTGGGACGACTCCGTGTTATCAAATACTTGGATGCAGCCTGTGTGTACCTCTGGGCTGCC



[View online >](#)

TGCCAGTGGTCATCTGCATCACCATCTTCATCACCTATGTCCTCATGGGGCACCAGCTCACTGCCACCAA  
 GGTGTTTACAGCGCTGGCGCTTGTGCGCATGCTCATTCTTCTCTCAACAACCTCCCTGGGTGATCAAT  
 GGTCTCTTGAATCCAAAGTATCCCTGGACCGGATCCAGCGTTTCTCGATCTTCCAAGCTACAGCCCTG  
 AGGCCTATTACAGTCTGATCCCCCGCAGAGCCCTCCACAGCACTGGAGCTGCACGAGGCCCTGTTCTC  
 CTGGGACCCAATTGGAGCAAGCCAGAAGACCTTCATCAGTCACCTCCAAGTAAAAAGGGTATGCTGGTG  
 GGCATCGTGGGAAAGGTGGCTGTGGGAAGAGTTCGCTGCTGGCCGCCATCACTGGGAGCTCCACAGGC  
 TGTGTGGATGGTGGCAGTGTGAGAAGTGTCCAAGGCTTGGACTAGCCACCCAGGAACCTGGATCCA  
 GTGTGCCACCATCCGAGACAACATCCTCTTTGGGAAGACATTTGATGCTCAACTATACAGGGAGTTCTG  
 GAGGCCTGCGCCCTCAATGATGATCTAAGTATCCTGCCTGCTGGAGACCAGACAGAGTTGGAGAGAAAAG  
 GTGTGACCCTCAGCGGGGACAGAGGGCCCGATTGCACTTGCCCGTGTGTCTACCAGGAGAAAGCACT  
 CTATCTCTCGACGACCCTCTGGCTGTGTGGATGCGATGTGGCCAACCACTGTTACACAGGTGCATC  
 CTGGGAGTGTGAGCCACACCACCCGGCTGTGTGCACCACCGCACTGAGTACCTGAAAAGGGCTGATG  
 TGGTGTGTTGATGGAAGCCGGCAATTGGTCCGAACAGGGCCTCCCTCTGAGATCTGCCGCTGGTACA  
 AGCTGTCCCCACAGCCTGGGCTGAGAAGGAACAAGTGGTACCTCAGGCCAGTCCCATCTGTATGCGAC  
 CTGGAGAGAACCACCGAGGAGTGGAGGTGGAACAGAGCACATGCGGCTGCCTCGTGCAGGAGGAAA  
 GCAAAAGCGAGGGCGCCGTAGCCCTGCAGTCTACCGAGCATACTGGAGGGCCATGGGCAGCGGCCCTGGC  
 CGCCGCCATCCTCGTCTCTGTCTCTCATGCAAGCCACGCGCAACGGTGTGATTGGTGGCTCGCTCAC  
 TGGCTGTCTCAGCTGAAGGCCGGCAGAAATGGATCCAGGGAGGATCCAGCTTCTGCAGCCAGGCTCCA  
 CAGCACTTCTCCCCACGGCTGCTTCTTCTCCCTGGAAACCTCTACACCCCACTGCTCAGCACCCC  
 ACTGCACAAGGCTGTTCCAATGGCACCAGCAGCTCCACTTCTACCTCATCGTGTATGCAACCAATTGCA  
 GGGGTGAACCTCCCTCTGCACCCTTCTCCGGCTGTGCTCTTTCAGCAGGCGCCCTTCAAGCAGCTGCCA  
 GCCTACACCACCGCTACTGCATCGACTCCTCATGGCACCAGTACTTCTATGACTCCACACCTTCCGG  
 CCGGGTCTTGAACCGCTTCTCATCAGAGTACTGTGTAGACGACAGCCTGCCCTTCTCCTCAACATC  
 CTGCTGGCCAATTCCGTGGGCCTGCTGGCCTCCTGGCTGTCTAGGTTCTGGTCTGCCCTGGCTGCTGC  
 TCTGCTACCACCTCTGAGCTTCTGCTACTACAGCGTGCAGGGCTACTACAGGGTCTCCTCCGGGAGCT  
 ACGGCGCCTGGGCAGCCTCACCTGGTCTCCGCTTACTCCCATCTGGCTGACACCCTGGCAGGCCTCCCT  
 GTGCTCCGGGCTGCAGGGGCCACTTACAGGTTTGAAGAGGAGAACCAGCGACTCTTGAGGCTGAACCAGA  
 GGTGCCAGTTTGTCTCTATGCCAGATGCAGTGGTTGGACATTCGACTGCAGCTCATGGGGCAGCAGT  
 GGTGAGCGCCATTGCGGGCATTGCCCTGGTGCAGCACCAGCAGGGCCTTGCCAACCCAGGGCTGGTGGGC  
 CTCGTGCTTCTATGCCCTGTCTGACGGCCCTGCTCTCGGGTCTGGTGAAGCAGTTTACACAGACGG  
 AAGCCATGATGGTGAAGCTGCGAGCGACTGGAGGAGTATCCTGTGACGTTCCCCAGGAGCCACAGCCA  
 GCCACTGCAGTACCCCAACAGCAGCGCATCAGCTGGCTGACCCAGGGAAGTGTGGAATTCCAGGAGCTG  
 GTGCTGGTGTACCGGCCAGGGCTGCCAAATGCCCTAGATGGGGTGACCTTCCGTGTGGAGCCTGGAGAGA  
 AGCTGGGCATCGTGGGCCGCACAGGCTCCGGCAAGTCTCCCTGTTTCTGGTGTCTTCCGGCTGTGGA  
 GCCCAACGCAGGGCGAGTGTCTCTGGACAATGTGGACACCAGCCAGCTGGAGCTGGCCGAGCTCAGATCC  
 CAGCTGGCTGTATCCCTCAGGAGCCTTCTGTTTCCAGCGGACTATTCCGGGAGAACCTGGACCCCAAGG  
 GCCTACACGAGGACAGGGCCCTGTGGCAAGCCTTGAACAGTGTACCTGAGTGAAGTGGTGTGCGCAT  
 CTGGCAAGGGCTTCTTACAGATGCTAAAATCTTGTGATTGACGAGGCCACAGCAAGTGTGGACCAGA  
 AGACAGACCAGCTGCTCCAGCAAACCATCTGTAACGCTTTGCCAACAAGACAGTGTGACCATCGCCCA  
 CAGGCTCAACACGATCCTAAACTCTGACCGTGTGCTGGTGTCCAAAGCCGGGAGGGTGGTGAACCTGGAC  
 TCCCCCTCAGCCCTGCGCAACCAGCCGCACTCCCTGTTCCAGCAGCTCCTGCAGAGCAGCCAGCAGGGAG  
 CCCACTCCGGACCTTCAGGGTGC

ACGCGTACGCGGGCCGCTCGAGCAGAAAACCTCATCTCAGAAGAGGATCTGGCAGCAAATGATATCCTGGATT  
 ACAAGGATGACGACGATAAGGTTTAA

**Protein Sequence:**

>MR217391 protein sequence  
 Red=Cloning site Green=Tags(s)

```
MEGLLAQLCGTDAARPLPLWEGDTTGHCFQVLVSALPHALLAVLSACHLGTPTTNNHSPALNPGWRLRL
AASFLLSIFPLLDLLPVVLPFSGSRPGPLWLEVLACVAVAWFTHSLALWALVHSPHGRSRGPLALALAA
FLPTPALVLTLLWHCQRGTFLLPPLPGPLGRVCLLILQLAAVLAAYGLGWAAPGGPQEPWTHDPFLSSESQ
ETEVAEDGESWLSRF SYAWLAPLLARGVREGELQQPRDTCRLPRRLHPAFLARVFQAHWKEGAQLWRALYR
AFGCCYLALGLLKMGVTMLGFSGPLLLSLLVGFLEEQEPESHGLLLYVLGLAGGTVI SAVLQNYGYEVR
KVTLQARVAVLSTLYRKALKLGPSPPTGEVNLGLGDSERLLNFAGSFHEAWGLPLQLAITLYLLYQQV
GMAFLAGLVLALLVPVNVKIATRIMASNQEMLRHKDARVKLMTPELLSGIRVIKFFRWEQALGDRVKACR
TKELGRLRVIKYLDAAVCYLWALPVVICITIFITYVLMGHQLTATKVFTALALVRMLILPLNFPWVIN
GLLLESKVSLDRIQRFLDLPSYSPEAYSPDPPAEPSTALELHEALFSDWPIGASQKTFISHLQVKKGMLV
GIVGKVGCGKSSLLAAITGELHRLCGWVAVSEL SKGFGLATQEPWIQCATIRDNILFGKTFDAQLYREVL
EACALNDDL SILPAGDQTEVGEKGVTL SGGQRARIALARAVYQEKALYLLDDPLAAVDADVANHLHRCI
LGVLSHTTRLLCTHRTEYLERADVLLMEAGQLVRTGPPSEILPLVQAVPTAWAEKEQVATSGQSPSVC
LERTTEEELEVEQSTCGCLVQEESKSEGAVALHYRAYWRAMGSLAAAAILVSLLLMQATRNGADWWLAH
WLSQLKAGRNGSREDPASCSPGSTALFSPRLLFSPGNLYTPLLSTPLHKAASNGTADVHFYLVIVYATIA
GVNSLCTLLRAVLAAGALQAAAASHHRLHRLMAPVTFYDSTPSGRVLRNFSSDVACVDDSLPFLNLI
LLANSVGLLGLLAVLGSGLPWLLLLPPLSFVYYSVQGYRASFRRLRRLGSLTWSPLYSHLADTLAGLP
VLRAAGATYRFEENQRLELNQRCQFASYATMQWLDIRLQMGAAVVSATAGIALVQHQQGLANPGLVG
LVL SYALSLTGLLSGLVSSFTQTEAMMVSVERLEEYSCDVPQEPHSQPLQSPHQQRISWL TQGSVEFQDV
VLVYRPGLPNALDGVTFRVEPGEKLGIVGRTGSGKSSFLVLRLEPNAGRVLLDNVDTSQLLEAELRS
QLAVIPQEPFLFSGTIRENLDPQGLHEDRALWQALEQCHLSEVAVAMGGLDGELGERGQNL SLGQRQLLC
LARALLTDAKILCIDEATASVDQKTDQLLQQTICKRFANKTVLTI AHRNLNTILNSDRVVLVQAGRVVELD
SPSALRNQPHSLFQQLQSSQQAHSGPSGC
```

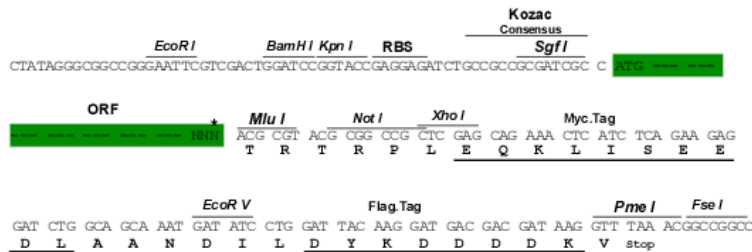
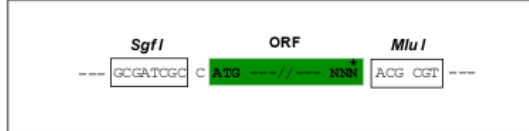
TRTRPLEQKLISEEDLAANDILDYKDDDDKV

**Restriction Sites:**

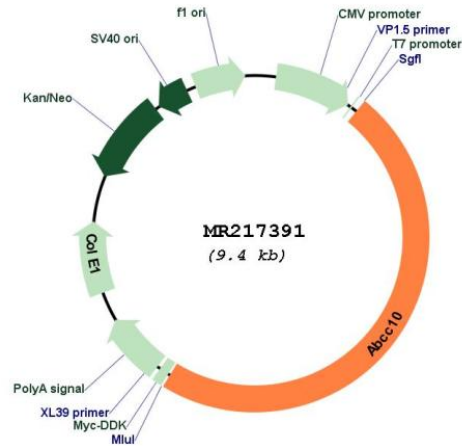
SgfI-MluI

**Cloning Scheme:**

Cloning sites used for ORF Shuttling:



\* The last codon before the Stop codon of the ORF

**Plasmid Map:**


**ACCN:** NM\_170680

**ORF Size:** 4503 bp

**OTI Disclaimer:** The molecular sequence of this clone aligns with the gene accession number as a point of reference only. However, individual transcript sequences of the same gene can differ through naturally occurring variations (e.g. polymorphisms), each with its own valid existence. This clone is substantially in agreement with the reference, but a complete review of all prevailing variants is recommended prior to use. [More info](#)

**OTI Annotation:** This clone was engineered to express the complete ORF with an expression tag. Expression varies depending on the nature of the gene.

**Components:** The ORF clone is ion-exchange column purified and shipped in a 2D barcoded Matrix tube containing 10ug of transfection-ready, dried plasmid DNA (reconstitute with 100 ul of water).

<b>Reconstitution Method:</b>	<ol style="list-style-type: none"><li>1. Centrifuge at 5,000xg for 5min.</li><li>2. Carefully open the tube and add 100ul of sterile water to dissolve the DNA.</li><li>3. Close the tube and incubate for 10 minutes at room temperature.</li><li>4. Briefly vortex the tube and then do a quick spin (less than 5000xg) to concentrate the liquid at the bottom.</li><li>5. Store the suspended plasmid at -20°C. The DNA is stable for at least one year from date of shipping when stored at -20°C.</li></ol>
<b>RefSeq Size:</b>	4872 bp
<b>RefSeq ORF:</b>	4506 bp
<b>Locus ID:</b>	224814
<b>UniProt ID:</b>	<a href="#">Q8R4P9</a>
<b>Cytogenetics:</b>	17 C
<b>MW:</b>	163.7 kDa
<b>Gene Summary:</b>	<p>The protein encoded by this gene is a member of the superfamily of ATP-binding cassette (ABC) transporters. ABC proteins transport various molecules across extra- and intra-cellular membranes. ABC genes are divided into seven distinct subfamilies (ABC1, MDR/TAP, MRP, ALD, OABP, GCN20, and White). This ABC transporter is a member of the MRP subfamily which is involved in multi-drug resistance. Alternative splicing of this gene results in multiple transcript variants. [provided by RefSeq, Jul 2008]</p>