

Product datasheet for **MR217258**

Megf11 (NM_172522) Mouse Tagged ORF Clone

Product data:

Product Type:	Expression Plasmids
Product Name:	Megf11 (NM_172522) Mouse Tagged ORF Clone
Tag:	Myc-DDK
Symbol:	Megf11
Synonyms:	2410080H04Rik; D130061K05
Mammalian Cell Selection:	Neomycin
Vector:	pCMV6-Entry (PS100001)
E. coli Selection:	Kanamycin (25 ug/mL)



[View online »](#)

ORF Nucleotide Sequence:

>MR217258 representing NM_172522
 Red=Cloning site Blue=ORF Green=Tags(s)

TTTTGTAATACGACTCACTATAGGGCGGCCGGGAATTCGTCGACTGGATCCGGTACCGAGGAGATCTGCC
 GCC**CGGATCGCC**

ATGGCGCCGTCTGCGGTGGGCCTCCTTGTCTTCTCTGCAAGCTGCTCTTGCTCTGAACCTGAAGACC
 CCAATGTGTGTAGCCACTGGGAGAGCTATGCCGTGACTGTGCAGGAGTCTTATGCACACCCCTTTGATCA
 GATCTACTACACACGATGTGCAGACATCCTCAACTGGTTCAAGTGTACCCGGCACCGGATCAGCTATAAG
 ACCGCGTATAGGCGCGCCTCCGGACCATGTACCGGCGGAGGTCCCAATGCTGCCCTGGCTACTATGAGA
 ACGGAGACTTCTGCATTGCTGTGACAGCGAGCACTGGGGTCCCCACTGCAGCAACCGGTGTCAAGTGTCA
 GAACGGCGCCCTGTGCAACCTATACCGGCGCCTGCGTGTGCGCCCCGGGCTTCCGAGGCTGGCGCTGT
 GAGGAATCTGCGCTCCTGGTACTCACGGCAAGGGCTGCCAGTGTCTGTCAAGTGTGCCACCATGGCGCCA
 GCTGTGACCCGCGCACTGGGAGTGCCTCTGCGCTCCTGGCTACACAGGCGTTTACTGTGAGGAGCTGTG
 CCCCCCTGGGAGCCATGGAGCTCACTGTGAGTGTGCGCTGCCCTGCCAGAATGGAGGCACCTGCCACCAC
 ATCACTGGCGAATGTGCCTGCCCTCCAGGCTGGACGGGAGCAGTGTGTGCCACGCCCTGCCCTCCAGGGA
 CCTTTGGCCAGAAGTGTAGCCAGGACTGTCCCTGCCACCATGGAGGCCAGTGTGACCATGTGACTGGACA
 ATGCCACTGTACAGCTGGATACATGGGGGACAGGTGTCAAGAAGAATGTCCCTTTGGAACGTTCCGGTTTC
 CTGTGCTCTCAACGCTGTGACTGCCACAATGGAGGTCAATGTTCAACAGCCACAGGGGCCTGTGAGTGTG
 AGCCTGGCTACAAGGGCCCTAGCTGCCAGGAGCGGCTATGCCCTGAGGGCCTGCATGGCCAGGCTGCAC
 CTTGCCCTGCCCTGTGACACCGAGAACACTATCAGTGCATCCAGTTACTGGAGCTTGTACCTGCCAA
 CCAGGCTGGTCTGGCCACTACTGCAATGAGTCTGCCCGCCGGCTACTATGGCAACGGTGGCCAGCTAC
 CCTGCACCTGCCAGAACGGTGTGACTGCCACAGTATCACCGGGAGCTGCACTTGTGCTCCAGGCTTCA
 GGGAGAGGTGTGTGCCGTCCCTGTGCTGCAGGGACCTATGGTCCCAACTGTTCACTGTATGTAGCTGT
 AGCAACGGCGGCACCTGTTCCCAAGTGGATGGCTCCTGCACCTGCCGAGAGGGATGGCAGGGCCTGGACT
 GCTCCCTGCCTTGTCCCAGTGGGACCTGGGGCCTGAACTGCAATGAGACTTGCATCTGTGCCAATGGAGC
 TGCCTGCAGCCCTTTGATGGGTCTGTGCTGCACCCAGGCTGGCTGGGGGACTCCTGTGAACTGCC
 TGCCCGGACGGCACTTTTGGGCTGAACTGCAGTGAAGCATTGCGACTGCAGCCATGCTGATGGCTGTGACC
 CTGTACAGGCCACTGCTGCTGCCTGGCAGGATGGACAGGCATCCGCTGTGATAGCACGTGCTCCTCAGG
 TCGCTGGGGCCCCAACTGTTCAAGTGTCTGAGCTGTGAGAACGGAGGTTCTGCTCCCCGAGGACGGG
 AGCTGCGAGTGTGCCCTGGCTTTGAGGACCCCTTATGTCAGAGAATCTGCCACCAGGATTCTACGGCC
 ATGGCTGCGCCAGCCTTGTCCCTCTGCGTGCACAGCAGGGGGCCCTGCCACCACATCAGTGGTATCTG
 TGAGTGCCTGCCAGGATTCTCTGGAGCCTTGTGCAACCAAGTGTGTGCTGGAGGGCACTTCGGGCAGGAC
 TGTGCCAGCTCTGTTCCCTGTGCCAACAATGGGACCTGCAGCCCATCGATGGCTCCTGTGAGTGTCC
 CTGGGTGGATTGGCAAGGACTGCTCACAGGGTTGCCCTTCCAGATTTTTTGGGAAGGACTGTGGGCACAT
 ATGCCAGTGTGAGAAAGGAGCAGCTGTGACCACATCACTGGGAAATGCACCTGTGCAACAGGCTTCTCT
 GGCCGCCACTGTGAACAGAGATGTGCCCTGGAACCTTTGGATATGGGTGTGAGCAGCTATGTGAGTGCA
 TGAACAATGCCACTTGTGACCACGTCACTGGTACCTGTTACTGTAGCCCGGGATTCAAAGGAATCAGGTG
 TGACCAAGCTGCCCTCATGATGGATGAGCTGAATCCCTACACCAAGATCAGTCCAGCTCTGGGAGCAGAG
 CCGCACTCAGTGGGTGCTGTACCGGCATCGTTCCTCTGTTGTTCCCTGGTGGTGGTGTGCTGGCCTGT
 TTGCCTGGCGACGGAGGGCGGAGAAAGAGAAAGGCGGTGACCTGGCTCCCCGAGTCTCCTACACCCAGC
 CATGAGGATGACCAGCACAGACTACTCTCTCAGATTTGTCTCAAAGTAGCAGCCATGCCAGTGTCTT
 TCCAATGCCAGCTACCACACACTGGCGTGTGGGGGCCTGCCACCAGCCAGGCCAGCACTCTGGACAGGA
 ACAGCCCCACCAAGCTCAGTAACAAGTCCCTTGACAGAGACACAGCAGGCTGGACCCCTACAGCTATGT
 GAACGTGTTAGACTCCCATTTCCAGATCAGTGCCTGGAGGCCAGGTACCCGCCCCGAGGACTTCTACATT
 GAACTTAGACACCTCAGCCGCACTGCTGAGCCACACTCACAGGCACTTGTGGAATGGACAGACGTCAGA
 ACACATACATTATGGACAAGGCTTCAAAGTTGCACCTGCT

ACGCGTACGCGGCCGCTCGAGCAGAAACTCATCTCAGAAGAGGATCTGGCAGCAAATGATATCCTGGATT
 ACAAGGATGACGACGATAAGGTTTAA

Protein Sequence: >MR217258 representing NM_172522
 Red=Cloning site Green=Tags(s)

MAPSAVGLLVFLLQAALALNPEDPNVCSHWESYAVTVQESYAHFPDQIYYTRCADILNWFKTRHRISYK
 TAYRRGLRTMYRRRSQCCPGYYENGDFCIRCDSEHWGPHCSNRCQCONGALCNPITGACVCAPGFRGWRC
 EELCAPGTHGKGCQLLCQCHHGASCDPRTGECLCAPGYTGVYCEELCPPGSHGAHCELRPCQNGGTCHH
 ITGECACPPGWTGAVCAQPCPPGTFGQNCSDQDCPCHGGQCDHVTGQCHCTAGYMGDRQCQECPFGTFGF
 LCSQRCDCHNGGQCSPATGACECEPGYKGPSCQERLCPEGLHGPCTLPCCDENTISCHPVTGACTCQ
 PGWSGHYCNESCPAGYYNGCQLPCTCQNGADCHSITGSCTCAPGMGEVCAVPCAAGTYPNCSVSCSC
 SNGGTCSPVDGSCTCREGWQGLDCLSLPCPSGTWGLNENETICANGAACSPFDGSCACTPGWLGDSCELP
 CPDGTGFLNCSHCDCSHADGCDPVTGHCCLAGWTGIRCDSTCPPGRWGPNCVSVSCSENGGSCSPEDG
 SCECAPGFRGPLCQRICPPGFYGHGCAQPCPLCVHSRGPCHHISGICECLPGFSGALCNQVCAGGHFGQD
 CAQLCSCANNGTCSPIDGSCQCFPGWIGKDCSQGCPAFFGKDCGHCICQCQNGASCDHITGKTCRTGFS
 GRHCEQRCAPGTFGYGCQQLCECMNATCDHVTGTCTYCSPGFKGIRCDQAALMDELNPYTKISPALGAE
 RHSVAVTGIIVLLLFLVVLLGLFAWRRRRQKEKGRDLAPRVSYTPAMRMTSTDYSLSDLQSSSHAQCF
 SNASYHTLACGGPATSQASTLDRNSPTKLSNKSLDRDTAGWTPYSYVNVLDLDFHFIQISALEARYPPEDFYI
 ELRHLSRHAEPHSPGTCGMDRRQNTYIMDKGFKVAPA

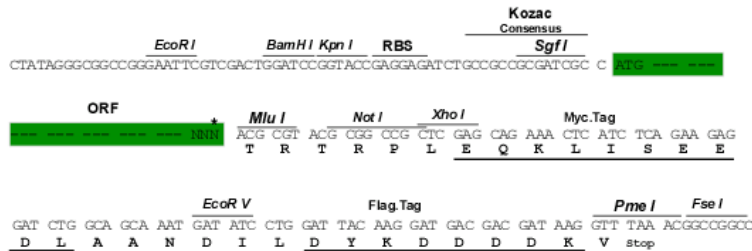
TRTRPLEQKLISEEDLAANDILDYKDDDDKV

Chromatograms: https://cdn.origene.com/chromatograms/mm9002_g09.zip

Restriction Sites: SgfI-MluI

Cloning Scheme:

Cloning sites used for ORF Shuttling:



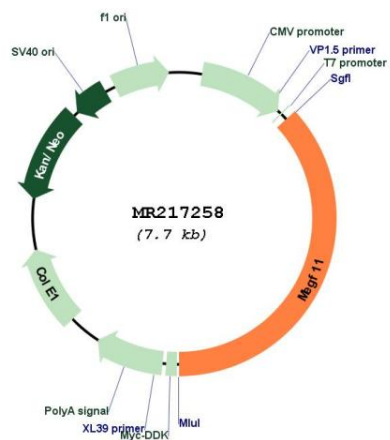
* The last codon before the Stop codon of the ORF

ACCN: NM_172522

ORF Size: 2841 bp

OTI Disclaimer:	The molecular sequence of this clone aligns with the gene accession number as a point of reference only. However, individual transcript sequences of the same gene can differ through naturally occurring variations (e.g. polymorphisms), each with its own valid existence. This clone is substantially in agreement with the reference, but a complete review of all prevailing variants is recommended prior to use. More info
OTI Annotation:	This clone was engineered to express the complete ORF with an expression tag. Expression varies depending on the nature of the gene.
Components:	The ORF clone is ion-exchange column purified and shipped in a 2D barcoded Matrix tube containing 10ug of transfection-ready, dried plasmid DNA (reconstitute with 100 ul of water).
Reconstitution Method:	<ol style="list-style-type: none">1. Centrifuge at 5,000xg for 5min.2. Carefully open the tube and add 100ul of sterile water to dissolve the DNA.3. Close the tube and incubate for 10 minutes at room temperature.4. Briefly vortex the tube and then do a quick spin (less than 5000xg) to concentrate the liquid at the bottom.5. Store the suspended plasmid at -20°C. The DNA is stable for at least one year from date of shipping when stored at -20°C.
RefSeq:	NM_172522.4 , NP_766110.3
RefSeq Size:	3669 bp
RefSeq ORF:	2844 bp
Locus ID:	214058
UniProt ID:	Q80T91
Cytogenetics:	9 C
MW:	101.1 kDa
Gene Summary:	May regulate the mosaic spacing of specific neuron subtypes in the retina through homotypic retinal neuron repulsion. Mosaics provide a mechanism to distribute each cell type evenly across the retina, ensuring that all parts of the visual field have access to a full set of processing elements.[UniProtKB/Swiss-Prot Function]

Product images:



Circular map for MR217258