

Product datasheet for **MR217225**

Rbm25 (NM_027349) Mouse Tagged ORF Clone

Product data:

Product Type:	Expression Plasmids
Product Name:	Rbm25 (NM_027349) Mouse Tagged ORF Clone
Tag:	Myc-DDK
Symbol:	Rbm25
Synonyms:	2600011C06Rik; 2610015J01Rik; A130095G20Rik; A1159652; AL023075; AU043498; RNPC7
Mammalian Cell Selection:	Neomycin
Vector:	pCMV6-Entry (PS100001)
E. coli Selection:	Kanamycin (25 ug/mL)



[View online »](#)

ORF Nucleotide Sequence:

>MR217225 representing NM_027349
 Red=Cloning site Blue=ORF Green=Tags(s)

TTTTGTAATACGACTCACTATAGGGCGGCCGGAATTCGTGACTGGATCCGGTACCGAGGAGATCTGCC
 GCC**CGGATCGCC**

ATGTCCTTTCCCCCTCATTGAATCGCCCTCCCATGGAATCCCAGCTCTCCCTCCAGGGATCCCACCCC
 CACAGTTTCCTGGCTTCTCCACCAGTACCTCCAGGGACACCGATGATTCTGTACCAATGAGTATTAT
 GGCTCCTGCTCCAAGTGTCTAGTACCTACCGTGTCCATGGTTGAAAGCATTGGGAGCCAGAAAGGAT
 CATCCAGGCTTAAAATAAAAGAAAATGATGAAAATTGTGGCCCTACTACTACAGTTTTTGTTGGGAACA
 TTTCTGAGAAGGCTTCAGACATGCTTACGACAGCTCTAGCTAAATGTGGTTGGTGTGAGCTGGAA
 GAGAGTCAAGGTGCTTCTGGGAACTCAAGCTTTGGATTTGTGAGTATAAGAGCCTGAATCTACC
 CTCGGTCTCAGATTATGCATGACCTCAGATTGGAGAGAAGAAGCTACTTGTAAAGTTGATGCCA
 AGACAAAGGCACAGTTGGATGAATGAAAGCAAAGAAGAAGCTAATGGGAACGCCAGACCAGAACTGT
 CACTAATGATGATGAAGAAGCCTTAGATGAAGAAACAAAGCGAAGAGACCAGATGATTAAGGGGCCATT
 GAAGTTTTAATCCGAGAATATCCAGTGAATAAATGCCCTCACAGGAGTCTGACTCTACCCAGAA
 AGAAGAAAAGGAAAAGAAGGAGGACATTTCCGTAGATTTCCAGTGGCCCCATTGATCCCTTACCCACT
 CATCACCAGGAGGATATAAATGCTATTGAAATGGAAGAAGACAAAAGAGATTTGATATCCCGAGAGATC
 AGCAAAATTCAGAGATACACACAAGAACTGGAAGAAGAGAAAAGGCCAAAAAGAAAAGAAAGACAGGAAA
 TTGAGAAAAGAACGGAGAGAAAAGAGAGAGGGAACGTGAAAGGGAACGAGAAAAGCGGAGAACGGGAACGAGA
 AAGGAAAAGAGAACGTGAACGAGAAAAGGAAAAGAACGGGAGCGGGAACGAGAACGGGATAGGGATCGT
 GACCGCACAAAAGAGAGAGACCGAGATCGAGAGAGAGATCGGGACCGAGATCGAGAACGGAGCTCAGATC
 GAAATAAGGATCGGAGTCGATCAAGAGAAAAGCAGAGATCGTGAAGGGAACGGGAGCGGGAAGGAAAGAG
 GAGAGAACGAGAACGGGAACGAGAACGAGAGAGAGAACGGGAGAGAGAACGGGAACGGGAACGGGAAGA
 GAGAAAAGACAAGAAAAGAGACAGAGAAGAGGATGAAGAAGATGCATATGAACGAAGAAAACCGAACGAA
 AACTGCGAGAGAAAAGAGGCTGCTTATCAAGAGCGCCTTAAGAATTGGGAAATCAGAGAACGAAAAGAAAAC
 TAGGGAATATGAGAAGGAGGCAGAAAAGAGAAGAAGAAGAAGAAGAGAAATGGCTAAGGAGGCTAAACGA
 CTAAGAAGAAATTCCTAGAAGATTATGATGATGATAGAGATGACCCGAAGTACTACAGGGGTAGTGCTCTTC
 AGAAACGGTTGCGTGATAGGAAAAGAAATGGAAGCTGATGAACGAGACAGGAAGAGAGAGAAGGAAGA
 GCTTGAGGAAATCAGGCAGCGCTTACTGGCAGAAGGGCATCCAGATCCAGATGCAGAGCTCCAGAGGATG
 GAACAAGAGGCTGAGAGGCGCAGGCAACCTCAAATAAAGCAAGAACCAGAATCCGAGGAAGAAGAAGAAG
 AAAAGCAAGAAAAGAAGAAAACGAGAGGAGCCTGTGGAAGAGGAGGAAGAACCAGAGCAAAAGCCTTG
 TCTCAAGCCGACTTTGAGACCCATCAGCTCTGCCCATCTGTGTCTCTGCCAGTGGCAACGCAACCCCC
 AACACTCTGGGGATGAGTCTCCTTGTGGTATTATTATTCCTCATGAAAACCTACCAGATCAACAGCAGC
 CTGAGGAGCATAGGCCAAAAATAGGACTAAGCCTTAAATTTGGTGCTTCCAATAGTCTGGCCAACCTAA
 TTCAGTGAAGAGAAAAGAACTACCTGTAGATAGTGTCTTAAACAAATTCGAGGATGAGGACAGTGATGAT
 GTGCCCGAAAAGGAACTCGTTCCCTGGATTATGGCGAAGATGATAAAAATGCCACCAAAAGGCACTG
 TAAACACTGAAGAAAAGCGCAAACACATTAAGAGTCTCATTGAGAAAATCCCACAGCCAAACCTGAGCT
 CTTTGCTTATCCTTTGGATTGGTCTATTGTGGATTCTATACTGATGGAACGAAGAATCCGGCCATGGATC
 AAATAAGAAAATCATCGAATACATAGGTGAAGAAGAAGCTACATTAGTTGATTTTGTGCTTAAGGTTA
 TGGCACAATGTTACACAGAGCATTTTATAGATGATGTTGCCATGTTACTAGATGAAGAAGCAGAAGTTTT
 TATAGTCAAAATGTGGAGATTATTGATATATGAAACAGAAGCCAAGAAAATTGGCCTTGTGAAG

ACGCGTACGCGGCCGCTCGAGCAGAACTCATCTCAGAAGAGGATCTGGCAGCAATGATATCCTGGATT
 ACAAGGATGACGACGATAAGGTTTAA

Protein Sequence: >MR217225 representing NM_027349
 Red=Cloning site Green=Tags(s)

```

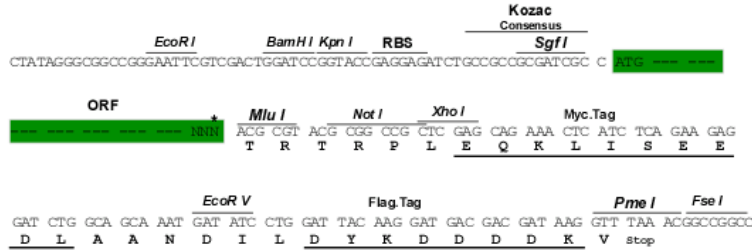
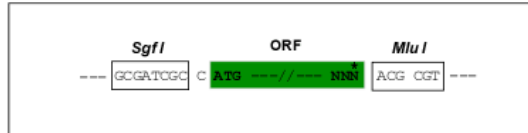
MSFPPHLNRPPMGIPALPPGIPPPQFPGFPPVPPGTPMIPVPMSIMAPAPTIVLPTVSMVGKHLGARKD
HPGLKLENDENCGPTTTFVGNISEKASDMLIRQLLAKCGLVLSWKRVQGASGKLQAFGFCEYKEPEST
LRALRLLHDLQIGEKLLVKVDAKTKAQLDEWKAKKKANGNARPETVTNDDEEALDEETKRRDQMIKGAI
EVLIREYSSELNAPSQESDHPKRRKKKEDIFRRFPVAPLIPYPLITKEDINAIEMEEDKRDLISREI
SKFRDTHKKLEEEKGKKEKERQEIEKERRERERERERERERERERERERERERERERERERERERER
DRTKERDRDRERDRDRERSSDRNKDRSRSREKSRDRERERERERERERERERERERERERERERER
EKDKKRDREDEEDAYERRKLERKLRKEAAYQERLKNWEIRERKKTREYEKEAEREERREMAKEAKR
LKEFLEDYDDDRDDPKYYRGSALQKRLRDREKEMEADERDRKREKEELEIRQRLLAEGHPDPAELQRM
EQEAERRRQPQIKQEPESEEEEEEKQEKKEEKEEPVEEEEEPEQKPKLPTLRPISSAPSVSSASGNATP
NTPGDESPCGIIPHENSPPDQQPEEHRPKIGLSLKLKASNSPGQPNVSRKRLPVDSVFNKFEDESDS
VPRKRRLVPLDYGEDDKNATKGTVNTTEERKHKHSLIEKIPTAKPELFAFPLDWSIVDSILMERRIRPWI
NKKIIEYIGEEEEATLVDFVCSKVMHSSPQSILDDVAMVLDEEAIEVIVKMWRLLIYETEAKKIGLVK
  
```

TRTRPLEQKLISEEDLAANDILDYKDDDDKV

Restriction Sites: Sgfl-Mlul

Cloning Scheme:

Cloning sites used for ORF Shuttling:



* The last codon before the Stop codon of the ORF

ACCN: NM_027349

ORF Size: 2514 bp

OTI Disclaimer: The molecular sequence of this clone aligns with the gene accession number as a point of reference only. However, individual transcript sequences of the same gene can differ through naturally occurring variations (e.g. polymorphisms), each with its own valid existence. This clone is substantially in agreement with the reference, but a complete review of all prevailing variants is recommended prior to use. [More info](#)
OTI Annotation: This clone was engineered to express the complete ORF with an expression tag. Expression varies depending on the nature of the gene.

Components: The ORF clone is ion-exchange column purified and shipped in a 2D barcoded Matrix tube containing 10ug of transfection-ready, dried plasmid DNA (reconstitute with 100 ul of water).

Reconstitution Method:

1. Centrifuge at 5,000xg for 5min.
2. Carefully open the tube and add 100ul of sterile water to dissolve the DNA.
3. Close the tube and incubate for 10 minutes at room temperature.
4. Briefly vortex the tube and then do a quick spin (less than 5000xg) to concentrate the liquid at the bottom.
5. Store the suspended plasmid at -20°C. The DNA is stable for at least one year from date of shipping when stored at -20°C.

RefSeq: [NM_027349.4](#)

RefSeq Size: 4244 bp

RefSeq ORF: 2517 bp

Locus ID: 67039

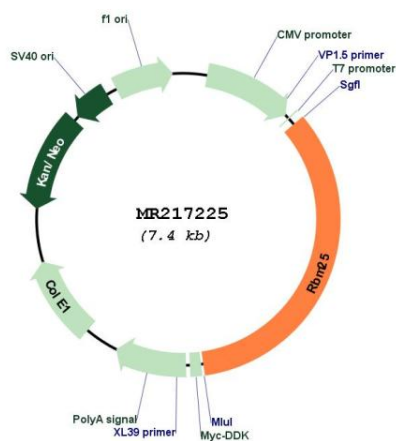
UniProt ID: [B2RY56](#)

Cytogenetics: 12 D1

MW: 99.6 kDa

Gene Summary: RNA-binding protein that acts as a regulator of alternative pre-mRNA splicing. Involved in apoptotic cell death through the regulation of the apoptotic factor BCL2L1 isoform expression. Modulates the ratio of proapoptotic BCL2L1 isoform S to antiapoptotic BCL2L1 isoform L mRNA expression. When overexpressed, stimulates proapoptotic BCL2L1 isoform S 5'-splice site (5'-ss) selection, whereas its depletion caused the accumulation of antiapoptotic BCL2L1 isoform L. Promotes BCL2L1 isoform S 5'-ss usage through the 5'-CGGGCA-3' RNA sequence. Its association with LUC7L3 promotes U1 snRNP binding to a weak 5' ss in a 5'-CGGGCA-3'-dependent manner. Binds to the exonic splicing enhancer 5'-CGGGCA-3' RNA sequence located within exon 2 of the BCL2L1 pre-mRNA (By similarity).[UniProtKB/Swiss-Prot Function]

Product images:



Circular map for MR217225