

Product datasheet for MR217222

Dusp27 (NM_001033344) Mouse Tagged ORF Clone

Product data:

Product Type:	Expression Plasmids
Product Name:	Dusp27 (NM_001033344) Mouse Tagged ORF Clone
Tag:	Myc-DDK
Symbol:	Dusp27
Synonyms:	C130085G02Rik; Gm209
Mammalian Cell Selection:	Neomycin
Vector:	pCMV6-Entry (PS100001)
E. coli Selection:	Kanamycin (25 ug/mL)
ORF Nucleotide Sequence:	>MR217222 ORF sequence Red=Cloning site Blue=ORF Green=Tags(s)

TTTTGTAATACGACTCACTATAGGGCGGCCGGAATTCGTCGACTGGATCCGGTACCGAGGAGATCTGCCGCCGCGATCGCC

ATGGCTACCGGTGGAGACGCAGAGGAGGAGCAGGTAGTTCCAAACGAGGAGGATGAAGCAGATGTGAGAGCTGTACAGGCCGCTATCTCCGGAGTCCCTCCCAAGCCAGTACTCGGTGGTCTCAGAGGCAGAAACCGA AAGCATCTTCATGGAGCCATCCACCTCTCCTCGGCTGTAGCTGCCAAACAGATCATCAACGAAGAACTC AAGCCTCGGGGGCTCAGAACAGACACTGAGTGTCCAGGCATGCTGGAGTCTGCTGAACAACCTGCTGGTGG AAGACCTGTACAACCGTGTCCGTGAGAAGATGGATGACAGGAGCCTGTTCAACACCCCTGTGTGTGGA CCTGCAGCGGGCCTGACCCAGGACCGCAAGAGGCCCTCGGAATGAGGTGGATGAGGTGTGGCCCAAC GTCTTCATAGCTGAGAAAAGCGTGGCTGTGAACAAGGGGCGGCTCAAGAGGCTGGGCATACCCACATTC TGAATGCCGCACATGGCAGAGGAGTTTACACTGGTTCTGAATTCTACACTGGCCTGGAGATCCAGTACCT GGGGGTGGAAAGTGGATGACTTCCCAGAGGTGGACATCTCCCAACATTTCCGGAAAGCAGCTGAGTTCCCT GACGAAGCTCTGCTGACCTACAGAGGAAAAGTCCGTGGTCAAGCAGTGAATGGGTATCAGCAGGTCAGCAG TGCTGGTGGTGCCTACCTGATGATCTTCCACAGCATGGCCATCCTGGAGGCCTGATGACTGTGCCGAG AAAGCGAGCTATCTACCCAATGACGGCTTCTAAAACAACCTGCGGGAGCTCAATGAGAAATTGATGGAG GAGAGGGAAGAGGAGGATGGTGAAGAGGAGTCTGAGGAAGATGCCGGGAGCATGCTGGGCTAGAGTCA ATTCAGTATGGTGAAGAAGAAGATGATGCCACTAGCCACTGAGTGGCTCCTCCTGGGGAAGGCCAG CCAGGTCTCCAAACAGTCACTCTTATTGATGACGAGGAGGAGGAGAAGAAGCTGTATGAAGAGTGGAGG AAGGGGCGAGGCTTCCCAAGGGGAGGCTGCTCAGGGTAGAAAGGGACGTAGCTGTTCTATGTCCTCAG CACAGGATGGAGACGACTGTGAGGATGAGGATGTAGAAAGGATAATCCAGGAGTGGCAGAGCCGAAATGA GAGGTACCAAGCCAAAGGGCGCAGCAGTGAACCGGGAGGAAGAAGAGGAGGAAGAGAAGTCTACTCC AGCAGAAGGCGCAGACACACCCTAAGCGAGAGCAGTGTCTTCTGAGAGTGTGAGCAGCATGACATCCGGA TCCTGAAGCAGCAACTGGAGAGGAGCACCCAAAGCCGCCGGAAGATACCGCTCTGACTCGGAGTCCCT GGAGAGCACCTGGGACATGTGGAACGAGAGGCTGGTGGAGATCGAGAAGGAGGCTGCCCGGAAGTACCGC



[View online >](#)

TCCAAGAGCAAGAGGGAGGAGCTGGATGGCGATTGTTTCAGAGGCAGGGGGCAGGGTCCGAGAGGACGATG
 AGGAGAGCGTGTGTCTGAGGCCAGCTCCTTCTACAACCTCTGCAGTAGGAACAAGGACAAGCTCACTCC
 CCTGGAAGGTGGAAGATTAAGAGAATCCAATTTGGGTTTCAACAAGAAAGACTCGGAGGCGGGAGACGGG
 GGCAGTGAGCATGGTACAGAAGAGGCAGCAGCAGGAGAGAAGAACCTCTCTGATGTCAACCTGACAGCCT
 ACCAGGCCTGGAAGCTGAAGCACCAGAAAAAGGTGGGGAGTGAGAACAAGGAGGAAGTGGTTGAGATGAG
 CAAAGGAGAAGACACGGTCTTGGCTAAGAAGAGACAGCGGAGACTAGAGTTACTGGAGAGGAGCAGGCAG
 ACACTGGAGGAGAGTCAGTCCATGGGAAGCTGGGAGGCAGACAGCTCAACAGCCAGCAGGAGCATCCCC
 TGTCTGCATTCTCGTCCGCGGCCCTTCTGTCAAGTGGGACACTGCGTCACTACTCAGCACCCCA
 GAGCCACCGTTTCTCATGCAAGTAACATGCCCGCCACCCCTGCCTAACCTGCCGGTGGGGCCTGGAGAC
 ACCATTTCCATTGCCAGTATCCAGAACTGGATTGCCAATGTCGTCAATGAAACCTCGCCAGAAGCAAA
 ACGAAATGCTCTTGTGTCCCGCCACCCTCTGTTGCAAGCATGAAGGCAGCTCCAGCAGCCTGCGGCCCT
 TGGGGGGGATGACCAGCTCTCCGTGCTCAGCACCTCCCTGAGTGGCTGCTTACCACCTCCAAGCCAAGG
 AGACCCAGCTCCGACGTGCAGTCTGTGCTCCTCCACCAGCTCGCTGACCTCCAGGGCTGAAGGCAGTG
 GGAACAAAGTGAAGGGGACCAGCAAGCCATCTACAGCCTCTTTGCTGACAACGTGGACCTGAAGGAGCT
 TGGCCGGAAGGAGAAAGAGATGCAAATGGAGCTGCAGGAGAAGATGTCCGAGTATAAATGGAGAAGCTG
 GCCTCTGATAACAAGCGTAGCTCTCTTCAAGAAGAAGAAGGCCAAGGATGACGAGGACATGAGCGTGG
 GTGACAGAGACGAGGACACAGACAGTGCATCGGAAGCTTCCGGTACTCCTCTCGCAGTAATTTCCAGAA
 GCCGGAGACAGATGCCTCCTTCTCTGGCCATCTCTGATCACTATAGAAATGGCCGAGCATGGGTAAC
 GAGATGGATAGCAATATTAATACGTGGCTCAGTGGCCTCAGGATGGAAGAAAAATCTCCTCCTCAAAGTG
 ATGGTCCGGAAGTTCAGGGGGAGGTATACCAGGTCTTCTCTGCTCCGGGAAACAGAGTCTAAATCCTG
 CAGTTACAAGTTCTCAAATCTAGGTACAGGAGCAGGACACCTCCTCCACGAAGCCAATGGTGACACT
 GTGCGAAACACCTCACGGTCTCATCTTCCACCACCAAGGAGGCCAGAGAGATGCACAAGTTCTCTCGGT
 CCACATTCAGCGAGACCTCGAGCTCCCGAGAGGAGAGGCCAGAACCTATTTCTTCCGCGGACCCCTGA
 ACCCTCTGATGGGGAGGAGTCCCAGAGCCAAGGCGTCCAAACTGGACCAGGCCAGGGACTGGGAAGAT
 GTAGAAGAGTCATCTAAATCAGACTTCGCTGAGTTTGGGGCCAAGAGGAAATTCACCCAGAGCTTCATGA
 GGTCTGAAGAGGAGGGAGAGAAGGAGAGGACAGAAAACCGAGAGGAAGGGAGGTTTGCATCTGGGCGTCA
 GTCCAGTATCGGAGAAGCACAACCAGCAAGAGGAAGAAGAAATGGATGATGAAGCCATCATTGCCGCC
 TGGAGAAAGCGGCAAGAGGAAACCAAGAACCAACTGCAAAGGAGGAGGGAGGAC

ACGCGTACGCGGCCGCTCGAGCAGAACTCATCTCAGAAGAGGATCTGGCAGCAATGATATCCTGGATT
 ACAAGGATGACGACGATAAGGTTTAA

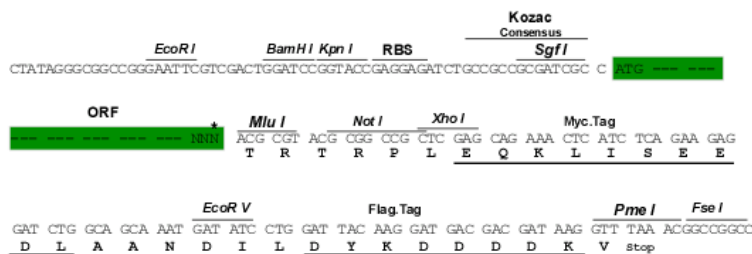
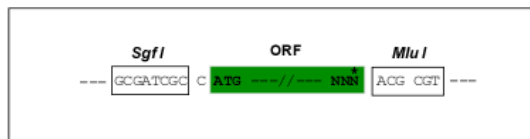
Protein Sequence: >MR217222 protein sequence
 Red=Cloning site Green=Tags(s)

MATGGDAEEEEQVVPNEEDEADVRAVQARYLRSPSPSQYSVVSEAEETESIFMEPIHLSSAVAAKQIINEEL
 KPRGLRTDTECPGMLSEAEQLLVEDLYNRVREKMDDRSLFNTPCVLDLQRALTQDRQEAPRNEVDEVWPN
 VFIAEKSVAVNKGRLKRLGITHILNAAHGTGVYTGSEFYTGLEIQYL GVEVDDFPEVDISQHFRAAEFL
 DEALLTYRGKVLVSSEMGISRSVAVLVAYLMI FHSMAILEALMTVRRKRAIYPNDGFLKQLRELNEKLME
 EREEEDGEEESEEDAGSMLGARVNSLMVEEEDDATSHLSGSSLGKASQVSKPVTLLIDDEEEEEKLYEEWR
 KGQGFPGKEAAQGRKGRSCSMSSAQDGDCEDEDVERIIQEWSRNERYQAKGREQWNREEEEEENSYS
 SRRRRHTLSESSASESVSSHDIRILKQQLERSTQSRGRYRSDSESSESTWDMWNERLVEIEKAARKYR
 SKSKREELDGDCSEAGGRVREDDEESVLSASSFYNFCSRNDKLTPLERWKIKRIQFGFHKKDSEAGDG
 GSEHGTEEAAGEKNLSDVNLTA YQAWLKHQKVGSENKEEVEMSKGEDTVLAKKRQRRELLERSRQ
 TLEESQSMGSWEADSSTASRSIPLSAFSSAAPSVSADGDTASVLSQSHRSHASNMPATPLPNLPVGP
 TISIASIQNWIANVVNETLAQKQNEMLLLSRPPSVASMKAAPACGLGGDDQLSVLSTSLSGCLPPPSQ
 RPSSDVQSVLSSTSSLTSRAEGSGNKVRGTSKPIYSLFADNVDLKELGRKEKEMQMELEKEMSEYKMEKL
 ASDNKRSSLFKKKKAKDDEDMVSGDRDEDTDSAIGSFRYSRSNSQKPETDASSSLAISDHYRNGRSMGN
 EMDSNINTWLSGLRMEEKSPQSDWGSRRGRYTRSSLLRETESKSCSYKFSKRSRQEQDTSFHEANGDT
 VRNTSRFSSSTTKEAREMHKFSRSTFSETSSSREESPEPYFFRRTPEPSDGEESPEPRRNWTRPRD
 WEVEESSKSDFAEFGAKRKFQSFMRSEEEGEKERTENREEGRFASGRQSQYRRSTNQEEEEEMDEAIIAA
 WRKRQEETRTKLQRRRED

TRTRPLEQKLISEEDLAANDILDYKDDDDKV

Restriction Sites: Sgfl-MluI
 Cloning Scheme:

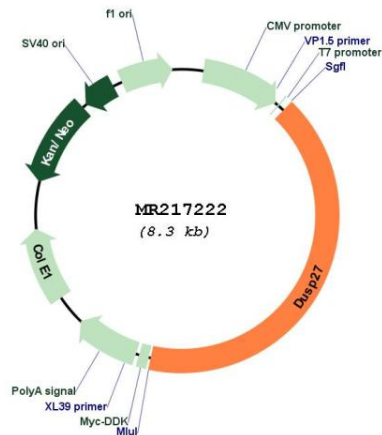
Cloning sites used for ORF Shuttling:



* The last codon before the Stop codon of the ORF

ACCN: NM_001033344
 ORF Size: 3417 bp

OTI Disclaimer:	The molecular sequence of this clone aligns with the gene accession number as a point of reference only. However, individual transcript sequences of the same gene can differ through naturally occurring variations (e.g. polymorphisms), each with its own valid existence. This clone is substantially in agreement with the reference, but a complete review of all prevailing variants is recommended prior to use. More info
OTI Annotation:	This clone was engineered to express the complete ORF with an expression tag. Expression varies depending on the nature of the gene.
Components:	The ORF clone is ion-exchange column purified and shipped in a 2D barcoded Matrix tube containing 10ug of transfection-ready, dried plasmid DNA (reconstitute with 100 ul of water).
Reconstitution Method:	<ol style="list-style-type: none"> 1. Centrifuge at 5,000xg for 5min. 2. Carefully open the tube and add 100ul of sterile water to dissolve the DNA. 3. Close the tube and incubate for 10 minutes at room temperature. 4. Briefly vortex the tube and then do a quick spin (less than 5000xg) to concentrate the liquid at the bottom. 5. Store the suspended plasmid at -20°C. The DNA is stable for at least one year from date of shipping when stored at -20°C.
RefSeq:	<u>NM_001033344.3, NP_001028516.2</u>
RefSeq Size:	4042 bp
RefSeq ORF:	3417 bp
Locus ID:	240892
UniProt ID:	<u>Q148W8</u>
Cytogenetics:	1 H2.3
MW:	128.6 kDa
Gene Summary:	May be required for myofiber maturation.[UniProtKB/Swiss-Prot Function]

Product images:


Circular map for MR217222