

## Product datasheet for **MR217187**

### **Pdxdc1 (NM\_001039533) Mouse Tagged ORF Clone**

#### **Product data:**

Product Type:	Expression Plasmids
Product Name:	Pdxdc1 (NM_001039533) Mouse Tagged ORF Clone
Tag:	Myc-DDK
Symbol:	Pdxdc1
Synonyms:	2210010A19Rik; AA415817; Kiaa0251-hp
Mammalian Cell Selection:	Neomycin
Vector:	pCMV6-Entry (PS100001)
E. coli Selection:	Kanamycin (25 ug/mL)



[View online »](#)

**ORF Nucleotide Sequence:**

>MR217187 representing NM\_001039533  
 Red=Cloning site Blue=ORF Green=Tags(s)

TTTTGTAATACGACTCACTATAGGGCGGCCGGGAATTCGTCGACTGGATCCGGTACCGAGGAGATCTGCC  
 GCC**CGGATCGCC**

ATGGACGCGTCCCTGGAGAAGATAGCAGACCCTACATTAGCTGAAATGGGAAAAAATTGAAAGAGGCGA  
 TGGCGATGCTGGAGAAGAGCCCGAGAAGAACAGAGGAGGAAAAATGGAAAAGCCAGTATCTGAGGATAT  
 TCCAGGGCCACTCCAAGGCAGTGGACAAGATATGGTGAGCATCCTCCAGTTAGTTCAAAACTGTATGCAT  
 GGAGATGAAGATGAGGAGCCCCAGAGCACCCGAATCCAAAATATTGGAGAGCAAGGTACATGGCTTTGT  
 TGGGTCATAGCCTCGGTGCCTATATTTCAACTCTGGATAAAGAGAAGCTGAGAAAAGCTCACACCAGGAT  
 ACTTTCCAGACTACCTTATGGCTACGCCGGATTTTCAGGTACGAAAATGGATGTGCATATTTCCACGAG  
 GAAGAGAGGGAAGGACTTGCTAAGATCTGTAGGCTTGCCATTCTCGCTATGAAGACTTTGTTGTAG  
 ATGGATTCAACGTGTTATATAACAAAAAGCCTGTCATATATCTTAGTGCTGCCGTAGACCTGGCCTGGG  
 CCAATACCTTTGTAATCAGCTTGGCTTACCCTTCCCCTGCCTGTGCCGTGTGCCCTGTAACACTATGTTT  
 GGATCCAGCATCAGATGGACGTTGCCTTTCTCGAGAACTGATCAAAGATGACGTAGAAAAGAGGAAGAC  
 TGCCCTTGCTGCTTGTGCAAAATGCTGGAAGTGCAGCAGTTGGACACACAGACAAGATTGGACGTTTGAA  
 GAACTCTGTGAGCAGTACGGCATTGGCTTATGTGGAAGGTGTGAATCTGGCAACATTGGCTCTAGGT  
 TATGTCTCCTCATCTGTGCTGGCTGCAACCAAGTGCATAGCATGACACTAACTCCTGGCCTATGGCTAG  
 GTTTGCCAGCTGTTCTCGAGTGACACTCTACAAACATGACGATCCTGCCTTGACACTAGTTGCTGGTCT  
 TACATCAAATAAGCCTGCAGACAACTCCGAGCCCTACCACTCTGGTTGTCTCTACAGTACTTGGGACTT  
 GATGGCATTGTGGAGAGAATAAAGCATGCTTGTATCTGAGTCAACGGTTGCAAGAAAGTTTGAAGAAAG  
 TGGACCATCAAATCTTGGTGAAGATGAGCTCAGTCTCCAGTAGTGGTGTTCAGGTTTTCCAGGA  
 ATTACCAGCCTCAGATTCAGCGTTTAAAGCTGTTCTGTATCCAACATAGCACCTGCAGCAGTTGGCCGG  
 GAAAGACTCCTGTGATGCACTGAACCGCTGGTTGGGTGAACAGTTGAAACAGTTGGTGCCTCAGTGTG  
 GCCTCACTGTCATAGACCTGGAGGTAGATGGCACATGTGTTTCGGTTTCAGCCCTCTGATGACAGCAGAAGG  
 GTTAGGAACTCGAGGAGAGGATGTCGATCAGCTCATTACCTGCATCCAAGCAAACCTACCAGTCTGACC  
 TGCACACTACAGCTTCGGGAAGAATTCAAGCAGGAGGTAGAGGGGACAGCAGGGCTCCTGTATGTTGATG  
 ACCCAAACCTGGCCTGGAATCGGGGTTGTCAGGTATGAGCATGCGAATGATGATGACACCAGTTTGAATC  
 TGATCCAGAGGGGGAAAAATACACACTGGACTTCTGAAAAAGTTAAATGAACTGGAATCTGACCTCACA  
 TTTAAAATAGGCCCTGAGTACAAAAGCATGAAGAGCTGCATTTACATTGGCATGGCAAGTATGATGTGG  
 ACGTTTCTGAGCTAGTGGAGACCATTGCAGTACAGCCCGGAAATTGAGGAGAACTCAAGGCTTCTAGA  
 GAACATGACAGAAGTTGTTTCGGAAGGGAATTCAGGAGGCACAGTTTCAGTACAGAAGGCAAATGAGGAG  
 CGGCTTCTGGAAGAGGAGTGTGCGGCAAATCCCTGTAGTAGGATCCGTGCTGAATTGGTTTTCTCCAG  
 TCCAGGCTTACAGAAGGGAAGAAGTTTAACTTAACAGCAGGCTCTCTGGAGTCCACAGAATACACCTA  
 TGTCCACAAAGTACAAGTACTGGGGTGACACCACCTCCCACACCCCTAGGCACTCGAAGCAAACAGAGG  
 CTTCCAGATGGGAACCGGTTGCAGAGACT

AG**CGGACCG**ACGCGTACGCGCCGCTCGAGCAGAACTCATCTCAGAAGAGGATCTGGCAGCAAATGATATCC  
 TGGATTACAAGGATGACGACGATAAGGTTTAA

**Protein Sequence:** >MR217187 representing NM\_001039533  
Red=Cloning site Green=Tags(s)

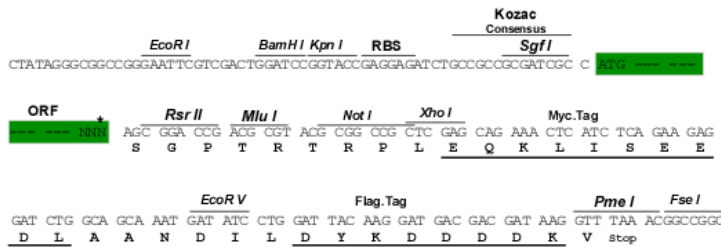
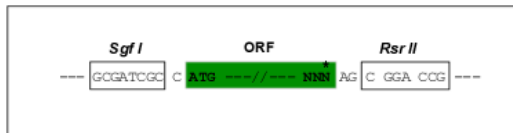
```
MDASLEKIADPTLAEMGKNLKEAMRMLEKSPRRTTEEENGKKPVSEIPGPLQSGQDMVSILQLVQNLMMH
GDEDEEPQSTRIQNIQEIGHMALLGHSLGAYISTLDKEKLRKLTTRILSDTTLWLRRIFRYENGCA YFHE
EEREGLAKICRLAIHSRYEDFVVDGFNVLNKKPVIYL SAAARPGLGQYLCNQLGLPFPCLCRVPCNTMF
GSQHQMDVAFLEKLIKDDVERGRPLLLLVANAGTAAVGHDKIGRLKELCEQYGIWLHVEGVNLATLALG
YVSSVLAATKCDSMTLTPGLWGLPAVPAVTLYKHDDPALTLVAGLTSNKPADKLRALPLWLSLQYLGL
DGIVERIKHACHLSQRLQESLKKVDHIKILVEDELSPPVVFRRFFQELPASDSAFKAVPVSNIAPAAVGR
ERHSCDALNRWLGELKQLVPQCGLTVIDLVDGTCVRF SPLMTAEGLTRGEDVDQLITCIQSKLPVLT
CTLQLEEFKQVEGTAGLLYVDDPNWPGIGVVRYEHANDDDTSLKSDPEGEKIHTGLLKKLNEESDLT
FKIGPEYKSMKSCIYIGMASDDVDVSELVETIAVTAREIEENSRLLENMTEVVRKGIQEAQVQLQKANE
RLLLEGLVRQIPVVGSVLNWVSPVQASQKGRSFNL TAGSLESTEYTYVHKVQGTGVT PPTPLGTRSKQR
LPDGNQGAET
```

SGPTRRRLEQKLI SEEDLAANDILDYKDDDDKV

**Restriction Sites:** SgfI-RsrII

**Cloning Scheme:**

Cloning sites used for ORF Shuttling:



\* The last codon before the Stop codon of the ORF

**ACCN:** NM\_001039533

**ORF Size:** 2130 bp

**OTI Disclaimer:** The molecular sequence of this clone aligns with the gene accession number as a point of reference only. However, individual transcript sequences of the same gene can differ through naturally occurring variations (e.g. polymorphisms), each with its own valid existence. This clone is substantially in agreement with the reference, but a complete review of all prevailing variants is recommended prior to use. [More info](#)

**OTI Annotation:** This clone was engineered to express the complete ORF with an expression tag. Expression varies depending on the nature of the gene.

**Components:** The ORF clone is ion-exchange column purified and shipped in a 2D barcoded Matrix tube containing 10ug of transfection-ready, dried plasmid DNA (reconstitute with 100 ul of water).

**Reconstitution Method:**

1. Centrifuge at 5,000xg for 5min.
2. Carefully open the tube and add 100ul of sterile water to dissolve the DNA.
3. Close the tube and incubate for 10 minutes at room temperature.
4. Briefly vortex the tube and then do a quick spin (less than 5000xg) to concentrate the liquid at the bottom.
5. Store the suspended plasmid at -20°C. The DNA is stable for at least one year from date of shipping when stored at -20°C.

**RefSeq:** [NM\\_001039533.2](#)

**RefSeq Size:** 3224 bp

**RefSeq ORF:** 2133 bp

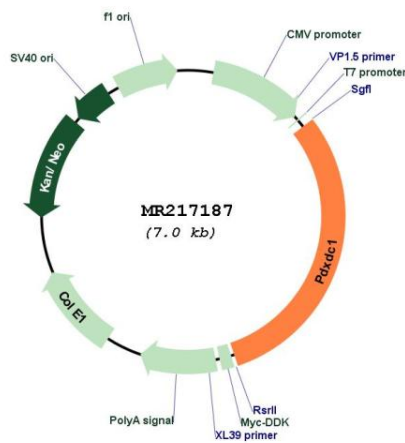
**Locus ID:** 94184

**UniProt ID:** [Q99K01](#)

**Cytogenetics:** 16 A1

**MW:** 79 kDa

**Product images:**



Circular map for MR217187