

## Product datasheet for MR217164

### Stx11 (NM\_001163590) Mouse Tagged ORF Clone

#### Product data:

**Product Type:** Expression Plasmids  
**Product Name:** Stx11 (NM\_001163590) Mouse Tagged ORF Clone  
**Tag:** Myc-DDK  
**Symbol:** Stx11  
**Synonyms:** 5830405C08Rik  
**Mammalian Cell Selection:** Neomycin  
**Vector:** pCMV6-Entry (PS100001)  
**E. coli Selection:** Kanamycin (25 ug/mL)  
**ORF Nucleotide Sequence:** >MR217164 representing NM\_001163590  
Red=Cloning site Blue=ORF Green=Tags(s)

TTTTGTAATACGACTCACTATAGGGCGCCGGGAATTCGTCGACTGGATCCGGTACCGAGGAGATCTGCC  
GCC**CGGATCGCC**

ATGAAGGATCGGCTTGCAGAGCTTCAAGAATTGTCCAGGAGCTATGACCAGCAATCCCAGATGGGGACA  
ATGACTTTGACGCTCCTCGGGAGGACATAGTGTTTCGAGACCGACCACATCCTGGAGTCTTGTACAGGGT  
CATCCAGGACATCCAGGATGAAAACCAGCTGCTTCTGATAGACGTGAGGCGCCTGGGGAGGCAGAACGTC  
CGCTTCTCACGTCCATGCGGCGCCTCAGCAGCATTAAAGCGCGACACCAACTCCATCGCCAAGGCCATCA  
AGACCCGAGGCGAAGGCATCCACCAGAAGCTGCGCTCCATGAAGGAGCTGAGCGAGCAGGCCGAGGCCCG  
GCACGGCGCGCACTCGGGGTTGGCTCGCATCTCACACGCGCAGTACAGCGCGCTGGCCCGCGCTTTCCAG  
CAAGCCATGTACGAGTACAACCAGGCCGAGATGAAACAGCGCGACAACCTGCAAGATCCGCATCCAGCGGC  
AGCTGGAGATCATGGGAAGGACATGTCCGGCGAGCAGATTGAGGACATGTTTCGAGCAGGGCAAGTGGGA  
TGATTCTCCGAGAACCTGCTGGCCGACTTGAAGGGCGCGGGCTGCGCTCAACGAGATCGAGAGCCGC  
CACCGGAGCTCCTGCGCCTGGAGGGTTCGATTCGCGATGTGCACGAGCTTCTTACAGATGGCCGTGC  
TAGTGGAGAAGCAGGAGGACACGCTGAACGTATCGAGCTAACGTGCAGAAGACCCTCGATTACACGGG  
CGAGGCCAAGGCGCAGGTGCGCAAGGCGGTGCAGTACAAGAAGAAGAACCCTGCAGGACCATCTGCTGC  
TTCTGTTGTCCCTGTGTCAAC

**ACGCGT**ACGCGGCCGCTCGAGCAGAAACTCATCTCAGAAGAGGATCTGGCAGCAAATGATATCCTGGATT  
ACAAGGATGACGACGATAAGGTTTAA



[View online »](#)

**Protein Sequence:** >MR217164 representing NM\_001163590  
 Red=Cloning site Green=Tags(s)

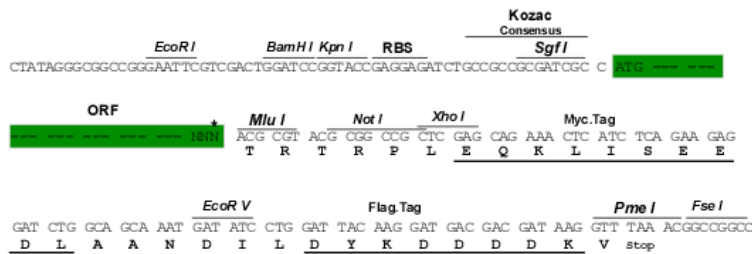
MKDRLAELQELSRSDYDQFPDGDNDFDAPREDIVFETDHIHLESLYRVIQDIQDENQLLLIDVRRLLGRQNV  
 RFLTSMRRLSSIKRDTNSIAKAIKTRGEGIHQKLRSMKELSEQAEARHGHAHSAVARISHAQYSALARAFQ  
 QAMYEYNQAEMKQRDNCKIRIQRQLEIMGKDMSEGEIEMFEQGWDFSENLLADLKGARAALNEIESR  
 HRELLRLEGRIRDVHELFLQMAVLVEKQEDTLNVIELNVQKTLDYTGAKAQVRKAVQYKKNPCRTICCFCCPCVN

TRTRPLEQKLISEEDLAANDILDYKDDDDKV

**Restriction Sites:** SgfI-MluI

**Cloning Scheme:**

Cloning sites used for ORF Shuttling:



\* The last codon before the Stop codon of the ORF

**ACCN:** NM\_001163590

**ORF Size:** 861 bp

**OTI Disclaimer:** The molecular sequence of this clone aligns with the gene accession number as a point of reference only. However, individual transcript sequences of the same gene can differ through naturally occurring variations (e.g. polymorphisms), each with its own valid existence. This clone is substantially in agreement with the reference, but a complete review of all prevailing variants is recommended prior to use. [More info](#)

**OTI Annotation:** This clone was engineered to express the complete ORF with an expression tag. Expression varies depending on the nature of the gene.

**Components:** The ORF clone is ion-exchange column purified and shipped in a 2D barcoded Matrix tube containing 10ug of transfection-ready, dried plasmid DNA (reconstitute with 100 ul of water).

**Reconstitution Method:**

1. Centrifuge at 5,000xg for 5min.
2. Carefully open the tube and add 100ul of sterile water to dissolve the DNA.
3. Close the tube and incubate for 10 minutes at room temperature.
4. Briefly vortex the tube and then do a quick spin (less than 5000xg) to concentrate the liquid at the bottom.
5. Store the suspended plasmid at -20°C. The DNA is stable for at least one year from date of shipping when stored at -20°C.

**RefSeq:** [NM\\_001163590.1](#), [NP\\_001157062.1](#)

**RefSeq Size:** 2261 bp

**RefSeq ORF:** 864 bp

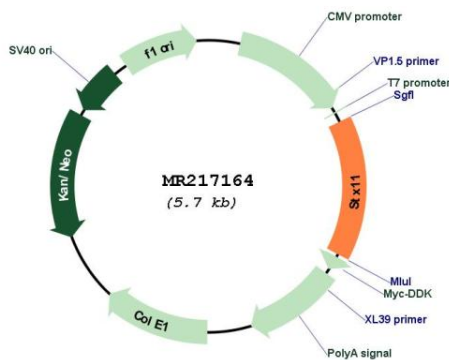
**Locus ID:** 74732

**Cytogenetics:** 10 A2

**MW:** 33.4 kDa

**Gene Summary:** SNARE that acts to regulate protein transport between late endosomes and the trans-Golgi network.[UniProtKB/Swiss-Prot Function]

**Product images:**



Circular map for MR217164