

## Product datasheet for MR217163

### Cox18 (NM\_001163456) Mouse Tagged ORF Clone

#### Product data:

**Product Type:** Expression Plasmids  
**Product Name:** Cox18 (NM\_001163456) Mouse Tagged ORF Clone  
**Tag:** Myc-DDK  
**Symbol:** Cox18  
**Synonyms:** BC038311  
**Mammalian Cell Selection:** Neomycin  
**Vector:** pCMV6-Entry (PS100001)  
**E. coli Selection:** Kanamycin (25 ug/mL)  
**ORF Nucleotide Sequence:** >MR217163 ORF sequence  
Red=Cloning site Blue=ORF Green=Tags(s)

TTTTGTAATACGACTCACTATAGGGCGGCCGGAATTCGTCGACTGGATCCGGTACCGAGGAGATCTGCC  
GCC**CGATCGCC**

ATGCTGTGCCGGTCGTGTGCCGGTGGCTCAGGTCGTCGCCACCCTGCGGCTCCCGGCACCGAGATCAC  
CGCCCGCTGGAGCAGCGCGGCTCCAGCCCTCCGGTATGGGCAGCCGCTTCGGTGTCTGCGGCCTC  
TCCAGGTGGCTGGTATGAGGCCCTGGCAGCGTCGGCGCCGGTGGCACCAGGAGGAAGTGTCTGGGC  
GCGCAGGAGGCTACCGGCTCCCTGGTGGAGCAACATCATACTCAGCACCGTTGCCCTGCGCGGTGCTG  
TCACTCTGCCCTGGCCGCTATCAGCACTACATCCTGGCTAAGGTGAAAACCTGCAACCAGAAATAAA  
AGACATCGCCAAGCGCCTTAACCAAGAAGTTGCAGTCTGTGCCCGTCAGTTTGGATGGTCCAAGAGAGTG  
GCTAGACTCACCTATCTGAAGAATGCGGAGACTTGTCTCAGAGCTGTATGTCCGTGACAACTGCCACC  
CTTTCAAAGCCACGGTGTCTGGTCTGGGTCCAGCTTCCAATGTGGGTTTTTCATCTCTGTGCGCCTCCGGAA  
CCTCAGCACTGGGGCCACACATTCAGACGGCATTTCTGTTAGGAACAGTTAGCTGCTGGCGGGACGCTG  
TGGTTTCTGACCTACCGCAGTGGATTCCACCTGGATTCTGCCTGTCTCTGTTGGTGTGTCAACCTAC  
TGATAGTGGAGATTTTGTCTACAAAAAATTGGGACGCTCGTTTTCAAATGCATGTTACAAATTTTGT  
CCGAGCTGTATCCGTGTTGATGATTCCAGTTGCTGCAACAGTACCCTCGGCGCTTGTCTCTACTGGCTG  
TGCTCCAGCCTCATGGGCTCGCACAGAACCTGCTGCTGCGCTCCCTGGGTTCCGCCAGCTCTGCCGGA  
TACCACCAAGCAAGTCCGACTCAGAGACCCGTACCGAGACCTCTCTGCTGCCTTTTGCGCCAAGTTCCT  
TTCAAGAAAACGA

**ACGCGT**ACGCGGCCGCTCGAGCAGAACTCATCTCAGAAGAGGATCTGGCAGCAAATGATATCCTGGATT  
ACAAGGATGACGACGATAAGGTTTAA



[View online »](#)

**Protein Sequence:** >MR217163 protein sequence  
 Red=Cloning site Green=Tags(s)

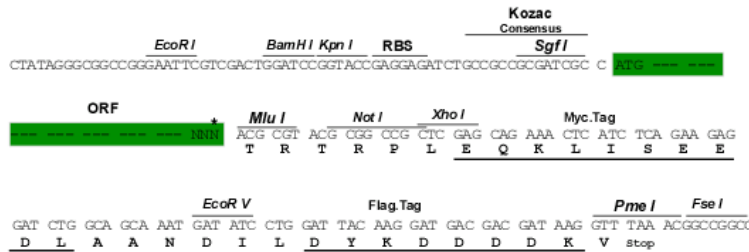
MLCRSCAGWLRSLPTLRLPAPRSPPAWSSARLPALPVWAAASVSAASPGGWYEAL AASAPVRTAEVLLG  
 AQEATGLPWWNSIILSTVALRGAVTLPLAAYQHYILAKVENLQPEIKDIAKRLNQEVAVCARQFGWSKRV  
 ARLTYLKNMRRLVSELYVRDNCHPFKATVLVWVQLPMWVVISVALRNLSTGATHSDGISVQEQLAAGGTL  
 WFPDLTAVDSTWILPVS VGVVNL L IVEIFALQKIGTSRFQMHVTNFVRAVSVLMIPVAATVPSALVLYWL  
 CSSLMGLAQNLLLRSPGFRQLCRIPPSKSDSETPYRDLSAAFCAKFLSRKR

TRTRPLEQKLISEEDLAANDILDYKDDDDKV

**Restriction Sites:** SgfI-MluI

**Cloning Scheme:**

Cloning sites used for ORF Shuttling:



\* The last codon before the Stop codon of the ORF

**ACCN:** NM\_001163456

**ORF Size:** 996 bp

**OTI Disclaimer:** The molecular sequence of this clone aligns with the gene accession number as a point of reference only. However, individual transcript sequences of the same gene can differ through naturally occurring variations (e.g. polymorphisms), each with its own valid existence. This clone is substantially in agreement with the reference, but a complete review of all prevailing variants is recommended prior to use. [More info](#)

**OTI Annotation:** This clone was engineered to express the complete ORF with an expression tag. Expression varies depending on the nature of the gene.

**Components:** The ORF clone is ion-exchange column purified and shipped in a 2D barcoded Matrix tube containing 10ug of transfection-ready, dried plasmid DNA (reconstitute with 100 ul of water).

**Reconstitution Method:**

1. Centrifuge at 5,000xg for 5min.
2. Carefully open the tube and add 100ul of sterile water to dissolve the DNA.
3. Close the tube and incubate for 10 minutes at room temperature.
4. Briefly vortex the tube and then do a quick spin (less than 5000xg) to concentrate the liquid at the bottom.
5. Store the suspended plasmid at -20°C. The DNA is stable for at least one year from date of shipping when stored at -20°C.

**RefSeq:** [NM\\_001163456.1](#), [NP\\_001156928.1](#)

**RefSeq Size:** 1341 bp

**RefSeq ORF:** 999 bp

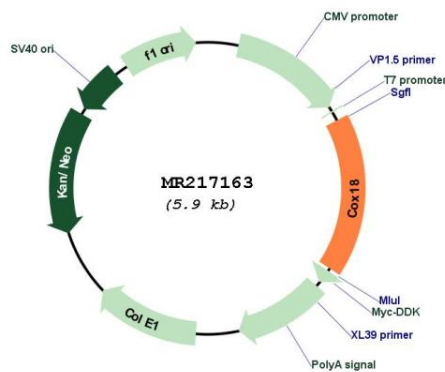
**Locus ID:** 231430

**Cytogenetics:** 5 E1

**MW:** 36.4 kDa

**Gene Summary:** Mitochondrial membrane insertase required for the translocation of the C-terminus of cytochrome c oxidase subunit II (MT-CO2/COX2) across the mitochondrial inner membrane. Plays a role in MT-CO2/COX2 maturation following the COX20-mediated stabilization of newly synthesized MT-CO2/COX2 protein and before the action of the metallochaperones SCO1/2. Essential for the assembly and stability of the mitochondrial respiratory chain complex IV (also known as cytochrome c oxidase).[UniProtKB/Swiss-Prot Function]

### Product images:



Circular map for MR217163