

Product datasheet for MR217083

Schip1 (NM_001113420) Mouse Tagged ORF Clone

Product data:

Product Type: Expression Plasmids
 Product Name: Schip1 (NM_001113420) Mouse Tagged ORF Clone
 Tag: Myc-DDK
 Symbol: Schip1
 Synonyms: Nf2ip; Schip-1
 Mammalian Cell Selection: Neomycin
 Vector: pCMV6-Entry (PS100001)
 E. coli Selection: Kanamycin (25 ug/mL)
 ORF Nucleotide Sequence: >MR217083 representing NM_001113420
 Red=Cloning site Blue=ORF Green=Tags(s)

TTTTGTAATACGACTCACTATAGGGCGGCCGGAATTCGTCGACTGGATCCGGTACCGAGGAGATCTGCC
 GCCCGATCGCC

ATGGAGAGGTCTGAGCAGCGCTAAGGGCCGCTGGGACTGCGACCCAGGCAAGCAAGCTGACAGAGCAC
 AGAAGAATGAGAGAGAGTCTATCAGACAGAAGTTGGCACTCGGAAGCTTCTTTGACGATGGCCAGGAAT
 CTATACCAGCTGCAGAAAAGTGGGAAGCCAAGCCTTTCTGCAAGACTACAGAGCGGGATGAACCTCCAG
 ATATGCTTTGTCAATGACAGCGGCAGTGACAAGGACAGCGATGCAGATGACAGTAAGACGAAAACAGCT
 TGGACACGCCCTTGTCCTCCCATGAGCAAGCAGAGTTCTTCTATTCGGATAGAGACACAAGTGGAGGA
 GTCTGAATCCCTGGATGACATGGACTTCTCACAAGGCAAAAGAAGCTACAAGCTGAAGCCAAAATGGCT
 CTGGCCATGGCCAAACCAATGGCCAAAATGCAAGTAGAAGTGGAAAAACAGAACAGGAAAAAGTCTCCCG
 TCGCTGATCTTCTCCACACATGCCTCACATAAGCGAATGTTTGTGAAAAGAAGCTTAAAGCCACCGA
 CCTGAGAGACATGACTATCGGGCAGCTACAAGTATCGTCAATGACCTCCACTCCAGATTGAAAGTTTG
 AATGAAGAGTTGGTCCAGCTGCTCCTTATTCGAGATGAGCTGCACACAGAACAAGATGCCATGCTGGTGG
 ACATTGAAGACTTGACTAGACACGCTGAGAGTCAGCAGAAGCACATGGCTGAGAAAATGCCCGCGAAG

ACGCGTACGCGGCCGCTCGAGCAGAACTCATCTCAGAAGAGGATCTGGCAGCAAATGATATCCTGGATT
 ACAAGGATGACGACGATAAGGTTTAA



[View online »](#)

Protein Sequence: >MR217083 representing NM_001113420
 Red=Cloning site Green=Tags(s)

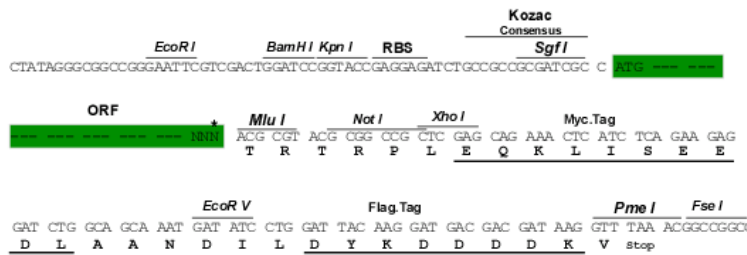
MERSEQRVRAAWDCDPGKQADRAQKNERESIRQKLALGSFFDDGPGIYTSCKSGKPSLSARLQSGMNLQ
 ICFVNDSGSKDSDADDSKTETSLDTPPLSPMSKQSSSYSDRDTTEEESESLDDMDFLTRQKKLQAEAKMA
 LAMAKPMAMQVEVEKQNRKKSVPADLLPHMPHISECLMKRSLKPTDLRDMTIGLQVIVNDLHSQIESL
 NEELVQLLLIRDELHTEQDAMLVDIEDL TRHAESQQKHMAEKMPAK

TRTRPLEQKLISEEDLAANDILDYKDDDDKV

Restriction Sites: SgfI-MluI

Cloning Scheme:

Cloning sites used for ORF Shuttling:



* The last codon before the Stop codon of the ORF

ACCN: NM_001113420

ORF Size: 768 bp

OTI Disclaimer: The molecular sequence of this clone aligns with the gene accession number as a point of reference only. However, individual transcript sequences of the same gene can differ through naturally occurring variations (e.g. polymorphisms), each with its own valid existence. This clone is substantially in agreement with the reference, but a complete review of all prevailing variants is recommended prior to use. [More info](#)

OTI Annotation: This clone was engineered to express the complete ORF with an expression tag. Expression varies depending on the nature of the gene.

Components: The ORF clone is ion-exchange column purified and shipped in a 2D barcoded Matrix tube containing 10ug of transfection-ready, dried plasmid DNA (reconstitute with 100 ul of water).

Reconstitution Method:

1. Centrifuge at 5,000xg for 5min.
2. Carefully open the tube and add 100ul of sterile water to dissolve the DNA.
3. Close the tube and incubate for 10 minutes at room temperature.
4. Briefly vortex the tube and then do a quick spin (less than 5000xg) to concentrate the liquid at the bottom.
5. Store the suspended plasmid at -20°C. The DNA is stable for at least one year from date of shipping when stored at -20°C.

RefSeq: [NM_001113420.1](#), [NP_001106891.1](#)

RefSeq Size: 1535 bp

RefSeq ORF: 771 bp

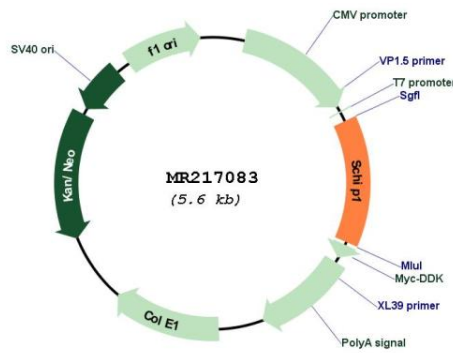
Locus ID: 30953

UniProt ID: [P0DPP4](#)

Cytogenetics: 3 E1

MW: 29.3 kDa

Product images:



Circular map for MR217083