

Product datasheet for MR217078

Kif21a (NM_016705) Mouse Tagged ORF Clone

Product data:

Product Type: Expression Plasmids
Product Name: Kif21a (NM_016705) Mouse Tagged ORF Clone
Tag: Myc-DDK
Symbol: Kif21a
Synonyms: AI850764; mKIAA1708
Vector: pCMV6-Entry (PS100001)
E. coli Selection: Kanamycin (25 ug/mL)
Cell Selection: Neomycin
ORF Nucleotide Sequence: >MR217078 representing NM_016705
 Red=Cloning site Blue=ORF Green=Tags(s)

TTTTGTAATACGACTCACTATAGGGCGGCCGGAATTCGTCGACTGGATCCGGTACCGAGGAGATCTGCC
 GCC**CGATCGCC**

ATGTTGGGCGCTGCGGACGAGAGCTCGGTGCGCGTGGCTGTCAGAATAAGACCACAGCTTGCCAAAGAGA
 AGATCGAAGGTTGCCATATCTGCACGTCAGTCACACCGGGAGAGCCTCAGGTCTTCTCGGAAGGATAA
 GGCTTTACTTTTGATTATGTGTTGACATTGACTCCCAGCAGGAGCAGATCTACACCCAGTGCATCGAA
 AAGCTCATTGAAGGCTGTTTTGAAGGCTACAATGCCACCGTGTTGCCTATGGACAAACCGAGCTGGGA
 AAACCTACACGATGGGAACCGGATTTGACGTGAACATCATGGAGGAAGAGCAGGGCATCATCTCTCGTGC
 TGTTAGACACCTGTTCAAGAGTATTGATGAGAAAAAGACCTCAGCGATTAACCGGGCTGCCCCCTCT
 GAATCAAAGTGAATGCCAGTTCCTAGAGCTCTATAATGAAGAGGTCCTTGACTTGTTTGATACCACTC
 GGGATATTGATGCAAAAAATAAAAAATCAAAATAAAGAATTCATGAAGATCAACTGGAGGAATTTATAC
 TGTGGGCGTCACAACACGCACTGTGAATACAGAACCGGAGATGATGCAGTGTCTGAAGCTGGGCGCTCTC
 TCGCGCACACGCGCCAGCACCCAGATGAACGTACAGAGCTCTCGTTCACACGCCATCTTTACCATTACG
 TGTGTCAAACCAGAGTGTGTCCCAACAGATGCTGAGAACGCAACTGATAAAGCTGATCTCCGAATC
 GTCGCCAATGAATGAGTTTGAGACGCTGACGGCGAAGTTTCACTTTGTTGATCTGGCGGGATCGGAAGA
 CTGAAGAGAACCGGAGCTACAGGCGAGAGAGCAAAAGAGGGCATTTCATCAACTGCGGGCTTTTGCTC
 TTGGGAATGTAATCAGCGCCTTGGGGGACAAGAGCAAGAGAGCCACCCATGTCCCTTACAGAGACTTAA
 GCTGACAAGACTCTTGCAGGATTCCTTGGGGTAACAGCCAAACCATCATGATAGCATGCGTCAGCCCT
 TCAGACAGGGATTTTATGGAGACGTTAAACACTCTGAAGTACGCCAATCGAGCGAGAAATATCAAGAACA
 AGGTGATGGTCAATCAAGACAGAGCCAGTCAGCAAATCAACGCGCTGCGGAGCGAGATCACGCGCCTTCA
 GATGGAGCTCATGAATACAAAACCGTAAAAGAATAATTGACGAGGAAGGCGTGGAAAGCATCAATGAC
 ATGTTTTCATGAGAATGCTATGCTGCAGACGAAAATAAATCTGCGTGAAGAATAAAGCCATGCAGG
 AGACCGTTGATGCACTGAGGGCCAGAATCACGAGCTTGTGAGTGCAGGCAACCAAGTTCTTGCCCG
 AGCAGGTGAAGGGAACGAAGAGATCAGTAATATGATTCATAGTTATATCAAGAAATGAAGACCTCAGG
 GCAAAATTATTAGAAAGTGAAGCAGTGAACGAGAACCTTCGGAAGAACTTGACCAGAGCCACGGCGAGAT



CTCCTTACTTCAGTGCCTCCTCAGCTTTCTCGCCTACTATACTGTCTTCAGACAAGGAGACTATCGAAAT
 TATAGATCTAGCAAAGAAAGACTTGGAGAAGCTAAAACGGAAAGAGAAGAAGAAGAAAGTGTGGC
 GGGAAAGACGATAATGCAGACACTGACCAGGAGAAGAAAGAAAGAAAGGGTGTTCAGAGAAAGAAAACA
 ATGAGCTAGACGTGGAAGAGAATCAAGAAGTGAGTGACCACGAGGATGAGGAAGAGGAGGAAGAGGACGA
 GGAGGAAGAGGATGACATTGAAGGAGAAGAAAGCTCTGATGAATCAGATCCGAATCTGATGAAAAAGCT
 AACTATCAAGCCGACTTAGCAAAATCACCTGCCGAGATTGCGATTAAGCAGAAGCTGATCGACGAACTGG
 AGAACAGCCAGAAACGGCTGCAGACCCTGAAAAAGCAGTACGAGGAGAAGCTGATGCTCCAACATAA
 GATCCGGGACACGCAGCTGGAGAGGGACCAGGTGCTCCAGAACCTAGGCTCGGTGGAGTCATACTCGGAA
 GAAAAGGCCAAGAAAGTGAAGTGCGAATATGAGAAGAAGCTCCACGCCATGAACAAAGAGCTGCAGCGAC
 TGCAGACGGCCAAAAGGAGCACGCCAGGCTCCTCAAAAACAGTCTCAGTATGAAAAGCAGCTCAAGAA
 ACTGCAGCAAGACGTCATGGAATGAAGAAAACCAAGTTCGTCTAATGAAGCAGATGAAAGAAGAGCAG
 GAGAAAGCCCGGCTGACAGAATCTGAAGGAACCCGGAAATCGCTCAGCTGAAGAAGGATCAGCGCAAGC
 GAGATCATCAACTTAGACTTCTAGAGGCCAGAAAAGAAATCAAGAAGTAGTTCTGCGACGCAAAACGGA
 AGAGGTTACAGCTCTCCGACGGCAAGTGAGGCCATGTCTGATAAAGTAGCGGGAAAAGTACTCGGAAG
 CTGAGCTCATCCGAAAGCCCGCTCCGGACACAGGTTCCAGTGGCGCTTCCGGGGAAGCAGACACATCAC
 GGCACAGCACCCAGCAGAAAATGAGGATCCCCGTGGCAAGAGTCCAGGCATTACCAACACCTACAACAAA
 TGGCACAGGAAAAAATATCAGAGGAAAGGATTACTGGCCGGGTGTTCACTTCCAAGACAGCCCGCATG
 AAGTGGCAGCTACTGGAGCGCCGGTGACCGACATCATCATGCAGAAAATGACCATCTCCAACATGGAGG
 CGGACATGAACAGACTCCTCAGGCAACGGGAAGAACTCACAAAAGGCGAGAGAACTTTCTAAAAGGAG
 AGAGAAGATAGTCAAGGAGAGCGGAGAGGGAGATAAAAGTGTGGCTAACATCATCGAGGAGATGGAGTCC
 CTGACAGCCAACATAGATTACATCAATGATAGCATTGCCGACTGTCAAGCCAACATCATGCAGATGGAGG
 AGGCAAAGGAAGAAGGGGAGACATTGGATGTCACCGCTGTCAATTAATGCCTGTACTACTGACAGAAGCTCG
 GTACCTGTAGTCACTTCTGTCAATGGGCATCAATAAGGGTCTGCAGGCTGCCAGAAAAGAGGCTCAA
 ATTAAGTCCCTCGAGGGTGCAGTCAAAACAGACCGAAATCACAGTGAACCCAGAACCAACTCTTATTCC
 ATATGCTGAAGGAGAAGGCAGAGCTAAACCCAGAGCTGGATGCCTTGTAGGCCACGCACTGCAAGAAAA
 CGAGGAGGACAGCAGCGAGGAAGATGGCCCTTTACACAGCCCGGGGTGCGAGGGAAGCACGTTATCTTCA
 GACCTTATGAAGCTTTGTGGTGAAGTGAACCAAGAACAAGGCTCGAAGGAGAACCACCACTCAGATGG
 AGTTGCTGTATGCAGATAGCAGTGAAGTAGCCTCAGACACTAGTGCAGGAGATGCCTCCTGTCTGGCCC
 TCTGGCACCTGTTGCAGAAGGGCAGGAGATTGGAATGAACACAGAGACAAGTGGTACTTCTGCTAGGGAC
 AAAGAGCTTCTTGCCCCATCTGGCTTACCTTCTAAGATAGGCAGCATGTCTGATGAAAGTACTCCTCTT
 TGTCCGAGGTGCACAGAGGCATAATCAACCCATTTCTGCCTGCAAAGGAGTGCAGGCCTCCTCTTCA
 GTGCGTTCACATAGCTGAAGGGCACACCAAGGCTGTGCTGTGTGGATTCTACGGATGATCTTCTCTTC
 ACCGGATCAAAAGATCGCACTTGTAAAAGTATGGAATCTCGTGACTGGACAGGAAATATGTCCCTGGGGG
 TTCACCCTAACACGTGGTGTCTGTAATAACTGTAATTATACCAGTCTGGTCTTACCCTGTGCACATC
 TTATATTAAGGTGTGGGATATCAGAGAGTCAGCAAAATGCATTGCAACATTAACATCTTCAGGTCAAGTT
 ACCCTTGAGAAGCGTGTCTGCCAGCACACCGGACAGTAGCTATTCTTCCGGGGAGAGCCAGATCA
 ATCAAATTGCACTAAACCAACTGGCACTTTCTCTACGCGGCCTCTGGAATGCCGTGAGAATGTGGGA
 CCTTAAAAGGTTTCAGTCTACAGGAAAGCTAACCGGACACCTGGGTCTGTTATGTGCCCTACGGTAGAC
 CAGATCTCAAATGGACAGGACCTCATCATCACTGGCTCAAAAGACCACTACATCAAAATGTTGATGTGA
 CTGAAGGGGCTCTTGAAGTGAAGTCCACCCACAACCTCGAGCCTCCTCATTATGATGGGATAGAAGC
 ACTGGCCATTCAAGGCGATAACCTATTCAGTGGGTCCAGAGATAATGGAATCAAGAAATGGGACTTAGCT
 CAGAAAAGTCTTCTCAGCAAGTCCCAATGCACACAAAGACTGGGTGTGTGCCCTGGGCTGGTCCAG
 GCCATCCGGTTTTGCTGAGTGGCTGCAGAGGGCATTCTGAAACTCTGGAATGTGGACACTTTTGTGCC
 CGTTGGAGAGATGAGAGGTCATGACAGTCCCATCAATGCCATTTGTGTTAACTCCACCCATGTCTTACT
 GCTGCTGATGATGAACCGTGAGAATCTGGAAGGCCACAACCTGCAAGATGGTCAACTCTCTGACACCG
 GCGATCTGGGGAGGATATTGCCAGTAAT

ACGCGTACGCGGCGCTCGAGCAGAAACTCATCTCAGAAGAGGATCTGGCAGCAAATGATATCCTGGATT
 ACAAGGATGACGACGAT AAGGTTTAA

Protein Sequence: >MR217078 representing NM_016705
 Red=Cloning site Green=Tags(s)

```

MLGAADESSVRVAVRIRPQLAKEKIEGCHICTSVTPGEPQVFLGKDKAFTDYVFDIDSQQEQIYTQCIE
KLIEGCFEGYNATVFAYGQTGAGKTYTMGTGFDVNIEMEEQGIISRAVRHLFKSIDEKKTSAIKNGLPPP
EFKVNAQFLELYNEEVLDFDTRRIDAKNKKSNIRIHEDSTGGIYTVGVTRTRVNTPEMMQCLKLGAL
SRTTASTQMNQSSRSHAIFTIHVCQTRVCPQTDANATDNKLI SESSPMNEFETL TAKHFVDLAGSER
LKRTGATGERAKEGISINCGLLALGNVISALGDKSKRATHVPYRDSKLTRLLQDSLGGNSQTIMIACVSP
SDRDFMETLNTLKYANRARNIKNKVMVNDQRASQQINALRSEITRLQMELMYKTKRIIDEEGVESIND
MFHENAMLQTENNLRVRIKAMQETVDALRARITQLVSEQANQVLARAGEGNEEISNMIHSYIKEIEDLR
AKLLESEAVNENLRKNL TRATARSPYFSAASAFSPTILSSDKETIEIIDLAKKDLEKLRKEKSKKSV
GKDDNADTDQEKKEEGVSEKENNELDVEENQEVSDHEDEEEEEDEEEEDDIEGEESSDESDESDEKA
NYQADLANITCEIAIKQKLIDELNSQRLQTLKKQYEEKLMLLQHKIRDQTLERDQVLQNLGSVESYSE
EKAKKVKCEYEKLLHAMNKELQRLQTAQKEHARLLKNQSQYEKQLKKLQDVMEMKTKVRLMKQMKEEQ
EKARL TESRRNREIAQLKKDQRKRHDQLRLL EAQKRNQEVVLRKRTTEVTALRRQVRPMSDKVAGKPTRK
LSSSESPAPDTGSSAASGEADTSRPGTQQMRIIPVARVQALPTPTTNGTRKKYQRKGF TGRVFTSKTARM
KWQLLERRVTDIIMQKMTISNMEADMNRLLRQREELTKRREKLSKRREKIVKESGEGDKSVANIIEMES
LTANIDYINDSIADCQANIMQMEEAKEEGETLDVTAVINACTL TEARYLLDHFLSMGINKGLQAAQKEAQ
IKVLEGRLLKQTEITSATQNQLLFHMLKEKAELNPELDALLGHALQENEDSSEEDGPLHSPGSEGSTLSS
DLMKLCGEVPKPKNKARRRTTQMELLYADSSVASDTSAGDASLSGPLAPVAEQEIGMNTETSGTSARD
KELLAPSGLP SKIGSMSDESSSLSEVHRGIINPFPACKGVRASPLQCVHIAEGHTKAVLCVDSTDDLLF
TGSKDRCTKVWNLVTGQEIMSLGVHPNNVSVKYNYSLSLFTVSTSYIKVWDIRE SAKCIRTLTSSGQV
TLGEACASRTVAIPSGESQINQIALNPTGTFLYAASGNVAVRMWDLKRFQSTGKLTGHLGPVMCLTVD
QISNGQDLIITGSKDHYIKMFDVTEGALGTVSPTHNFEPHYDGEI EALAIQGDNLFSGSRDNGIKKWDLA
QKGLLQQV PNAHKDWVCALGLVP GHPVLLSGCRGGILKLVNVDTFVPV GEMRGHDS PINAICVNSTHVFT
AADRTVRIWKAHNLQDQQLSDTGDLGEDIASN
  
```

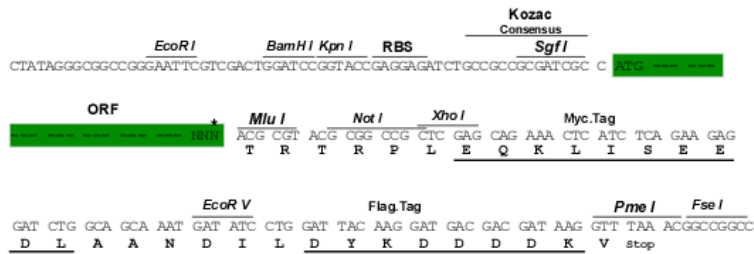
TRTRPLEQKLISEEDLAANDILDYKDDDDKV

Restriction Sites:

SgfI-MluI

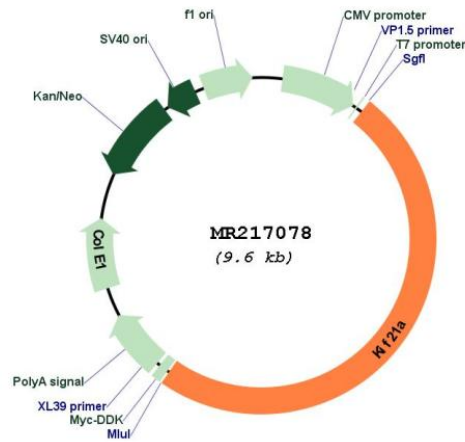
Cloning Scheme:

Cloning sites used for ORF Shuttling:



* The last codon before the Stop codon of the ORF

Plasmid Map:



ACCN: NM_016705

ORF Size: 4719 bp

OTI Disclaimer: The molecular sequence of this clone aligns with the gene accession number as a point of reference only. However, individual transcript sequences of the same gene can differ through naturally occurring variations (e.g. polymorphisms), each with its own valid existence. This clone is substantially in agreement with the reference, but a complete review of all prevailing variants is recommended prior to use. [More info](#)

OTI Annotation: This clone was engineered to express the complete ORF with an expression tag. Expression varies depending on the nature of the gene.

Components: The ORF clone is ion-exchange column purified and shipped in a 2D barcoded Matrix tube containing 10ug of transfection-ready, dried plasmid DNA (reconstitute with 100 ul of water).

Reconstitution Method:

1. Centrifuge at 5,000xg for 5min.
2. Carefully open the tube and add 100ul of sterile water to dissolve the DNA.
3. Close the tube and incubate for 10 minutes at room temperature.
4. Briefly vortex the tube and then do a quick spin (less than 5000xg) to concentrate the liquid at the bottom.
5. Store the suspended plasmid at -20°C. The DNA is stable for at least one year from date of shipping when stored at -20°C.

RefSeq: [NM_016705.4](#), [NP_057914.2](#)

RefSeq Size:	6142 bp
RefSeq ORF:	4722 bp
Locus ID:	16564
UniProt ID:	Q9QXL2
Cytogenetics:	15 45.86 cM
MW:	176 kDa
Gene Summary:	Microtubule-binding motor protein probably involved in neuronal axonal transport. In vitro, has a plus-end directed motor activity.[UniProtKB/Swiss-Prot Function]