

## Product datasheet for MR217026

### Cdk13 (NM\_027118) Mouse Tagged ORF Clone

#### Product data:

Product Type:	Expression Plasmids
Product Name:	Cdk13 (NM_027118) Mouse Tagged ORF Clone
Tag:	Myc-DDK
Symbol:	Cdk13
Synonyms:	2310015O17Rik; Cdc2l5
Vector:	pCMV6-Entry (PS100001)
E. coli Selection:	Kanamycin (25 ug/mL)
Cell Selection:	Neomycin
ORF Nucleotide Sequence:	>MR217026 representing NM_027118 Red=Cloning site Blue=ORF Green=Tags(s)

TTTTGTAATACGACTCACTATAGGGCGCCGGGAATTCGTCGACTGGATCCGGTACCGAGGAGATCTGCC  
GCC**CGGATCGCC**

ATGCCGAGTAGCTCGGACACGGCGCTGGGGGAGGCGGGGCTGAGCTGGGCCGAGAAGAAGTTGGAGG  
AGCGCCGAAGCGGAGGGCATTCTGTCCCTCAGCAGCCGCGCTGCTGTTGCCCTCTGCAGCCGCA  
GCTCCTGCAACCGCCGCCCGCCCGCTCTGCTTCTCTGGTGCCCGGGCGGGCCGCCCGCA  
GCCGCGCGCCGCCGCGCTCCTCTCTTCTTCTAGCCCGGGCCCTCTCTGGAGGTCAAGCGGCTGGCGA  
GAGGCAAGAGGGCGCCCGGAGGGCGGCAGAAGCGGCGCCGCGGGCCCGCCCGGGCAGGAGGCGGAGAA  
GCGCCGGGTCTTCTCGTGCAGCCAGCCGAGCAGGACGGCGGTGGCGGTGCCAGTAGCGCGGGGTGTG  
ACCCCGCTGGTGGAGTACGAGGATGTGAGCTCCAGTCCGAGCAGGGGCTGCTGCTGGGGGCGCCAGCG  
CGGCAACGGCGGGCAGCGCTGCCGGGGAAACGGGGGCAACGGCGGGAGTCCGGCCTCCTCTCCGGCAC  
GCAGAGGCGCGCGGAGGGGTGGAGCGCAGGCCGCGCGGGACC GCCGAGCAGCAGCGGCCGAGCAAG  
GAGCGCCACCGCAGCACCGGCGGGGACGGGACGCGCAGCGGAGGCGCTCAAAGGCCCGCAGCC  
GCCACGGACACAGCGGCGAGGAGCGGGGAGGCGGAGGCCCAAGAGCGGCAGCAGCAGCAGCGGGCGCG  
CCGCAAGAGCGCGTCCGGTACGTCCAGCAGCAGTAGCAGCCGCAAGGACCGGGACCTCAAGGCCACCCGC  
AGCCGGACTAAGTCGTCCAAGGAACCGCCTCGGCCTACAAGGAGCCGCCAAGGCTACCGGGAGGACA  
AGAGCGAGCCGAAGGCTACAGGCGGGCAGCGGTCCCTGAGCCGCTGGGAGGCCGGGACGAAAGCCC  
GGTGTCCACAGGGCCTCGCAGACCTTCGGAGCCGCAAGTCCCCAGTCCGGCGGGAGGTGGCAGCAGT  
CCTTATCCCGCGGCTGCCGCTCCCGAGCCCTATAGCCGGCGCGCTCGCCAGCTACAGCCGCC  
ACAGCTCTACGAGCGGGCGGGCAGTATCCCCAGCCGACAGCAGCAGCAGCTGGCGGCGCTCGG  
CAGCCCTACAGCCAGTACTCAGACGATCTGCCAAATCCGAAGCAGAAGCCATATTCATCTAGGCAC  
TCAAGATCTCGGAGCAGGCACAGATTGTCTAGATCAAGAAGTCGTCATTCAAGCATTCTCTAGCACAC  
TAACTCTGAAGAGTAGCTTGGCAGCTGAATTGAACAAGAATAAAAAGGCAGGAGCTGCAGAGGCAGCAAG  
AGCTGCAGAGGCAGAAAAGCTGCAGAAGCTGCTAAGGCTGCTGAAGCAGCTGCCAAAGCTGCCAAAGCC  
TCAAATGCTTCTACACCTACCAAGGGAACACAGAAACTGGTGCCAGTGTCTCACAGACAAACCATGTGA



[View online »](#)

AGGAAGTCAAAAACTTAAACTGAGCATGCACCTTCTCCTTCAAGTGGTGGGACCGTCAAAAGCGACAA  
AGCAAAAACAAAGCCACCGCTTCAAGTAACAAAGGTAGACAATAATTTGACAGTAGAGAAAGCCACCAAG  
AAAACAGTTGTTGGGAAGGAGAGTAAACCTGCTGCTACAAAGGAAGAACCAGTTTCCACTAAAGAGAAAA  
GCAAGCCACTCACACCAAGCACAGGAGCAAGGAGAAGGAGCAGCATGTGGCTTATAGTACCTCTACGTT  
ACCGCCATTACCTTTGCCTCCCATGCTGCCTGAAGATAAAGATGCTGATAGCTTAAAGAGGCAACATTTCT  
GTCAAAGCAGTTAAAAAGAAGTAGAAAAGAACTCCGATGTCTGCTTGTGATTACCATTGCCCCCTG  
AGTTACCAGGAGAGATGATCTTTCCAAGAGTCCAGAGGAGAAGAAAACAGCAGCACAGTTACATAGCAA  
ACGAAGGCCTAAAAATATGTGGCCCTCGCTATGGTGAAATCAAAGAAAAAGATATTGACTGGGGAAACGC  
TGCGTGGATAAATTTGATATCATCGGAATTATTGGAGAAGGTAATTATGGACAAGTTTACAAAGCCAGGG  
ACAAAGACACGGGAGAAATGGTAGCCTTAAAGAAAGTACGTCTGGATAATGAAAAGGAGGGTTTCCCAAT  
TACAGCAATTAGAGAAATTTAAATTTCTTCGGCACTCACCCACCAGAGTATCATCAATATGAAGGAAATC  
GTGACTGATAAAGAAGATGCTTTGGATTTTAAAGAAAGACAAAGGTGCATTTTACCTGGTGTGTAATATA  
TGGACCATGATCTGATGGGACTGCTGGAATCAGGCTTGGTTCATTTTAAAGAAACCATATAAAATCTTT  
TATGAGACAGCTCATGGAAGGCCTGGATTATTGCATAAGAAGAACTTTTGCATAGAGATATTAATGT  
TCAAATATCCTTCTAAATAATAGAGGACAGATAAAACTTGCAGATTTTGGACTTGTCTGTTTATATAGCT  
CAGAAGAAAGTCGCCATATACTAACAAGGTCATTACTTTGTGGTATCGTCCACCTGAATTGCTCTTGGG  
AGAAGAACGATATACACCAGCCATTGATGTATGGAGCTGTGGATGTATCCTTGGTGAACCTTCACTAAA  
AAACCTATATTTCAAGCAAACCGAGAACTTGCACAGCTAGAGCTAATAAGCCGTATATGTGGGAGTCCAT  
GTCCTGCAGTGTGGCCTGATGTAATCAAAGTCCATATTTCAACACCATGAAACCAAAGAAGCAATATCG  
GCGGAAGTTAAGAGAAGAATTTGTTTTTCATCCCGCAGCTGCACTCGACTTATTCGATTACATGCTTGCC  
TTGGATCCCAGTAAGCGCTGCACTGCTGAGCAGGCTCTCAGTGTGAGTTCCTGCGAGACGTGGAACCT  
CCAAAAATGCCTCCACCAGACCTTCTTTTGTGGCAAGATTGTCATGAATTATGGAGTAAAAAGAGAAGAAG  
ACAGAAACAGATGGGCATGACTGATGATCTTTCCACAATCAAAGCCCCTAGGAAGGACCTGCTCTGGGC  
TTAGATGACAGCAGAACTAACACACCCAGGGTGTGCTGCCACCCGACAGTTGAAATCTCAGAGCAACT  
CAAATGTAGCACCTGGTAAAAACAGACAGATCCATCAACACCACAACAGGAGTCTTCAAATCATTGGG  
AGGAGTTCAGCCTTACAGACCATCCAGCCTAAAGTGGAACTGATGCTGCCAGGCTGCTGTGCAGAGT  
GCATTTGCAGTCTCTTACTCAGTTAATAAAGGCCAACAGTCCAAACAGAAAGATGCCATGCTAGAGG  
AAAGGGAAAAATGGATCAGGACATGAAGCTCCATTGCAACTCAGGCCTCCTCTAGAACCGGACACTCCTGG  
ATCCGGGCAAGATGACCTCATCCAGCACCAGAGGAGGATATTGGAGCTGACACCAGAACCCAGACCGG  
CCTCGAATTCTGCCTCCTGATCAACGGCCTCCTGAACCTCCTGAACCACCACAGTACTGAGGAGGACC  
TAGATTATCGGACAGAAAACAGCATGTTCTTACCCTAGTCTTCTTCAATTAAGTACCACATGCTGGAGT  
GAAGGCAGCCCTTACAGCTGCTTGTGATCAGCATCAGCCAGGATGATCCAAAAAGAGAAGGTGGTATC  
GATTATCCACAGGAGACACATATGTGCCAGTTCAGACTATAAGGACAACCTTTGGATCTTCTTTCTCTG  
CCGCTCCTTACGTTAGCAGTGTGGTCTAGGAAGTAGCTCCGCTGCTGCACCATTTGGAAGCACGTAGTTT  
CATTGGAAACTCAGATATTCAGTCTCTGGATAACTACAGTACTGCTTCACTCACACTGGTGGTCCACCT  
CAAACCTTCTGCCTTACTGAGTCGTTTGGCAGTTCAGTAGCTGGATATGGAGACATTTACCTCAATGCTG  
GTCCCATGTTGTTTGTAGTGGAGACAAGGACCATAGATTTGAATATAGCCATGGTCTATCACAGTCCCTCAC  
AAACAGCAATGACCTTCCACAGGGCCAGAGAGTACTCATCCCTTGCAGCAAAGATGCACAACATAAC  
TATGGTGGTAACTTACAGGAAAAATCCAGGTGGCCCTAGCCTCATGCATGGACAGACCTGGACTTCTCCTG  
CCCAAGGACCTGGATATTCAAGGATACAGGGGACACATTAGCACATCAGCTGGCAGAGGTCGAGGCGAG  
AGGGTTACCATAC

ACGCGTACGCGGCCGCTCGAGCAGAACTCATCTCAGAAGAGGATCTGGCAGCAAATGATATCCTGGATT  
ACAAGGATGACGACGATAAGGTTTAA

Protein Sequence: >MR217026 representing NM\_027118  
 Red=Cloning site Green=Tags(s)

MPSSSDTALGGGGGLSWAEKKLEERRKRRRFLSPQQPPLLLPLLQPQLLQPPPPPPPLFLAAPGAAAAA  
 AAAAAASSSCFSPGPPELVKRLARGKRRPGGRQKRRRGPRAGQEAERKRVFSLPQPQQDGGGGASSGGGV  
 TPLVEYEDVSSQSEQLLLGGASAATAAAGGTGGNGGSPASSSGTQORRAEGSERRRPRDRSSSSGRSK  
 ERHREHRRRDGTRSGSEASKARSRHGHSGEERAEAAKSGSSSSSGRRKSASATSSSSSSRKDRDLKAHR  
 SRTKSSKEPPSAYKEPPKAYREDKSEPKAYRRRQRLSPLGGRDESPVSHRASQSLRSRKSPPAGGGSS  
 PYSRRLPRSPSPYSRRRSPYSRHSSYERGGDVSPSPYSSSSWRRSRSPYSPVLRSAKSRSRSPYSSRH  
 SRSRSRHLRSLRSLRHSSISPTLTLKSSLAELNKNKKARAAEAARAAEAAKAAEAAKAAEAAKAAKA  
 SNASTPTKNGTETGASVSQTNHVKEVKLKTETHAPSPSSGGTVKSDKAKTKPPLQVTKVDNLTVEKATK  
 KTVVGKESKPAATKEEPVSTKEKSKPLTPSTGAKEKEQHVALVTSTLPLPLPMLPEDKADSLRGNIS  
 VKAVKKEVEKKLRCLLADLPLPELPGDDLKSPPEEKTAQHLHKRRPKICGPRYGEIKEKDIDWGKR  
 CVDKFDIIGIIGEGTYGQYKARDKDTGEMVALKKVRLDNEKEGFPITAIKILRQLTHQSIINMKEI  
 VTDKEDALDFKKDKGAFYLVFEYMDHDLMGLLESLVHFNENHIKSFMRQLMEGLDYCHKKNFLHRDIK  
 SNILLNNGQIKLADFLARLYSSESRPYTNKVIITLWYRPELLLGEERYTPAIDVWSCGICILGELFTK  
 KPFIQANQELAQLELISRICGSPCAVWPVDVIKLPYFNTMKPKQYRKLREEFVIPAAALDLFDYMLA  
 LDPSKRCTAEQALQCEFLRDVEPSKMPPDLPLWQDCHELWSKRRRQKQMGMTDDLSTIKAPRKDSLGL  
 LDDSRNTNPQGVLPQAQLKSQNSNVAPGKQTDPTPQEQSSKSLGGVQPSQTIQPKVETDAAQAAVQS  
 AFAVLLTQLIKAQQSKQKDALMEERENGSGHEAPLQLRPPEPSTPGSGQDDLQHQDRIELTPEPDR  
 PRILPPDQRPPEPEPPVTEEDLDYRTENQHVPTTSSSLTDPHAGVKAALLQLLAQHQPQDDPKREGGI  
 DYPTGDTYVPSDDYKDNFGSSSAAPYVSDGLGSSSAAAPLEARSFIGNSDIQSLDNYSTASSHTGGPP  
 QTSAFTESSFASSVAGYDIIYLNAGPMLFSGDKDRFEYSHGPITVLTNSNDPSTGPESTHPLPAKMHNYN  
 YGGLNQLQENPGGSLMHGQTWTSPAQGGYSGYGRGHISTAGRGRGRGLPY

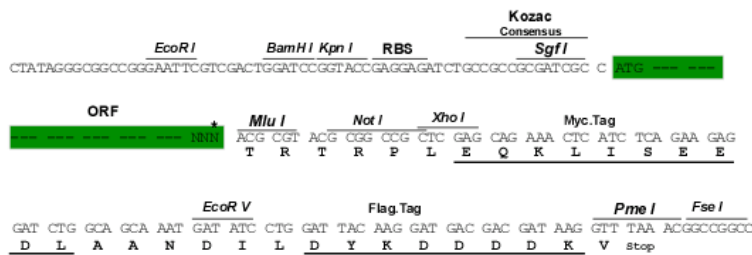
TRTRPLEQKLISEEDLAANDILDYKDDDDKV

Restriction Sites:

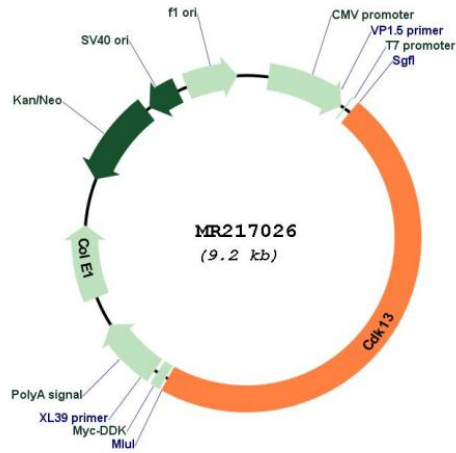
Sgfl-MluI

Cloning Scheme:

Cloning sites used for ORF Shuttling:



\* The last codon before the Stop codon of the ORF

**Plasmid Map:**


**ACCN:** NM\_027118

**ORF Size:** 4353 bp

**OTI Disclaimer:** The molecular sequence of this clone aligns with the gene accession number as a point of reference only. However, individual transcript sequences of the same gene can differ through naturally occurring variations (e.g. polymorphisms), each with its own valid existence. This clone is substantially in agreement with the reference, but a complete review of all prevailing variants is recommended prior to use. [More info](#)

**OTI Annotation:** This clone was engineered to express the complete ORF with an expression tag. Expression varies depending on the nature of the gene.

**Components:** The ORF clone is ion-exchange column purified and shipped in a 2D barcoded Matrix tube containing 10ug of transfection-ready, dried plasmid DNA (reconstitute with 100 ul of water).

**Reconstitution Method:**

1. Centrifuge at 5,000xg for 5min.
2. Carefully open the tube and add 100ul of sterile water to dissolve the DNA.
3. Close the tube and incubate for 10 minutes at room temperature.
4. Briefly vortex the tube and then do a quick spin (less than 5000xg) to concentrate the liquid at the bottom.
5. Store the suspended plasmid at -20°C. The DNA is stable for at least one year from date of shipping when stored at -20°C.

**RefSeq:** [NM\\_027118.1](#), [NP\\_081394.1](#)

**RefSeq Size:** 6901 bp

**RefSeq ORF:** 4356 bp

**Locus ID:** 69562

**UniProt ID:** [Q69ZA1](#)

**Cytogenetics:** 13 A2

**MW:** 158.6 kDa

**Gene Summary:** Cyclin-dependent kinase which displays CTD kinase activity and is required for RNA splicing. Has CTD kinase activity by hyperphosphorylating the C-terminal heptapeptide repeat domain (CTD) of the largest RNA polymerase II subunit RPB1, thereby acting as a key regulator of transcription elongation. Required for RNA splicing, probably by phosphorylating SRSF1/SF2. Required during hematopoiesis.[UniProtKB/Swiss-Prot Function]