

## Product datasheet for MR216991

### Fbxo6 (NM\_001163705) Mouse Tagged ORF Clone

#### Product data:

Product Type:	Expression Plasmids
Product Name:	Fbxo6 (NM_001163705) Mouse Tagged ORF Clone
Tag:	Myc-DDK
Symbol:	Fbxo6
Synonyms:	AA408845; FBG2; Fbs2; Fbx6b; Fbxo6b
Mammalian Cell Selection:	Neomycin
Vector:	pCMV6-Entry (PS100001)
E. coli Selection:	Kanamycin (25 ug/mL)
ORF Nucleotide Sequence:	>MR216991 ORF sequence Red=Cloning site Blue=ORF Green=Tags(s)

TTTTGTAATACGACTCACTATAGGGCGCCGGGAATTCGTCGACTGGATCCGGTACCGAGGAGATCTGCC  
GCC**CGATCGCC**

ATGGTCCACATCAACGAGCTGCCAGAGAACATTCTCCTGGAGCTGTTTCATCCATATCCCGGCCCCACAGC  
TGCTGCGCAACTGCCGCTGGTCTGCCGCTCTGGCGAGACCTCATCGATGTGGTGTCCCTATGGAAGCG  
CAAGAGTCTTCGAGAGGGCTTCTCACCAAGACCGGTGCGAGCCCGTGAAGACTGGAAGTCTTCTAT  
ATCCTGTGCAGCCTGCAGAGAACCTCCTTCGGAACCCGTGTGCTGAAGAGAACCTGAGCTCATGGCGGA  
TAGACTCCAACGAGGGGATCGCTGGAAGTGGAGACGCTCCCTGGGAGCTGTGGCACAAGCTTTCCTGA  
CAACAAGGTCAAGAAGTATTTTGTACCTCTTTTGTGAGATGTGCCTCAAATCCCAGATGGTGGACCTCAA  
GCTGAGGGCTACTGCGAGGAGCTGATGGACACCTTTCGGCCTGACATTGTGGTTAAGGACTGGGTTGCC  
CCAGAGCAGACTGTGGCTGCACCTATCAACTCCGGGTACAGCTGGCCTCTGCGGACTACATTGTCTTGGC  
CTCTTTTGTAGCCTCCACCTGTGACATCCAACAGTGGAAATGATGCCAAATGGCAAGAGATTTCCACACC  
TTCTCTGATTACCCTCCAGGTGTCCGTACATCCTTTTCAACACGGGGGCCAGGACACTCAGTTCTGGA  
AAGGCTGGTACGGCCCCGTGTACCAACAGCAGCATCATTATCAGCCACAGGACAGCCAAGAACCCTCC  
CCCTGCCAGAACTCTACCGGAAGAACTGTAGTAATCGGAAGGAGACGGCGAGCTTCGGACTCCAACACT  
CATGAGGGTTTCTCTGGCAAGGGCTATGGCAAAGGCTAAGGCGT

**ACGCGT**ACGCGGCCGCTCGAGCAGAAACTCATCTCAGAAGAGGATCTGGCAGCAAATGATATCCTGGATT  
ACAAGGATGACGACGATAAGGTTTAA



[View online »](#)

**Protein Sequence:** >MR216991 protein sequence  
Red=Cloning site Green=Tags(s)

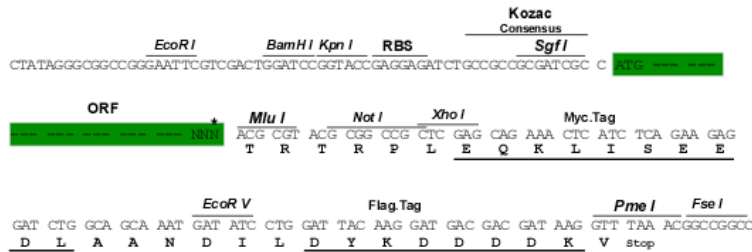
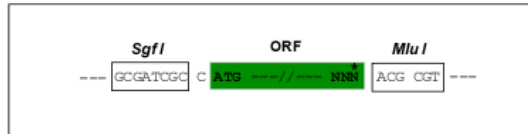
MVHINELPENILLELFIHIPAPQLLRNCRVCRLWRDLIDVVSLWKRKSLREGFFTKDRCEPVEDWKVFY  
 ILCSLQRNLLRNPCAENLSSWRIDSNNGDRWKVETLPGSCGTSFPDNKVKKYFVTSFEMCLKSQMVDLK  
 AEGYCEELMDTFRPDIVVKDWVAPRADCGCTYQLRVQLASADYIVLASFEPPPVTFFQWVNDAKWQEI  
 SHTFSDYPPGVRHILFQHGQDTQFWKGWYGPVRTNSSIIISHRTAKNPPPARTLPEETVVIGRRRRASDSNT  
 HEGFFWQGLWQRLRR

TRTRPLEQKLISEEDLAANDILDYKDDDDKV

**Restriction Sites:** SgfI-MluI

**Cloning Scheme:**

Cloning sites used for ORF Shuttling:



\* The last codon before the Stop codon of the ORF

**ACCN:** NM\_001163705

**ORF Size:** 888 bp

**OTI Disclaimer:** The molecular sequence of this clone aligns with the gene accession number as a point of reference only. However, individual transcript sequences of the same gene can differ through naturally occurring variations (e.g. polymorphisms), each with its own valid existence. This clone is substantially in agreement with the reference, but a complete review of all prevailing variants is recommended prior to use. [More info](#)

**OTI Annotation:** This clone was engineered to express the complete ORF with an expression tag. Expression varies depending on the nature of the gene.

**Components:** The ORF clone is ion-exchange column purified and shipped in a 2D barcoded Matrix tube containing 10ug of transfection-ready, dried plasmid DNA (reconstitute with 100 ul of water).

**Reconstitution Method:**

1. Centrifuge at 5,000xg for 5min.
2. Carefully open the tube and add 100ul of sterile water to dissolve the DNA.
3. Close the tube and incubate for 10 minutes at room temperature.
4. Briefly vortex the tube and then do a quick spin (less than 5000xg) to concentrate the liquid at the bottom.
5. Store the suspended plasmid at -20°C. The DNA is stable for at least one year from date of shipping when stored at -20°C.

**RefSeq:** [NM\\_001163705.1](#), [NP\\_001157177.1](#)

**RefSeq Size:** 1213 bp

**RefSeq ORF:** 888 bp

**Locus ID:** 50762

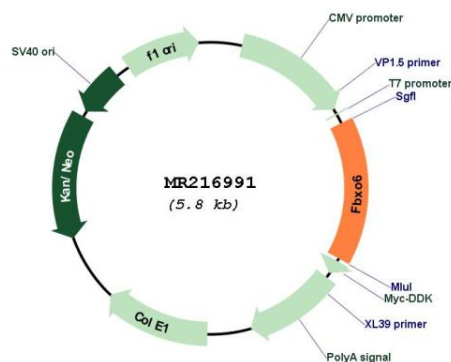
**UniProt ID:** [Q9QZN4](#)

**Cytogenetics:** 4 78.67 cM

**MW:** 34.5 kDa

**Gene Summary:** Substrate-recognition component of some SCF (SKP1-CUL1-F-box protein)-type E3 ubiquitin ligase complexes. Involved in DNA damage response by specifically recognizing activated CHEK1 (phosphorylated on 'Ser-345'), promoting its ubiquitination and degradation. Ubiquitination of CHEK1 is required to insure that activated CHEK1 does not accumulate as cells progress through S phase, or when replication forks encounter transient impediments during normal DNA replication (By similarity). Involved in endoplasmic reticulum-associated degradation pathway (ERAD) for misfolded luminal proteins by recognizing and binding sugar chains on unfolded glycoproteins that are retrotranslocated into the cytosol and promoting their ubiquitination and subsequent degradation. Able to recognize and bind denatured glycoproteins, which are modified with not only high-mannose but also complex-type oligosaccharides. Also recognizes sulfated glycans.[UniProtKB/Swiss-Prot Function]

## Product images:



Circular map for MR216991