

Product datasheet for MR216970

Timeless (NM_001164081) Mouse Tagged ORF Clone

Product data:

Product Type:	Expression Plasmids
Product Name:	Timeless (NM_001164081) Mouse Tagged ORF Clone
Tag:	Myc-DDK
Symbol:	Timeless
Synonyms:	C77407; Debt69; tim
Vector:	pCMV6-Entry (PS100001)
E. coli Selection:	Kanamycin (25 ug/mL)
Cell Selection:	Neomycin
ORF Nucleotide Sequence:	>MR216970 representing NM_001164081 Red=Cloning site Blue=ORF Green=Tags(s)

TTTTGTAATACGACTCACTATAGGGCGCCGGGAATTCGTCGACTGGATCCGGTACCGAGGAGATCTGCC
GCC**CGATCGCC**

ATGGACTTGTACATGATGAACTGTGAACCTCTAGCCACGTGTAGCGCCCTTGGTACTTGAAGGAGGGA
CTTACCACAAGGAGCCGGATTGCCTGGAGAGTGTGAAGGATTTGATCCGATACCTGAGGCACGAGGATGA
GACCCGAGATGTGCGGCAGCAGCTGGGAGCTGCACAGATCCTGCAGAGCGACCTCCTGCCAATCCTCAGC
CAGCATCGCCAGGACAAGCCTCTCTTCGATGCCGTGATCAGGCTGATGGTAAATTTGACACAGCCAGCCT
TGCTCTGTTTTGGCAGCGTGCCTAAGGACTCCAGTGTACGGCACCATTTTCTGCAGGTTCTAACGTACCT
GCAAGCCTACAAAGAGGCCTTTGCCAGTGAAGGCATTTGGAGTCTCAGCGAGACCTTGATGAATTG
CTACAGCTGGGCTGGGAGGATCGCAAGAAGAAGACAACCTTGCTGATCGAGCGGATCCTTCTGCTGGTCA
GAAATATTCTCCATGTCCCGCCAACCTTGAGCAGGAGAAGAGTATCGATGATGATGCCAGCATCCACGA
CCGTCTCCTTTGGGCAATTCACCTCAGTGGCATGGACACTTGCCTCTTCTGTCAGCTCATCCGCC
GAGCAGCAGTGGAGCCTCCATGTGCTGGAGATCATCTCCCTCATGTTCCGAGACCAGACCCTGAGCAGC
TAGCGGGAGTAGGGCAGGAGCCTTGGCTCAGGAGCGAAGCAGGATGTGGCAGAATTGGAGGTGCTGCC
CCAACGGGAGATGGCGGAGAAGAGAGCTCGGGCCCTCCAGCGAGGAAACAGGCACCTCTCGATTTGGGGGC
TCTACATTGTCCAGGGTTGAAATCTATTGGGAGAAGGATGTGCTCTTTCACAAAGGCCTTCACAATC
TCCAGAACTACAGCTCAGATCTGGGAAAGCAGCCAGGAGGTTGCCAAGCGTCGTGAGGCTGCCAGGA
GCTGTCTGTCCATCGCCGCTCTGTCTGAATGTGAGACTTCTCCTCAGAGACTTCTGCTCTGAGTTCCTG
GAGAACTGCTACAACCCGCTCATGGGCGCGGTCAAGGATCATCTGCTTCGGGAGAGAGCGCAGCAGCATG
ACGAGACTTACTACATGTGGCAATGGCTTTCTCATGGCCTTCAACCGAGCTGCCACCTCCGCCCCGG
CCTTGTTTCTGAGACCCTCAGTATCCGTACCTTCACTTTGTGGAGCAGAACCTCACCAACTACTACGAG
ATGATGCTGACAGACCGCAAGGAGGCCCTCCTGGGCGCGCAGGATGCACCTGGCCCTGAAGGCCTACC
AGGAGCTGCTGGCCACGGTGAACGAGATGGACATGTGCCAGATGAGGCTGTTAGGGAGAGCAGTCGTAT
CATCAAAAACAACATTTTCTATATGATGGAGTACCGAGAATTTCTGCGCCTCTTTCGAAAGTTTGAT
GAGAGATACCATCCAGCTCATTCTTCGAGACCTGGTGGAAACCACCCACCTCTTCTCAAATGTTGG



[View online >](#)

Protein Sequence: >MR216970 representing NM_001164081
 Red=Cloning site Green=Tags(s)

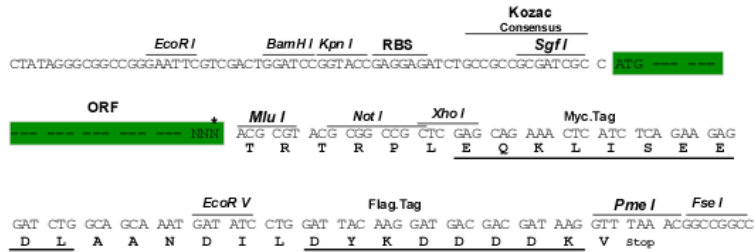
MDLYMMNCELLATCSALGYLEGGTYHKEPDCLESVKDLIRYL RHEDETRDVRQQLGAAQILQSDLLPILT
 QHRQDKPLFDAVIRLMVNLTPALLCFGSVPKDSSVRHHFLQVLTYLQAYKEAFASEKAFGVLSETLYEL
 LQLGWEDRQEEDNLLIERILLVRNILHV PANLEQEKSIDDDASIHDRLLWAIHLSGMDDLLLFLSSSSA
 EQQWSLHVLEIISLMFRDQTPQLAGVGGQRLAQERSTDVAELEVL RQREMAEKRARALQRGNRHSRFGG
 SYIVQGLKSIGEKDVVFHKGLHNLQNYSSDLGKQPRRVPKRRQAAQELSVHRRSVLNVRLF.RDFCSEFL
 ENCYNPLMGAVKDHLRERAQQHDETYMAMAFFMAFNRAATFRPGLVSETLSIRTFHFVEQNLNYYE
 MMLTDRKEAASWARRMHLALKAYQELLATVNEMDMCPDEAVRESSRIKNNIFYMMEYRELFALFRKFD
 ERYHPRSFLRDLVETTHLFLKMLERFCRSRGNLMVQNKRRKKKKKKVQDQGVAFSQSPGELEAMWPALA
 EQLLQCAQDPELSDVPVVPFDAASEVPVEEQRVEAMVRIQDCLTAGQAPQALALLRSAREVWPEGNAFGS
 PVISPGEEMLLQILSTPLPRQPEEGDAEEEEEEEEELQVVQVSEKFNFLYLRKRFASSTIVRA
 YVLLLSRYRQNSAHTNHCI AKMLHRLAHGLGMEALLFQLSLFCLFNRLSDPAAAAAYKELVTFKYIIGK
 FFALAAVNQKAFVELLFWKNTAVVREMTQGYGSLDSGSSSHRAPLWSPEEEAQLQELYLAHKDVEGQDQV
 ETILAHLKVVPRTRKQVIHHLVRMGLADSVKEFQKRKGTQIVLWTEDELELQRLFEEFRDSDDLVQGM
 KNITAKRSRARPVDKLLALGLVSERRQLYKRRKKLAPSCMNGEKSPRPWQEDPEEEDHLPEDSEDE
 ESEEGPSGGQSSSLSAENLGESLRQEGLSAPLLWLQSSLIRAANDREEDGCSQAIPLVPLTEENEEA
 MENEQFQHLLRKLGIRPPSSGQETFWRIPAKLSSSTQLRRAVAASLQQENEEEEEEEEPEPGVPGEQPSEE
 HRTEALRALLSARKRKAGLGPTEEEATGEEEWNSAPKKRQLLSDSEEDDEGRRQAVSGTPRVHRKKRFQ
 IEDEDD

TRTRPLEQKLISEEDLAANDILDYKDDDDKV

Restriction Sites: SgfI-MluI

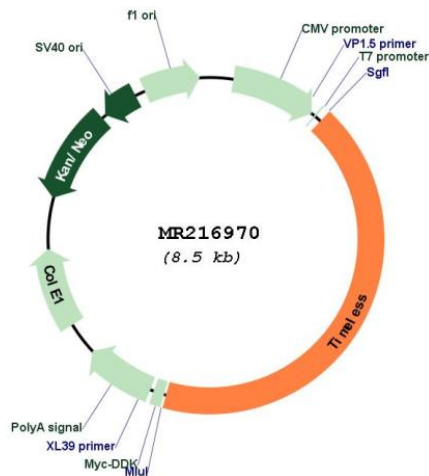
Cloning Scheme:

Cloning sites used for ORF Shuttling:



* The last codon before the Stop codon of the ORF

Plasmid Map:



ACCN: NM_001164081

ORF Size: 3588 bp

OTI Disclaimer: The molecular sequence of this clone aligns with the gene accession number as a point of reference only. However, individual transcript sequences of the same gene can differ through naturally occurring variations (e.g. polymorphisms), each with its own valid existence. This clone is substantially in agreement with the reference, but a complete review of all prevailing variants is recommended prior to use. [More info](#)

OTI Annotation: This clone was engineered to express the complete ORF with an expression tag. Expression varies depending on the nature of the gene.

Components: The ORF clone is ion-exchange column purified and shipped in a 2D barcoded Matrix tube containing 10ug of transfection-ready, dried plasmid DNA (reconstitute with 100 ul of water).

Reconstitution Method:

1. Centrifuge at 5,000xg for 5min.
2. Carefully open the tube and add 100ul of sterile water to dissolve the DNA.
3. Close the tube and incubate for 10 minutes at room temperature.
4. Briefly vortex the tube and then do a quick spin (less than 5000xg) to concentrate the liquid at the bottom.
5. Store the suspended plasmid at -20°C. The DNA is stable for at least one year from date of shipping when stored at -20°C.

RefSeq: [NM_001164081.1](#), [NP_001157553.1](#)

RefSeq Size: 4479 bp

RefSeq ORF: 3594 bp

Locus ID: 21853

UniProt ID: [Q9R1X4](#)

Cytogenetics: 10 76.49 cM

MW: 138 kDa

Gene Summary: The protein encoded by this gene is highly conserved and is involved in cell survival after damage or stress, increase in DNA polymerase epsilon activity, maintenance of telomere length, and epithelial cell morphogenesis. The encoded protein also plays a role in the circadian rhythm autoregulatory loop, interacting with the PERIOD genes (PER1, PER2, and PER3) and others to downregulate activation of PER1 by CLOCK/ARNTL. Changes in this gene or its expression may promote prostate cancer, lung cancer, breast cancer, and mental disorders. Several transcript variants encoding different isoforms have been found for this gene. [provided by RefSeq, Feb 2014]