

## Product datasheet for MR216898

### Phf7 (NM\_027949) Mouse Tagged ORF Clone

#### Product data:

Product Type:	Expression Plasmids
Product Name:	Phf7 (NM_027949) Mouse Tagged ORF Clone
Tag:	Myc-DDK
Symbol:	Phf7
Synonyms:	1700006H01Rik; 1700010P14Rik; AI427892; AW555949
Mammalian Cell Selection:	Neomycin
Vector:	pCMV6-Entry (PS100001)
E. coli Selection:	Kanamycin (25 ug/mL)
ORF Nucleotide Sequence:	>MR216898 ORF sequence Red=Cloning site Blue=ORF Green=Tags(s)

TTTTGTAATACGACTCACTATAGGGCGGCCGGAATTCGTCGACTGGATCCGGTACCGAGGAGATCTGCC  
GCC**CGATCGCC**

ATGAAGACTTTAAAAGAAAAAACAACATCCAAGATTGAGAAAACTATCAGGACTAAGAAGGTAACAC  
AGAGGAAGCTGTCTTCAAGTCTGTTTGCCCTTCTATGCCTTCAAGAACCTGGTGATCCTGAAAACTAGG  
AGAATTTCTTCAGAAAGACAATCTTTGTGTCCATTATTTCTGTCTTATCCTGTCTAGCAGACTGCCTCAG  
AAGGGCCAACCAACAGAGGTCTCCATGGATTTATGCCTGAAGACATCAAAGGGAGGCAGTACGGGCTT  
CTAAGAAGATCTGCTTTGTATGCAAGAAAAAGGAGCTGCTATCAGATGCCAGAATGATCAGTGTGTCCA  
GAACTTCCATCTGCCTTGTGGCCAAGAAAGGGGTTGCCTTTCACAGTTTTTTGGAGAGTACAAATCATAT  
TGTAGAAAAATCGACCAACACAGAATCCACCAGGGGAGTTTGGGGGAGGAAAGCTGTGTCTTGTGTT  
GCGAAAAATTTATCCCGAACAAAGTGTGAGAATCCAGAGCCCATGCTGTAGTCAAGCTATCTATCACCG  
CAAGTGTATCCAGAAATATGCCACACATCAGCAAAGCACTTCTTCAAGTGTCCCGAGTGAACAACCGA  
GAAGAGTTCACAGGAGATGCTGAGGATGGGGATCCACATCCCAGACAGAGATGCTGCCTGGAACTCG  
AGCCAGGGGCTTCTCCGAGTTGTATCAGCGCTATCGGCATTGTGATGCCCCATCTGTCTGTATGAGCA  
AGGCAGAGACAGCTTTGAGGATGAAGGACGGTGGCGCCTCATTTTGTGTGCTACGTGTGGATCCCATGGA  
ACCCACCGGACTGCTCCTCTTAGACCAACAGCAAGAAATGGGAATGTAATGAGTGTTCCTGCTT  
CAACCACGAGT

**ACGCGT**ACGCGGCCGCTCGAGCAGAAACTCATCTCAGAAGAGGATCTGGCAGCAATGATATCCTGGATT  
ACAAGGATGACGACGATAAGGTTTAA



[View online »](#)

**Protein Sequence:** >MR216898 protein sequence  
 Red=Cloning site Green=Tags(s)

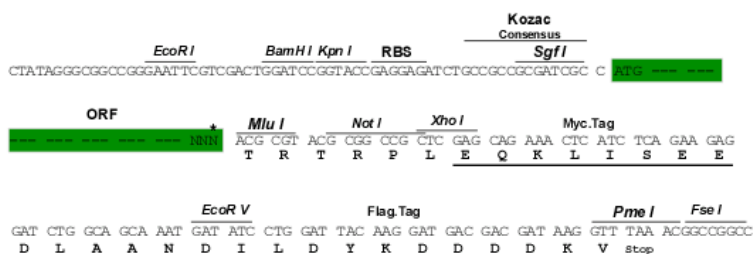
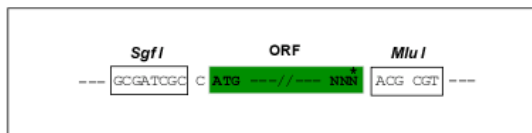
MKTLKEKNKHPRLRKTIRTKKVTQRKLS SSPVCLLCLQEPGDPEKLG EFLQKDNLCVHYFCLILSSRLPQ  
 KGQPNRGLHGFMPEDIKREAVRASKKICFVCKKKGAAIRCQNDQCVQNFHPCGQERGCLSQFFGEYKSY  
 CRKHRPTQNIHQGSLGEESCVLCCENLSRTSVENIQSPCCSQAIYHRKCIQKYAHTSAKHFFKCPQCNNR  
 EEFPQEMLRMGIHIPDRDAAWELEPGAFSELYQRYRHCDAPICLYEQGRDSFEDEGRWRLILCATCGSHG  
 THRDCCSSLRPNSSKKWECNECLPASTTS

TRTRPLEQKLISEEDLAANDILDYKDDDDKV

**Restriction Sites:** SgfI-MluI

**Cloning Scheme:**

Cloning sites used for ORF Shutting:



\* The last codon before the Stop codon of the ORF

**ACCN:** NM\_027949

**ORF Size:** 924 bp

**OTI Disclaimer:** The molecular sequence of this clone aligns with the gene accession number as a point of reference only. However, individual transcript sequences of the same gene can differ through naturally occurring variations (e.g. polymorphisms), each with its own valid existence. This clone is substantially in agreement with the reference, but a complete review of all prevailing variants is recommended prior to use. [More info](#)

**OTI Annotation:** This clone was engineered to express the complete ORF with an expression tag. Expression varies depending on the nature of the gene.

**Components:** The ORF clone is ion-exchange column purified and shipped in a 2D barcoded Matrix tube containing 10ug of transfection-ready, dried plasmid DNA (reconstitute with 100 ul of water).

**Reconstitution Method:**

1. Centrifuge at 5,000xg for 5min.
2. Carefully open the tube and add 100ul of sterile water to dissolve the DNA.
3. Close the tube and incubate for 10 minutes at room temperature.
4. Briefly vortex the tube and then do a quick spin (less than 5000xg) to concentrate the liquid at the bottom.
5. Store the suspended plasmid at -20°C. The DNA is stable for at least one year from date of shipping when stored at -20°C.

**RefSeq:** [NM\\_027949.2](#)

**RefSeq Size:** 1984 bp

**RefSeq ORF:** 924 bp

**Locus ID:** 71838

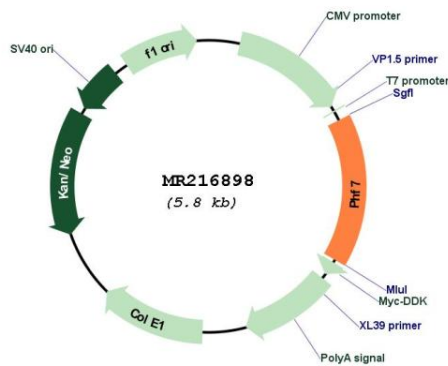
**UniProt ID:** [Q9DAG9](#)

**Cytogenetics:** 14 B

**MW:** 35.4 kDa

**Gene Summary:** May play a role in spermatogenesis.[UniProtKB/Swiss-Prot Function]

**Product images:**



Circular map for MR216898