

Product datasheet for **MR216896**

Pmpcb (NM_028431) Mouse Tagged ORF Clone

Product data:

Product Type:	Expression Plasmids
Product Name:	Pmpcb (NM_028431) Mouse Tagged ORF Clone
Tag:	Myc-DDK
Symbol:	Pmpcb
Synonyms:	3110004O18Rik; MPP11; MPPB; MPPP52
Mammalian Cell Selection:	Neomycin
Vector:	pCMV6-Entry (PS100001)
E. coli Selection:	Kanamycin (25 ug/mL)



[View online »](#)

ORF Nucleotide Sequence:

>MR216896 representing NM_028431
 Red=Cloning site Blue=ORF Green=Tags(s)

TTTTGTAATACGACTCACTATAGGGCGGCCGGAATTCGTCGACTGGATCCGGTACCGAGGAGATCTGCC
 GCC**GCGATCGCC**

ATGGCGCGGCCGCTCTATCCCGACGCTGTTGCCAGAGGCCCGCGGCCCTGTGGGGATTACACGAA
 GGCTTCGCTTCGCCGCGCCGCTGCTCAGCCGTTGTACTTTGGAGGGGACCGACTAAGAAGCACACAGGC
 TGCCCCACAGTTGTGCTGAATGTCCCGAGACACAAGTGACATGTTTGAAAATGGACTCAGAGTAGCT
 TCTGAAAACCTCTGGGCTCTCAACGTGCACAGTTGGGCTGTGGATCGATGCGGGAAGTCGCTATGAGAATG
 AGAAGAACAACGGCACCGCCACTTCTGGAGCACATGGCCTTCAAGGGCACTAAAAAGAGGTCCCAGTT
 AGACCTTGAACCTGAGATTGAGAATATGGGCGCTCATCTTAACGCCTATACCTCCAGAGAGCAGACTGTC
 TACTACGCCAAAGCATTCTCGAGAGATTGCCAGAGCTGTAGAAATCTTGCTGACATAATTCAGAACA
 GCACACTGGGAGAAGCAGAGATTGAGCGTGAGCGGGGAGTAATCCTGAGAGAGATGCAGGAAGTTGAAAC
 CAACTTGAAGAAGTTGTTTTGATTATCTTCATGCGACAGCCTATCAAATACTGCACTTGGACGGACA
 ATTCTGGGACCAACTGAAAATATCAAATCTATAAATCGTAAGGACCTAGTGGATTACATAACCACACACT
 ACAAGGGACCAAGAATTGTACTGGCTGCCGCGGAGGTGTTTGCATAACGAACTGCTGGAGTTAGCAAA
 GTTCCATTTTGGTGACTCTTTGTGCTCACACAAAGGAGCTATACCAGCTCTGCCTCCCTGCAAGTTCCT
 GGAAGTGAGATTCGGGTGAGGGATGACAAGATGCCATTGGCGCACCTTGAATAGCTGTTGAAGCAGTTG
 GTTGGGCCCATCCAGACACGATCTGTCTCATGGTCGAAACACATTGATAGGCAACTGGGATCGCTCTTT
 TGGAGGAGGAATGAATTTATCTAGCAAGCTGGCCCACTCACTTGCATGGCAATCTCTGCCACAGCTTC
 CAGTCTTCAACTTTCATATACAGACACAGGATTATGGGGACTCTATATGGTCTGTGAACAAGCCACGG
 TTGCTGACATGCTGCACGTTGTACAAAACGAATGGAAGCGTCTGTGTACAGATGTGACTGAGAGGAGGT
 TGCACGTGCAAAAAATCTTCTGAAAACAACATGCTGCTGCAGCTTGTGAGGGTCAACTCCAATTTGTGAA
 GACATTGGTAGGCAGATGCTATGCTATAATAGGAGAATCCTATCCCGAGCTTGAAGCAAGAATTGATG
 CTGTGGATGCGGAGACGGTTCGACGAGTGTGCACCAAGTACATTCATGACAAAAGCCAGCTATTGCTGC
 TCTGGTCTATTGAGCGACTACCAGATTTTAACCAGATTTGTAGTAACATGCGTTGGATTCTGTGAC

ACGCGTACGCGGCCGCTCGAGCAGAACTCATCTCAGAAGAGGATCTGGCAGCAATGATATCCTGGATT
 ACAAGGATGACGACGATAAGGTTTAA

Protein Sequence:

>MR216896 representing NM_028431
 Red=Cloning site Green=Tags(s)

MAAAALSRLLPEARRRLWGFTRRLPLRRAAAQPLYFGGDLRSTQAAPQVVLNVPETQVTCLENLRVA
 SENSGLSTCTVGLWIDAGSRYENEKNGTAHFLEHMAFKGTKKRSQLDLELEIENMG AHLNAYTSREQTV
 YYAKAFSRDLPRAVEILADI IQNSTLGEAEIERERGVILREMQEVETNLQEVVFDYLHATAYQNTALGRT
 ILGPTENIKSINRKDLVDYITTHYKPRIVLAAAGGVCHNELLELAKFHFGDSLCSHGAI PALPPCKFT
 GSEIRVRDDKMPLAHLAIAVEAVGWAHPDITCLMVANTLIGNWDRSFGGGMNLSKLAQLTCHGNLCHSF
 QSFNTSYDTGLWGLYMVCEQATVADMLHVQNEWKRLCTDVTESEVARAKNLLKTNMLLQLDGSTPICE
 DIGRQMLCYNRRIPPIPELEARIDAVDAETVRRVCTKYIHDKSPAIAALGPIERLPDFNQICSNMRWIRD

TRTRPLEQKLI SEEDLAANDILDYKDDDDKV

Chromatograms:

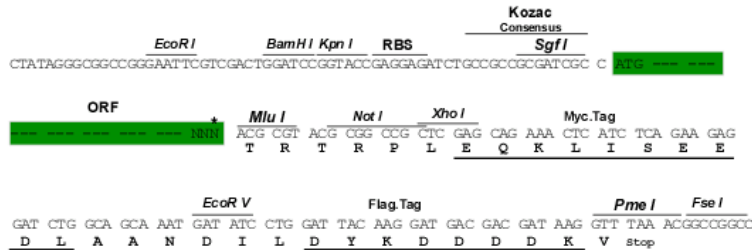
https://cdn.origene.com/chromatograms/mm9045_d02.zip

Restriction Sites:

Sgfl-Mlul

Cloning Scheme:

Cloning sites used for ORF Shuttling:



* The last codon before the Stop codon of the ORF

ACCN: NM_028431

ORF Size: 1467 bp

OTI Disclaimer: The molecular sequence of this clone aligns with the gene accession number as a point of reference only. However, individual transcript sequences of the same gene can differ through naturally occurring variations (e.g. polymorphisms), each with its own valid existence. This clone is substantially in agreement with the reference, but a complete review of all prevailing variants is recommended prior to use. [More info](#)

OTI Annotation: This clone was engineered to express the complete ORF with an expression tag. Expression varies depending on the nature of the gene.

Components: The ORF clone is ion-exchange column purified and shipped in a 2D barcoded Matrix tube containing 10ug of transfection-ready, dried plasmid DNA (reconstitute with 100 ul of water).

Reconstitution Method:

1. Centrifuge at 5,000xg for 5min.
2. Carefully open the tube and add 100ul of sterile water to dissolve the DNA.
3. Close the tube and incubate for 10 minutes at room temperature.
4. Briefly vortex the tube and then do a quick spin (less than 5000xg) to concentrate the liquid at the bottom.
5. Store the suspended plasmid at -20°C. The DNA is stable for at least one year from date of shipping when stored at -20°C.

RefSeq: [NM_028431.2](#), [NP_082707.1](#)

RefSeq Size: 1596 bp

RefSeq ORF: 1470 bp

Locus ID: 73078

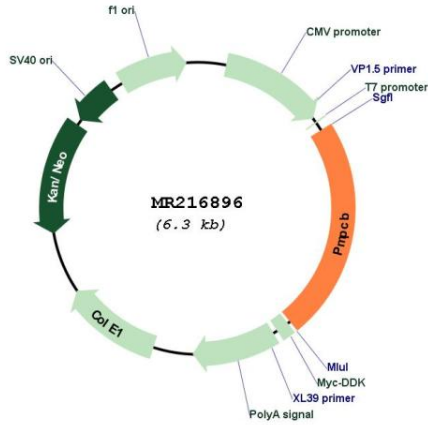
UniProt ID: [Q9CXT8](#)

Cytogenetics: 5 A3

MW: 55.1 kDa

Gene Summary: Catalytic subunit of the essential mitochondrial processing protease (MPP), which is required for maturation of the majority of mitochondrial precursor proteins (By similarity). Most MPP cleavage sites follow an arginine at position -2 (By similarity).[UniProtKB/Swiss-Prot Function]

Product images:



Circular map for MR216896