

Product datasheet for **MR216814**

Plekhb1 (NM_013746) Mouse Tagged ORF Clone

Product data:

Product Type: Expression Plasmids
Product Name: Plekhb1 (NM_013746) Mouse Tagged ORF Clone
Tag: Myc-DDK
Symbol: Plekhb1
Synonyms: AI315628; evt-1; PHR1; Phret1
Mammalian Cell Selection: Neomycin
Vector: pCMV6-Entry (PS100001)
E. coli Selection: Kanamycin (25 ug/mL)
ORF Nucleotide Sequence: >MR216814 representing NM_013746
 Red=Cloning site Blue=ORF Green=Tags(s)

TTTTGTAATACGACTCACTATAGGGCGCCGGGAATTCGTCGACTGGATCCGGTACCGAGGAGATCTGCC
 GCC**CGATCGCC**

ATGAGCCCGGCAACCCCGTTCCACCCGACTCCATCCTGGAAAGTCCTTTGAAGAAATGGCCCTGGTGA
 GGGGCGGCTGGCTGTGGAGACAGAGCTCCATCCTCCGCCGCTGGAAGCGGAATTGGTTCGCTCTGTGGTT
 GGATGGCACACTGGGTTACTACCATGACGAGACGGCACAGGACGAGGAGGACCGAGTAGTCATCCACTTC
 AATGTCCGAGACATAAAGGTCGGCCAAGAGTGTGAGGATGTGACGCCCCAGAGGGCAGGAGCCGAGATG
 GCCTGCTGACAGTGAACCTGCGGGAGGGTTCGCCCTGCACCTGTGCGCTGAGACCCGGGATGATGCCAT
 AGCATGGAAGACTGCCCTGATGGAGGCAAATCCACCCCGCCCGAGCTGGAGCCACCGTCCCACCCAGG
 AGCCGTCGGGTTTGCCCTAAGGTCAGGTGTACGACCCTCTCATGGAACCCCTGTAAGGTTGAGAGGCGGA
 TCTGGGTACGCGTCTACAGCCGTATCAGGACTACTATGAGGTGGTGCCACCAACGCACATGAAGCCAC
 ATATGTCCGACGCTACTATGGGCCACCTTATGCAGGTCCTGGTGTGACACACGTGATAGTTCGAGAGGAC
 CCCTGCTACAGCTCAGGCGCCCTTTGGCCATGGGCATGCTTGTGGGCTGCCACGGGTGCTGCTCTTG
 GTTCACTTATGTGGTCGCTTGTGGTTC

AG**CGGACCG**ACGCGTACGCGCCGCTCGAGCAGAACTCATCTCAGAAGAGGATCTGGCAGCAAATGATATCC
 TGGATTACAAGGATGACGACGATAAGGTTTAA



[View online »](#)

Protein Sequence: >MR216814 representing NM_013746
 Red=Cloning site Green=Tags(s)

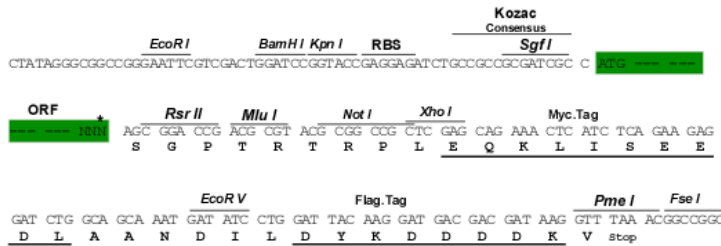
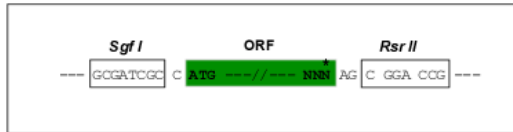
MSPATPVPPDSILESPFEEMALVRGGWLWRQSSILRRWKRNFALWLDGTLGYHDETAQDEEDRVVIHF
 NVRDIKVGQECQDVQPPEGRSRDGLLTVNLREGSRLHLCAETRDDAIWKTALMEANSTPAPAGATVPPR
 SRRVCPKVRCTTLSWNPCKVERRIWRVYSPYQDYVEVPPNAHEATYVRSYYGPPYAGPGVTHVIVRED
 PCYSSGAPLAMGMLAGAATGAALGSLMWSPCWF

SGPTRRRLEQKLISEEDLAANDILDYKDDDDKV

Restriction Sites: SgfI-RsrII

Cloning Scheme:

Cloning sites used for ORF Shuttling:



* The last codon before the Stop codon of the ORF

ACCN: NM_013746

ORF Size: 729 bp

OTI Disclaimer: The molecular sequence of this clone aligns with the gene accession number as a point of reference only. However, individual transcript sequences of the same gene can differ through naturally occurring variations (e.g. polymorphisms), each with its own valid existence. This clone is substantially in agreement with the reference, but a complete review of all prevailing variants is recommended prior to use. [More info](#)

OTI Annotation: This clone was engineered to express the complete ORF with an expression tag. Expression varies depending on the nature of the gene.

Components: The ORF clone is ion-exchange column purified and shipped in a 2D barcoded Matrix tube containing 10ug of transfection-ready, dried plasmid DNA (reconstitute with 100 ul of water).

Reconstitution Method:

1. Centrifuge at 5,000xg for 5min.
2. Carefully open the tube and add 100ul of sterile water to dissolve the DNA.
3. Close the tube and incubate for 10 minutes at room temperature.
4. Briefly vortex the tube and then do a quick spin (less than 5000xg) to concentrate the liquid at the bottom.
5. Store the suspended plasmid at -20°C. The DNA is stable for at least one year from date of shipping when stored at -20°C.

RefSeq: [NM_013746.3](#), [NP_038774.1](#)

RefSeq Size: 2076 bp

RefSeq ORF: 732 bp

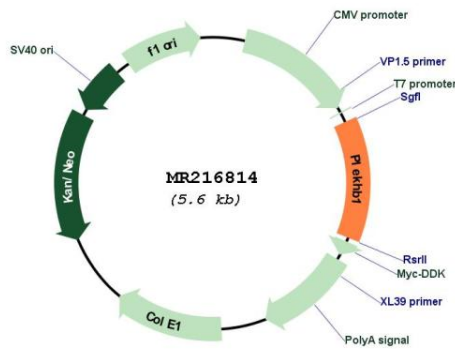
Locus ID: 27276

UniProt ID: [Q9QYE9](#)

Cytogenetics: 7 E2

MW: 27.8 kDa

Product images:



Circular map for MR216814