

## Product datasheet for MR216812

### Wbp1 (NM\_016757) Mouse Tagged ORF Clone

#### Product data:

Product Type:	Expression Plasmids
Product Name:	Wbp1 (NM_016757) Mouse Tagged ORF Clone
Tag:	Myc-DDK
Symbol:	Wbp1
Synonyms:	A1255152
Mammalian Cell Selection:	Neomycin
Vector:	pCMV6-Entry (PS100001)
E. coli Selection:	Kanamycin (25 ug/mL)
ORF Nucleotide Sequence:	>MR216812 representing NM_016757 Red=Cloning site Blue=ORF Green=Tags(s)

TTTTGTAATACGACTCACTATAGGGCGGCCGGAATTCGTCGACTGGATCCGGTACCGAGGAGATCTGCC  
GCC**CGATCGCC**

ATGGCTCGGGCCAGCAGCAGGAACAGCAGCAAGAGGCCTGGGGTCACTTCAGGCGCCGCAACAGCAGC  
AGAGTCCGGCAGCATCTTCTTTGAGGGAGCAATTTGGAGACGAGCTGGAACCCAGACTCGCGCCCTGGA  
TACCATCCTTTATCATCCACAGCAATCCCATCTGCTTCGAGAGCTGTGCCAGGAGTGAATACCCAGCCC  
TACCTCTGTGAGACTGGTCATTGCTGTGGGAGACTGGCTGCTGCACCTACTACTATGAAGTCTGGTGGT  
TCTGGCTGCTTTGGACTGTCCTCATCTTTAGCTGCTGTTGTGCCTTCCGCCACCGAAGGGCTAAACT  
CAGGCTGCAACAGCAACAGCGGCAGCGTGAAATCAACTGTTGGCTTACCATGGGGCATGCCACGGGGCT  
GGCCCTGTTCCAACCGGTTCACTGCTTGACCTTCGCTCCTCAGCGCCTTCAAACCCAGCCTACGAGG  
ATGTGGTTCACCACCCAGGCACACCGCCACCTCCTTACACTGTGGGCCAGGCTACCCCTGGACTACTTC  
CAGTGAATGCACCCGCTGCTCTCCGAATCCAGCTGCTCTGCCACTTGGAGGGGACAAATGTAGAAGGT  
GTTTCCTCCAGCAGAGTGTCTCCCTCACCAGGAGGGTGAAGCCAGGCAGGATTGAGCCAGTTTACA  
TACCCCTTCTGCCGCTATCGTCGCCTAACTGGTGACTCGGGTATTGAGCTCTGCCCTTGTCTGACTC  
CAGTGAAGGTGAGCCACTCAAGGAAGCGAGGGCTAGTGCCTCCAGCCAGATCTGGAAGACCATTCCCCT  
TGTGCACTGCCCCAGATTCTGTGTCCCAAGTTCCTCCATGGGGCTGGCTTCTAGTTGTGGGACATCC  
CA

**ACGCGT**ACGCGGCCGCTCGAGCAGAACTCATCTCAGAAGAGGATCTGGCAGCAAATGATATCCTGGATT  
ACAAGGATGACGACGATAAGGTTTAA



[View online »](#)

**Protein Sequence:** >MR216812 representing NM\_016757  
Red=Cloning site Green=Tags(s)

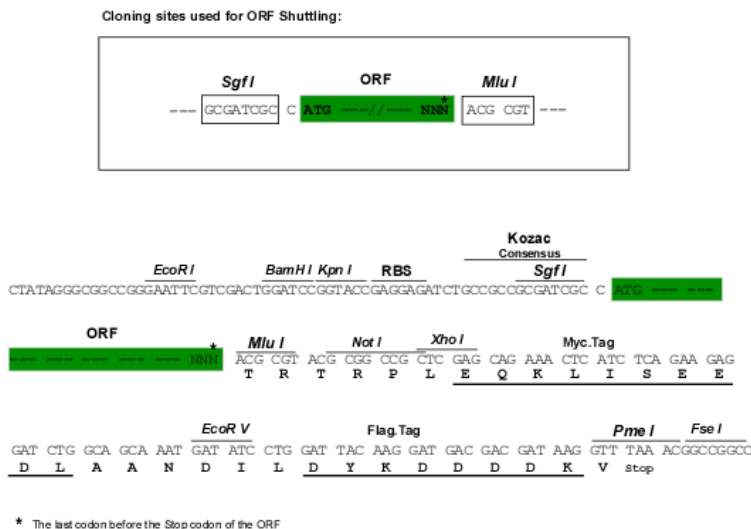
MARASSRNSSEEAWGSLQAPQQQSPAASSLEGAIWRRAGTQTRALDITL YHPQQSHLLRELCPGVNTQP  
 YLCETGHCCGETGCCTYYYELWWFWLLWTVLILFSCCCAFRRRAKRLRQQQRQREINLLAYHGACHGA  
 GPVPTGSLDLRLLSAFKPPAYEDVVHHPGTPPPPYTVGPGYPWTTSSSECTRCSSESSCSAHLEGTNVEG  
 VSSQQSALPHQEGEPAGLSPVHIPPSCRYPRLTGDSGIELCPCPDSSEGEPLKEARASASQPDLEDHSP  
 CALPPDSVSQVPPMGLASSCGDIP

TRTRPLEQKLISEEDLAANDILDYKDDDDKV

**Chromatograms:** [https://cdn.origene.com/chromatograms/mm9028\\_e07.zip](https://cdn.origene.com/chromatograms/mm9028_e07.zip)

**Restriction Sites:** SgfI-MluI

**Cloning Scheme:**



**ACCN:** NM\_016757

**ORF Size:** 912 bp

**OTI Disclaimer:** The molecular sequence of this clone aligns with the gene accession number as a point of reference only. However, individual transcript sequences of the same gene can differ through naturally occurring variations (e.g. polymorphisms), each with its own valid existence. This clone is substantially in agreement with the reference, but a complete review of all prevailing variants is recommended prior to use. [More info](#)

**OTI Annotation:** This clone was engineered to express the complete ORF with an expression tag. Expression varies depending on the nature of the gene.

**Components:** The ORF clone is ion-exchange column purified and shipped in a 2D barcoded Matrix tube containing 10ug of transfection-ready, dried plasmid DNA (reconstitute with 100 ul of water).

**Reconstitution Method:**

1. Centrifuge at 5,000xg for 5min.
2. Carefully open the tube and add 100ul of sterile water to dissolve the DNA.
3. Close the tube and incubate for 10 minutes at room temperature.
4. Briefly vortex the tube and then do a quick spin (less than 5000xg) to concentrate the liquid at the bottom.
5. Store the suspended plasmid at -20°C. The DNA is stable for at least one year from date of shipping when stored at -20°C.

**RefSeq:** [NM\\_016757.2](#), [NP\\_058037.2](#)

**RefSeq Size:** 1338 bp

**RefSeq ORF:** 915 bp

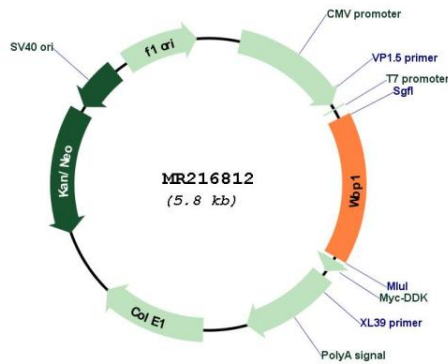
**Locus ID:** 22377

**UniProt ID:** [P97764](#)

**Cytogenetics:** 6 C3

**MW:** 33.6 kDa

**Product images:**



Circular map for MR216812