

Product datasheet for MR216794

Grid2ip (NM_001159321) Mouse Tagged ORF Clone

Product data:

Product Type:	Expression Plasmids
Product Name:	Grid2ip (NM_001159321) Mouse Tagged ORF Clone
Tag:	Myc-DDK
Symbol:	Grid2ip
Mammalian Cell Selection:	Neomycin
Vector:	pCMV6-Entry (PS100001)
E. coli Selection:	Kanamycin (25 ug/mL)
ORF Nucleotide Sequence:	>MR216794 representing NM_001159321 Red=Cloning site Blue=ORF Green=Tags(s)

TTTTGTAATACGACTCACTATAGGGCGGCCGGAATTCGTCGACTGGATCCGGTACCGAGGAGATCTGCC
GCCCGATCGCC

ATGCCAGCCACCAATCAAGGCTGGCCCCGAGGACTTCGGCTTCCAGCTGGGCGGCTCTGGCCCTGCTTCG
TGATAGAGGTGGCTGAAGGAAGCAGCGCGCAGCTGGGGGTTGCGGCCGGGGATCAGATCCTGGAAGT
GGAGGGGCTGGCTGTGGGTGGCCTGAGCCGAGAGCGCATCGTGCCTTGGCACGGCGCTGCCCTCGAGTG
CCACCCAGCCTCGTGTGCTCCAGGCCCGAGGGTGGCCCCACAGCCTTGACAGCAGCTGGCTAACCC
GGCGATTGGCCGAGCCTCCCGCTGAGCCGCAACTGCTGCGTTTGGCTGGTGGTCCAGACCAGATGC
TGTGCACAGAGAGCGCAGGCGCAAGGCCAGGAGTTGAGCTGCCAGGTAGATGACATCTTGGGGGATCGG
CTGACAGCCAAGGAGCAGGTGTTTACTGCACTGAAGCAGTTCGCTGCCGAGCAACGGGTGGATGAGCTGG
TGTGGACCCTCACTCTCGTGCTGCCAGCGAGGCCAGGGGCCAGTCTGGACAACCTCAGGATCTTTAT
TCCAAAAAGCATCGGGCGCGCTTCGACGAGGTGGTGTGCGAGGGTCTGCTGGGCAAGCTGTGCCGTGCT
CGGAGGGCGCAGGGCGCACAGCCTTTGCGTGGAGCCGCGCAGGAGCGCCCGGAGCGCCTCTTAGTGT
CCACGCGCGCTAGCGCCGCTCCCGCCGTCGGATGAGCCACCCCGGGAAGGCAACCTCGCTGCTGGG
CGGTGCGACTGGCCCTGGGGTCTCGTAGGACGGTTCGAGTTTATAAAGGCAACAAGAGTTTCGGCTTC
ACTCTGCGAGGCCATGGACCGGTCTGGATCGAATCTGTCTGCCAGCCCGGCTGAAAATGCCTCCC
TCAAGTCAGGTGACCGGATCCTTCTCCTCAATGGATTGGACATGAGGAACCTGCCACGACAAGGTGGT
GTCCATGTTGCAGGGCAGTGGCGCCATGCCACGCTGGTGGTAGAGGAAGGACCGGTCCCTTTCCGCACT
GATTGAGATTCTGATTCCCCGACCCGGGCGTCAGCTCTCACCTCGCTGCAGTGGGTGGCGGATATCC
TGCTTCCAGTATCCGAGTCCAGGGGAGGACCTTCAGCCAGCAGCTGGACCACCTCCTCACTCCTCCCGA
GCGCTATGGAGTCTGCCGAGCTCTGAGCGCTTCTTTCAGCACAGGAACATCGATACCCTCATCGTGGAT
GTACCCCGTCTGGACACACCCGCCAAGCAGTACTCTGGCAGTTCCTCTACCAGCTGCTGACCTACG
AGGACAGGAGCTGTGTCAGGAGAAGATCGCGTCTTCTCGGCTACACAGCCATGACGGAACCTGAATC
CTCACTGGACCTCGAGCCAGAGTCTACACCAGAGCCCACACCAGAGCCACAACCAGGAGTCCCTGAGG
GCCTTTCCATGTGCCGTCGAGCTTCGCTCCAGGGCTGGAGACCAGCCTCAGCTGTGGTCTCGGTG
ACTGCCCTGAGATGCCCTACCTCTGATCCCAGGCGAGCGTCAGGCTGGCGATGGCACATCCCTCCCGGA



[View online »](#)

AACCCCTAACCCCAAATGATGTCAGCGGTCTATGCAGAGCTCGAGTCTCGACTGAACAGCAGCTTCAAA
GGGAAGATAGGGACCATGTCAAATCCCGGCCTCTCCACCAGTCCCAGCCTGGTCGGCACATCAGGGC
CCAGGACCTGTCTGGAGTCTCTGGCCAGTGACCGGCTCTGCCTTCCCCGTGCTATGACCCGCTGTG
TTCTGGGGTCTGGCCTCTCCAGCAGCTCGGAATCCCACCCCTACGCCAGCTTGGACAGCAGCAGGGCG
CCCTCCCACAGCCAGGCCTTGGATCCATCCACGCCGACGCCCCCAAGCCAGACCCCATCCGGCCGC
CCAGTCGCGGAAGCTCTTCGCCTTCTCACGCCAGTCCGGAGCCGAGACACAGATCGCTTCCTGGATGC
GCTGAGCGAGCAGCTGGTCCCGCCTCAGCATCGTGGATGACTTCTGACACCCGAGAATGACTATGAA
GAGATGAGCTTCCATGATGACCAGGGCAGCTTTGTGACCAACGAGAGGAGCAGCGCTAGCGAGTGTCA
GCAGCAGCGAGGAGGCAGTTCTCTGACCTACTCTCCATCTCCGACCACATCCCCCACCTCCTACTCAG
CCCCCGCGCCACCGCCCTGCCTTTCATGACCCCAAGCCTAGCTCCCGCACCTCCGATGGTCCCCGA
GGTCCCCCTCAGTCATTGACCAAACCCCTCACCCAGATCAACCATCCAGTCCCACCCCAACCCCAACCC
CTTACCCCACTGTGCCCTGTGACCCCCATGCTATCCCGAGGCGTGGGCCACCGCCGAGTGGAGC
CAGCCATATGAGCGTCAAGCGTTACGTTGGGAACAGGTGGAGAAGTCAAGGCCACCATCTGGGGTCA
CTTGGGAAGACTCTGACTATGACAAGTGAAGTGAATACCTCGACCTGGAGCTCCACTTCG
GCACCCAGAACTCCGAAGCCAGTGCCCGGCCGGAGCCCTTCCAGGAAGAAGGAAGTGGTGGAGATCTT
GTCCACAAAGAAGGCCTACAATACCTCCATTCTCTAGCGCACCTGAAGCTGACCCCTGGCGAGCTGCGG
CAAGTGCTCATGAGCATGGAACCCCGGCCTGGAGCCTGCTCATCTGGCGCAGCTGCTGCTTTCGCTC
CTGACGCCGACGAGGAACAGCGATATCAGGCTTCCGCGAGGCTCCGGGTGCGCTCAGTGAGCCGGACCA
GTTGCTGCTGCAGATGCTGTCGGTTCGGAATACAAGACCCGCTGCGCAGTCTACACTTCCAGGCTACC
TTGCAGGAGAAGACAGAGGAGATACGAGGCAGCCTCGAGTGTCTGCGACAGGCATCTCTGGAGCTCAAAA
ACAGCCGAAACTCGCCAAGATCCTGGAGTTGTGTTGGCCATGGTAACTATCTCAACGATGGACAGCC
CAAGACCAACAAGACCCTGGCTTCAAGATCAACTTCTGACCGAGCTAACTCCACCAAGACAGTGGAC
GGGAAGTCCACCTTCTGCACATCCTTGCCAAATCGCTAAGCCAGCACTTCCCTGAGCTCCTGGGCTTG
CCCAGGACCTGCCACTGTGCCCTGGCTGCCAAAGTGAACCAGCGAGCCCTGACTGGTACCTGGCTGA
CCTCCATGACACCGTCAGTGAGATTAGGTGGCCTGCCAGAGCATGGCCCTTCCAGTGAGGACAGGTTT
GCTGTGTCATGGCTTCTTTCTGGAAACAGCGCAGCCAGCCCTGCGAGCGTTGGATGGTCTGCAGCGAG
AGGCCATGGAGGAGCTAGGGAAGGCTCTGGCCTTCTCGGAGAGGACTCCAAGGCCACTACCTCAGAGGC
CTTCTTTGGCATTTTTCAGAATTCATGAGCAAATTTGAGAGAGCCCTCAGCGACCTGCAGGCAGGGAT
GGCCACGCAGCTCAGGGATGGTGCACCCCTGGCCTGG

ACGCGTACGCGGCCGCTCGAGCAGAACTCATCTCAGAAGAGGATCTGGCAGCAAATGATATCCTGGATT
ACAAGGATGACGACGATAAGGTTTAA

Protein Sequence: >MR216794 representing NM_001159321
 Red=Cloning site Green=Tags(s)

```
MPATNQGWPEDFGFQLGGSGPCFVIEVAEGSSAHAGGLRPGDQILEVEGLAVGGLSRERIVRLARRCPRV
PPSLGVLPGPEGPTALTAAWL TRRFGRSLPLSRELLRLAGGPRPDAVHRERRRKAQEFSCQVDDILGDR
LTAKEQVFTALKQFAAEQRVDELVWTL TLVLPSEAQGPVLDNLRIFIPKKHRRARFDEVVSQGLLGKLCRA
RRAQGAQRLRRSRSEERPERLLVSTRASAAPRRPDEPPPRKATSLGGRTPGGGPRRTVRVYKGNKSFGE
TLRGHGPVWIESVLPSPAENASLKSQDRILFLNGLDMRNCSDHKVVSMLQSGSAMP TLVVEEGPVPFAS
DSDSLDSPTRASALTSLQWVADILPSSIRVQGR TFSQQLDHLLTPPERYGVCRALERFFQHRNIDTLIVD
VYVPLDTPAKQVLWQFLYQLLTYEEQELCQEKIACFLGYTAMTEPSSLDLEPESTPEPTPEPQPRSSLR
ASSMCRRLSRSQLETSLSGPGDCPEMPLPLIPGERQAGDGTSLPETPNPKMMSAVYAELESRLNSSFK
GKIGTMSKSRASPPVPSLVGTSGPRTL SGVSWPSDRLLPSPCYDPLCSGGLASPSSESHPHYASLDSSRA
PSPQPLGSIHADSPSPDIRPPSRKLF AFSRPVRSRDTDRFLDALSEQLGPRLSIVDDFLTPENDYE
EMSFHDDQGSFVTNERSSASECVSSEEGSSLTYSSISDHIPPPPLSPPPPPPLPFHDPKPSRRTSDGPR
GPPQSLTKPLTQINHPVPPPPPPPLPPVPCAPPMLSRGVGHRSETSHMSVKRLRWEQVENSEGTIWGQ
LGEDSDYDKLSDMVKYLDLELHFGTQKPKPVGPEPFRKKEVVEILSHKKAYNTSILLAHLKLTGELR
QVLMSEPRRLEPAHLAQLLLFAPDADEEQRYQAFREAPGRLSEPDQFVLQMLSVPEYKTRLRSLHFQAT
LQEKTEEIRGSLECLRQASLELKNSRKLAKILEFVLMGNYLNDGQPKTNKTTGFKINFLTELNSTKTVD
GKSTFLHILAKSLSQHFPELLGFAQDLTPVPLAAKVNQRAL TGD LADLHDTVSEIQVACQSMAPSSEDRF
AVVMASFLETAQPALRALDGLQREAMEELGKALAFFGEDSKATTSEAFFGIFSEFMSKFERALSDLQAGD
GPRSSGMVSPLAW
```

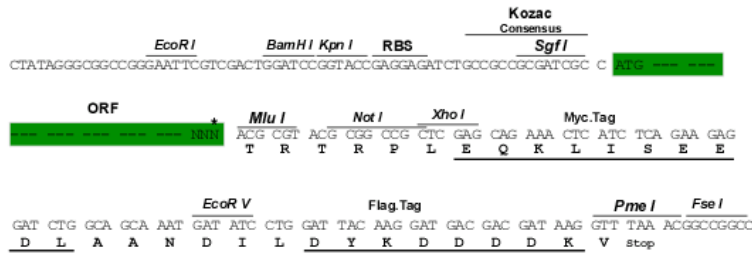
TRTRPLEQKLISEEDLAANDILDYKDDDDKV

Chromatograms: https://cdn.origene.com/chromatograms/mm9103_c04.zip

Restriction Sites: Sgfl-MluI

Cloning Scheme:

Cloning sites used for ORF Shuttling:



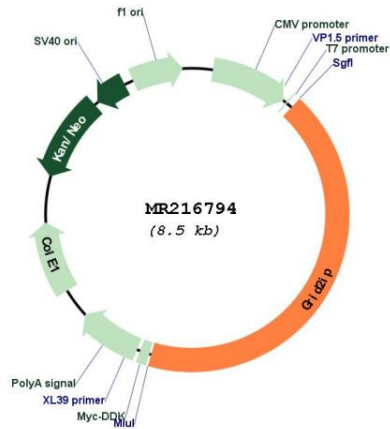
* The last codon before the Stop codon of the ORF

ACCN: NM_001159321

ORF Size: 3609 bp

OTI Disclaimer:	The molecular sequence of this clone aligns with the gene accession number as a point of reference only. However, individual transcript sequences of the same gene can differ through naturally occurring variations (e.g. polymorphisms), each with its own valid existence. This clone is substantially in agreement with the reference, but a complete review of all prevailing variants is recommended prior to use. More info
OTI Annotation:	This clone was engineered to express the complete ORF with an expression tag. Expression varies depending on the nature of the gene.
Components:	The ORF clone is ion-exchange column purified and shipped in a 2D barcoded Matrix tube containing 10ug of transfection-ready, dried plasmid DNA (reconstitute with 100 ul of water).
Reconstitution Method:	<ol style="list-style-type: none">1. Centrifuge at 5,000xg for 5min.2. Carefully open the tube and add 100ul of sterile water to dissolve the DNA.3. Close the tube and incubate for 10 minutes at room temperature.4. Briefly vortex the tube and then do a quick spin (less than 5000xg) to concentrate the liquid at the bottom.5. Store the suspended plasmid at -20°C. The DNA is stable for at least one year from date of shipping when stored at -20°C.
RefSeq:	NM_001159321.2
RefSeq Size:	3825 bp
RefSeq ORF:	3612 bp
Locus ID:	170935
UniProt ID:	Q0QWG9
Cytogenetics:	5 G2
MW:	132 kDa
Gene Summary:	Postsynaptic scaffolding protein at the Purkinje cell synapse, where it may serve to link GRID2 with actin cytoskeleton and various signaling molecules.[UniProtKB/Swiss-Prot Function]

Product images:



Circular map for MR216794