

Product datasheet for MR216731

Raly (NM_001139512) Mouse Tagged ORF Clone

Product data:

Product Type:	Expression Plasmids
Product Name:	Raly (NM_001139512) Mouse Tagged ORF Clone
Tag:	Myc-DDK
Symbol:	Raly
Synonyms:	A1663842; Merc
Mammalian Cell Selection:	Neomycin
Vector:	pCMV6-Entry (PS100001)
E. coli Selection:	Kanamycin (25 ug/mL)
ORF Nucleotide Sequence:	>MR216731 ORF sequence Red=Cloning site Blue=ORF Green=Tags(s)

TTTTGTAATACGACTCACTATAGGGCGGCCGGAATTCGTCGACTGGATCCGGTACCGAGGAGATCTGCCGCCCGCATCGCC

ATGTCCTGAAGATTCAGACCAGCAATGTAACCAACAAGAATGACCCTAAGTCCATCAACTCTCGGGTCTTCATCGGAAATCTAAACACAGCTGTGGTGAAGAAGTCAGATGTGGAGACCATCTTTCCAAGTACGGCCGAGTGGCTGGTCTGTGCACAAAGGCTATGCTTTTGTCCAGTATGCCAATGAGCGCCATGCCCGGCA GCTGTGCTGGGAGAGAATGGGCGGGTGTGGCTGGACAGACCCTGGACATCAACATGGCTGGAGAGCCCA AGCCTAATAGACCAAGGGGCTAAAGAGAGCAGCAACTGCCATCTACAGGCTGTTTGATTATCGAGGCCG CCTTCTCCAGTGCCTGTGCCAGGGCAGTTCGGTGAAGCGACCCCGTGTACAGTCCCTTTGGTTCGC CGTGTCAAACACTACGATACCTGTCAAGCTTTGCCCGCTCCACAGCTGTCACTACTGGCTCAGCCAAAA TCAAGTTAAAGAGCAGTGAGCTACAGACCATCAAACAGAGCTGACACAGATCAAGTCCAACATCGATGC CCTGTTGGGTCGCTTGGAAACAGATTGCTGAGGAACAGAAGGCCAACCAGATGGCAAGAAGAAGGGTGAC AGCAGCAGTGGTGGAGGAGGAGGAGCAGTGGTGGAGGCGGCAGTAGCAATGTTGGTGGTGGCAGCAGCG GCGGCAGCGGGAGCTGCAGCAGCAGCAGCCGGTACCAGCGCCCAAGAAGACACGGCTTCTGAGGCAGG CACACCCCAAGGAGAAGTCCAACTCGAGATGATGGTGTGAGGAGGACTGCTAACACATAGCGAGGAG GAGCTGGAGCACAGCCAGGACACAGATGCAGAAGATGGAGCCTTGACG

ACGCGTACGCGGCCGCTCGAGCAGAAACTCATCTCAGAAGAGGATCTGGCAGCAAATGATATCCTGGATTACAAGGATGACGACGATAAGGTTTAA



[View online »](#)

Protein Sequence: >MR216731 protein sequence
 Red=Cloning site Green=Tags(s)

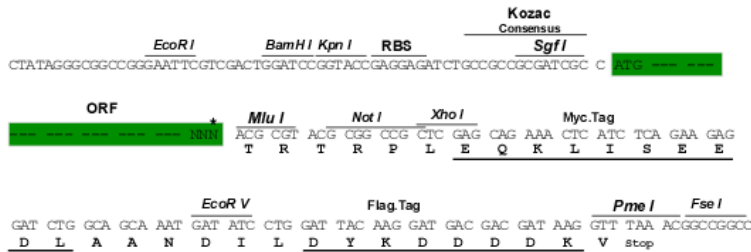
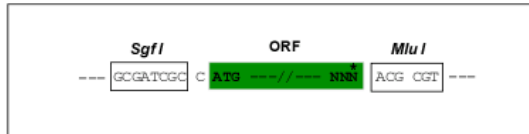
MSLKIQTSNVTNKNDPKSINSRVFIGNLNTAVVKKSDVETIFSKYGRVAGCSVHKGYAFVQYANERHARA
 AVLGENGRVLAGQTLIDINMAGEPKPNRPKGLKRAATAIYRLFYRGRSPVPVPRAVPVKRPVTVPLVR
 RVKTTIPVKLFFARSTAVTTGSAIKLKSSELQTIKTELQIKSNIDALLGRLEQIAEEQKANPDGKKKGD
 SSSGGGGSSGGGSSNVGGGSSGGSGSCSSSSRLPAPQEDTASEAGTPQGEVQTRDDGDDEEGLLTHSEE
 ELEHSQDTDAEDGALQ

TRTRPLEQKLISEEDLAANDILDYKDDDDKV

Restriction Sites: SgfI-MluI

Cloning Scheme:

Cloning sites used for ORF Shuttling:



* The last codon before the Stop codon of the ORF

ACCN: NM_001139512

ORF Size: 888 bp

OTI Disclaimer: The molecular sequence of this clone aligns with the gene accession number as a point of reference only. However, individual transcript sequences of the same gene can differ through naturally occurring variations (e.g. polymorphisms), each with its own valid existence. This clone is substantially in agreement with the reference, but a complete review of all prevailing variants is recommended prior to use. [More info](#)

OTI Annotation: This clone was engineered to express the complete ORF with an expression tag. Expression varies depending on the nature of the gene.

Components: The ORF clone is ion-exchange column purified and shipped in a 2D barcoded Matrix tube containing 10ug of transfection-ready, dried plasmid DNA (reconstitute with 100 ul of water).

Reconstitution Method:

1. Centrifuge at 5,000xg for 5min.
2. Carefully open the tube and add 100ul of sterile water to dissolve the DNA.
3. Close the tube and incubate for 10 minutes at room temperature.
4. Briefly vortex the tube and then do a quick spin (less than 5000xg) to concentrate the liquid at the bottom.
5. Store the suspended plasmid at -20°C. The DNA is stable for at least one year from date of shipping when stored at -20°C.

RefSeq: [NM_001139512.1](#), [NP_001132984.1](#)

RefSeq Size: 1477 bp

RefSeq ORF: 891 bp

Locus ID: 19383

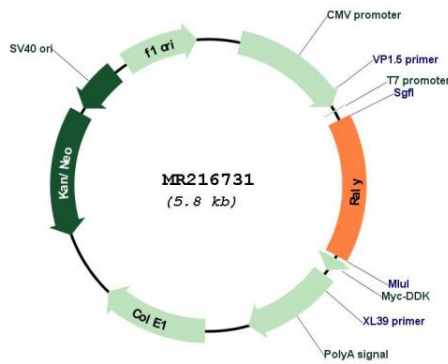
UniProt ID: [Q64012](#)

Cytogenetics: 2 76.83 cM

MW: 31.2 kDa

Gene Summary: RNA-binding protein that acts as a transcriptional cofactor for cholesterol biosynthetic genes in the liver (PubMed:27251289). Binds the lipid-responsive non-coding RNA LeXis and is required for LeXis-mediated effect on cholesterologenesis (PubMed:27251289). May be a heterogeneous nuclear ribonucleoprotein (hnRNP) (By similarity).[UniProtKB/Swiss-Prot Function]

Product images:



Circular map for MR216731