

## Product datasheet for MR216691

### Dapk1 (NM\_134062) Mouse Tagged ORF Clone

#### Product data:

Product Type:	Expression Plasmids
Product Name:	Dapk1 (NM_134062) Mouse Tagged ORF Clone
Tag:	Myc-DDK
Symbol:	Dapk1
Synonyms:	D13Ucla1; DAP-Kinase
Vector:	pCMV6-Entry (PS100001)
E. coli Selection:	Kanamycin (25 ug/mL)
Cell Selection:	Neomycin
ORF Nucleotide Sequence:	>MR216691 representing NM_134062 Red=Cloning site Blue=ORF Green=Tags(s)

TTTTGTAATACGACTCACTATAGGGCGGCCGGAATTCGTCGACTGGATCCGGTACCGAGGAGATCTGCC  
GCCGCGATCGCC

ATGACTGTGTTTCAGGCAGGAAAACGTGGACGACTACTACGACACCGGCGAGGAACTGGGCAGTGGACAGT  
TCGCAGTTGTGAAGAAATGTCGTGAGAAAAGTACCGGTCTTCAGTATGCGGCCAAGTTCATCAAGAAAAG  
GAGGACCAAGTCCAGCCGGCGGGCGGTGAGCCGGGAGGACATCGAGCGGGAGGTCAGCATCCTGAAGGAG  
ATCCGGCACCCAAATGTCATCACCTGCATGAGGTCTATGAGAACAAGACAGATGTCATTCTGATCCTGG  
AGCTTGTGTCAGGAGGTGAGCTGTTGACTTCTGGCTGAGAAGGAATCTCTGACTGAAGAGGAGGCAAC  
GGAATTCCTTAAGCAGATTCTCAGCGGCGTTTACTACCTGCACTCACTGCAGATCGCTCACTTTGACCTG  
AAGCCGAAAACATAATGCTTCTGGATAGAAAATGTGCCAAAACCTCGGATCAAGATCATAGACTTTGGCT  
TGGCCATAAAATTGACTTTGGAAATGAATCAAAAACATATTTGGGACACCAGAGTTTGTGGCTCCGGA  
GATAGTCAACTATGAGCCCTGGGTCTTGAGGCAGATATGTGGAGCATCGGGTAATAACCTATATCCTC  
CTAAGTGGGGCCTCCCTTTTCTTGAGACACCAAGCAAGAAACATTAGCGAATGTGTCGCTGTCAACT  
ACGACTTTGAGGAGGAATCTCCGGAACACCAAGTACCCTTGCCAAAGATTTTCATCAGAAGACTGCTGGT  
CAAGGATCCAAAGAAGAGGATGACAATCCAGGACAGTTTGCAGCACCCCTGGATCAAGCCTAAAGACACC  
CAACAAGCACTTAGTCGAAAAGCCTCAGCAGTAAACATGGAGAAAATCAAGAAGTTTGCAGCTCGGAAAA  
AATGGAACAATCTGTTGCTTGTATCACTGTGCCAAAGATTATCCAGGTCATTTTGTCCAGAAGTAA  
CATGAGTGTGCCAGGAGTGATGATACTCTGGATGAGGAAGACTCCTTTGTGATGAAAGCCATCATCCAT  
GCCATCAATGATGACAACGTACCCGGCCTGCAGCATCTCCTGGGCTCCTTGTCCAGCTATGACGTCAACC  
AGCCCAACAAGCATGGGACACCTCCATTACTGATTGCCGAGGCTGTGGCAACATCCAGATGTTACAGTT  
ACTCATAAAACGAGGCTCAAGGATTGACGTCCAGGATAAGGGAGGATCCAATGCCATCTACTGGGCTCT  
CGGCATGGCCATGTGGATACTTTGAAATTTCTCAATGAGAACAAATGCCCTTTGGATGTTAAAGACAAGT  
CTGGAGAGACAGCTCTTACGTGGCAGCCGCTATGGCCATGCAGATGTGGTTCAACTACTGTGCAGTTT  
TGGCTCTAATCCTGATTTCCAGGACAAGGAAGAGGAAAACCCCTTGCAGTGTGCTGCCTGGCATGGCTAT  
TACTCCGTGGCTAAAGCTCTTTGTGAAGTTGGCTGCAACGTGAATATCAAGAATCGGGAGGGAGAGACCC



[View online »](#)

CATTGCTGACGGCGTCTGCCAGGGGCTATCATGACATTGTGGAGTGTCTGGCTGAACATGGAGCTGACT  
GAATGCTTCTGACAAGGATGGACACATCGCTCTTCATCTTGTGTGAGGCGTTGTGAGATGGAAGTCATC  
AAGACCTCCTTGGCCATGGGTCTTTGTGGATTTCCAGGACAGGCATGGCAACACACCCCTGCACGTGG  
CCTGCAAAGATGGAAGCGCACCTATCGTGGTGGCCCTCTGTGAAGCCAGCTGCAATCTGGACATCTAAA  
CAAGTATGGTCCGACTCCTCTCCACCTTGACGCAACAACGGGATCCTAGATGTGGTCCGCTACCTCTGT  
TTGATGGGCGCAATGTGGAGGCTCTAACCTCGGATGGAAGACGGCCGAGGACCTCGCCAAAGGCAGAAC  
AGCACGACATGTGGCAGGGCTCCTGGCAAGACTGCGGAAGGACACACACCGAGGACTCTCATCCAGCA  
ACTCCGACCCACCCAGAATCTCCAGCCAGAATCAAGCTCAAACCTGTTTGGCCATTCTGGGATCAGGGAAA  
TCCACCTGTTGGAATCTCTCAAGTGTGGGCTGTTAAGGAGTTTCTTCAGAAGGCCGCCGCCCAGACTAT  
CCTCTACCAACTCCACCCGCTTCCACCCGTACCCCTGGCTGCTAAGCCAACAGTCTCAGTGAGCATTAA  
CAACCTGTACCCCGCTGTGAGAACGTGAGCGTAAGGAGCCGAGCATGATGTTGAGCCGGGCTCACC  
AAAGGGATGCTGGAAGTGTTCGTGGCTCCGTCTCACCACCTCCACTGCTCGACTGATGACCAGTCCACCA  
AAGCCATCGACATCCAGAATGCTTATTTGAACGGAGTTGGTGATTTTCAGTGTGTTGGGAGTTCTCTGGAAA  
CCCTGTGTAATCTGTTGCTATGACTACTTTGCTGCCAACGACCCACGTCATCCACATCATCGTTTTT  
AGTCTCGAAGAACCCTATGAGATCCAGTGAACCAAGTATTTTCTGGCTCAGTTTCTGAAGTCTCTGG  
TCCAGTTGAAGAACCCTATAGCATTGGAGGCAAGCTGAAGAACCCTCTCCGAGTTGTCTGGTGGCAAC  
ACATGCTGACATCATGAACATCCCTCGGCTGCTGGAGGCGAGTTTGGATATGACAAGGATACATCCTTG  
CTGAAAGAGATCAGAAACAGGTTCCGGAATGACCTTCAATGCTCAAAACAGCTGTTTGTCTGGATGCGAG  
GAGCGTCTGGGTCTAAGGACATTAAGGTTCTTCGGAATCACCTGCAAGAAATACGGAGCCAGATTGTCTC  
GGGGTGTTCGCCATGACTCACCTGTGCGAGAAGATCATCTCCACGCTGCCCTCTGGCGGAAGCTCAAC  
GGGCCAAACCAGTGTGTCGCTGCAGCAGTTTGTGTATGACGTGCAGGACCAGCTGAACCCCTGGCCT  
CTGAGGATGACCTCAGGCGCATTGCACAACAGCTACACAGCACGGGCGAGATAAACATCATGCAGAGTGA  
GACAGTGCAGGACGTGTTACTGCTGGATCCTCGATGGCTCTGCACCAACGCTCTGGGGAAGCTGCTGTCT  
GTGGAGACGCCCGAGCCCTGCACCATTACCGGGCCGCTACACCATGGAAGACATCCAGCGTCTGGTCC  
CAGACAGTGCAGTGGAGGAGCTGCTGCAGATACTGGATGCCATGGACATCTGCGCCCGAGACCTGAGTAG  
TGGGACTATGGTGGATATCCCTGCTGATCAAAAACAGACAGCCTGCAGCGCTCTGGGCGGATGAGGAG  
GATGAGGTGATGGTGTACGGTGGGGTGCGCATTGTCCCTGTAGAGCACCTCACCCCTTCCCCTGTGGCA  
TCTTTCACAAAGTTCAGGTCAACCTGTGCCGATGGATCCACCAGCAAAGCGGGAGGGTGTGCGGACAT  
CCGTCTGTGGGTGAGCGGCTGCAGGATCGCAACCGGGGCTGAGTTGCTGGTGTCTGGTCAATCAC  
GGTCAGGGCATCGAGGTACAGGTGCGTGGCCTGGAGACGGAGAAGATTAAGTGTGCTGCTGCTGGACT  
CGGTGTGCAGCACCATCGAGACCGTATGGCCACCACCTTGCCAGGGTGTGACGGTGAAGCACTACCT  
GAGCCCCCAGCAGCTAAGGGAGCACACGAACCGGTATGGTCTATCAGCCCCGGGACTTCTCCGTGCG  
CAGACCCTGAAAGAGAGTTCCCTTACCAACACCATGGGTGGGTACAAGGAGAGCTTCAGCAGCATACGT  
GCTTTGGGTGTCATGACGTCTACTCACAGGCCAGTCTTGGCATGGATATCCATGCGTGCAGACCTGAGTCT  
CCTGACCCGGAGGAAACTGAGTCGCTGCTTGACCCACCCGACCCATGGGGAAGGACTGGTGCCTTCTG  
GCCATGAACCTGGGCCTCCCAGACATGGTGGCCAAACACAACGTCAACAACAGGGCTTCTAGGGATTTCC  
TCCCTAGCCAGTGCATGCCTTGCTACAGGAATGGACCTCCTACCTGAGAGCACGGTGGGCATCCTTAT  
ATCAAACCTTGGGAGCTGGGGCCCGGGATGCTGCGGACTTTTACTGAAGGCCTCCTGTGTTCAG  
ATCAACCTTGTGGCAATGGCCAGGAGGCTATGCCTCAAGCTGTAAACAGTGGCAGCTCTACAATTCCA  
TTAGCTCAGTGGTGTCCCG

ACGCGTACGCGGCCGCTCGAGCAGAACTCATCTCAGAAGAGGATCTGGCAGCAATGATATCCTGGATT  
ACAAGGATGACGACGATAAGGTTTAA

Protein Sequence: >MR216691 representing NM\_134062  
 Red=Cloning site Green=Tags(s)

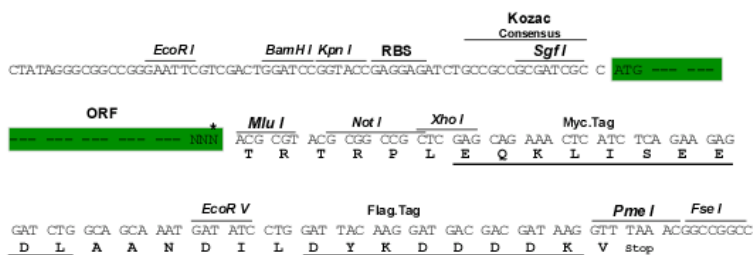
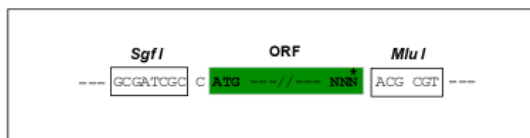
MTVFRQENVDDYYDTGEELGSGQFAVVKKCREKSTGLQYAAKFIKKRRTKSSRRGVSREDIEREVSILKE  
 IRHPNVITLHEVYENKTDVILILELVAGGELDFLAEKESL TEEEA TEFLKQILSGVYYLHSLQIAHFDL  
 KPENIMLLDRNVKPRIKIIDFGLA HKIDFGNEFKNIFGTPEFVAPEIVNYEPLGLEADMWSIGVITYIL  
 LSGASPFLGDTKQETLANVSAVNVD FEEFFRNTSTLAKDFIRRLLVKDPKRRMTIQDSLQHPWIKPKDT  
 QQALSRKASAVNMEKFKKFAARKKWKQSVRLISL CQRLSRSF LRSNMSVARSDDTLDEEDSFVMKAIH  
 AINDDNV PGLQHLLGSLSSYDVNQPNKHGTPPLLI AAGCGNIQMLQLLIKRGSRIDVQDKGGSNAIYWAS  
 RHGHVDTLKFLNENKCPLDVKDKSGETALHVAARYGHADVQLLCSFGSNPDFQDKEETPLHCAAWHGY  
 YSAKALCEVGCNVNIKNREGETPLL TASARGYHDIVECLAEHGADLNASDKDGHIALHLAVRRCQMEVI  
 KTL LGHGSFVDFQDRHGNTPLHVACKDGSAPIVVALCEASCNLDISNKYGRTPHLAANNGILDVVRVLC  
 LMGANVEALTSDGKTAEDLAKAEQHEHVAGLLARLRK DTHRGLFIQQLRPTQNLQPRIK LKLFHGSGSGK  
 STLVESLKCGLLRSFFRRRRPRLSSTNSTRFPSP LAAKPTVSVSINNL YPGCENVSRSRSMFEPGLT  
 KGMLVFVAPSHHLHCSTDDQSTKAIDIQNAYLNGV GDFSVWEFSGNPVVFCCYDYFAANDPTSIIHIVF  
 SLEEPYEIQLNQVIFWLSFLKSLVPVEEPIAFG GKKLNPLRVVLVATHADIMNIPRPAGGEFGYDKDTSL  
 LKEIRNRFGNDLHVS NKLFVLDAGASGSKDIKVL RNHLQEIRSQIVSGCSPMTHLCEKIISTLPSWRKLN  
 GPNQLMSLQQFVYDVQDQLNPLASEDDLRRIAQQ LHSTGEINIMQSETVQDVL LLDPRWLCTNVLGKLLS  
 VETPRALHHRGRYTMEDIQRLVPDSDVEELLQ ILDAMDICARDLSSGTMVDIPALIKTDSLQRSWADEE  
 DEVMVYGGVRIVPVEHLTPFPCGIFHKVQVNL CRWIHQSAEGDADIRLWVSGCRIANRGAELLVLLVNH  
 GGQIEVQVRGLETEKIKCCLLLDSVCSTIETVM ATTL PGLLTVKH YLSPQQLREHHEPVMVYQPRDFRA  
 QTLKESSTNTMGGYKESFSITCFGCHDVYSQASL GMDIHASDLSLLTRRKL SRLLDPPDPMPGKDWCLL  
 AMNLGLPDMVAKHNVNRRASRDFLPSVHALLQE WTSYPESTVGILISKRELGRRAADFLLKASSVFK  
 INLDGNGQEAYASSCNSGTSYNSISSVVS R

TRTRPLEQKLISEEDLAANDILDYKDDDDKV

Restriction Sites:  
 Cloning Scheme:

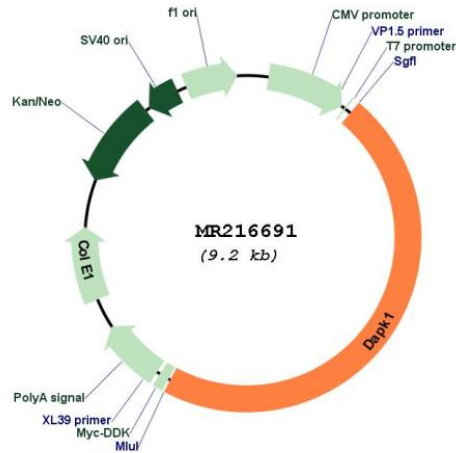
Sgfl-MluI

Cloning sites used for ORF Shuttling:



\* The last codon before the Stop codon of the ORF

Plasmid Map:



ACCN: NM\_134062

ORF Size: 4290 bp

OTI Disclaimer: The molecular sequence of this clone aligns with the gene accession number as a point of reference only. However, individual transcript sequences of the same gene can differ through naturally occurring variations (e.g. polymorphisms), each with its own valid existence. This clone is substantially in agreement with the reference, but a complete review of all prevailing variants is recommended prior to use. [More info](#)

OTI Annotation: This clone was engineered to express the complete ORF with an expression tag. Expression varies depending on the nature of the gene.

Components: The ORF clone is ion-exchange column purified and shipped in a 2D barcoded Matrix tube containing 10ug of transfection-ready, dried plasmid DNA (reconstitute with 100 ul of water).

**Reconstitution Method:**

1. Centrifuge at 5,000xg for 5min.
2. Carefully open the tube and add 100ul of sterile water to dissolve the DNA.
3. Close the tube and incubate for 10 minutes at room temperature.
4. Briefly vortex the tube and then do a quick spin (less than 5000xg) to concentrate the liquid at the bottom.
5. Store the suspended plasmid at -20°C. The DNA is stable for at least one year from date of shipping when stored at -20°C.

**RefSeq:** [NM\\_134062.2](#), [NP\\_598823.1](#)

**RefSeq Size:** 5316 bp

**RefSeq ORF:** 4293 bp

**Locus ID:** 69635

**UniProt ID:** [Q80YE7](#)

**Cytogenetics:** 13 32.53 cM

**MW:** 160.4 kDa

**Gene Summary:** Calcium/calmodulin-dependent serine/threonine kinase involved in multiple cellular signaling pathways that trigger cell survival, apoptosis, and autophagy. Regulates both type I apoptotic and type II autophagic cell deaths signal, depending on the cellular setting. The former is caspase-dependent, while the latter is caspase-independent and is characterized by the accumulation of autophagic vesicles. Phosphorylates PIN1 resulting in inhibition of its catalytic activity, nuclear localization, and cellular function. Phosphorylates TPM1, enhancing stress fiber formation in endothelial cells. Phosphorylates STX1A and significantly decreases its binding to STXBP1. Phosphorylates PRKD1 and regulates JNK signaling by binding and activating PRKD1 under oxidative stress. Phosphorylates BECN1, reducing its interaction with BCL2 and BCL2L1 and promoting the induction of autophagy. Phosphorylates TSC2, disrupting the TSC1-TSC2 complex and stimulating mTORC1 activity in a growth factor-dependent pathway. Phosphorylates RPS6, MYL9 and DAPK3 (By similarity). Acts as a signaling amplifier of NMDA receptors at extrasynaptic sites for mediating brain damage in stroke. Cerebral ischemia recruits DAPK1 into the NMDA receptor complex and it phosphorylates GRINB at Ser-1303 inducing injurious Ca(2+) influx through NMDA receptor channels, resulting in an irreversible neuronal death. Required together with DAPK3 for phosphorylation of RPL13A upon interferon-gamma activation which is causing RPL13A involvement in transcript-selective translation inhibition.[UniProtKB/Swiss-Prot Function]