

## Product datasheet for MR216672

### Rab37 (NM\_021411) Mouse Tagged ORF Clone

#### Product data:

Product Type:	Expression Plasmids
Product Name:	Rab37 (NM_021411) Mouse Tagged ORF Clone
Tag:	Myc-DDK
Symbol:	Rab37
Synonyms:	B230331O03Rik; B230354I04Rik
Mammalian Cell Selection:	Neomycin
Vector:	pCMV6-Entry (PS100001)
E. coli Selection:	Kanamycin (25 ug/mL)
ORF Nucleotide Sequence:	>MR216672 ORF sequence Red=Cloning site Blue=ORF Green=Tags(s)

TTTTGTAATACGACTCACTATAGGGCGGCCGGAATTCGTCGACTGGATCCGGTACCGAGGAGATCTGCC  
GCC**CGATCGCC**

ATGACTGGCACACCAGGAGCTGCTACCGCTGGGGATGGCGAGGCCCTGAGCGCTCCCCGCCCTTCAGCC  
CGAACTACGATCTCACCGCAAGGTGATGCTTCTTGGAGACTCGGGCGTCGGCAAACCTGTTTCCTGAT  
CCAATTCAAAGACGGGGCCTTCTGTCCGGAACCTTCATAGCCACCGTCGGCATAGACTTCAGGAATAAA  
GTGGTGACAGTGGATGGTGCCAGGGTGAAGCTTCAGATCTGGGACTGCAGGACAGGAGCGCTTCGCA  
GTGTGACCATGCTTATTACCGAGATGCTCAGGCTTTGCTCCTGTGTATGACATCACCAACCAGTCCTC  
TTTTGACAACATCAGGGCCTGGCTCACAGAGATTCATGAGTATGCCAGAGAGACGTGGTGATTATGCTT  
CTAGGCAACAAGGCCGATGTAAGCAGCGAAAGGTGATCCGTTCTGAAGATGGAGAGACTGGCCAGGG  
AATATGGTGTTCTTTTCATGGAGACCAGTGCCAAGACTGGCATGAACGTGGAGTTGGCCTTTCTGGCAAT  
TGCCAAGGAACTGAAATACCGTGCAGGGAGGCAGCCTGATGAGCCAGCTTCCAGATCCGAGACTATGTG  
GAGTCCCAGAAGAAGCGCTCCAGCTGCTGCTCCTTTGTG

**ACGCGT**ACGCGGGCGCTCGAGCAGAACTCATCTCAGAAGAGGATCTGGCAGCAAATGATATCCTGGATT  
ACAAGGATGACGACGATAAGGTTTAA



[View online »](#)

**Protein Sequence:** >MR216672 protein sequence  
 Red=Cloning site Green=Tags(s)

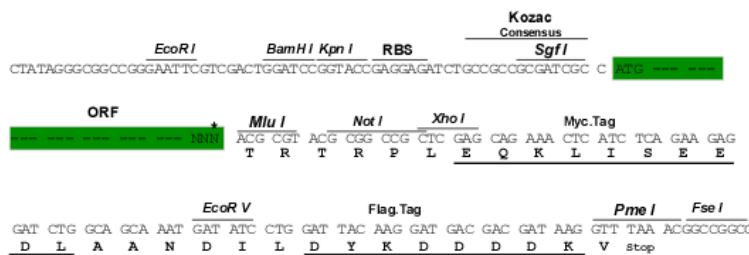
MTGTPGAATAGDGEAPERSPPFSPNYDLTGKVMLLGDGSGVKTCFLIQFKDGAFLSGTFIATVGDIFRNK  
 VVTVDGARVKLQIWDTAGQERFRSVTHAYYRDAQALLLYDITNQSSFDNIRAWLTEIHEYAQRDVVIML  
 LGNKADYSSERVISEDGETLAREYGVPFMETSAKTGMNVELAFLAIKELKYRAGRQPDEPSFQIRDYV  
 ESQKKRSSCCSFV

TRTRPLEQKLISEEDLAANDILDYKDDDDKV

**Restriction Sites:** SgfI-MluI

**Cloning Scheme:**

Cloning sites used for ORF Shuttling:



\* The last codon before the Stop codon of the ORF

**ACCN:** NM\_021411

**ORF Size:** 672 bp

**OTI Disclaimer:** The molecular sequence of this clone aligns with the gene accession number as a point of reference only. However, individual transcript sequences of the same gene can differ through naturally occurring variations (e.g. polymorphisms), each with its own valid existence. This clone is substantially in agreement with the reference, but a complete review of all prevailing variants is recommended prior to use. [More info](#)

**OTI Annotation:** This clone was engineered to express the complete ORF with an expression tag. Expression varies depending on the nature of the gene.

**Components:** The ORF clone is ion-exchange column purified and shipped in a 2D barcoded Matrix tube containing 10ug of transfection-ready, dried plasmid DNA (reconstitute with 100 ul of water).

**Reconstitution Method:**

1. Centrifuge at 5,000xg for 5min.
2. Carefully open the tube and add 100ul of sterile water to dissolve the DNA.
3. Close the tube and incubate for 10 minutes at room temperature.
4. Briefly vortex the tube and then do a quick spin (less than 5000xg) to concentrate the liquid at the bottom.
5. Store the suspended plasmid at -20°C. The DNA is stable for at least one year from date of shipping when stored at -20°C.

**RefSeq:** [NM\\_021411.4](#), [NP\\_067386.3](#)

**RefSeq Size:** 2193 bp

**RefSeq ORF:** 672 bp

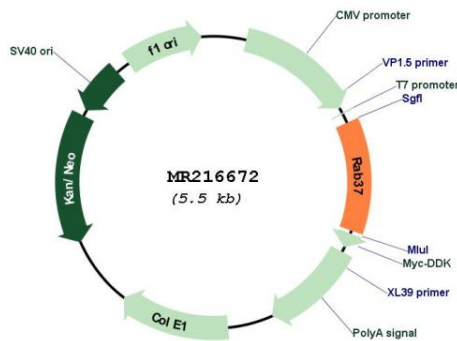
**Locus ID:** 58222

**UniProt ID:** [Q9JKM7](#)

**Cytogenetics:** 11 E2

**MW:** 24.7 kDa

**Product images:**



Circular map for MR216672