

## Product datasheet for MR216659

### Ppie (NM\_019489) Mouse Tagged ORF Clone

#### Product data:

**Product Type:** Expression Plasmids  
**Product Name:** Ppie (NM\_019489) Mouse Tagged ORF Clone  
**Tag:** Myc-DDK  
**Symbol:** Ppie  
**Synonyms:** 2010010D16Rik; Cyp33  
**Mammalian Cell Selection:** Neomycin  
**Vector:** pCMV6-Entry (PS100001)  
**E. coli Selection:** Kanamycin (25 ug/mL)  
**ORF Nucleotide Sequence:** >MR216659 representing NM\_019489  
 Red=Cloning site Blue=ORF Green=Tags(s)

TTTTGTAATACGACTCACTATAGGGCGGCCGGAATTCGTCGACTGGATCCGGTACCGAGGAGATCTGCC  
 GCC**CGATCGCC**

ATGGCCACCACCAAGCGTGTGCTGTACGTGGGCGGGCTGGCAGAAGAGGTGGACGACAAGGTTCTTCATG  
 CTGCATTTATCCCCTTTGGAGACATCACAGATTTCAAATTCCTCTGGACTATGAAACAGAAAAACCCG  
 AGGTTTGGCTTTTGTGAGTTTGGAGTTGGCAGAGGATGCGGCAGCAGCTATCGACAACATGAATGAATCT  
 GAGCTCTTTGGACGGACGATTTCGTGTCAATTTGGCCAAGCCAATGAGAATTAAGAGGGCTCTCCAGGC  
 CAGTCTGGTCAGATGATGACTGGTTGAAGAAGTTTCTGGGAAGACTCTTGAGGAGAATAAGGAAGAAGA  
 AGGACCCGAGCCTCCCAAAGCTGAAGCCCAGGAGGGAGAGCCCACTGCAAAAAAGCCCGGTCAAATCCT  
 CAGGTGTACATGGACATCAAGATTGGGAACAAGCCAGCAGGCCGCATTACAGATGCTCCTACGGTCTGATG  
 TGGTGCCCATGACCGCAGAAAACCTCCGCTGCCTGTGCACCCATGAAAAGGGCTTTGGCTTCAAGGGAAG  
 CAGCTTCCACCGCATCATCCCCAGTTCATGTGTGAGGTGGTGATTTCAAAACCACAATGGCACAGGG  
 GGCAAGTCCATCTATGGGAAGAAGTTTGTGATGAAAACCTCATCCTTAAACACACAGGACCAGGCCCTCC  
 TCTCCATGGCCAATTCTGGCCGAACACCAACGGCTCCAGTTCCTCCTGACCTGTGATAAGACAGATTG  
 GCTGGACGGCAAGCATGTGGTATTTGGGAGGTACGGAAGGCCCTGGATGCTTTCGGGCAGATCGAGGCT  
 CAGGGCAGCAAGGATGGGAAGCCAAAGCAGAAGGTGATGATTGCCGACTGTGGAGAGTACATG

**ACGCGT**ACGCGGCCGCTCGAGCAGAAAACCTCATCTCAGAAGAGGATCTGGCAGCAAATGATATCCTGGATT  
 ACAAGGATGACGACGATAAGGTTTAA



[View online »](#)

**Protein Sequence:** >MR216659 representing NM\_019489  
Red=Cloning site Green=Tags(s)

MATTKRVLYVGGLAEEVDDKVLHAAFIPFGDITDIQIPLDYETEKHRGFVFEFELAEDAAAAIDNMNES  
 ELFGRTIRVNLAKPMRIKEGSSRPVWSDDDWLKKFSGKLEENKEEEGPEPPKAEAQEGEPTAKKARSNP  
 QVYMDIKIGNKPAGRIQMLLRSDVVPMTAENFRCLCTHEKGFVKGSSFHRIIPQFMCQGGDFTNHNGTG  
 GKSIYGGKFDDEFILKHTGPGLLSMANS GPNTNGSQFFLTCDKTDWLDGKHVVFEVTEGLDVLRLQIEA  
 QGSKDGKPKQKVM IADCGEYM

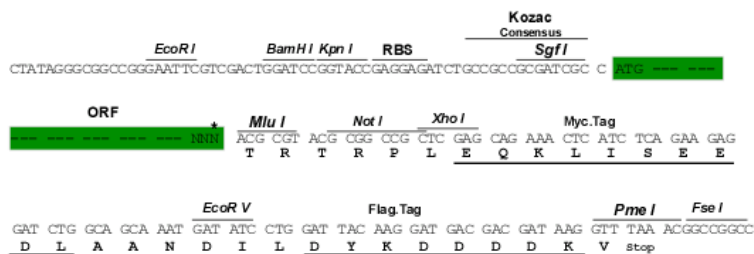
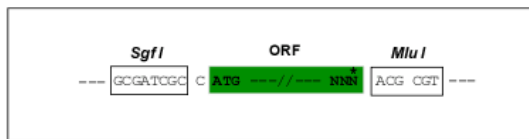
TRTRPLEQKLISEEDLAANDILDYKDDDDKV

**Chromatograms:** [https://cdn.origene.com/chromatograms/mm9059\\_b02.zip](https://cdn.origene.com/chromatograms/mm9059_b02.zip)

**Restriction Sites:** SgfI-MluI

**Cloning Scheme:**

Cloning sites used for ORF Shuttling:



\* The last codon before the Stop codon of the ORF

**ACCN:** NM\_019489

**ORF Size:** 903 bp

**OTI Disclaimer:** The molecular sequence of this clone aligns with the gene accession number as a point of reference only. However, individual transcript sequences of the same gene can differ through naturally occurring variations (e.g. polymorphisms), each with its own valid existence. This clone is substantially in agreement with the reference, but a complete review of all prevailing variants is recommended prior to use. [More info](#)

**OTI Annotation:** This clone was engineered to express the complete ORF with an expression tag. Expression varies depending on the nature of the gene.

**Components:** The ORF clone is ion-exchange column purified and shipped in a 2D barcoded Matrix tube containing 10ug of transfection-ready, dried plasmid DNA (reconstitute with 100 ul of water).

**Reconstitution Method:**

1. Centrifuge at 5,000xg for 5min.
2. Carefully open the tube and add 100ul of sterile water to dissolve the DNA.
3. Close the tube and incubate for 10 minutes at room temperature.
4. Briefly vortex the tube and then do a quick spin (less than 5000xg) to concentrate the liquid at the bottom.
5. Store the suspended plasmid at -20°C. The DNA is stable for at least one year from date of shipping when stored at -20°C.

**RefSeq:** [NM\\_019489.6](#)

**RefSeq Size:** 1168 bp

**RefSeq ORF:** 906 bp

**Locus ID:** 56031

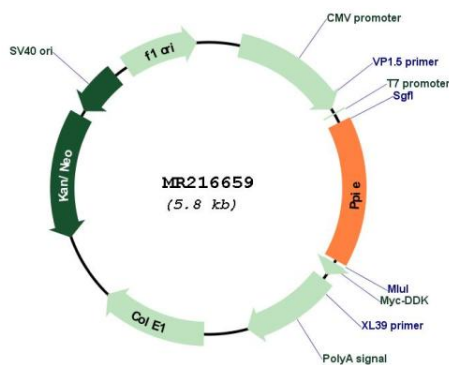
**UniProt ID:** [Q9QZH3](#)

**Cytogenetics:** 4 D2.2

**MW:** 33.4 kDa

**Gene Summary:** Involved in pre-mRNA splicing as component of the spliceosome. Combines RNA-binding and PPIase activities. Binds mRNA and has a preference for single-stranded RNA molecules with poly-A and poly-U stretches, suggesting it binds to the poly(A)-region in the 3' UTR of mRNA molecules. Catalyzes the cis-trans isomerization of proline imidic peptide bonds in proteins. Inhibits KMT2A activity; this requires proline isomerase activity.[UniProtKB/Swiss-Prot Function]

**Product images:**



Circular map for MR216659