

Product datasheet for **MR216651**

UbqInl (NM_198624) Mouse Tagged ORF Clone

Product data:

Product Type:	Expression Plasmids
Product Name:	UbqInl (NM_198624) Mouse Tagged ORF Clone
Tag:	Myc-DDK
Symbol:	UbqInl
Synonyms:	4922504M18Rik; Gm490
Mammalian Cell Selection:	Neomycin
Vector:	pCMV6-Entry (PS100001)
E. coli Selection:	Kanamycin (25 ug/mL)



[View online »](#)

ORF Nucleotide Sequence:

>MR216651 representing NM_198624
 Red=Cloning site Blue=ORF Green=Tags(s)

TTTTGTAATACGACTCACTATAGGGCGGCCGGAATTCGTCGACTGGATCCGGTACCGAGGAGATCTGCC
 GCC**CGGATCGCC**

ATGCCCGTATTATCTCTCGATCACCTAAGATGCCCCAGAGCAGGTATACAGCAGGTGTGCCTGCAGATG
 GGAAGATCTCTCCAGGTGTCATTTCGAGTGATTGTGAAGACTCCAGGCAACCAGATCATCTTTACAGTAGC
 TGATGACACCTTAGTGAGGCAGTTCAAGGAGATTCTGTCTGCTCACTTCAAATGCCAAATGGAACAACCTG
 GACTGGTCTTTATGGGCCGCTTCTCAAAGACCATGACACATTGAGCCAGAGGGGCATCACAGATGGCC
 ACATTATCCATGTGGTCAAGTCCAAGCATGGCCCCAGATCCCTGGCTCACTCTTCCGGAACCTGGT
 AACCAACAATCCCTGCCATCAAGACAGGAACCTAAAGGAAATAGCAGCATGGTGTGCCAATCTGCAGGC
 ATGAATGAACTAAAGTGGAGTCATCTTCTCATGGAGCCAGAGGCACCCAAGTGGTACTGAAAGCC
 CAGAAGTGGTAGTCTAGAACATATTGCACAGGTCTGGAGAATCTTTGTGTCCAGAGTCTGCTGTCTAA
 TATGGACTTCGTGCATCAGATGCCTCCAGAACAACCATATATGGAAGAACTGATACAGCAGAACCAGAA
 GTTCCCATCTTCTTGACAATTCTGAGATCCTATGCCAGACTCTGGAGCTGGTCAGGCACCTTGCCATCA
 TCCAAGAGATAATGCAGATCCAGCAGCCAGCACAGAACCCTGAGTATCCACCAAACCTCACAGCCATTCTT
 GGGTTTAGAAACAGTTCCAAATGGGAACAATCACCTGGGCCAGAGTTATGTCAATAACAACGATCATATG
 CTCAATGGTGTGCCTGATCTTTTGGAGGGCAACTGTTTTACAGCTCTTCTGGATGAACAAGTACTAGAAC
 AAGTCCAGACTCCTTCTCTATCTCAACCATTACCTCAAGAACAATGGGACCAGCTCTCTTCTTCCCAAGT
 AATTTATGCAAATCTTGTGGATTATCATCAATCACCCCAACAATGCTACTCCAATCACACCAACAAT
 GTTCCAGGAAAATCCAGCCATAGTTGCCACCCAGGGCCAAAGCAATGTCTGCGCTGTTCCAGCAGCCAG
 CTGAGATTCCAGTCTTACCAACCATATCAATCAACCAGAAGCCTCAAGTTGATAAGGATACTACCATCAC
 TCTAGGTATCTCTGACCAGTGGTTAGAGGAAGATCTCCAGCAGTCTGATGACCAGACCAGTTCTCAGATC
 ACAGGAGGCATGATCCAGTTGCTTAGAAACCACCCACAATGGCAGCTCAGATGCTGCTGCTCATGAATA
 CGTCCCAACTGAATGAGCAGTGGAGGCAGGAACTCCACACCCTTGCAGTCATCACAGCTCCATGACTT
 GCTTTTAGCCCTAGCCAACCCCAAAACATCACAAGCATTATTACAAATTGAGCATGGTCTGCAGCTATTG
 GCTACAGAGGCTCCTGCCCTTTTGCCTACATTGAACCTACCTATGGGGTCTAGTTGGCTTATTCCTT
 CCATCTGTAGCTACCCTGATATAGTGCCTGGACCTGGAATGTGCAAGACATGGCTGAGCCTCAGTGCC
 TGAAAGCTGCCACAAATCTGAAACAGTCTTTCAGAAAGTACAGCCCCGCTGGAGACCTTCCCATTCC
 CTACAAGCCCCGGAGTTCGTTTCAGCAAAGAGATGGAATGTCTCCAGGCCATGGGATTTGTGAATTATA
 ATGCCAACCTGCAAGCGCTCATAGCTACTGATGGTGACACTAATGCTGCTATTTATAAGCTCAAGAGTTC
 TCAGGGATTC

ACGCGTACGCGGCCGCTCGAGCAGAAACTCATCTCAGAAGAGGATCTGGCAGCAAATGATATCCTGGATT
 ACAAGGATGACGACGATAAGGTTTAA

Protein Sequence:

>MR216651 representing NM_198624
 Red=Cloning site Green=Tags(s)

MPRIISRSPKMPQSRYTAGVPADGKISPGVIRVIVKTPGNQIIFTVADDTLVRQFKEILSAHFKCQMEQL
 VLVFMGRLLKDHDLSQRGITDGHIIHVVIKSKHGPRSLAHSFRNLVTNNPCHQDRNPKGNSSMVCQSAG
 MNETKVESLLMEPEAPKVGTESPEVGSLEHIAQVLENLCVQSLLSNMDFVHQMPPEQPMEELIQQNPE
 VSHLLDNSEILCQTELEVRHLAIIQEIMQIQQPAQNPEYPPNSQPFLGLETVPNGNHLGQSYVNNNDHM
 LNGVPDLLEGNCFTALLDEQVLEQVQTPSLSQPLPQEQWDQLSSQVIYANSCGLSSITPTNATPNHTNN
 VSRENPAIVATQGSQSNVCAVQPAEIPVLPITISINQPKQVDKDTITLGISDQWLEEDLQQSDDQTSSQI
 TGGMIQLLRNHPQMAAQMLLLMNTSQLNEQWRQETPTPLQSSQLHDLLLALANPKTSQALLQIEHGLQLL
 ATEAPALLPYIEPYLWGLGWLIPSICSYDPDIPWTVWVQDMAEPQCPESCHKSETVLQKVQPPSGDPSHS
 LQAPEVRFKEMECLQAMGFVNYNANLQALIA TDGDTNAAIYKLSQGF

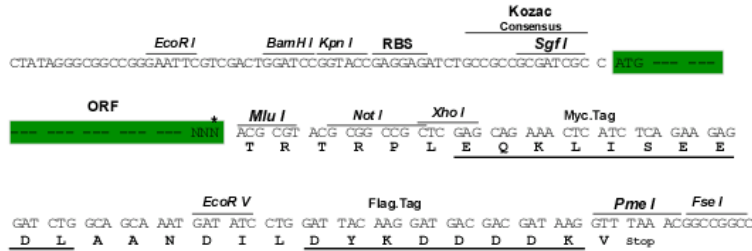
TRTRPLEQKLISEEDLAANDILDYKDDDDKV

Chromatograms: https://cdn.origene.com/chromatograms/mm9045_c06.zip

Restriction Sites: SgfI-MluI

Cloning Scheme:

Cloning sites used for ORF Shuttling:



* The last codon before the Stop codon of the ORF

ACCN: NM_198624

ORF Size: 1830 bp

OTI Disclaimer: The molecular sequence of this clone aligns with the gene accession number as a point of reference only. However, individual transcript sequences of the same gene can differ through naturally occurring variations (e.g. polymorphisms), each with its own valid existence. This clone is substantially in agreement with the reference, but a complete review of all prevailing variants is recommended prior to use. [More info](#)

OTI Annotation: This clone was engineered to express the complete ORF with an expression tag. Expression varies depending on the nature of the gene.

Components: The ORF clone is ion-exchange column purified and shipped in a 2D barcoded Matrix tube containing 10ug of transfection-ready, dried plasmid DNA (reconstitute with 100 ul of water).

Reconstitution Method:

1. Centrifuge at 5,000xg for 5min.
2. Carefully open the tube and add 100ul of sterile water to dissolve the DNA.
3. Close the tube and incubate for 10 minutes at room temperature.
4. Briefly vortex the tube and then do a quick spin (less than 5000xg) to concentrate the liquid at the bottom.
5. Store the suspended plasmid at -20°C. The DNA is stable for at least one year from date of shipping when stored at -20°C.

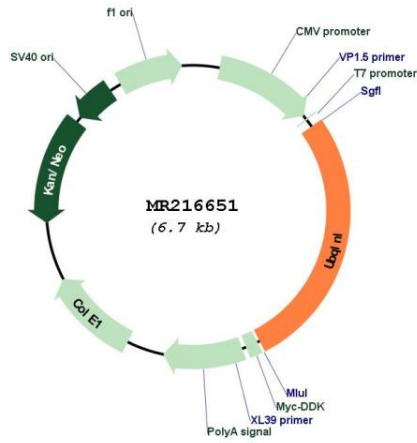
RefSeq: [NM_198624.3](#), [NP_941026.2](#)

RefSeq Size: 2298 bp

RefSeq ORF: 1833 bp

Locus ID: 244179
 UniProt ID: [Q14DL0](#)
 Cytogenetics: 7 E3
 MW: 68 kDa

Product images:



Circular map for MR216651