

Product datasheet for MR216614

Hs1bp3 (NM_021429) Mouse Tagged ORF Clone

Product data:

Product Type:	Expression Plasmids
Product Name:	Hs1bp3 (NM_021429) Mouse Tagged ORF Clone
Tag:	Myc-DDK
Symbol:	Hs1bp3
Mammalian Cell Selection:	Neomycin
Vector:	pCMV6-Entry (PS100001)
E. coli Selection:	Kanamycin (25 ug/mL)
ORF Nucleotide Sequence:	>MR216614 representing NM_021429 Red=Cloning site Blue=ORF Green=Tags(s)

TTTTGTAATACGACTCACTATAGGGCGGCCGGAATTCGTCGACTGGATCCGGTACCGAGGAGATCTGCC
GCCCGATCGCC

ATGCAGTCCCCGGCGGTGCTCCGCACCTCCAGACAAGTTCAGAATGCACACACAGGCCTCGACTGTCTG
TCCCACAGCACCAGGAGGTGCGGGTAAGATGATGTCCGGCCATGTGGAGTACCAGATCCTAGTGGTGC
CCGTTGGCTGTGTTCAAGTCAGCAAGCACCGGCCCAAGATGTCGTCCAGTCTTTGGTCTCTAAAAA
TACAGCGAGATCGAGGAGTTTTACCAGAAGCTGTACAGTTGTTACCCAGCAGCCAGCCTGCCCGTGC
CTAGGAAGTCTGTGTTGTCGGGAGTCTGACATCCGGGAGAGGCCATGTTTGTAGATGAGTCCCTACG
CTGTGTCTCCAAGGATGCCAGTTGGCAGGCAGCCAGAGCTGCTAGAATTCCTAGGCACCAGAGCCCA
GGGGCTACGGCCTTGCCACCCGAGATCCCTCTGTCTTGGATGACACAGCCAGCCAGCCAGGGACAGTG
ATGAGGCTTTTGACTTCTTTGAGCAGCAGGATGAAGTGCAGCCACCCACTGGCCTGAGCAGCAAGGA
TGTGGAGAAGTCCTTGGTGGGAGAAGAGGAGGAGGAGGAGGAGGAGGAGGAGGAGGAGGAGGAGGAGTGGATCCCCTGGGT
ATCATGCGCTCCAAGAAGCCCAAGAAACGCCAGAAAGTGGCCGTGAGGCCAAGCCTGCACCTCGGCTCA
CCATCTTTGATGAGGAGGTAGACCCTGACGCGGGCTCTTCAGCTCAGACAAGAAGGTGTCTGAGACCCG
GAGACCCTGGAGACCACAGGACTCCCTGAAGCTGTTTGTAGACCCTGACCTTGGCGGGGCTGTCTCC
CTGGGTGACCCTCTACTGCTGCCTGCTGCCAGTGAGAGCAGAGGGCCACATCCCAGCCAGAACACGGGG
ATGCCTCAAGGAGCTGTTCCAGAGTTGAAGAGGACCTGGACCTGATTCTGAACCTGGGATCTGAACCAA
GCCAAGCCCCAGACTAAGCCCAAGCCTCTAGTCCCAGCTAAGCCAGCATTGCCAGGAAACCAACTCTG
CCCGCATCAGTGGGCCCTCAGAACCTGGGTCTGGACCGAGAAGCAGCAACAGATCCAAGCTATGGATG
AAATGGACATCTTGACATATCCGGGACCATGACACACTTGCCCAAGACTCCCCAGCCTCTTC

ACGCGTACGCGGGCCGCTCGAGCAGAAACTCATCTCAGAAGAGGATCTGGCAGCAATGATATCCTGGATT
ACAAGGATGACGACGATAAAGTTTAA



[View online »](#)

Protein Sequence: >MR216614 representing NM_021429
 Red=Cloning site Green=Tags(s)

MQSPAVLRTSRQVQNAHTGLDLVSPQHVEVRGKMMSGHVEYQILVVTRLAVFKSAKHPEDVVQFLVSKK
 YSEIEEFYQKLYSCYPAASLPLPRKVLVFGESDIRRRAMFDEILRCVSKDAQLAGSPELLEFLGTRAP
 GATGLATRDPVLDLDTASQPGDSDEAFDFEQQDEVQPPTLGLSSKDVEKSLVGEIEIEIEVLDPLG
 IMRSKKPKRPEVAVRPPKAPRLTIFDEEVDPDAGLFSSDKKVSERTRPLETTQDSLKLFDDPDLGGAVS
 LGDPLLLPAASESRGPTSRPEHGDASKELFRVEEDLDLILNLGSEPKPKPQTKPKPLVPAKPALPRKPTL
 PASVGPSEPGSGPQKQQQIQAMDEMDILQYIRDHDTLAQDPSPLF

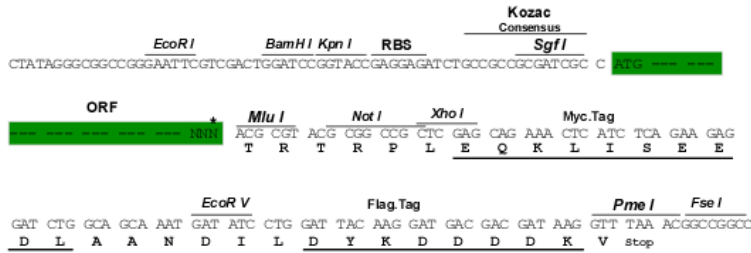
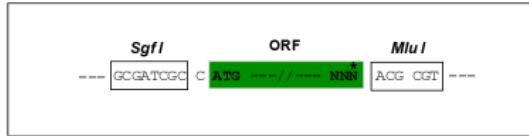
TRTRPLEQKLISEEDLAANDILDYKDDDDKV

Chromatograms: https://cdn.origene.com/chromatograms/mm9077_b04.zip

Restriction Sites: SgfI-MluI

Cloning Scheme:

Cloning sites used for ORF Shuttling:



* The last codon before the Stop codon of the ORF

ACCN: NM_021429

ORF Size: 1188 bp

OTI Disclaimer: The molecular sequence of this clone aligns with the gene accession number as a point of reference only. However, individual transcript sequences of the same gene can differ through naturally occurring variations (e.g. polymorphisms), each with its own valid existence. This clone is substantially in agreement with the reference, but a complete review of all prevailing variants is recommended prior to use. [More info](#)

OTI Annotation: This clone was engineered to express the complete ORF with an expression tag. Expression varies depending on the nature of the gene.

Components: The ORF clone is ion-exchange column purified and shipped in a 2D barcoded Matrix tube containing 10ug of transfection-ready, dried plasmid DNA (reconstitute with 100 ul of water).

Reconstitution Method:

1. Centrifuge at 5,000xg for 5min.
2. Carefully open the tube and add 100ul of sterile water to dissolve the DNA.
3. Close the tube and incubate for 10 minutes at room temperature.
4. Briefly vortex the tube and then do a quick spin (less than 5000xg) to concentrate the liquid at the bottom.
5. Store the suspended plasmid at -20°C. The DNA is stable for at least one year from date of shipping when stored at -20°C.

RefSeq: [NM_021429.3](#), [NP_067404.2](#)

RefSeq Size: 2958 bp

RefSeq ORF: 1188 bp

Locus ID: 58240

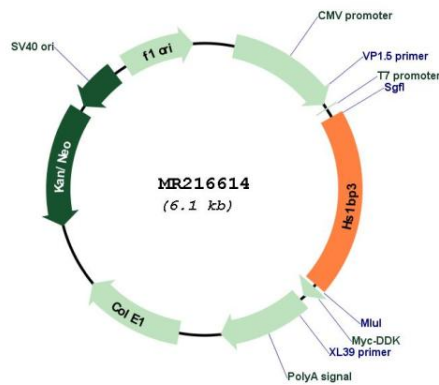
UniProt ID: [Q3TC93](#)

Cytogenetics: 12 A1.1

MW: 43.7 kDa

Gene Summary: May be a modulator of IL-2 signaling.[UniProtKB/Swiss-Prot Function]

Product images:



Circular map for MR216614