

## Product datasheet for **MR216574**

### March2 (NM\_145486) Mouse Tagged ORF Clone

#### Product data:

**Product Type:** Expression Plasmids  
**Product Name:** March2 (NM\_145486) Mouse Tagged ORF Clone  
**Tag:** Myc-DDK  
**Symbol:** March2  
**Synonyms:** 9530046H09Rik; MARCH-II  
**Mammalian Cell Selection:** Neomycin  
**Vector:** pCMV6-Entry (PS100001)  
**E. coli Selection:** Kanamycin (25 ug/mL)  
**ORF Nucleotide Sequence:** >MR216574 ORF sequence  
 Red=Cloning site Blue=ORF Green=Tags(s)

TTTTGTAATACGACTCACTATAGGGCGCCGGGAATTCGTCGACTGGATCCGGTACCGAGGAGATCTGCC  
 GCC**CGCATCGCC**

ATGACGACAGGTGACTGTTGCCACCTCCCTGGCTCCCTATGTGACTGTTGAGCAGCCCTGCCTTTTCCA  
 AGGTTGTAGAGGCCACAGGGCTTGGCCACCTCAATATGTAGCACAAGTGACTTCACGGGATGGCCGGCT  
 GCTCTCAACTGTCATCCGGGCTTTGGATTCACAGAGTGACTGTCCCTTCTGCCGAATCTGCCACGAGGGA  
 GCAAATGGGAGAAGTTGCTGTCCCATGTGGCTGCACGGGCACACTGGGAGCTGTGCACAAGAGCTGCC  
 TGGAGAAATGGCTGTCTTCTCCAACACCAGCTACTGTGAGCTGTGTCACTGAGTTTGCAGTGGAAAA  
 GCGGCCCGACCTCTCACAGAGTGGCTAAAGGACCCAGGCGCCGCACTGAGAAGCGAAGACTGTGCTGT  
 GACATGGTGTGCTTTGTGTTTCATCACACCACTGGCTGCCATCTCAGGCTGGCTTTGCCTGCGAGGGGCC  
 AGGACCACCTCCGTCTGCATAGCCGGCTGGAAGCTGTAGGTCTCATTGCCCTCACCATCGCCCTCTTTAC  
 CATCTATGTGCTCTGGACACTGGTCTTTCCGATACCATTGCCAGCTGTACTCGGAATGGAGGAAGACA  
 AATCAGAAAGTCCGCCTGAAGATTCGGGAAGCAGATGGCTCCGAGGATCCACATCACTCCTTGCTGGCTA  
 CTGGACTCTTAAAAAAGCTTCAGAGATTCAGTCCATTATCATTAAAGCAAGAGCATGGCAGCATCCAGGG  
 AGGCATGGTGCAGGTGGAGCTGAGAGTTCTGCATCTTCGTCATAAAGGAGGCTAGTGAAGACTGACTCCC  
 AGGCATCTAGGTCAAGTGCAT

**ACGCGT**ACGCGGGCCGCTCGAGCAGAAACTCATCTCAGAAGAGGATCTGGCAGCAAATGATATCCTGGATT  
 ACAAGGATGACGACGATAAGGTTTAA



[View online »](#)

**Protein Sequence:** >MR216574 protein sequence  
Red=Cloning site Green=Tags(s)

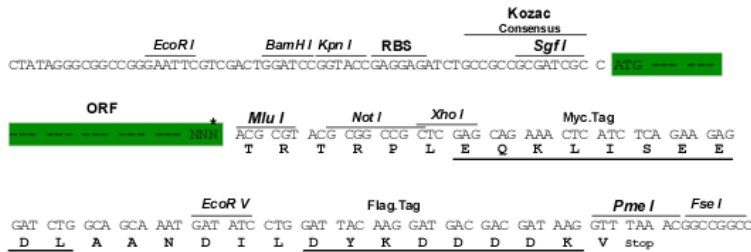
MTTGDCCHLPGSLCDCSSPAFSKVVVEATGLGPPQYVAQVTSRDGRLSTVIRALDSQSDCPFCRICHEG  
 ANGENLLSPCGCTGTLGAVHKSCLEKWLSSNNTSYCELCHTEFAVEKRPRPLTEWLKDPGRTEKRTLCC  
 DMVCFVFITPLAAISGWLCLRGAQDHLRLHSRLEAVGLIALTIALFTIYVLWTLVSFRYHCQLYSEWRKT  
 NQKVRLKIREADGSEDPHHSLLATGLLKKLQRF SPLSLRQEHGSIQGGMVQVELRVLHLRLKEASGRLTP  
 RHLGQVH

TRTRPLEQKLISEEDLAANDILDYKDDDDKV

**Restriction Sites:** SgfI-MluI

**Cloning Scheme:**

Cloning sites used for ORF Shuttling:



\* The last codon before the Stop codon of the ORF

**ACCN:** NM\_145486

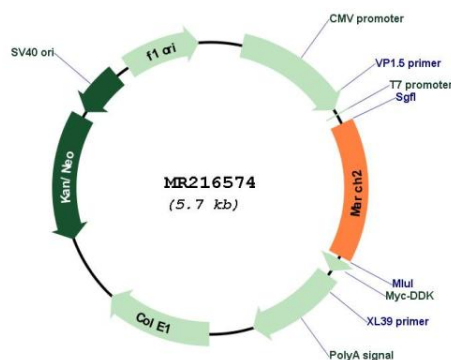
**ORF Size:** 864 bp

**OTI Disclaimer:** Due to the inherent nature of this plasmid, standard methods to replicate additional amounts of DNA in E. coli are highly likely to result in mutations and/or rearrangements. Therefore, OriGene does not guarantee the capability to replicate this plasmid DNA. Additional amounts of DNA can be purchased from OriGene with batch-specific, full-sequence verification at a reduced cost. Please contact our customer care team at [custsupport@origene.com](mailto:custsupport@origene.com) or by calling 301.340.3188 option 3 for pricing and delivery.

The molecular sequence of this clone aligns with the gene accession number as a point of reference only. However, individual transcript sequences of the same gene can differ through naturally occurring variations (e.g. polymorphisms), each with its own valid existence. This clone is substantially in agreement with the reference, but a complete review of all prevailing variants is recommended prior to use. [More info](#)

**OTI Annotation:** This clone was engineered to express the complete ORF with an expression tag. Expression varies depending on the nature of the gene.

<b>Components:</b>	The ORF clone is ion-exchange column purified and shipped in a 2D barcoded Matrix tube containing 10ug of transfection-ready, dried plasmid DNA (reconstitute with 100 ul of water).
<b>Reconstitution Method:</b>	<ol style="list-style-type: none"> <li>1. Centrifuge at 5,000xg for 5min.</li> <li>2. Carefully open the tube and add 100ul of sterile water to dissolve the DNA.</li> <li>3. Close the tube and incubate for 10 minutes at room temperature.</li> <li>4. Briefly vortex the tube and then do a quick spin (less than 5000xg) to concentrate the liquid at the bottom.</li> <li>5. Store the suspended plasmid at -20°C. The DNA is stable for at least one year from date of shipping when stored at -20°C.</li> </ol>
<b>RefSeq:</b>	<u>NM_145486.5, NP_663461.2</u>
<b>RefSeq Size:</b>	3452 bp
<b>RefSeq ORF:</b>	864 bp
<b>Locus ID:</b>	224703
<b>Cytogenetics:</b>	17 B1
<b>MW:</b>	31.9 kDa
<b>Gene Summary:</b>	E3 ubiquitin-protein ligase that may mediate ubiquitination of TFRC and CD86, and promote their subsequent endocytosis and sorting to lysosomes via multivesicular bodies. E3 ubiquitin ligases accept ubiquitin from an E2 ubiquitin-conjugating enzyme in the form of a thioester and then directly transfer the ubiquitin to targeted substrates. May be involved in endosomal trafficking through interaction with STX6.[UniProtKB/Swiss-Prot Function]

**Product images:**


Circular map for MR216574