

Product datasheet for MR216563

Vsig1 (NM_026103) Mouse Tagged ORF Clone

Product data:

Product Type:	Expression Plasmids
Product Name:	Vsig1 (NM_026103) Mouse Tagged ORF Clone
Tag:	Myc-DDK
Symbol:	Vsig1
Synonyms:	1700062D20Rik; 4930405J24Rik
Vector:	pCMV6-Entry (PS100001)
E. coli Selection:	Kanamycin (25 ug/mL)
Cell Selection:	Neomycin
ORF Nucleotide Sequence:	>MR216563 representing NM_026103 Red=Cloning site Blue=ORF Green=Tags(s)

TTTTGTAATACGACTCACTATAGGGCGCCGGAATTCGTCGACTGGATCCGGTACCGAGGAGATCTGCC
GCCGCGATCGCC

ATGATGGTGTGGCATTGGGAAGGTCTTCTGATCTTAACTGCCTTGCAGGTCAGGTCAGTATGGTGC
AAGTGACCATCCAGACACTTTCGTGAATGTGACTGTTGGATCTAATGTTACTCTTCTGCCTCTATAC
CACCACCGAGAAGTCCCTGGAAAAGCTTCAATCAATGGTCTTCTTCCACAATAAGGAAATGGAGGAG
CCAATATCTCATGTCTCGCACCCAAAAGTGGAGGATGGAGGAAAAGGCAGTCAGTCAGTGTCTAAAA
TGATGCATGCAAGAGACGCTCGGGGAAGATGTAGCTGGACCTCTCAGATCTACTACTCTGAAGGTGGACA
GGCTTCAGCTATTGGCAATTCAAAGACCGAATAATTGGGGCTACTAATCCCGGTAATGCATCTATCACC
ATATTGCATATGCAGCCAGCAGACAGTGGAAATTTACATCTGTGATGTCAACAATCCTCCAGATTTTGTGG
GCAAAAACCAAGGCTCCTTGACGTCACTGTCTTAGTCAAACCTTCAAGCCCTTTGTACCATCCAAGG
AAGACCAGAAGCAGGCCATCCTATTTCCCTGTCTTGCCTTTGCCTTTGGAACACCGTCTCCTTTGTAT
TACTGGTATAAGATTGAGGGGAACACCATTGTGCCAGTAAAAGAAAGTTCAACACGGCCACTGGAGTTT
TAGTTATTGAAATCTAACAAATTTGAACAAGTTATTACCAGTGTACTGCCATCAACAGTCTTGGCAA
TAGTTCCCTGTGAAATTGACTTAACTTACGTCTTACATCCAGAAGTTGGGATCATCATCGGAGCTTTGGTCGGT
GCCCTGATAGGAGCTGCTGTTATCATCTGTGTGGTGTACTTTGCCAGGAACAAAGTTAAATCCAAGCAGC
AGAAGAATTTAAATCCAGCACAGAACTTGAGCCAATGACAAAGGTACACCATCCCCAACAAAGTGAAGC
AATTTAGCTGATGGCGTCCAGCTAGAAGGAACTTGCCATCTTCCATCCATGCTGGCCACAACACCGAA
CCTACTACTACAGCAGTCTTGGAGCCAGAATATGAGCCTAATCCTCCACTGGAACTACCACACAGCCTG
ACCCTGAACCAGAGGGTTCAGTGCCAGTGTAGCACCTGAGGCAGAGATTCAACCACACCCAGAGCTGGA
CCCGGAGACTGAGACAGAGCCTGAGCCTGAGCCTAAGCCTGAGCCTGAGCCGGAACCTGAGCTT
GAGCCTGATCCCAGTCTGGAGTAATAATTGAGCCTCTGAGCAAGCGGGAGAGGATACAGTTAAGCA

ACGCGTACGCGGCCGCTCGAGCAGAAAACCTCATCTCAGAAGAGGATCTGGCAGCAAATGATATCCTGGATT
ACAAGGATGACGACGATAAGGTTTAA



[View online »](#)

Protein Sequence: >MR216563 representing NM_026103
 Red=Cloning site Green=Tags(s)

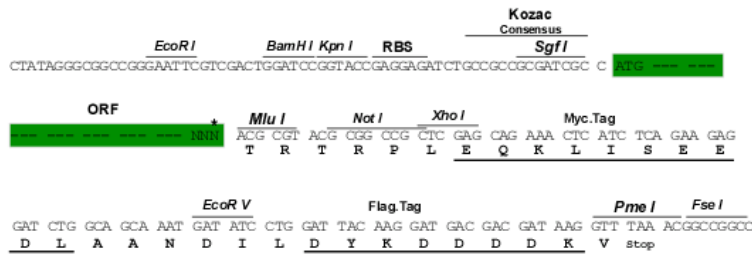
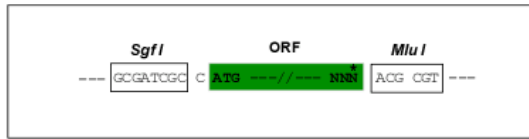
MMVFAFWKVFLLINCLAGQVSMVQVTIPDTFVNVTVGSNVTLLCLYTTTEKSLEKLSIQWSFFHNKEMEE
 PISHVSHPKTEGMEEKAVSQCLKMMHARDARGCSWTSQIYYSEGGQASAIQGFKDRIIGATNPGNASIT
 ILHMQPADSGIYICDVNPPDFVGNQGLLDVTVLVKPSKPFCTIQGRPEAGHPISLSCLSAFGTPSPLY
 YWYKIEGNTIIPVKESFNATGVLVIGNLTNFEQGYQCTAINSLGNSSCEIDL TSSHPEVGIIGALVG
 ALIGAAVIICVYYFARNKVKSKQKLNLSSTLEPMTKVHHPQQSEASISADGVQLEGLTLPSSIHAGHNT
 PTTTAVLEPEYEPNPPLTTTTPDPEPEGSVPVLAPEAEIQHPPELDPETETEPEPEPEPEPEPEPEL
 EPDPQSGVIIIEPLSKAGEDTVKA

TRTRPLEQKLISEEDLAANDILDYKDDDDKV

Restriction Sites:
 Cloning Scheme:

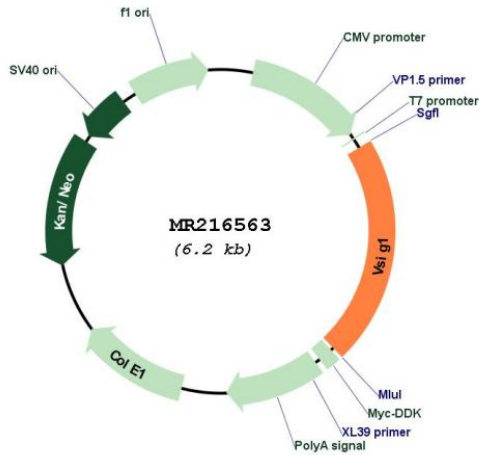
SgfI-MluI

Cloning sites used for ORF Shuttling:



* The last codon before the Stop codon of the ORF

Plasmid Map:



ACCN: NM_026103

ORF Size:	1329 bp
OTI Disclaimer:	<p>Due to the inherent nature of this plasmid, standard methods to replicate additional amounts of DNA in E. coli are highly likely to result in mutations and/or rearrangements. Therefore, OriGene does not guarantee the capability to replicate this plasmid DNA. Additional amounts of DNA can be purchased from OriGene with batch-specific, full-sequence verification at a reduced cost. Please contact our customer care team at custsupport@origene.com or by calling 301.340.3188 option 3 for pricing and delivery.</p> <p>The molecular sequence of this clone aligns with the gene accession number as a point of reference only. However, individual transcript sequences of the same gene can differ through naturally occurring variations (e.g. polymorphisms), each with its own valid existence. This clone is substantially in agreement with the reference, but a complete review of all prevailing variants is recommended prior to use. More info</p>
OTI Annotation:	This clone was engineered to express the complete ORF with an expression tag. Expression varies depending on the nature of the gene.
Components:	The ORF clone is ion-exchange column purified and shipped in a 2D barcoded Matrix tube containing 10ug of transfection-ready, dried plasmid DNA (reconstitute with 100 ul of water).
Reconstitution Method:	<ol style="list-style-type: none"> 1. Centrifuge at 5,000xg for 5min. 2. Carefully open the tube and add 100ul of sterile water to dissolve the DNA. 3. Close the tube and incubate for 10 minutes at room temperature. 4. Briefly vortex the tube and then do a quick spin (less than 5000xg) to concentrate the liquid at the bottom. 5. Store the suspended plasmid at -20°C. The DNA is stable for at least one year from date of shipping when stored at -20°C.
RefSeq Size:	2482 bp
RefSeq ORF:	903 bp
Locus ID:	78789
UniProt ID:	Q9D2J4
Cytogenetics:	X F1
MW:	32.6 kDa