

## Product datasheet for **MR216544**

### Serpina7 (NM\_177920) Mouse Tagged ORF Clone

#### Product data:

Product Type:	Expression Plasmids
Product Name:	Serpina7 (NM_177920) Mouse Tagged ORF Clone
Tag:	Myc-DDK
Symbol:	Serpina7
Synonyms:	C730040N12Rik; Tbg
Mammalian Cell Selection:	Neomycin
Vector:	pCMV6-Entry (PS100001)
E. coli Selection:	Kanamycin (25 ug/mL)



[View online »](#)

**ORF Nucleotide Sequence:**

>MR216544 representing NM\_177920  
 Red=Cloning site Blue=ORF Green=Tags(s)

TTTTGTAATACGACTCACTATAGGGCGGCCGGAATTCGTCGACTGGATCCGGTACCGAGGAGATCTGCC  
 GCC**CGCATCGCC**

ATGTGCTATCATCTTCATTCCAGAATGTCAGTGTCTCTATCTGTTTGTCTTGGTATTTGGGCTTCAGG  
 CTACAATCCATTGTGCACCACATAACAGCTCTGAAGGCAAAGTAACGACCTGTCAATTTGCCCAACAAAA  
 TGCCACTCTCTATAAGATGCCATCTATCAATGCTGACTTTGCATTCAGTCTGTATCGGAGGCTCTCTGTG  
 GAGAACCCAGATTTGAACATCTTCTCTCCCTGTGAGCATATCTGTTGCTTTAGCCATGCTTTCTTTTG  
 GATCTGGCTCTAGCACCCAAACACAGATTCTGGAGGTGTGGGGTTTAACTCACAGATACTCCCGTGAC  
 AGAATTACAACAGGGCTCCAACATTTGATCTGTTTCAATTTCCAAAGAATGAAGTGAATTGCAG  
 ATGGGAAATGCAGTTTTCATTGGACAGCAGCTGAAACCATTGGCAAAGTTTTTGGATGATGTCAAGACCC  
 TCTATGAAACTGAAGTCTTTTCTACTGACTTCTCCAATGTTTCTGCAGCCAGCACAAGATCAACAGTTA  
 TGTGGAGAAGCAAACAAAGGAAAATTGTAGGCTTAATCAAGGCCTCAAAGTGAATATTATCATGATT  
 CTGGTGAAGTATATTCATTTAGAGCCAGTGGGCAAATCCTTTCCGTGTATCTAAAAGTGAAGAGATT  
 CCAACTTCTCAGTGGACAAGAGCACCACAGTACAAGTGCCTATGATGCACCAGCTAGAACAATACTATCA  
 TTACGTGGATATGGAGCTGAATTGTACAGTACTTCAAATGGACTATAGTGAGAAGCCCTGGCACTTTTT  
 GTCCTTCCAAAAGAGGGACACATGGAAATGGGTAGAAGCAGCCATGTATCTAAGACACTGAAGAAGTGG  
 ACTATTTACTGCAGAAAGGATGGGTGAATTGTTTGTCCAAAGTTTTCTATTTCTGCCACATATGACCT  
 TGGAAAGCACACTTCAAGATGGGTATGAGGGATGCCTTTGCTGAAAGTGTGACTTTCTGGAATAACA  
 GAAGACAGTGGTCTAAAAGTCTTCTATGCTTTTCAAGGCTGTGCTACACATTGGTGAAGAGGGAAC  
 AAGAGGGAGCTTCTCTGAAGTGGGTCTCTGGATCAGCAGGAAGTACCTCCTTCCACCTGTTATCCG  
 ATTGGATAGAGCATTCTTACTGATGATTTTGGAGAAAAGAACCAAGTGTCTCTTTTTAGGAAAAGT  
 GTTAACCAACAAAACAG

**ACGCGT**ACGCGGCCGCTCGAGCAGAAACTCATCTCAGAAGAGGATCTGGCAGCAAATGATATCCTGGATT  
 ACAAGGATGACGACGATAAGGTTTAA

**Protein Sequence:**

>MR216544 representing NM\_177920  
 Red=Cloning site Green=Tags(s)

MCYHLHSRMSVFFYL FVLVFLQATIHCAPHNSSEKVTTC HLPQQNATLYKMP SINADFAFSLYRRLSV  
 ENPDLNIFFPVSI SVALAMLSFGSGSSTQTQILEVLGFNLDTDPVTELQ QGFQHLICSLNFPKNELELQ  
 MGNVAVIGQQLKPLAKFLDDVKTLYETEVFSTDFSNVSAQHKINSYVEKQTKGKIVGLIQGLKLNIMI  
 LVNYIHFRAQWANPFRVSKTEESSNFVVDKSTTVQVPMHQLQEQYYHYVDMELNCTVLMQDYSNALALF  
 VLPKEGHMEWVEAAMSSKTLKKWNYLLQKGWVLFVPKFSISATYDLGSTLQKMGMRDAFAESADFPGIT  
 EDSGLKLSYAFHKAVLHIGEEGTEKASPEVGSLDQQEVPLHPVIRLDRAFLLMILEKRTRSVLFLGKL  
 VNPTKQ

**TR**TRPLEQKLISEEDLAANDILDYKDDDDKV

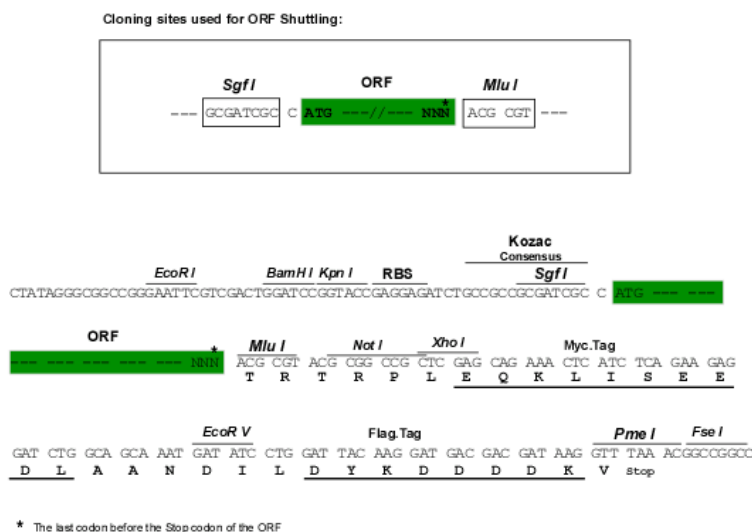
**Chromatograms:**

[https://cdn.origene.com/chromatograms/mm9006\\_d08.zip](https://cdn.origene.com/chromatograms/mm9006_d08.zip)

**Restriction Sites:**

SgfI-MluI

## Cloning Scheme:



ACCN: NM\_177920

ORF Size: 1278 bp

OTI Disclaimer: The molecular sequence of this clone aligns with the gene accession number as a point of reference only. However, individual transcript sequences of the same gene can differ through naturally occurring variations (e.g. polymorphisms), each with its own valid existence. This clone is substantially in agreement with the reference, but a complete review of all prevailing variants is recommended prior to use. [More info](#)

OTI Annotation: This clone was engineered to express the complete ORF with an expression tag. Expression varies depending on the nature of the gene.

Components: The ORF clone is ion-exchange column purified and shipped in a 2D barcoded Matrix tube containing 10ug of transfection-ready, dried plasmid DNA (reconstitute with 100 ul of water).

Reconstitution Method:

1. Centrifuge at 5,000xg for 5min.
2. Carefully open the tube and add 100ul of sterile water to dissolve the DNA.
3. Close the tube and incubate for 10 minutes at room temperature.
4. Briefly vortex the tube and then do a quick spin (less than 5000xg) to concentrate the liquid at the bottom.
5. Store the suspended plasmid at -20°C. The DNA is stable for at least one year from date of shipping when stored at -20°C.

RefSeq: [NM\\_177920.5](#), [NP\\_808588.3](#)

RefSeq Size: 2368 bp

RefSeq ORF: 1281 bp

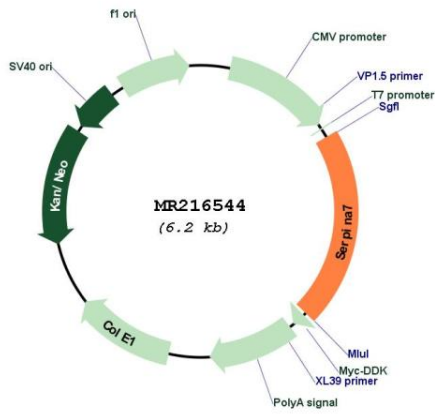
Locus ID: 331535

Cytogenetics: X F1

MW: 48.5 kDa

Gene Summary: Major thyroid hormone transport protein in serum.[UniProtKB/Swiss-Prot Function]

Product images:



Circular map for MR216544