

Product datasheet for MR216497

Clasp2 (NM_001081960) Mouse Tagged ORF Clone

Product data:

Product Type:	Expression Plasmids
Product Name:	Clasp2 (NM_001081960) Mouse Tagged ORF Clone
Tag:	Myc-DDK
Symbol:	Clasp2
Synonyms:	1500004F14Rik; 8030404L10Rik; C77448; CLASP2beta; mKIAA0627
Mammalian Cell Selection:	Neomycin
Vector:	pCMV6-Entry (PS100001)
E. coli Selection:	Kanamycin (25 ug/mL)
ORF Nucleotide Sequence:	>MR216497 ORF sequence Red=Cloning site Blue=ORF Green=Tags(s)

TTTTGTAATACGACTCACTATAGGGCGCCGGGAATTCGTCGACTGGATCCGGTACCGAGGAGATCTGCC
GCC**CGATCGCC**

ATGAGGCGGTGATTTGCAAACGGATCTGTGATTATAAAAGCTTTGATGATGAGGAATCAGTGGATGGAA
ATAGGCCGTCGTCAGCTGCTTCAGCCTTCAAGGTTCTGCACCTAAAACACCTGGGAATCCTGTCAGCAG
TGCAAGAAAGCCTGGTTCAGCAGGTGGCCCTAAGGTTGGAGGTCCTTCTAAAGAAGGAGGGGCTGGAGCA
GTTGATGAAGATGACTTTATAAAAGCTTTACAGATGTTCTTCTGTTTCAGATCTATTCTAGTCGAGAAC
TTGAAGAGACGTTAAATAAGATCAGGGAATTTTGTGATGACAAACATGACTGGGACCAGCGTGCCAA
TGCCTTAAGAAAATCAGATCACTGCTTGTGCTGGAGCCGACAGTATGATTGCTTTTTCCAGCACCTA
CGTTTGTGGATGGAGCGCTTAAGCTGTGAGCTAAGGACCTCAGATCCCAGGTGGTCAGGGAAGCTTGCA
TCACTGTTGCTCACCTTTCAACAGTCTTGGGAAACAAATTTGATCACGGCGCTGAAGCCATCGTCCCTAC
GCTTTTTAATCTGTCCCAATAGTGCCAAAGTCATGGCGACCTCTGGATGTGCAGCAATCAGATTTATT
ATTCGGCATACCCATGTACCTAGACTTATTCTTTAATAACAAGCAACTGCACATCAAAGTCAGTTCCTG
TAAGGAGACGTTCAATTTGAATTTTAGATTTGCTGCTGCAAGAATGGCAGACTCATTCACTGGAAAGACA
TGCAGCTGTTTTGGTTGAAACGATTAAGAAGGGCATTTCATGATGCTGATGCTGAGGCCAGAGTGGAGGCA
AGGAAGACATACATGGGCCTTAGGAACCACTTTCTGGTGAAGCTGAAACATTGTACAACCTCCCTTGAGC
CATCATATCAGAAAAGTCTTCAAACCTACTTAAAGAGTTCTGGAAGTGTAGCTTCTTCCGACGTCAGA
CAGGTCCTCATCCAGCTCACAAGAAAGTCTCAATCGTCCTTTTTCTTCTAAATGGTCAACAGCAAATCCT
TCAACTGTAGCTGGAAGAGTATCTGTGGGAGGCAGCAAAGCCAACCCCTTCCAGGAAGCCTGCAGCGTT
CTCGAAGTGACATTGATGTGAATGCGGCAGCTGGTGCCAAGGCTCATCATGCTGCTGGCAGGCGGTGCG
AAGTGGGCGCTTAGGTGCAGGTGCCCTGAACCCAGGCTCCTATGCATCACTAGAGGATACTTCTGACAAG
ATGGATGGAACAGCATCTGATGATGGTGGGTGAGAGCCAAGCTTTCTACACCGCTTGTGCTGTGGGAA
ATGCCAAGACCGACTCTAGAGGGAGAAGCCGGACAAAAATGGTGTCTCAGTCCCAGCCTGGCAGCCGATC
TGGGTCTCCAGGAAGAGTTCTAACCACAACAGCCCTCTACTGTGAGCTCTGGTCTCAACGAGTCTGT



[View online »](#)

GTCAATTCAGCTTCAGCACAGAAGAAGCAAGATCCCAAGGAGCCAGGGCTGCAGCAGAGAGGCCAGCC
CATCTCGGCTCTCAGTGGCCCGGAGCAGCCGATTCTCGGCCGAGTGTGAGTCAAGGCTGTAGCCGGGA
AGCCAGCAGAGAGAGCAGCAGGGACACGAGTCCGGTGCCTCTCCAGCCGCTGGGTCCGGGATATGGG
ATCAGCCAGTCCAGCCGGTTGTCGTCTCTGTGAGTCCATGCGAGTCTAAACACAGGCTCCGATGTGG
AGGAGGCAGTAGCTGATGCCCTGCTCTTAGGAGACATACGGACTAAGAAAAACCTGCTCGAAGAAGGTA
TGAATCATATGGAATGCACTCAGATGATGATGCCAACAGCGATGCCTCTAGTGCCTGTTCCAGAACGCTCC
TATAGCTCTCGAAATGGTAGTATTCCTACCTACATGAGACAGACAGAAGACGTGGCAGAAGTCCCAACA
GATGTGCTAGCTCCAATTGGTCAGAGAGGAAAGAAGGCCCTTGGGTCTGCAGAACTTGTTAAAAACCA
GAGAACGCTAAGTCGAGTTGAACTGAAAAGATTATGTGAAATTTTCAAGAATGTTTCAGATCCTCAT
GGCAAGAGAGTGTTCAGCATGTTCTTGGAGACTTAGTAGATTTTACATAAAGTCCACAAAGATGATCTTC
AAGATTGGTTGTTTGTCTGCTGACACAGCTGCTGAAAAAATGGGTGCTGATTTGCTTGGCTCTGTTCA
GGCAAAAGTTCAGAAAGCCCTTGATATTACAAGAGAGTCTTTTCCAAATGATCTTCAGTTAATATCCTA
ATGAGATTTACAGTTGACCAGACCCAAACGCCAAGCTTGAAGGTAAGGTGGCTATCCTTAAGTACATAG
AAACTCTGGCAAAGCAGATGGACCCAAGAGATTTTACAAATCCAGTGAAGTCCGCTGGCAGTGTCTCG
GGTCATCACTTGGACGACAGAGCCAAAAGCTCTGATGTTCCGGAAGGCAGCGCAGTCACTGCTGATTCT
TTATTTGAACTCAATACCCAGAGTTTACAATGTTACTAGGAGCTTTACCAAAAACCTTTCCAGGATGGTG
CTACTAACTTCTTCAATCACCTCCGGAACACTGGCAATGGCACCAGAGTTCATGGGGAGTCCCTT
GACGAGACCAACCTCGGTACCCAGCCAACTGGTCCAGTCTCTTACTTCTCTACCAACAGTCTCAG
AATACGTTATCTCAAGTGCATTTGATTACGATACAGAGAACAATGAATTCGAAGACATTTATAGCTCCC
TTAGAGGCGTCACTGAGGCAATCCAGAATTTAGCTTCCAGAAGCCAAGAAGATATGAGTGAAGCAGTGA
GAGGGACCCTAAAAAGGAGGATGGTGACACAATATGAGTGGTCTGGGATGTCAGATCCAAGAGCAGGA
GGTGTGCTGCTGACGGCAGCCAGCCAGCTCTGGATAATAAAGCATCGTTGCTCCACTCAATGCCACTCC
ACTCCTCTCCACGCTCCCGTACTATAACCCATAAAGTACTCAGATAGCATCAGTCTTTCAACAAGTC
TGCCCTCAAGGAAGCCATGTTTATGATGACGCCGACCAATTTCTGATGATCTTTCTTAGACCTTCT
GACCTAGTTGCAGAGTTGTTGAAGGAGTGTCTAATCATAATGAACGTATAGAAGAAAGAAAAATTGCC
TGTATGAACCTCATGAAGCTAACCAGGAAGAATCTTTCAGTGTGGGATGAACACTTCAAAAACAATATT
ATTGTTATTGCTTGAGACCCTTGGGGATAAAGAGCCTACAATCCGGGCCTTGGCATTAAAAGTTTTAAAA
GAAATCTTAAGGCATCAACCAGCAAGATTCAAAAACTATGCAGAACTAAGTGTATGAAAACACTGGAAG
CACATAAAGATCCTCACAAGAGGTGGTGAGATCTGCTGAGGAAGCTGCCTCCGATTGGCTACTCCAT
TAGTCCAGAGCAGTGCATCAAAGTGCTTTGTCCCATCATACAAACCGCTGACTACCCTATTAATCTGGCT
GCAATCAAAATGCAAACAAAAGTATAGAGAGAGTATCCAAGGAGACCCTAACATGCTCTTACCAGAGA
TCATGCCGGGTCTAATACAGGGTTATGATAATTCAGAAAGCAGTGTCCGAAAGCTTGTGTCTTCTGCC
GGTGGCTGTCATGCAGTATTGGTGTGAACTAAAGCCACATCTCAGTCAACTCACTGGTAGTAAATG
AAGCTGTGAACCTTTACATCAAGCGTGCACAGACGGGCTCTGCAGGCGCGGACCCCACTGCTGATGTTT
CTGGACAGAGT

ACGCGTACGCGGCCGCTCGAGCAGAACTCATCTCAGAAGAGGATCTGGCAGCAATGATATCCTGGATT
ACAAGGATGACGACGATAAGGTTTAA

Protein Sequence: >MR216497 protein sequence
 Red=Cloning site Green=Tags(s)

MRRLLICKRICDYKSFDEESVDGNRPSSAASAFKVPAPKTPGNPVSSARKPGSAGGPKVGGPSKEGGAGA
 VDEDDFIKAFTDVPVSVQIYSSRELEETLNKIREILSDDKHDWDQRANALKKIRSLLVAGAAQYDCFFQHL
 RLLDGLKLSAKDLRSQVVREACITVAHLSTVLGNKFDHGAEIVPTLFNLVPNSAKVMATSGCAAIRFI
 IRHHTVPRLIPLITSNCTSKSVVRRRSFEFLDLLLLQEWQTHSLERHAAVLVETIKKGIHDADAERVEA
 RKTYMGLRNHFPGEAETLYNSLEPSYQKSLQTYLKSSGSVASLPQSDRSSSSSQESLNRPFSSKWSTANP
 STVAGRVSVGGSKANPLPGSLQRSRSDIDVNAAGAKAHHAAGQAVRSGRLGAGALNPGSYASLEDTSDK
 MDGTASDDGRVRAKLSTPLVAVGNAKTDSRGRSRTKMVSQSQPGSRSGSPGRVLT TALSTVSSGAQRVL
 VNSASAQKRKIPRSQGC SREASPSRLSVARSSRIPRPSVVSQGC SREASRESSRDTSPVRSFQPLPGYGY
 ISQSSRLSSSVSAMRVLNTGSDVEEAVADALLGDIRTKKKPARRRYESYGMHSDDDANS DASSACRSR
 YSSRNGSIPTYMRQTEDVAEVLNRCASSNWSEKELGLLGNLLKNQRTL SRVELKRLCEIFTRMFADPH
 GKRVSF SMFLET LVDFIQVHKDDLQDWL FVLLTQLLKKMGADLLGSVQAKVQKALDITRESFPNDLQFNIL
 MRFVTVDQTQTPSLKVKVAILKYIETLAKQMDPRDF TNSSETRLAVSRVITWTTEPKSSDVRKAAQSVLIS
 LFELNTPFEFTMLL GALPKTFQDGATKLLHNHLRNTGNGTQSSMGSPLTRPTPRSPANWSSPLTSPNTSQ
 NTLSPSAFDYDTENMSEDIYSSLRGVTEAIQNF SFRSQEDMSEPVRDPKEDGDTICSGPGMSDPRAG
 GDAADGSPALDNKASLLHSMPLHSSPRSRDYNPNYSDSISPFNK SALKEAMFDDADQFPDDLSDHS
 DLVAELLKELSNHNERIEERKIALYELMKLTQEESFSVWDEHFKILL LLLLETLGDKEPTIRALALKVLK
 EILRHQPARFKNYAELTVMKLTLEAHKDPHKEVRSAAEAA SVLATSISPEQCIKVLCP IIQTADYPINLA
 AIKMQTKVIERVSKETLNMLLPEIMPGLIQGYDNSESSVRKACVFC LVAVHAVIGDELKPHLSQLTGSKM
 KLLNLVIKRAQTGSAGADPTADVSGQS

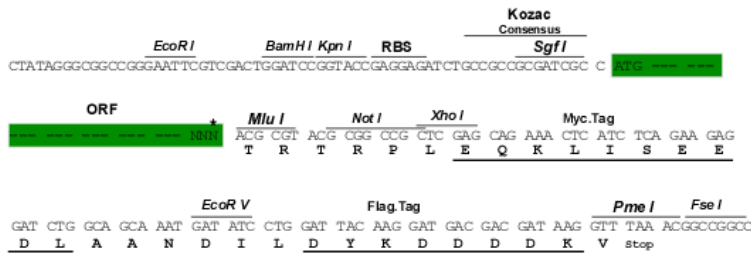
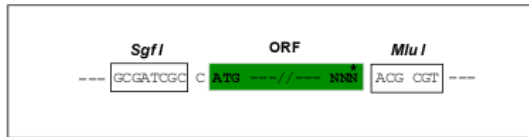
TRTRPLEQKLISEEDLAANDILDYKDDDDKV

Restriction Sites:

Sgfl-MluI

Cloning Scheme:

Cloning sites used for ORF Shuttling:



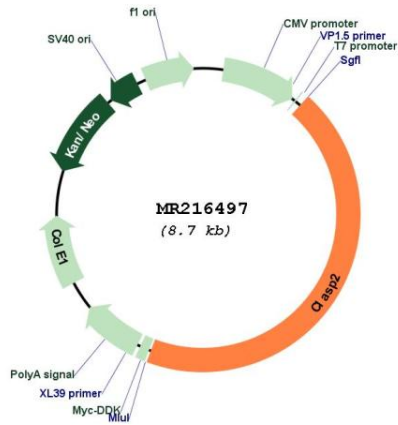
* The last codon before the Stop codon of the ORF

ACCN: NM_001081960

ORF Size: 3864 bp

OTI Disclaimer:	The molecular sequence of this clone aligns with the gene accession number as a point of reference only. However, individual transcript sequences of the same gene can differ through naturally occurring variations (e.g. polymorphisms), each with its own valid existence. This clone is substantially in agreement with the reference, but a complete review of all prevailing variants is recommended prior to use. More info
OTI Annotation:	This clone was engineered to express the complete ORF with an expression tag. Expression varies depending on the nature of the gene.
Components:	The ORF clone is ion-exchange column purified and shipped in a 2D barcoded Matrix tube containing 10ug of transfection-ready, dried plasmid DNA (reconstitute with 100 ul of water).
Reconstitution Method:	<ol style="list-style-type: none">1. Centrifuge at 5,000xg for 5min.2. Carefully open the tube and add 100ul of sterile water to dissolve the DNA.3. Close the tube and incubate for 10 minutes at room temperature.4. Briefly vortex the tube and then do a quick spin (less than 5000xg) to concentrate the liquid at the bottom.5. Store the suspended plasmid at -20°C. The DNA is stable for at least one year from date of shipping when stored at -20°C.
RefSeq:	NM_001081960.1 , NP_001075429.1
RefSeq Size:	5627 bp
RefSeq ORF:	3864 bp
Locus ID:	76499
Cytogenetics:	9 F3
MW:	140.9 kDa
Gene Summary:	Microtubule plus-end tracking protein that promotes the stabilization of dynamic microtubules. Involved in the nucleation of noncentrosomal microtubules originating from the trans-Golgi network (TGN). Required for the polarization of the cytoplasmic microtubule arrays in migrating cells towards the leading edge of the cell. May act at the cell cortex to enhance the frequency of rescue of depolymerizing microtubules by attaching their plus-ends to cortical platforms composed of ERC1 and PHLDB2. This cortical microtubule stabilizing activity is regulated at least in part by phosphatidylinositol 3-kinase signaling. Also performs a similar stabilizing function at the kinetochore which is essential for the bipolar alignment of chromosomes on the mitotic spindle. Acts as a mediator of ERBB2-dependent stabilization of microtubules at the cell cortex.[UniProtKB/Swiss-Prot Function]

Product images:



Circular map for MR216497