

## Product datasheet for **MR216415**

### **Ntng1 (NM\_030699) Mouse Tagged ORF Clone**

#### **Product data:**

Product Type:	Expression Plasmids
Product Name:	Ntng1 (NM_030699) Mouse Tagged ORF Clone
Tag:	Myc-DDK
Symbol:	Ntng1
Synonyms:	A930010C08Rik; AI853992; Lmnt1
Vector:	pCMV6-Entry (PS100001)
E. coli Selection:	Kanamycin (25 ug/mL)
Cell Selection:	Neomycin



[View online »](#)

**ORF Nucleotide Sequence:**

>MR216415 representing NM\_030699  
 Red=Cloning site Blue=ORF Green=Tags(s)

TTTTGTAATACGACTCACTATAGGGCGGCCGGGAATTCGTCGACTGGATCCGGTACCGAGGAGATCTGCC  
 GCC**CGGATCGCC**

ATGATATTTGTCAAGATTCCTGTGTCGATCCATGCCCTGTGGGTGACAGTGTCTCTGTGATGCAGCCCTACC  
 TTTTCGTGTGGGACATTATGATGTATGTAAAGAGCCTGATTTACACAGAAGAAGGCAAAGTTTGGGATTA  
 CACAGCCTGCCAGCCGGAAATCCACGGACATGACCAAGTATCTGAAAGTAAAAGTGGACCCCTCCGGATATT  
 ACCTGTGGAGACCCTCCAGAGTCTTCTGTGCAATGGGCAACCCTTACATGTGCAATAATGAGTGTGATG  
 CGAGTACCCTGAACTGGCACACCCTCCTGAGCTGATGTTTGAAGGAAGACATCCCTCCACATT  
 TTGGCAGTCTGCTACTTGAAGGAGTACCCAAACCTCTCCAGTTAACATCACTCTGTCTTGGAGCAAA  
 ACCATTGAACTCACAGACAACATAGTTATTACCTTTGAATCGGGCGTCCAGACCAATGATCCTAGAGA  
 AATCTCTCGACTACGGACGAACATGGCAGCCCTATCAGTATTATGCCACAGACTGCCTCCATGCATTCCA  
 CATGGACCCGAAATCCGTGAAGGATTTATCTCAGCACACGGTCTTGGAAATCATTTCGACGGAAGAGTAC  
 TCCACTGGGTACTCCACGAATAGCAAAATATCCACTTCGAGATCAAAGCAGGTTTGCCTTTTCGCTG  
 GACCTCGGCTACGAAATATGGCTTCCCTCTATGGACAGCTGGATACAACCAAGAAACTCAGAGATTTCTT  
 CACTGTACAGACCTGAGGATCAGGCTGTTGAGACCCGCCGTTGGGGAAATATTTGTAGATGAACTACAT  
 TTGGCAGGTTACTTTTATGCGATCTCAGACATAAAGGTGCGAGGAAGGTGCAAGTGAACCTGCATGCCA  
 CTTTCGTGTTTGTATGACAACAGCAAACCTGACATGTGAATGTGAGCACAACACTACAGTCCCAGCTGTGG  
 GAAATGCAAGAAGAACTACCAGGGCCGACCTTGGAGCCCCGGCTCATACCTCCCCATCCCCAAAGGCACC  
 GCAAACACCTGTATCCCCAGCATTTCAGTATCGGTAACGTGAATGCTTCGGCCACTCCAATCGGTGCA  
 GTTATATCGATCTGCTAAACACAGTCAATTCGCTGAGCTGTAACACAACACTAGAGGGCAGCAGTGTGA  
 GTTATGACAGGCTGGGCTACTTCAGAAATGCTTCTGCACAGCTGGACGATGAGAATGTGTGCATAGAGTGT  
 TATTGTAACCCCTTTGGGCTCAATCCATGATCGTTGTAATGGCTCAGGATTTTGTGAGTGTAAAGCTGGAA  
 CAACAGGGCCTAAATGTGATGAGTGTCTGCCAGGAAATCCTGGTACTACGGCTGTCAACCTAATGTCTG  
 CGACAATGAGCTCCTGCACTGCCAGAAATGGAGGGACCTGCCAGAACAAATGTGCGCTGCGCGTGCCAGAC  
 GCCTACACCGGCATCCTCTGTGAGAAGCTACGGTGCAGAGGGCGGGCAGCTGTGGCTCCGAATCCGGCC  
 AGGGAGCACCCCCGCGGGCTCCCCAGCACTGTGCTGCTGACCATGCTGCTGGGACTGCCGTTCCCT  
 GGTGTTT

**ACGCGTACGCGGCCGCTCGAGCAGAAACTCATCTCAGAAGAGGATCTGGCAGCAAATGATATCCTGGATT  
 ACAAGGATGACGACGATAAGGTTTAA**

**Protein Sequence:**

>MR216415 representing NM\_030699  
 Red=Cloning site Green=Tags(s)

MYLSRFLSIHALWVTVSSVMQPYLFWVGHYDVCKSLIYTEEGKVWDYTACQPESTDMTKYLKVKLDPPDI  
 TCGDPPESFCAMGNPYMCNNECDASTPELAHPPELMDFEGRHPSTFWQSATWKEYPKPLQVNIITLSWSK  
 TIELTDNIVITFESGRPDQMILEKSLDYGRWQPYQYYATDCLHAFHMDPKSVKDLSQHTVLEIICTEY  
 STGYSTNSKIIHFEIKDRFAFFAGPRLRNMASLYGQLDITTKLRDFFTVTDLRIRLLRPVGEIFVDELH  
 LARYFYAISDIKVRGRCKNLHATSCLYDNSKLTCECEHNTTGPDCGKCKKNYQGRPWSPGSYLP  
 IPKGTANTCIPSISSIGNCECFGHSNRCSYIDLLNTVICVSKHNTRGQHCELCRLGYFRNASALDDENVCIEC  
 YCNPLGSIHDCNNGSGFCECKTGTTPKCECLPGNSWYGCQPNVCDNELLHCQNGGTCQNNVRCACPD  
 AYTGILCEKLRCEEAGSCGSESGQGAPPRGSPALLLLTMLLGTAGPLVF

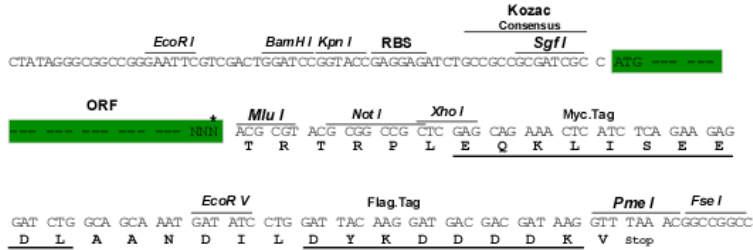
**TRTRPLEQKLISEEDLAANDILDYKDDDDKV**

**Restriction Sites:**

Sgfl-MluI

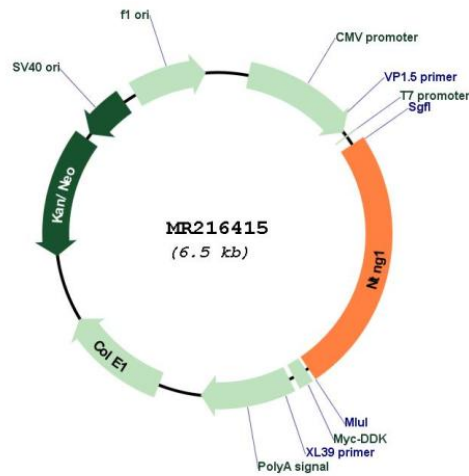
Cloning Scheme:

Cloning sites used for ORF Shuttling:



\* The last codon before the Stop codon of the ORF

Plasmid Map:



<b>ACCN:</b>	NM_030699
<b>ORF Size:</b>	1617 bp
<b>OTI Disclaimer:</b>	The molecular sequence of this clone aligns with the gene accession number as a point of reference only. However, individual transcript sequences of the same gene can differ through naturally occurring variations (e.g. polymorphisms), each with its own valid existence. This clone is substantially in agreement with the reference, but a complete review of all prevailing variants is recommended prior to use. <a href="#">More info</a>
<b>OTI Annotation:</b>	This clone was engineered to express the complete ORF with an expression tag. Expression varies depending on the nature of the gene.
<b>Components:</b>	The ORF clone is ion-exchange column purified and shipped in a 2D barcoded Matrix tube containing 10ug of transfection-ready, dried plasmid DNA (reconstitute with 100 ul of water).
<b>Reconstitution Method:</b>	<ol style="list-style-type: none"><li>1. Centrifuge at 5,000xg for 5min.</li><li>2. Carefully open the tube and add 100ul of sterile water to dissolve the DNA.</li><li>3. Close the tube and incubate for 10 minutes at room temperature.</li><li>4. Briefly vortex the tube and then do a quick spin (less than 5000xg) to concentrate the liquid at the bottom.</li><li>5. Store the suspended plasmid at -20°C. The DNA is stable for at least one year from date of shipping when stored at -20°C.</li></ol>
<b>RefSeq:</b>	<a href="#">NM_030699.2</a> , <a href="#">NP_109624.1</a>
<b>RefSeq Size:</b>	5347 bp
<b>RefSeq ORF:</b>	1620 bp
<b>Locus ID:</b>	80883
<b>UniProt ID:</b>	<a href="#">Q8R4G0</a>
<b>Cytogenetics:</b>	3 F3
<b>MW:</b>	61 kDa
<b>Gene Summary:</b>	Involved in controlling patterning and neuronal circuit formation at the laminar, cellular, subcellular and synaptic levels. Promotes neurite outgrowth of both axons and dendrites. [UniProtKB/Swiss-Prot Function]