

Product datasheet for **MR216413**

Senp8 (NM_027838) Mouse Tagged ORF Clone

Product data:

Product Type:	Expression Plasmids
Product Name:	Senp8 (NM_027838) Mouse Tagged ORF Clone
Tag:	Myc-DDK
Symbol:	Senp8
Synonyms:	9130010J17Rik; AU020827; Den1; Nedp1; Prsc2
Mammalian Cell Selection:	Neomycin
Vector:	pCMV6-Entry (PS100001)
E. coli Selection:	Kanamycin (25 ug/mL)
ORF Nucleotide Sequence:	>MR216413 ORF sequence Red=Cloning site Blue=ORF Green=Tags(s)

TTTTGTAATACGACTCACTATAGGGCGGCCGGAATTCGTCGACTGGATCCGGTACCGAGGAGATCTGCC
GCC**CGATCGCC**

ATGGACCCTGGTCTTGAGTTATATGGACAGTCTATTGCGGCAATCAGATGTCTCACTATTGGACCCTC
CAAGCTGGCTCAACGACCACATTATTGGGTTTGCCTTTGAATACTTTGCCAATAGTCAGTTTCATGACTG
CTCAGACCATGTCTGTTTCATCAGCCCTGAAGTCACCCAGTTCATTAAGTGCACCAGCAGCCCTGCAGAA
ATTGCCATGTTTCTTGAACCCCTGGATCTTCCCCACAAAAGAGTGGTATTTTTAGCCATCAATGATAATT
CTAACCAGGCAGCCGGAGGTACCCACTGGAGTTTGTGGTTTATCTCCAAGATAAAAATAGCTTCTTTCA
TTATGATTTCCCATAGCAGGAGCAACTCAATCCATGCAAAGCAGGTAGCAGAGAACTGAAGGCTTTCTTA
GGCAGCAAAGGAGACAACTGGTCTTTGTGGAAGAGAAAGCCCCAGCTCAAGAGAACAGCTATGACTGTG
GGATGTACGTGATATGTAACACCGAGGCCCTTGTGTGAGTCTCTTTAGACGGCAGCCAGAGTCCCCGCT
GCAGCTACTCACCCGACATACATCACAAAGAAGAGAGGAGAAATGGAAAGATCTAATTGCCAGACTTGCT
AAAAAAACGAAGTAGCTACTGAAGAATGCTCG

ACGCGTACGCGGGCCGCTCGAGCAGAACTCATCTCAGAAGAGGATCTGGCAGCAAATGATATCTGGATT
ACAAGGATGACGACGATAAGGTTTAA



[View online »](#)

Protein Sequence: >MR216413 protein sequence
 Red=Cloning site Green=Tags(s)

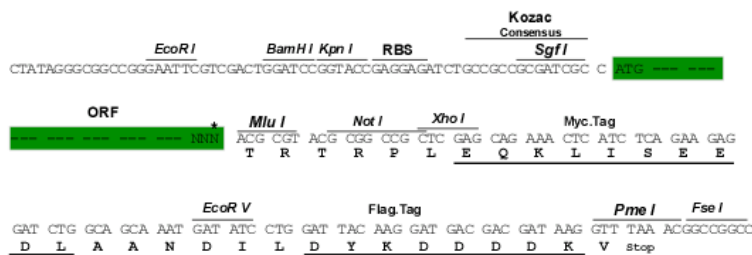
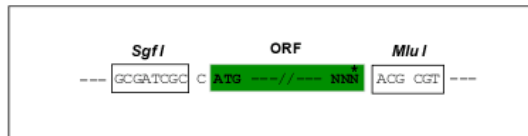
MDPVVLSYMSLLRQSDVSLDPPSWLNDHIIGFAFEYFANSQFHDCSDHVCFISPEVTQFIKCTSSPAE
 IAMFLEPLDLPHKRVVFLAINDNSNQAAGGTHWSLLVYLQDKNSFFHYDSHSRSNSIHAKQVAEKLKAF
 GSKGDKLVFVEEKAPAQENSYDCGMVVICNTEALCQSLFRRQPESPLQLLTPTYITKKRGEWKDLIARLA
 KKNEVATEECS

TRTRPLEQKLISEEDLAANDILDYKDDDDKV

Restriction Sites: SgfI-MluI

Cloning Scheme:

Cloning sites used for ORF Shuttling:



* The last codon before the Stop codon of the ORF

ACCN: NM_027838

ORF Size: 666 bp

OTI Disclaimer: The molecular sequence of this clone aligns with the gene accession number as a point of reference only. However, individual transcript sequences of the same gene can differ through naturally occurring variations (e.g. polymorphisms), each with its own valid existence. This clone is substantially in agreement with the reference, but a complete review of all prevailing variants is recommended prior to use. [More info](#)

OTI Annotation: This clone was engineered to express the complete ORF with an expression tag. Expression varies depending on the nature of the gene.

Components: The ORF clone is ion-exchange column purified and shipped in a 2D barcoded Matrix tube containing 10ug of transfection-ready, dried plasmid DNA (reconstitute with 100 ul of water).

Reconstitution Method:

1. Centrifuge at 5,000xg for 5min.
2. Carefully open the tube and add 100ul of sterile water to dissolve the DNA.
3. Close the tube and incubate for 10 minutes at room temperature.
4. Briefly vortex the tube and then do a quick spin (less than 5000xg) to concentrate the liquid at the bottom.
5. Store the suspended plasmid at -20°C. The DNA is stable for at least one year from date of shipping when stored at -20°C.

RefSeq: [NM_027838.3](#), [NP_082114.1](#)

RefSeq Size: 3682 bp

RefSeq ORF: 666 bp

Locus ID: 71599

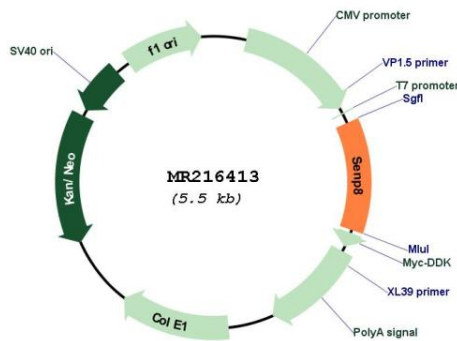
UniProt ID: [Q9D2Z4](#)

Cytogenetics: 9 B

MW: 25.1 kDa

Gene Summary: Protease that catalyzes two essential functions in the NEDD8 pathway: processing of full-length NEDD8 to its mature form and deconjugation of NEDD8 from targeted proteins such as cullins or p53.[UniProtKB/Swiss-Prot Function]

Product images:



Circular map for MR216413