

## Product datasheet for **MR216384**

### Agap3 (NM\_139153) Mouse Tagged ORF Clone

#### Product data:

Product Type:	Expression Plasmids
Product Name:	Agap3 (NM_139153) Mouse Tagged ORF Clone
Tag:	Myc-DDK
Symbol:	Agap3
Synonyms:	AGAP-3; AV028425; Centg3; cnt-g3; Crag; Crag.; MRIP-1
Mammalian Cell Selection:	Neomycin
Vector:	pCMV6-Entry (PS100001)
E. coli Selection:	Kanamycin (25 ug/mL)



[View online »](#)

**ORF Nucleotide Sequence:**

>MR216384 representing NM\_139153  
 Red=Cloning site Blue=ORF Green=Tags(s)

TTTTGTAATACGACTCACTATAGGGCGGCCGGGAATTCGTCGACTGGATCCGGTACCGAGGAGATCTGCC  
 GCC**CGGATCGCC**

ATGAACTTCCAGGCAGGCGGGGCCAGAGTCTCAGCAGCAGCAGAGCCTGGCGGCTCCGGGGACCGCGG  
 GCGGCGGCGGCGGCGGCGGGGGCGGCGGCGAGTTCGGCGGCGGCGGGCCCGGAGCCGGGGTGGCGG  
 CCCCTCGCAGCAGCTGGCTGGCGGCCCCCCCAGCAGTTCGCGCTCTCCAACCTCGGCCGCTATCCGAGCC  
 GAGATCCAACGCTTCGAGTCGGTACACCCCAACATCTACGCCATCTACGACCTGATCGAGCGAATCGAGG  
 ATTTGGCGCTGCAGAACCAGATCCGGGAGCAGTCATCTCCATCGAGGACTCATTGTGAACAGCCAGGA  
 GTGGACCCTGAGCCGCTCTGTGCCAGAGCTTAAAGTGGGCATAGTGGGCAACCTGTCTAGTGGGAAATCA  
 GCCTTGGTTCACCGATATCTGACAGGGACTTATGTCCAGGAAGAGTCCCCTGAAGGGGTCGATTTAAAA  
 AGGAGATTGTAGTGGATGGCCAGAGTTACCTGCTGCTGATCCGGGATGAAGGAGGCCCCCTGAACTCCA  
 GTTTGCTGCCTGGGTGGATGCGGTGGTGTGGTTCAGCCTGGAGGATGAAATCAGCTTCCAGACGGTG  
 TACAACACTTCCCTACGCCCTCTGCAGCTTTCGAAATGCCAGCGAGGTGCCATGGTGTGGTGGGACAC  
 AGGATGCCATCAGTGCCGCCAATCCCCGGGTCAATTGATGACAGCAGGGCCCGCAAACCTGTCCACAGACCT  
 GAAGCGCTGTACCTACTATGAAACATGCGCAACCTATGGGCTCAATGTGGAACGAGTCTTCCAGGACGTG  
 GCCCAGAAGGTGGTAGCCTTGAGGAAGAAGCAGCAGCTGGCGATCGGGCCCTGCAAGTCCCTGCCAACT  
 CACCCAGCCACTCGGCCGTGTGAGTGCCTCCATCCCAGCTGTGCACATCAATCAGGCCACCAACGGAGG  
 CAGCAGCGCCTCAGCGACTACTCGTCCCTCAGTCCCCTCCACCCCTAGCATCAGCCAGCGGGAGCTGCGC  
 ATCGAGACCATCGCTGCCTCCTCACCCCCACGCCATCCGCAAGCAGTCCAAGCGGCGTCTAACATCT  
 TCACGCTCGAAAAGGTGCTGACCTGGACAGGGAGAAGAAAGTGCAGGAGTGCAGATGGCAGCATCGG  
 GAGTGGCCGGCCATCCCCTCAAGCAGGGGATCCTGCTGAAAAGAAGCGGCAAATCCTTGAACAAGGAG  
 TGAAGAAGAAGTATGTGACGCTGTGTGACAACGGGTTGCTTACTTACCACCTAGCCTGCACGATTACA  
 TGCAAAACATCCACGGCAAAGAGATCGACCTCCTACGGACTACGGTGAAGTGCAGGGAAGCGTGTGCC  
 CCGAGCCACACCCACTACAGCCCCAGGCCACAGTCCCCGTGCCAACGGGTTGGCAATGGAGCGGAGTAAC  
 ACACAGCTGGGTGGGGCCACAGGTGCCCCCACTCGGCCAGCAGCACATCCCTGCATTCTGAGCGCCCTC  
 ACAGCTCAGCCTGGGCTGGCTCACGCCCGGCCCGAGGGGCTGCACCAGCGCTCCTGTTCCGTTTCCAG  
 CACTGACCAGTGGAGTGAGGACAGCTGCCCTGCCTGCCAGCATGCAGCACCCCTGCCAGTGGCCAGCTGAG  
 TCACTCAGTTCAGCCCCAAGCTGGAGCCTCCCCATCTCCCCTCCAACCGGAAGAAGCACCGCGGGA  
 AAAAGAGCACCGGACCCCCGACCAGACGGCCCCAGCAGTGTGCTGAAGAGGCAGAGGAGTCTTTGA  
 GTTTGTAGTGGTGTCCCTCACTGGTCAGACCTGGCATTGTTGAGGCCTCAACAGCAGAAGAGCGGGA  
 TGGGTGCAGAGCGTGCAGGCCAAATCCTCGCCAGCCTACAAGGATGTGCGAGCGCAAGGACAAGACTC  
 GGCTGGGGAACCAGAACACAGCCCTGGCGGTGCAGGCTGTCCGCACGGTCCGCGGCAACAGCCTCTGTAT  
 TGACTGTGAAGCCCCAATCCAGACTGGGCCAGCTGAATCTGGGTGCCCTGATGTGTATCGAGTGTCTA  
 GGGATCCACCGACACCTGGGAGCTCACCTGTCCGAGTCCGCTCCTTGGACCTTGACGACTGGCCACCTG  
 AACTGCTGGCCGTGACTGCAATGGGCAACGCTTGGCTAACAGTGTCTGGGAGGGGCTCTGGATGG  
 TTACTTAAGCCAGGCCCGAAGCCTGCAGAGAGGAGAAAGAGCGCTGGATCCGAGCCAAGTATGAGCAG  
 AAGCTCTTCTGGCCCCGCTGCCAAGCTCAGATGTGCCGCTGGGACAGCAGTACTCCGGGCTGTGGTGG  
 AGGATGACCTGCGGCTGCTGGTGTGCTGCTGGCCACGGGTCCAAGGAGGAGTGAACGAGACATACGG  
 GGACGGTGACGGGAGGACAGCCCTGCACCTGTCCAGTGGCATGGCCAATGTGGTGTTCACACAGCTGCTC  
 ATCTGGTACGGGGTGGACGTGAGGAGCCGTGATGCCCCGAGGACTGACCCACTGGCCTATGCCCGTCGTG  
 CCGGCAGCCAGGAGTGTGCAGACATCTTGATCCAGCATGGGTGTCCGGGGAAGGCTGTGGCTTAGCACC  
 CACTCCCAACAGAGAGCTGCCAATGGCACCAACCCCTCCGAGAAGTGCACCGCAGCCCTAGTATCCTA

**ACGCGT**ACGCGGCCGCTCGAGCAGAACTCATCTCAGAAGAGGATCTGGCAGCAAATGATATCCTGGATT  
 ACAAGGATGACGACGATAAGGTTTAA

**Protein Sequence:** >MR216384 representing NM\_139153  
 Red=Cloning site Green=Tags(s)

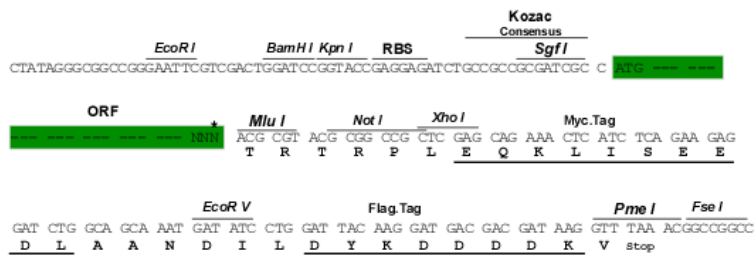
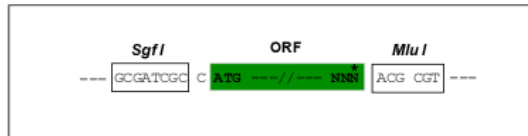
MNFQAGGGQSPQQQSLAAPGTGGGGGGAGGGGQFGGAGPGAGGGGPSQQLAGGPPQFALSNSAAIRA  
 EIQRFSVHPNIYAIYDLIERIEDLALQNQIREHVISIEDSFVNSQEWLRSRVPCLKVIGNLSGKS  
 ALVHRYLTGTYYQEESEPEGRFKKEIVVDGQSYLLLRDEGGPELQFAAWVDVAVFVFSLEDEISFQTV  
 YNYFLRLCSFRNASEVPMVLVGTQDAISAANPRVIDDSRARKLSTDLKRCYYETCATYGLNVERVFQDV  
 AQKVVVALRKKQQLAIGPCKSLPNSPSHSAVSAASIPAVHINQATNGGSSAFSDYSSVSPSTPSISQRELR  
 IETIAASSTPTPIRKQSKRRSNIFTSRKADLDREKAAECRVDSIGSGRAIPIKQIGILLKRSGKSLNKE  
 WKKKYVTLCDNGLLTYHPSLHDYMQNIHGKEIDLLRRTTVKVPKRLPRATPTTAPGTSPRANGLAMERSN  
 TQLGGATGAPHSASSTSLHSERPHSSAWAGSRGPEGLHQRSCSVSSTDQWSEAAALPASMHPASGPAE  
 SLSSSPKLEPPPSPHSNRKKHRGKKSTGTPRPDGPSSAAEEAESEFVAVVSLTGQTWHEASTAEEREL  
 WVQSVQAQILASLQGCRAKDKTRLGNQNTALAVQAVRTVRGNSLCIDCEAPNDWASLNLGALMCIECS  
 GIHRHLGAHLRVRSLLDDWPPELLAVMTAMGNALANSVWEGALDGYSKPGPEACREEKERWIRAKYEQ  
 KLFAPLPSDDVPLGQQLLRAVVEDDLRLVMLLAHGSKEEVNETYGDGDGRTALHLSSAMANVVFQLL  
 IWYGVDRSRDARGLTPLAYARRAGSQECADILIQHGCPGEGCGLAPTPNREPANGTNPSAELHRSPSIL  
 TRTRPLEQKLISEEDLAANDILDYKDDDDKV

**Chromatograms:** [https://cdn.origene.com/chromatograms/mm9103\\_e04.zip](https://cdn.origene.com/chromatograms/mm9103_e04.zip)

**Restriction Sites:** SgfI-MluI

**Cloning Scheme:**

Cloning sites used for ORF Shuttling:

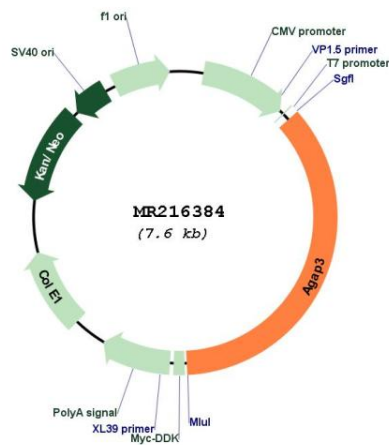


\* The last codon before the Stop codon of the ORF

**ACCN:** NM\_139153

<b>ORF Size:</b>	2730 bp
<b>OTI Disclaimer:</b>	The molecular sequence of this clone aligns with the gene accession number as a point of reference only. However, individual transcript sequences of the same gene can differ through naturally occurring variations (e.g. polymorphisms), each with its own valid existence. This clone is substantially in agreement with the reference, but a complete review of all prevailing variants is recommended prior to use. <a href="#">More info</a>
<b>OTI Annotation:</b>	This clone was engineered to express the complete ORF with an expression tag. Expression varies depending on the nature of the gene.
<b>Components:</b>	The ORF clone is ion-exchange column purified and shipped in a 2D barcoded Matrix tube containing 10ug of transfection-ready, dried plasmid DNA (reconstitute with 100 ul of water).
<b>Reconstitution Method:</b>	<ol style="list-style-type: none"> <li>1. Centrifuge at 5,000xg for 5min.</li> <li>2. Carefully open the tube and add 100ul of sterile water to dissolve the DNA.</li> <li>3. Close the tube and incubate for 10 minutes at room temperature.</li> <li>4. Briefly vortex the tube and then do a quick spin (less than 5000xg) to concentrate the liquid at the bottom.</li> <li>5. Store the suspended plasmid at -20°C. The DNA is stable for at least one year from date of shipping when stored at -20°C.</li> </ol>
<b>RefSeq:</b>	<a href="#">NM_139153.2</a> , <a href="#">NP_631892.2</a>
<b>RefSeq Size:</b>	3207 bp
<b>RefSeq ORF:</b>	2733 bp
<b>Locus ID:</b>	213990
<b>Cytogenetics:</b>	5 A3
<b>MW:</b>	97.7 kDa

**Product images:**



Circular map for MR216384