

Product datasheet for **MR216331**

Fbxl22 (NM_175206) Mouse Tagged ORF Clone

Product data:

Product Type:	Expression Plasmids
Product Name:	Fbxl22 (NM_175206) Mouse Tagged ORF Clone
Tag:	Myc-DDK
Symbol:	Fbxl22
Synonyms:	1110004B15Rik
Mammalian Cell Selection:	Neomycin
Vector:	pCMV6-Entry (PS100001)
E. coli Selection:	Kanamycin (25 ug/mL)
ORF Nucleotide Sequence:	>MR216331 ORF sequence Red=Cloning site Blue=ORF Green=Tags(s)

TTTTGTAATACGACTCACTATAGGGCGCCGGGAATTCGTCGACTGGATCCGGTACCGAGGAGATCTGCC
GCC**CGATCGCC**

ATGCACATAACCCAGCTCAATCGGGAGTGTCTGCTGTGTCTTCTCCTTCTGGACAAGGACAGCCGGA
GGAGCCTCTCCAGGACTTGCTCCAGCTCCGAGATGTGTTTGAGGACCCACCCTCTGGCCCTGCTGCA
CTTCCATTCTCTCGCAGAGCTCAAGAAAGACAACCTCCGGCTGAGCCCTGCGCTGCGCAGCCTGTCCATC
TGTTGGCATTCCAGCCGTGTGCAGGTGTGCAGCATCGAGGACTGGCTCAAGAGCGCCCTCCAGAGGAGCA
TCTGCAGCCAGCAGAGAGCCTGGTTAATGATTTCTCCTGTCAGGTGTGCAACAGGTGCCCAACCTGAC
GTCCGTACGCTGTGGGCTGCGGCCAGGTACGGACGACTGCCTGGCGCGCTTGTCTGCTCAGCTGCCCG
CGCCTGCGTACGCTGCGCCTCGAGAACTGCGCGCGCTTACCAACCGCACGCTGGCGGCCGTGGCCGCGC
ACGGGCGCGCGCTGCAGACTCTGCACGTGGACTTCTGCCGAACGTGAGCGCCGCGGCCTGCTCCGCT
CCGCGCCGCTGCCGAACCTGCGCCTCAGCGCCGAACGAGCGCGGCCATGATACCCGATCAGCCGCCG
CGCGCACGCTGTGCGCTGCCTCAGCTTCTCGGCTGCACCGGGAGACAAAGCATGCCTACCCACGG
GCTCCTAC

AG**CGGACCG**ACGCGTACGCGCCGCTCGAGCAGAACTCATCTCAGAAGAGGATCTGGCAGCAAATGATATCC
TGGATTACAAGGATGACGACGATAAGGTTTAA



[View online »](#)

Protein Sequence: >MR216331 protein sequence
Red=Cloning site Green=Tags(s)

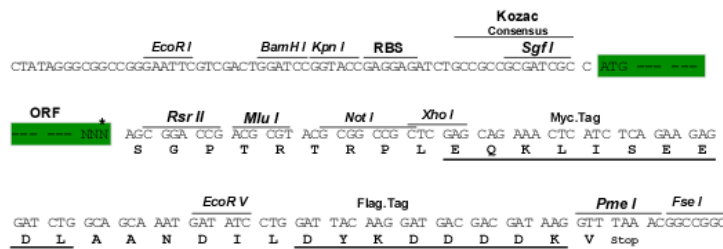
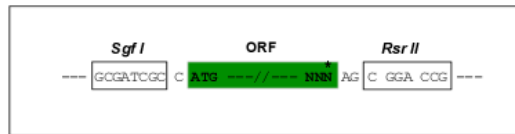
MHITQLNRECLLCLFSLDKDSRRSLRSTCSQLRDVFDPTLWPLLHFHSLAELKKNDFRLSPALRSLSI
 CWHSSRVQVCSIEDWLKALQRSICSQHESLVNDFLLQVCNRCPNLTSVTLSGCGHVTDDCLARLLLSCP
 RLRTLRLENCARVTNRTLAAVAAHGRALQTLHVDFCRNVSAAGLLRLRAACPRLRLSAERSAAMIPDQPP
 RARVCAASAFSAAPGRQSMHPHTGSY

SGPTRTRPLEQKLI SEEDLAANDILDYKDDDDKV

Restriction Sites: SgfI-RsrII

Cloning Scheme:

Cloning sites used for ORF Shuttling:



* The last codon before the Stop codon of the ORF

ACCN: NM_175206

ORF Size: 711 bp

OTI Disclaimer: The molecular sequence of this clone aligns with the gene accession number as a point of reference only. However, individual transcript sequences of the same gene can differ through naturally occurring variations (e.g. polymorphisms), each with its own valid existence. This clone is substantially in agreement with the reference, but a complete review of all prevailing variants is recommended prior to use. [More info](#)

OTI Annotation: This clone was engineered to express the complete ORF with an expression tag. Expression varies depending on the nature of the gene.

Components: The ORF clone is ion-exchange column purified and shipped in a 2D barcoded Matrix tube containing 10ug of transfection-ready, dried plasmid DNA (reconstitute with 100 ul of water).

Reconstitution Method:

1. Centrifuge at 5,000xg for 5min.
2. Carefully open the tube and add 100ul of sterile water to dissolve the DNA.
3. Close the tube and incubate for 10 minutes at room temperature.
4. Briefly vortex the tube and then do a quick spin (less than 5000xg) to concentrate the liquid at the bottom.
5. Store the suspended plasmid at -20°C. The DNA is stable for at least one year from date of shipping when stored at -20°C.

RefSeq: [NM_175206.4](#), [NP_780415.1](#)

RefSeq Size: 3935 bp

RefSeq ORF: 711 bp

Locus ID: 74165

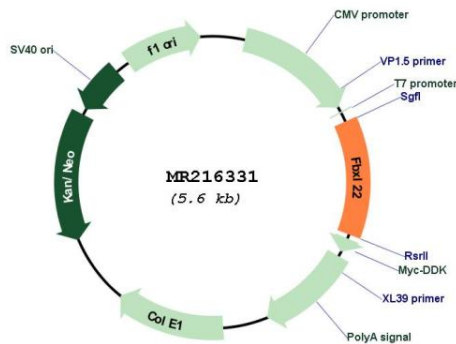
UniProt ID: [Q8C7B6](#)

Cytogenetics: 9 C

MW: 26.3 kDa

Gene Summary: Substrate-recognition component of the SCF (SKP1-CUL1-F-box protein)-type E3 ubiquitin ligase complex. Promotes ubiquitination of sarcomeric proteins alpha-actinin-2 (ACTN2) and filamin-C (FLNC) (By similarity).[UniProtKB/Swiss-Prot Function]

Product images:



Circular map for MR216331