

Product datasheet for **MR216315**

Prpf31 (NM_001159714) Mouse Tagged ORF Clone

Product data:

Product Type:	Expression Plasmids
Product Name:	Prpf31 (NM_001159714) Mouse Tagged ORF Clone
Tag:	Myc-DDK
Symbol:	Prpf31
Synonyms:	1500019O16Rik; 2810404O06Rik; AW554706; PRP31; RP11
Vector:	pCMV6-Entry (PS100001)
E. coli Selection:	Kanamycin (25 ug/mL)
Cell Selection:	Neomycin



[View online »](#)

ORF Nucleotide Sequence:

>MR216315 ORF sequence
 Red=Cloning site Blue=ORF Green=Tags(s)

TTTTGTAATACGACTCACTATAGGGCGGCCGGAATTCGTCGACTGGATCCGGTACCGAGGAGATCTGCC
 GCC**CGGATCGCC**

ATGTCTCTGGCTGATGAGCTCTTGGCTGACCTCGAGGAGGCAGCAGAAGAAGAGGAAGGAGGAAGCTATG
 GAGAAGAGGAGGAGGAGCCAGCAATTGAGGATGTACAGGAGGAGACCCAGCTGGATCTTTCTGGAGATTC
 AGTCAAGAGCATTGCCAAGCTATGGGACAGCAAGATGTTTGTGAGATCATGATGAAGATTGAGGAGTAT
 ATCAGCAAGCAAGCCAACGTGTCGGAAGTGATGGGACCACTGGAGGCAGCTCCTGAGTACCGAGTCATTG
 TGGATGCCAACAACTGACTGTGGAGATAGAAAATGAGCTGAACATTATCCACAAGTTTATCCGGGATAA
 AACTCAAAGAGATTCCCTGAGCTAGAATCCTTGGTGCCCAATGCTCTGGATTACATCCGCACAGTCAAG
 GAGCTGGCAACAGCCTGGATAAGTGAAGAACAATGAGAACCTCCAGCAGATCCTGACCAATGCTACTA
 TCATGGTTGTTAGTGTCACTGCCTCTACTACCCAGGGGCAGCAGCTGTCGGATGAGGAGCTAGAGCGGCT
 AGAGGAGGCTGTGACATGGCACTGGAGCTGAATGCCTCCAACACCGCATCTATGAGTATGTGGAGTCC
 CGGATGTCCTTATTGCACCCAATTGTCCATCATCATTGGAGCATCCACAGCTGCCAAGATCATGGGTG
 TGGCTGGAGGGCTCACCAACCTCTAAGATGCCTGCCTGCAACATCATGCTGCTGGGAGCCAGCGCAA
 GACCCTGTCTGGCTTCTTCTACCTCAGTGTTCCTCATACTGGTTATATCTACCACAGTGACATTGTG
 CAGTCTCTGCCCCAGATCTCCGGCGGAAGGCGGCCCGCTAGTGGTGCCAAGTGTACTGTCAGCTC
 GTGTGGACAGCTTCCATGAGAGCACAGAAGGGAAGGATGAGATTGAGCGCAAATTTGATAAGTGGCAGGA
 GCCACCACCGTGAAGCAGGTGAAGCCCCTGCCTGCACCCCTTGATGGGAGCGGAAGAAGCAGGGGGC
 CGAAGGTACCGCAAGATGAAGGAACGGCTAGGACTGACGGAGATCCGGAAGCAGGCCAACCGCATGAGT
 TTGGAGAGATTGAGGAGGATGCCTATCAGGAAGACCTGGGCTTTAGCCTGGGCCACTTGGGCAAGTCAAG
 CAGTGGGCGTGTGCGGCAGACCCAGGTGAATGAGGCCACCAAGGCCAGGATCTCCAAGACACTGACGCGG
 ACCTTACAGAAACAGAGCGTGGTGTATGGTGGGAAGTCAACAATTCGTGACCGCTCCTCAGGGACTGCCT
 CCAGTGTGGCCTTCACTCACTCCAGGGCTAGAGATTGTGAACCCACAAGCAGCCGAGAAGAAGGTGGC
 AGAGGCCAACAGAAGTATTTCTCTAGCATGGCCGAGTTCCTCAAGGTCAAGGGTGAGAAAAGTGGCACC
 ATGTCTACC

ACGCGTACGCGGCCGCTCGAGCAGAACTCATCTCAGAAGAGGATCTGGCAGCAAATGATATCTGGATT
 ACAAGGATGACGACGATAAGGTTTAA

Protein Sequence:

>MR216315 protein sequence
 Red=Cloning site Green=Tags(s)

MSLADELLADLEEAEEEEEGGSYEEEEPAIEDVQEETQLDLSGDSVKSIAKLWDSKMF AEIMMKIEEY
 ISKQANVSEVMGPVEAAPEYRVIDANNLTVEIENELNIHKFIRDKYSKRFPELES LVPNALDYIRTVK
 ELGNSLDKCKNNENLQQILTNATIMVSVTASTTQGGQLSDEELERLEEACDMALELNASKHRIEYVES
 RMSFIAPNLSIIIGASTAAKIMGVAGGLTNLSKMPACNIMLLGAQRKTLSGFSSTSVLPHTGYIYHSDIV
 QSLPPDLRRKAARLVAAKCTLAARVDSFHSTEGKDEIERKFDKWQEPVPPVQVQKPLPAPLDGQRKRRGG
 RRYRKMKERLGLTEIRKQANRMSFGEIEEDAYQEDLGFSLGHLGKSGSGRVRQTQVNEATKARISKTLQR
 TLQKQSVVYGGKSTIRDRSSGTASSVAFTPLQGLEIVNPQAAEKVVAEANQKYFSSMAEFLKVKGEKSGT
 MST

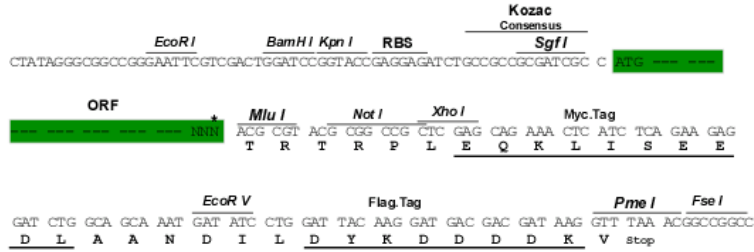
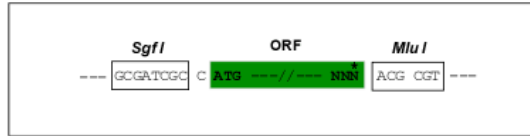
TRTRPLEQKLISEEDLAANDILDYKDDDDKV

Restriction Sites:

SgfI-MluI

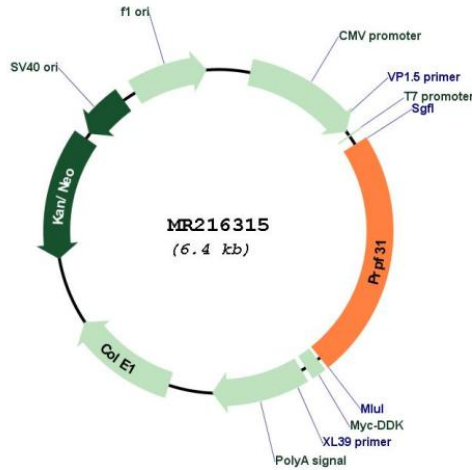
Cloning Scheme:

Cloning sites used for ORF Shutting:



* The last codon before the Stop codon of the ORF

Plasmid Map:



ACCN: NM_001159714

ORF Size: 1479 bp

OTI Disclaimer: The molecular sequence of this clone aligns with the gene accession number as a point of reference only. However, individual transcript sequences of the same gene can differ through naturally occurring variations (e.g. polymorphisms), each with its own valid existence. This clone is substantially in agreement with the reference, but a complete review of all prevailing variants is recommended prior to use. [More info](#)

OTI Annotation: This clone was engineered to express the complete ORF with an expression tag. Expression varies depending on the nature of the gene.

Components: The ORF clone is ion-exchange column purified and shipped in a 2D barcoded Matrix tube containing 10ug of transfection-ready, dried plasmid DNA (reconstitute with 100 ul of water).

Reconstitution Method:	<ol style="list-style-type: none">1. Centrifuge at 5,000xg for 5min.2. Carefully open the tube and add 100ul of sterile water to dissolve the DNA.3. Close the tube and incubate for 10 minutes at room temperature.4. Briefly vortex the tube and then do a quick spin (less than 5000xg) to concentrate the liquid at the bottom.5. Store the suspended plasmid at -20°C. The DNA is stable for at least one year from date of shipping when stored at -20°C.
RefSeq:	<u>NM_001159714.1, NP_001153186.1</u>
RefSeq Size:	3125 bp
RefSeq ORF:	1482 bp
Locus ID:	68988
UniProt ID:	<u>Q8CCF0</u>
Cytogenetics:	7 A1
MW:	54.7 kDa
Gene Summary:	Involved in pre-mRNA splicing as component of the spliceosome. Required for the assembly of the U4/U5/U6 tri-snRNP complex, one of the building blocks of the spliceosome. [UniProtKB/Swiss-Prot Function]