

## Product datasheet for **MR216292**

### Slitrk2 (NM\_198863) Mouse Tagged ORF Clone

#### Product data:

Product Type:	Expression Plasmids
Product Name:	Slitrk2 (NM_198863) Mouse Tagged ORF Clone
Tag:	Myc-DDK
Symbol:	Slitrk2
Synonyms:	A930040J07
Mammalian Cell Selection:	Neomycin
Vector:	pCMV6-Entry (PS100001)
E. coli Selection:	Kanamycin (25 ug/mL)



[View online »](#)

ORF Nucleotide  
Sequence:

>MR216292 representing NM\_198863  
 Red=Cloning site Blue=ORF Green=Tags(s)

TTTTGTAATACGACTCACTATAGGGCGGCCGGGAATTCGTCGACTGGATCCGGTACCGAGGAGATCTGCC  
 GCC**CGGATCGCC**

ATGCTGAGCGCGCTTTGGTTCCCTCAGTGTGTTAACAGTGGCCGGGATCTTACAGACCAGAGTGCAGAAA  
 CTGCCAAAGACATTTGCAAGATCCGCTGCTTGTGCGAAGAGAAGGAAAACGTAATATTAACCTGTGA  
 AAACAAAGGATTTACAACGTGTCAGTTTGCCTTCAACCCCCCAGTATCGCATCTATCAGCTGTTTCTCAAC  
 GAAACCTCTTGACCAGACTGTATCCAATGAGTTGTCAATTATTCAAATGCGGTGACTCTTCATCTAG  
 GTAACAATGGGCTGCAGGAGATCCGACCTGGGGCATTAGTGGTCTGAAAACCTCTCAAAGACTGCACCT  
 CAATAACAACAACTGGAGGATTGCGAGAGGACACTTTTCTAGGCCTAGAGAGTCTGGAGTACCTCCA  
 GCTGACTACAATTACATCAGCACCATCGAGGCAGGGCATTAGCAAACTGAATAAGCTGAAAGTACTCA  
 TCCTGAATGACAACCTTTTGTGCTTTTGCAGTAATGTGTTTCGGTTTGTCTGCTGACTCACTTAGA  
 CCTGAGGGGAAACAGGTTGAAAGTAATGCCTTTTGTGCTGCTTGAACATATTGGAGGAATCATGGAA  
 ATTCAGCTGGAAGAAAACCCGTGGAATTGCACCTGTGACTTACTCTCAAGGCATGGCTGGACACCA  
 TTAAGTGTGTTTGTGGGGGAGATTGTCTGTGAAACCCCTTTCAGGTTACATGGGAAAGATGTGACCCAGT  
 GACCAGACAAGACCTCTGTCCCAGAAAAGTGAAGTGGTATTCTAGTCAGAGGAGCAGCCATTGAGAC  
 ACACATGTTCAAAGGCTGACCCCTACAACAAATCCTGCTCTCAACCAACAGAGCTCCAAAAGCCAGCC  
 GGCCACCCAAAATGAGAAATCGTCCGACTCCTCGAGTACTGTGTCAAAGACCAGGAGCTTTGGCC  
 GATCATGGTGTACCAGACCAAGTCCCGTGGCCCTCACCTGTCCAGCAGCTGTGTCTGACTTCTCAG  
 AGCTCAGACAATGGTCTAAATGTGAATTGCCAAGAAAGGAAGTCACTAACATCTCTGACCTACAGCCCA  
 AACCTACCAGTCCAAAGAACTACCTAACAGGGAATCTCCAAACAGTCTATAAGAAATGACCTTT  
 AGAATACAGTTCACTGGATTTGTTGCATTTAGGAAACAACAGGATTGCAGTCATTAGGAAGGTGCCTTT  
 ACAACCTGACCAGTTTACGAAGACTTTATCTGAATGGCAATTACCTTGAAGTGTGTATCCTTCTATGT  
 TTGATGGACTGCAGAGCTTGCAGTATCTCTATTTAGAGTATAATGTCATTAAGGAAATTAAGCCTGTGAC  
 CTTTGTGCTTTGATTAACCTCCAGCTCCTGTTTCTGAATAACAACCTGTGAGGTCCTTACCTGATAAT  
 ATATTTGGGGGCACAGCCCTCACCAGGCTGAATCTGAGAAACAATCATTTTTCTCACCTGCCTGTGAAAG  
 GGGTCTGGACCAGCTTCTGCTTTTATCCAGATAGATCTGCAAGAGAACCCATGGGACTGCACCTGTGA  
 CATCATGGGCTAAAGGACTGGACCGAACATGCCAATTCTCCTGTATCATCAATGAGGTGACTTGTGAG  
 TCTCCCGCTAAGCATGCAGGGGAGATACTGAAATTCCTGGGAAGGAGGCTATTTGTCCAGAAAATCCTA  
 ACCTGTCAGATGGGACTATTTTGTCAATGAATCACAACACAGACACACCTAGATCACTTAGTGTGTCTCC  
 TAGTTCTTACCCGAACTACACACTGAAGTTCCTCTCCGTTTTAATTTAGGATTGCTTGTGTTTTT  
 ATCCTGTCTGTCTGTTTTGGGGCGGGTGTTCGCTTTTGTCTGAAGCGTCGAAAGGGAGTGCCAAATG  
 TTCCCAGGAATGCCACCAACTTAGATGTAAGTTCCTTCCAGTTACAATATGGGTCTTACAACACCCGAGAC  
 TAATGATAAAGCTGATGGCCACGTCTATAACTACATTCTCCACCTGTGGGTGAGATGTGCCAAAACCC  
 ATCTACATGCAGAAGGAAGGAGACCCAGTGGCCTATTACCGAAATCTGCAGGACTTCAGCTATGGCAACC  
 TGGAGGAAAAAAGAAGAACCTGCCACACTTGCTTACACAATAAGTGCCACTGAGTTGCTAGAAAAACA  
 GGCCACACCAAGAGAGCCTGAGCTGCTGTATCAGAATATTGCTGAGCGAGTTAAGAAGTCCCAAGTGA  
 GGCTAGTCCACTATAACTTTTGTACCTTACCTAAAAGGCAAGTTGCCCCCTCATATGAATCTCGACGCC  
 AAAACCAAGACAGAATCAATAAAACCGTTTTATATGGGACTCCCAGAAAATGCTTTTGTGGGGCAGTCAAA  
 GCCAGACCACCTTTACTGCAAGCTAAACCGCAATCGGAACAGACTACCTCGAAGTTCTGGAAAAACAA  
 ACTGCAATCAGTCAGCTG

**ACGCGT**ACGCGGCCGCTCGAGCAGAACTCATCTCAGAAGAGGATCTGGCAGCAATGATATCCTGGATT  
 ACAAGGATGACGACGATAAGGTTTAA

Protein Sequence: >MR216292 representing NM\_198863  
 Red=Cloning site Green=Tags(s)

MLSGVWFLSVLTVAGILQTESRKTAKDICKIRCLCEEKENVLNINCENKGFTTVSLQLPPQYRIYQLFLN  
 GNLLTRLYPNEFVNYSNAVTLHLGNGLQEIRPGAFSGLKTLKRLHLNNKLEVLREDTFLGLESLEYLQ  
 ADYNYISTIEAGAFSKLNKLVILNDNLLSLPSNVFRFVLLTHLDRGNRLKVMPPFAGVLEHIGGIME  
 IQLEENPNWCTCDLLPLKAWLDTITVFVGEIVCETPFRLHGKDVTLTRQDLCPRKASAGDSSQRSSHSD  
 THVQRLPPTTNPALNPTRAPKASRPPKMRNRPTPRVTVSKDRQSFGPIMVYQTKSPVALTCPSSCVTSQ  
 SSDNGLNVNCQERKFTNISDLQPKPTSPKKLYLTGNYLQTVYKNDLLEYSSLDLLHLGNRIAVIQEGAF  
 TNLTSRRLYLNGNYLEVLYPSMFDGLQSLQYLYLEYNVIKEIKPLTFDALINLQLLFLNNLLRSLPDN  
 IFGGTALTRLNLRNNHFSHLPVKGVLQDLPAFIQIDLQENPWDCTCDIMGLKDWTEHANSPIINEVTCE  
 SPAKHAGEILKFLGREAI CPENPNLSDGTILSMNHNTDTPRSLSVSPSSYPELHTEVPLSVLILGLLVF  
 ILSVCFGAGL FVFLKRRKGVNPNRNATNLDVSSFQLQYGSYNTETNDKADGHVYNYIPPPVGMQCNP  
 IYMQKEGDPVAYYRNLDQFSYGNLEEKKEEPATLAYTISATELLEKQATPREPELLYQNI AERVKELPSA  
 GLVHYNFCTLPKRQFAPSYESRRQNQDRINKTVLYGTPRKCFVGQSKPDHPLLQAKPQSEPDYLEVLEKQ  
 TAISQL

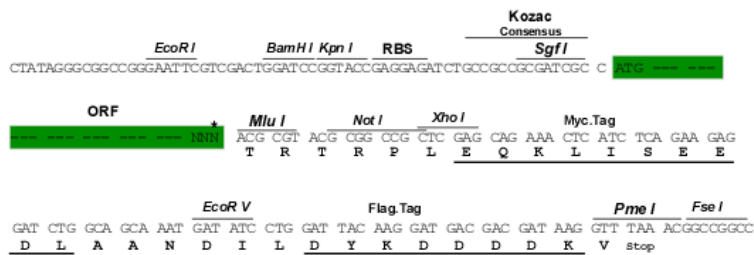
TRTRPLEQKLISEEDLAANDILDYKDDDDKV

Chromatograms: [https://cdn.origene.com/chromatograms/mm9003\\_f06.zip](https://cdn.origene.com/chromatograms/mm9003_f06.zip)

Restriction Sites: SgfI-MluI

Cloning Scheme:

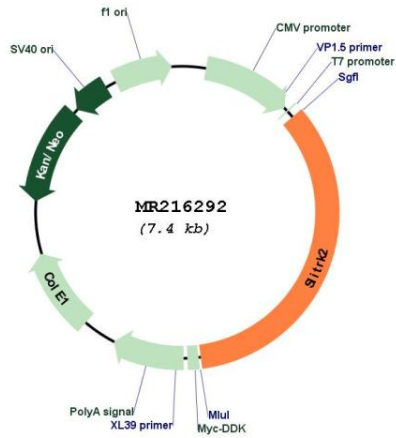
Cloning sites used for ORF Shuttling:



\* The last codon before the Stop codon of the ORF

<b>ACCN:</b>	NM_198863
<b>ORF Size:</b>	2538 bp
<b>OTI Disclaimer:</b>	<p>Due to the inherent nature of this plasmid, standard methods to replicate additional amounts of DNA in E. coli are highly likely to result in mutations and/or rearrangements. Therefore, OriGene does not guarantee the capability to replicate this plasmid DNA. Additional amounts of DNA can be purchased from OriGene with batch-specific, full-sequence verification at a reduced cost. Please contact our customer care team at <a href="mailto:custsupport@origene.com">custsupport@origene.com</a> or by calling 301.340.3188 option 3 for pricing and delivery.</p> <p>The molecular sequence of this clone aligns with the gene accession number as a point of reference only. However, individual transcript sequences of the same gene can differ through naturally occurring variations (e.g. polymorphisms), each with its own valid existence. This clone is substantially in agreement with the reference, but a complete review of all prevailing variants is recommended prior to use. <a href="#">More info</a></p>
<b>OTI Annotation:</b>	This clone was engineered to express the complete ORF with an expression tag. Expression varies depending on the nature of the gene.
<b>Components:</b>	The ORF clone is ion-exchange column purified and shipped in a 2D barcoded Matrix tube containing 10ug of transfection-ready, dried plasmid DNA (reconstitute with 100 ul of water).
<b>Reconstitution Method:</b>	<ol style="list-style-type: none"> <li>1. Centrifuge at 5,000xg for 5min.</li> <li>2. Carefully open the tube and add 100ul of sterile water to dissolve the DNA.</li> <li>3. Close the tube and incubate for 10 minutes at room temperature.</li> <li>4. Briefly vortex the tube and then do a quick spin (less than 5000xg) to concentrate the liquid at the bottom.</li> <li>5. Store the suspended plasmid at -20°C. The DNA is stable for at least one year from date of shipping when stored at -20°C.</li> </ol>
<b>RefSeq:</b>	<a href="#">NM_198863.2</a> , <a href="#">NP_942563.2</a>
<b>RefSeq Size:</b>	7754 bp
<b>RefSeq ORF:</b>	2541 bp
<b>Locus ID:</b>	245450
<b>UniProt ID:</b>	<a href="#">Q810C0</a>
<b>Cytogenetics:</b>	X A7.1
<b>MW:</b>	95.9 kDa
<b>Gene Summary:</b>	It is involved in synaptogenesis (PubMed:25989451). Promotes excitatory synapse differentiation (By similarity). Suppresses neurite outgrowth (PubMed:14550773). [UniProtKB/Swiss-Prot Function]

Product images:



Circular map for MR216292