

## Product datasheet for MR216251

### Rpf1 (NM\_027332) Mouse Tagged ORF Clone

#### Product data:

Product Type: Expression Plasmids  
 Product Name: Rpf1 (NM\_027332) Mouse Tagged ORF Clone  
 Tag: Myc-DDK  
 Symbol: Rpf1  
 Synonyms: 2210420E24Rik; 2310066N05Rik; Bxdc5  
 Vector: pCMV6-Entry (PS100001)  
 E. coli Selection: Kanamycin (25 ug/mL)  
 Cell Selection: Neomycin  
 ORF Nucleotide Sequence: >MR216251 representing NM\_027332  
 Red=Cloning site Blue=ORF Green=Tags(s)

TTTTGTAATACGACTCACTATAGGGCGCCGGAATTCGTCGACTGGATCCGGTACCGAGGAGATCTGCC  
 GCC**CGATCGCC**

ATGGCGAAGGCCGCGAGAAAAGTGTGGTGGCGGCAAGCGAGGCTTGAAGAGGAAAGCTGCCGCTGAAG  
 AGCCTCAAGAGGCTGCGCCGCGAGCGATGGGACGGCGGAGCGGGTGCAGCCCGCAAAGCGGCCGC  
 CTTCCCCCGGGTTCAGTATCTCGGAGATTAAGAACAAGCAGCGCGACACTTGATGTTACCGCGTGG  
 AAACAGCAGCAGCGGAAGGAAAAGTTGGCAGCTAAGAAAAAATTAAGGAGAGAGAGGCTCTTGCCG  
 ATAAGGCTCCACAAAGCCTGTTCCAAGACCATTGACAACCAGCGCTTACGACGAGACCACAGTAGA  
 CCCCAATGATGAAGAGGTGGCTTACGATGAAGCGACGGATGAATTTGCTTCTTACTTCAACAGACAGACG  
 TCTCCTAAGATTCTATCACAACGTCAGATAGACCTCATGGGAGAACAGTTTCGACTCTGTGAGCAGCTCT  
 CAACAGTTATACCAGATTCACATGTTTATTACAGACGAGGACTGGCTCTGAAAAAATTATCCCACAGTG  
 CATTGCAAGAGATTTACAGACCTGATCGTTATTAATGAAGATCGTAAACACCGAGTATCCTTTGGATT  
 TCATT

**ACGCGT**ACGCGGCCGCTCGAGCAGAAACTCATCTCAGAAGAGGATCTGGCAGCAAATGATATCCTGGATT  
 ACAAGGATGACGACGATAAGGTTTAA



[View online »](#)

Protein Sequence: >MR216251 representing NM\_027332  
 Red=Cloning site Green=Tags(s)

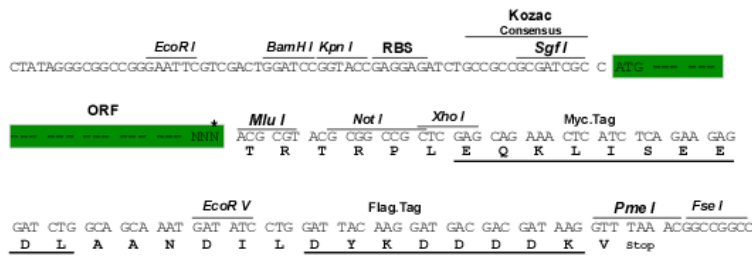
MAKAGEKSVGGGKRGLKRKAAAEEPQAAAAASDGTAESGVQPAKAAAFPPGFSISEIKNKQRRHLMFTRW  
 KQQQRKEKLAAKKKLKKEREALGDKAPPKVPKTDNQRVYDETTVPDNEEVAYDEATDEFASYFNRT  
 SPKILITTSDRPHGRTVRLCEQLSTVIPDSHVYYRRGLALKKIIPQCIARDFDLIVINEDRKTSPILWISF

TRTRPLEQKLISEEDLAANDILDYKDDDDKV

Restriction Sites: Sgfl-MluI

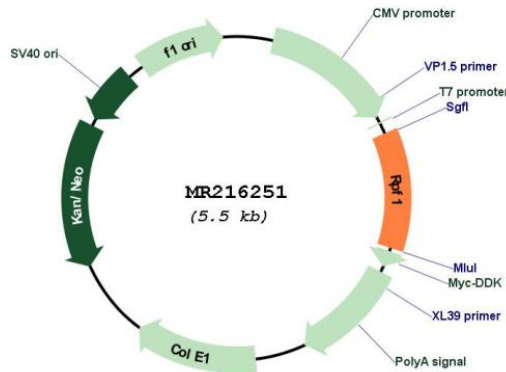
Cloning Scheme:

Cloning sites used for ORF Shuttling:



\* The last codon before the Stop codon of the ORF

Plasmid Map:



ACCN: NM\_027332

ORF Size: 636 bp

<b>OTI Disclaimer:</b>	The molecular sequence of this clone aligns with the gene accession number as a point of reference only. However, individual transcript sequences of the same gene can differ through naturally occurring variations (e.g. polymorphisms), each with its own valid existence. This clone is substantially in agreement with the reference, but a complete review of all prevailing variants is recommended prior to use. <a href="#">More info</a>
<b>OTI Annotation:</b>	This clone was engineered to express the complete ORF with an expression tag. Expression varies depending on the nature of the gene.
<b>Components:</b>	The ORF clone is ion-exchange column purified and shipped in a 2D barcoded Matrix tube containing 10ug of transfection-ready, dried plasmid DNA (reconstitute with 100 ul of water).
<b>Reconstitution Method:</b>	<ol style="list-style-type: none"><li>1. Centrifuge at 5,000xg for 5min.</li><li>2. Carefully open the tube and add 100ul of sterile water to dissolve the DNA.</li><li>3. Close the tube and incubate for 10 minutes at room temperature.</li><li>4. Briefly vortex the tube and then do a quick spin (less than 5000xg) to concentrate the liquid at the bottom.</li><li>5. Store the suspended plasmid at -20°C. The DNA is stable for at least one year from date of shipping when stored at -20°C.</li></ol>
<b>RefSeq:</b>	<a href="#">NM_027332.3</a> , <a href="#">NP_081608.1</a>
<b>RefSeq Size:</b>	1990 bp
<b>RefSeq ORF:</b>	639 bp
<b>Locus ID:</b>	70285
<b>UniProt ID:</b>	<a href="#">Q7TND5</a>
<b>Cytogenetics:</b>	3 H2
<b>MW:</b>	24.2 kDa
<b>Gene Summary:</b>	May be required for ribosome biogenesis.[UniProtKB/Swiss-Prot Function]