

Product datasheet for MR216229

Hoxc6 (NM_010465) Mouse Tagged ORF Clone

Product data:

Product Type:	Expression Plasmids
Product Name:	Hoxc6 (NM_010465) Mouse Tagged ORF Clone
Tag:	Myc-DDK
Symbol:	Hoxc6
Synonyms:	Hox-3.3; Hox-6.1
Mammalian Cell Selection:	Neomycin
Vector:	pCMV6-Entry (PS100001)
E. coli Selection:	Kanamycin (25 ug/mL)
ORF Nucleotide Sequence:	>MR216229 ORF sequence Red=Cloning site Blue=ORF Green=Tags(s)

TTTTGTAATACGACTCACTATAGGGCGGCCGGAATTCGTCGACTGGATCCGGTACCGAGGAGATCTGCC
GCC**CGATCGCC**

ATGAATTCCTACTTCACTAACCCCTTCCTTATCCTGCCACCTCGCCGGGGCCAGGACGTCCTCCCAACG
TCGCCCTCAATCCACCGCCTATGATCCAGTGAGGCATTTCTCGACCTATGGAGCAGCCGTAGCTCAGAA
CCGGATCTACTCGACTCCCTTTTATTCGCCACAGGAGAATGTCGTGTTCCAGTCCAGCCGGGGCCGTAT
GACTATGGATCTAATTCCTTTTACCAGGAGAAAGACATGCTCTCAAACCTGCAGACAAAACACCTTAGGAC
ATAACACACAGACCTCAATCGCTCAGGATTTTAGTTCTGAGCAGGGCAGGACTGCGCCCCAGGACCAGAA
AGCCAGTATCCAGATTTACCCCTGGATGCAGCAATGAATTCGCACAGTGGGGTCGGTTACGGAGCGGAC
CGGAGGGCGGCCGCGCAGATCTACTCTCGTACCAGACCCTGGAACCTGGAGAAGGAATTTCACTTCAACC
GCTACCTAACTCGGCGCCGGCGCATCGAGATCGCCAATGCTCTGTGCCTGACCGAGCGACAGATCAAAAT
CTGGTTCCAGAACCGCCGCATGAAGTGGAAAAAGAATCTAATCTCACGTCCACACTCTCAGGGGTGGC
GGAGGGGCAACCGCCGACAGCCTGGGAGGAAAAGAGGAAAAGCGAGAAGAGACAGAAGAAGAGAAGCAGA
AAGAG

ACGCGTACGCGGCCGCTCGAGCAGAACTCATCTCAGAAGAGGATCTGGCAGCAAATGATATCCTGGATT
ACAAGGATGACGACGATAAGGTTTAA



[View online »](#)

Protein Sequence: >MR216229 protein sequence
Red=Cloning site Green=Tags(s)

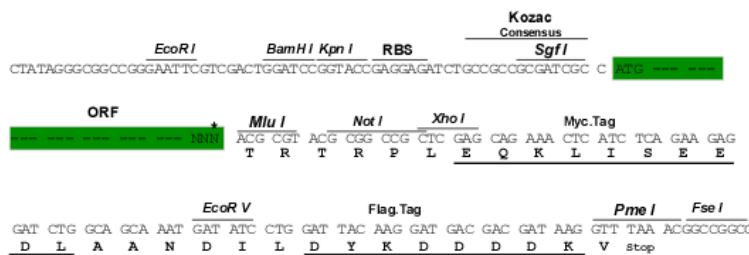
MNSYFTNPSSLCHLAGGQDVLPNVALNSTAYDPVRHFSTYGAAVAQNRIYSTPFYSPQENVVFSSSRGPY
 DYGSNSFYQEKDMLSNCRQNTLGHNTQTSIAQDFSSEQGRAPQDQKASIQIYPWMQRMNSHSGVGYGAD
 RRRGRQIYSRYQTLELEKEFHFNRYL TRRRRIEIANALCLTERQIKIWFQNRMMKWKESNLTSTLSGGG
 GGATADSLGGKEEKRETEEEKQKE

TRTRPLEQKLISEEDLAANDILDYKDDDDKV

Restriction Sites: SgfI-MluI

Cloning Scheme:

Cloning sites used for ORF Shuttling:



* The last codon before the Stop codon of the ORF

ACCN: NM_010465

ORF Size: 708 bp

OTI Disclaimer: The molecular sequence of this clone aligns with the gene accession number as a point of reference only. However, individual transcript sequences of the same gene can differ through naturally occurring variations (e.g. polymorphisms), each with its own valid existence. This clone is substantially in agreement with the reference, but a complete review of all prevailing variants is recommended prior to use. [More info](#)

OTI Annotation: This clone was engineered to express the complete ORF with an expression tag. Expression varies depending on the nature of the gene.

Components: The ORF clone is ion-exchange column purified and shipped in a 2D barcoded Matrix tube containing 10ug of transfection-ready, dried plasmid DNA (reconstitute with 100 ul of water).

Reconstitution Method:

1. Centrifuge at 5,000xg for 5min.
2. Carefully open the tube and add 100ul of sterile water to dissolve the DNA.
3. Close the tube and incubate for 10 minutes at room temperature.
4. Briefly vortex the tube and then do a quick spin (less than 5000xg) to concentrate the liquid at the bottom.
5. Store the suspended plasmid at -20°C. The DNA is stable for at least one year from date of shipping when stored at -20°C.

RefSeq: [NM_010465.2](#), [NP_034595.2](#)

RefSeq Size: 1592 bp

RefSeq ORF: 708 bp

Locus ID: 15425

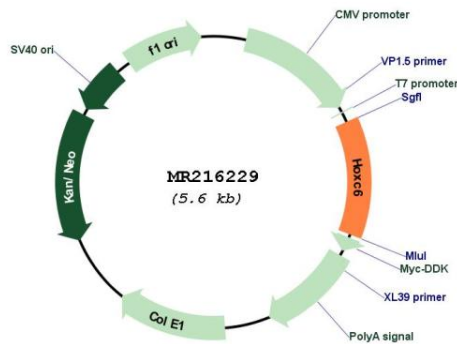
UniProt ID: [P10629](#)

Cytogenetics: 15 58.06 cM

MW: 26.9 kDa

Gene Summary: Sequence-specific transcription factor which is part of a developmental regulatory system that provides cells with specific positional identities on the anterior-posterior axis.
[UniProtKB/Swiss-Prot Function]

Product images:



Circular map for MR216229