

## Product datasheet for MR216126

### Pcyt1b (NM\_177546) Mouse Tagged ORF Clone

#### Product data:

Product Type:	Expression Plasmids
Product Name:	Pcyt1b (NM_177546) Mouse Tagged ORF Clone
Tag:	Myc-DDK
Symbol:	Pcyt1b
Synonyms:	AW045697; CTTbeta
Mammalian Cell Selection:	Neomycin
Vector:	pCMV6-Entry (PS100001)
E. coli Selection:	Kanamycin (25 ug/mL)
ORF Nucleotide Sequence:	>MR216126 representing NM_177546 Red=Cloning site Blue=ORF Green=Tags(s)

TTTTGTAATACGACTCACTATAGGGCGGCCGGAATTCGTCGACTGGATCCGGTACCGAGGAGATCTGCC  
GCC**CGCATCGCC**

ATGGACAAGGACGAATTCTCACGCAAGACCCTGACTGCACCAGCCCCATTTGCTGATGAATCCAGCTGCC  
AGTGCCAAGCACCTCATGAAAACTGACCGTTGCCAGGCCCGCTTAGGAACACCCAGTTGATAGGCCTGT  
TAGAGTGTATGCAGATGGAATATTTGACCTCTCCACTCAGGTCACGCAAGGGCACTTATGCAAGCAAAA  
ACACTGTTTCCCAACAGCTACTTGTGGTAGGAGTTTGCAGTGATGACCTTACTCAGAAATCAAAGGTT  
TTACTGTGATGAACGAGGCAGAGAGATATGAAGCTCTCAGACACTGTCGATACGTGGATGAAGTCATCAG  
AGACGCGCCATGGACTCTTACTCCAGAGTTTCTGGAAAAACACAAGATTGACTTTGTGGCTCAGCATGAT  
ATTCCATACTCCTCTGCTGGTTCTGATGACGTTTATAAGCATATCAAGGAAGCAGGCATGTTTGTCCAA  
CACAAAGAACAGAAGGCATCTCAACATCAGACATCATCACCAGAAATGTCCGTGACTATGATGTATATGC  
CCGGCGTAATCTCCAGAGAGGGTACACAGCCAAGGAGCTGAACGTGAGCTTTATAAACGAGAAGAAGTAC  
CGTTTCCAGAACCAGGTGGACAAGATGAAAGAAAAGGTCAAGAATGTGGAAGAAAGATCAAAGGAGTTTG  
TTAACAGAGTAGAAGAAAAGAGTCATGACCTAATTCAAAAGTGGGAAGAAAAATCAAGAGAGTTTATTGG  
CAACTTCTGAACTGTTTGGCCAGATGGTGCATGGAAGCAGATGTTCCAGGAGAGGAGTAGCCGGATG  
CTGCAGGCATTATCTCCGAAGCAGAGTCCTGTGAGCAGCCGACCCGGAGCCGGTCCCCTTCTCGCTCTC  
CATCTCCTACCTTCTCCTGGCTCCCAAACAAGACCTCTCCCCCTCTCACCACCAAGCAGCCTCAGCCTC  
CATCAGCAGCATGAGCGAGGGGGATGAGGATGAGAAG

**ACGCGT**ACGCGGCCGCTCGAGCAGAACTCATCTCAGAAGAGGATCTGGCAGCAAATGATATCCTGGATT  
ACAAGGATGACGACGATAAGGTTTAA



[View online »](#)

**Protein Sequence:** >MR216126 representing NM\_177546  
Red=Cloning site Green=Tags(s)

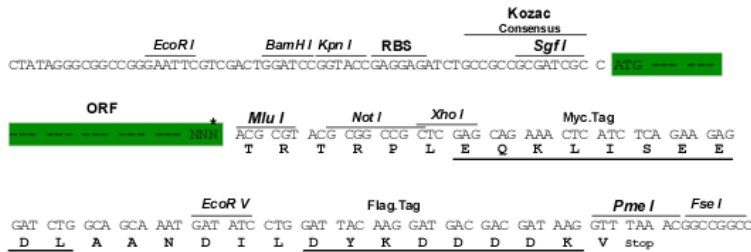
MDKDEFSRKTLTAPAPFADESSCQCQAPHEKLTVAQARLGTVPDRPVRVYADGIFDLFHSGHARALMQAQ  
 TLFPNSYLLVGCSDDLTHKFKGFTVMNEAERYEALRHCRYVDEVIDAPWTLTPEFLEKHKIDFVAHDD  
 IPYSSAGSDDVYKHIKEAGMFVPTQRTEGISTSDIITRIVRDYDYYARRNLQRGYTAKELNVSFINEKKY  
 RFQNQVDKMKKEKVNVEERSKEFVNRVEEKSHDLIQKWEEEKSREFIGNFLELFGPDGAWKQMFQERSRM  
 LQALSPKQSPVSSPTRSRSPSRSPPTFSWLPNKTSPPSSPKAASASISSMSEGDEDEK

TRTRPLEQKLISEEDLAANDILDYKDDDDKV

**Restriction Sites:** SgfI-MluI

**Cloning Scheme:**

Cloning sites used for ORF Shuttling:



\* The last codon before the Stop codon of the ORF

**ACCN:** NM\_177546

**ORF Size:** 1017 bp

**OTI Disclaimer:** The molecular sequence of this clone aligns with the gene accession number as a point of reference only. However, individual transcript sequences of the same gene can differ through naturally occurring variations (e.g. polymorphisms), each with its own valid existence. This clone is substantially in agreement with the reference, but a complete review of all prevailing variants is recommended prior to use. [More info](#)

**OTI Annotation:** This clone was engineered to express the complete ORF with an expression tag. Expression varies depending on the nature of the gene.

**Components:** The ORF clone is ion-exchange column purified and shipped in a 2D barcoded Matrix tube containing 10ug of transfection-ready, dried plasmid DNA (reconstitute with 100 ul of water).

**Reconstitution Method:**

1. Centrifuge at 5,000xg for 5min.
2. Carefully open the tube and add 100ul of sterile water to dissolve the DNA.
3. Close the tube and incubate for 10 minutes at room temperature.
4. Briefly vortex the tube and then do a quick spin (less than 5000xg) to concentrate the liquid at the bottom.
5. Store the suspended plasmid at -20°C. The DNA is stable for at least one year from date of shipping when stored at -20°C.

**RefSeq:** [NM\\_177546.2](#), [NP\\_808214.1](#)

**RefSeq Size:** 4864 bp

**RefSeq ORF:** 1020 bp

**Locus ID:** 236899

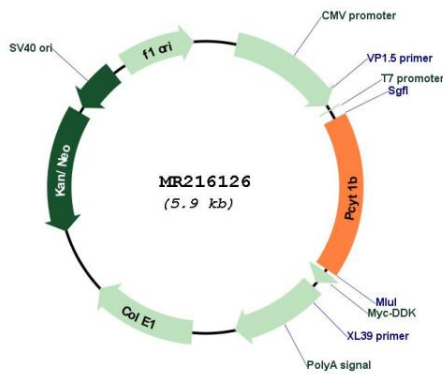
**UniProt ID:** [Q811Q9](#)

**Cytogenetics:** X C3

**MW:** 39.2 kDa

**Gene Summary:** Controls phosphatidylcholine synthesis.[UniProtKB/Swiss-Prot Function]

**Product images:**



Circular map for MR216126