

## Product datasheet for **MR216120**

### **Pde1c (NM\_001025568) Mouse Tagged ORF Clone**

#### **Product data:**

Product Type:	Expression Plasmids
Product Name:	Pde1c (NM_001025568) Mouse Tagged ORF Clone
Tag:	Myc-DDK
Symbol:	Pde1c
Mammalian Cell Selection:	Neomycin
Vector:	pCMV6-Entry (PS100001)
E. coli Selection:	Kanamycin (25 ug/mL)



[View online »](#)

ORF Nucleotide  
Sequence:

>MR216120 representing NM\_001025568  
Red=Cloning site Blue=ORF Green=Tags(s)

TTTTGTAATACGACTCACTATAGGGCGGCCGGAATTCGTGACTGGATCCGGTACCGAGGAGATCTGCC  
GCC**CGCATCGCC**

ATGGAGTCTCCAACCAAGGAAATTGAAGAATTCGAGAGCAACTCTCTGAAACACCTGCAACCTGAGCAGA  
TCGAGAAAATCTGGCTTCGGCTCCGCGGGCTGAGGAAATATAAGAAAACGTCCCAGAGGTTACGGTCTTT  
GGTCAAGCAATTAGAACGAGGAGAGGCCTCTGTGGTAGACCTTAAGAAGAATCTGGAATATGCAGCCACA  
GTGCTTGAATCTGTATATATTGATGAAACAAGGCGACTGCTGGATACAGAGGATGAGCTTAGTGACATTC  
AATCAGATGCTGTGCCTCAGAAGTTCGGGATTGGCTGGCTCCACCTTCACACGGCAGATGGGGATGAT  
GCTTAGGAGAAGTGATGAGAAGCCAGGTTCAAGAGCATCGTCCATGCGGTGCAAGCTGGGATATTTGTG  
GAAAGAATGTACAGACGGACATCAAACATGGTTGGGCTGAGCTATCCACCGGCTGTAATCGATGCATTGA  
AGGATGTGGATACGTGGTCTTCGATGTCTTTCCCTCAATGAGGCCAGTGGAGATCATGCACTGAAGTT  
CATTTTCTATGAATTACTCACACGTTATGACCTGATCAGCCGTTTTAAGATACCGATTTCTGCATTGTG  
TCATTTGTGGAGGCCCTCGAAGTGGGTTACAGCAAGCACAAAAATCCTTACCATAACCTGATGCATTGCAG  
CTGACGTCACACAGACTGTGCATTACCTCCTTTATAAGACAGGAGTAGCAAACCTGGCTGACAGAGCTGGA  
GATCTTTGCAATAATCTTTTCGGCTGCCATCCATGACTATGAACATACTGGAACACAAAACATTTCCAC  
ATTCAGACTCGGTGAGATCCAGCTATCCTGTACAATGACAGATCTGCTCCTGGAGAACCACCACCTGAGTG  
CAGCCTACCGCCTTCTGCAGGAAGACGAAGAGATGAATATTCTGGTTAACCTCTCAAAGGATGACTGGAG  
GGAGTTTTCGAACCTTGGTTATTGAGATGGTAATGGCCACAGATATGTCCTGTCAATTTCCAGCAAATCAA  
GCCATGAAGACAGCCCTGCAGCAACCAGAAGCAATTGAGAAGCCGAAAGCCTTATCCCTCATGTTACACA  
CAGCAGACATCAGTCATCCTGCGAAAGCATGGGACCTGCACCACCGCTGGACCATGTCTCTCCTGGAGGA  
GTTCTTTAGACAGGGTGACAGAGAAGCAGAGCTGGGGCTGCCATTTTCTCCTTTTGTGACAGAAAGTCA  
ACCATGGTTGCTCAGTCACAAGTGGGTTTTATTGACTTATTGTGGAGCCACCTTCACTGTGCTCACGG  
ACATGACCGAGAAGATTGTGAGTCCATTAATTGACGAAAGCTCCCAGACTGGTGGACAGGGCAGAGGAG  
ATCAAGTTTGAACAGCATCAACTCATCAGATGCAAAGCGATCCGGTGTCAAGAGTTCTGGGTCAGATGGA  
AGTGCTCCCATCAACAATTCTGCTATTCTGTTGACTATAAGAGTTTTAAAGCCACTGGACTGAGGTGG  
TGCAGATCAATCGGGAGCGGTGGCGAGCCAAGGTACCCAAAGAAGAAAAAGCCAAGAAGGAAAGCTGAAGA  
GAAGGCTCGCCTGGCTGCTGAGGAAAAGCAAAAGGAAATGGAAGCCAAAAGCCAAGCTGAACAAGGCACA  
ACCAGCAAAGGCGAGAAAAGACATCAGGAGAAGCCAAAAGTCAAGTCAATGGAACACGCAAGGGTGATA  
ACCCTCGTGGGAAGAACTCCAAAGGAGAAAAGGCAGGCGAAAAGCAGCAGAACGGTGACTTGAAAGACGG  
TAAAAATAAGGCAGACAAGAAGGATCACTCCAACACCGGAAATGAGTCAAAGAAAACAGATGATCCAGAG  
GAG

**ACGCGT**ACGCGGCCGCTCGAGCAGAAACTCATCTCAGAAGAGGATCTGGCAGCAAATGATATCCTGGATT  
ACAAGGATGACGACGATAAGGTTTAA

**Protein Sequence:** >MR216120 representing NM\_001025568  
Red=Cloning site Green=Tags(s)

```
MESPTKEIEEFESNSLKHLLQPEQIEKIWLRLRGLRKYKKTSQLRSLVKQLERGEASVVDLKKNLEYAAT
VLESVYIDETRRLLDTEDELSDIQSDAVPSEVRDWLASTFTRQMGMLRRSDEKPRFKSIVHAVQAGIFV
ERMYYRRTSNMVGLSYPPAVIDALKDVTWSFDVSLNEASGDHALKFIFYELLTRYDLISRFKIPISALV
SFVEALEVGYSKHKNPYHNLMAADVTQTVHYLLYKTVANWLTELEIFAIIFSAAIHDIYEHTGTTNNFH
IQTRSDPAILYNDRSVLENHHL SAA YRL LQE DEEMNIL VNL SKDDWREFRTLVIEMVMATDMSCHFQQIK
AMKTALQQPEAIEKPKALSLMLHTADISHPAKAWDLHHRWTMSLLEEFFRQGDREAELGLPFSPLCDRKS
TMVAQSQVGFIDFIVEPTFTVL TDMTEKIVSPL IDESSQTGGTGQRRSSLNSINSSDAKRSGVKSSGSDG
SAPINNSVIPVDYKSFKATWTEVVQINRERWRKVPKEEKAKKEAEEKARLAAEEKQKEMEAKSQAEEQGT
TSKGEKKTSGEAKSQVNGTRKGDNPRGKNSKGEKAGEKQNGDLKDGNKADKKDHSNTGNESKKTDDPE
E
```

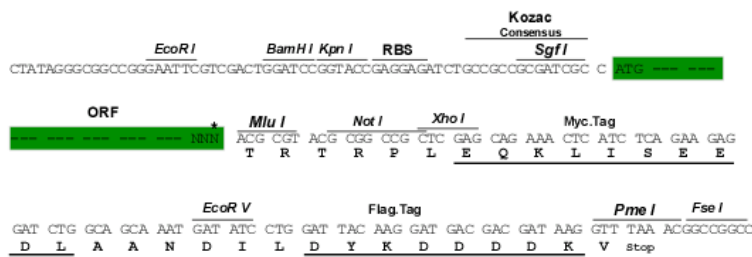
TRTRPLEQKLISEEDLAANDILDYKDDDDKV

**Chromatograms:** [https://cdn.origene.com/chromatograms/mm9038\\_a02.zip](https://cdn.origene.com/chromatograms/mm9038_a02.zip)

**Restriction Sites:** SgfI-MluI

**Cloning Scheme:**

Cloning sites used for ORF Shuttling:



\* The last codon before the Stop codon of the ORF

**ACCN:** NM\_001025568

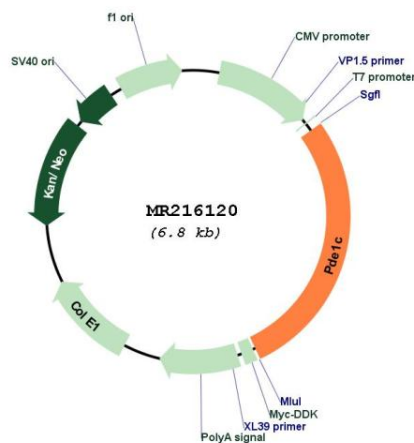
**ORF Size:** 1893 bp

**OTI Disclaimer:** The molecular sequence of this clone aligns with the gene accession number as a point of reference only. However, individual transcript sequences of the same gene can differ through naturally occurring variations (e.g. polymorphisms), each with its own valid existence. This clone is substantially in agreement with the reference, but a complete review of all prevailing variants is recommended prior to use. [More info](#)

**OTI Annotation:** This clone was engineered to express the complete ORF with an expression tag. Expression varies depending on the nature of the gene.

- Components:** The ORF clone is ion-exchange column purified and shipped in a 2D barcoded Matrix tube containing 10ug of transfection-ready, dried plasmid DNA (reconstitute with 100 ul of water).
- Reconstitution Method:**
1. Centrifuge at 5,000xg for 5min.
  2. Carefully open the tube and add 100ul of sterile water to dissolve the DNA.
  3. Close the tube and incubate for 10 minutes at room temperature.
  4. Briefly vortex the tube and then do a quick spin (less than 5000xg) to concentrate the liquid at the bottom.
  5. Store the suspended plasmid at -20°C. The DNA is stable for at least one year from date of shipping when stored at -20°C.
- RefSeq:** [NM\\_001025568.2](#), [NP\\_001020739.1](#)
- RefSeq Size:** 8864 bp
- RefSeq ORF:** 1896 bp
- Locus ID:** 18575
- UniProt ID:** [Q64338](#)
- Cytogenetics:** 6 27.65 cM
- MW:** 72.2 kDa
- Gene Summary:** Calmodulin-dependent cyclic nucleotide phosphodiesterase with a dual-specificity for cAMP and cGMP, which are key regulators of many important physiological processes (PubMed:8810348). Exhibits high affinity for both cAMP and cGMP (By similarity). Modulates the amplitude and duration of the cAMP signal in sensory cilia in response to odorant stimulation, hence contributing to the generation of action potentials. Regulates smooth muscle cell proliferation. Regulates the stability of growth factor receptors, including PDGFRB (Probable).[UniProtKB/Swiss-Prot Function]

**Product images:**



Circular map for MR216120