

Product datasheet for **MR216095**

Ganc (NM_172672) Mouse Tagged ORF Clone

Product data:

Product Type:	Expression Plasmids
Product Name:	Ganc (NM_172672) Mouse Tagged ORF Clone
Tag:	Myc-DDK
Symbol:	Ganc
Synonyms:	5830445O15Rik; 9330160A12; mFLJ00088
Mammalian Cell Selection:	Neomycin
Vector:	pCMV6-Entry (PS100001)
E. coli Selection:	Kanamycin (25 ug/mL)



[View online »](#)

ORF Nucleotide Sequence:

>MR216095 representing NM_172672
 Red=Cloning site Blue=ORF Green=Tags(s)

TTTTGTAATACGACTCACTATAGGGCGGCCGGAATTCGTCGACTGGATCCGGTACCGAGGAGATCTGCC
 GCC**CGCATCGCC**

ATGGAAGCAGCTGAGAAAGAGGAAATCAGTGTGAAGATGAAGCAGTGGATAAACTATTTTCAAAGACT
 GTGGCAAGATTGCATTCTACAGGCGGCAGAAACAGCAGCTCACCAAGACTACCACCTACCAGGCTTTGCT
 AGGCTCAGTCGACACAGAACAGGACAGCACCAGGTTCCAATCATCAGTGAAGCAACTAAGATTCCTCTC
 GTGGCTGAAGTTTATGGTATAGAGAAAGACATTTTCAGACTTAAGATCAATGAAGAGACTCCACTGAAAC
 CAAGGTATGAAGTTCCTGACGTCAACAGCAAGCTAGGAACTGTCAGGCTGGTCTGCTCAGGGGACAC
 AGGCAGCCTAATACTGACAAATAGAAAAGGAGATCTGAAATGTCACGTCTCAGCAAACCCATTCAAGATC
 GATTTGCTGTGGAAGACGAGGCTGTGATCAGCATCAACTCCCTGGGCCAGTTTACTTTGAGCACCTAC
 AGGTTCTCACAAGCAGAGACTACCAAAGGAAATGGGCAAAATACACCAGCTGCCACCTCTCAGGAAAA
 TCAAGAGGACCTGGGCCGTGGGAAGAAAAATTTGAAAAATTTGGATGTCAAAGCTAATGGCCCTTCC
 TCTGTTGGTTTGATTTCTCTTTCATGGATTTGAACATCTCTATGGTATTCCTCAACATGCAGAGTCAC
 ATCAACTTAAAAATACCAGAGATGGAGATGCATACCGTCTTTATAATCTGGACGTCTATGGATACCAAGT
 GCATGACAAAAATGGGCATATATGGTTTCAGTGCCTTATCTCTGGCCACAAAACAGGGCAGGACTGTAGGC
 ATTTTCTGGCTGAATGCTTCAGAAACACTCGTGGAGATCAACACAGAGCCAGCAGTTGAGTACACACTGA
 CCCAGATGGGCCAGCAGCTGCCAAACAAAAGGTGAGGTGCCAACTGATGTGCACTGGATGTGAGAGAG
 TGGGATCATTGACGTTTTCTGCTGACAGGACCTACACCTGCTGACGTCTTCAAACAGTACTCATATATC
 ACAGGCACACAAGCCATGCCCTCTTTTTCTTGGGTACCACCAGTGTGCTGGAATCATGAAGATG
 AACAGATGTGAAGCAGTAGATGCAGGTTTGTATGAGCATGACATTCCATATGATGTGATGGTGGG
 CATAGAGCACACGGAGGACAAGAAGTACTTACCTGGGACAAAAAGAGATTTGCAAACCCCAAAAGGATG
 CAAGAGCTGCTCAGGAGCAAAAAACGCAAGCTTGTGGTTATCAGTGACCCCCACATCAAGGTGGATCCTG
 ACTACACAGTCTATGCTCAAGCCAAAGAACAGGGCTTCTTTGTGAAGAATCCAGAGGGTGGCGACTTCGA
 AGGAGTATGTTGGCCTGGTCTCTCGTCTTACCTGGATTTACCAACCCCAAGGTGAGAGTGGTATTCC
 AGCCTTTTTGCTTTTCTGTTTATCAGGGATCTACGGACATCCTTTTCTATGGAATGACATGAATGAGC
 CCTCAGTCTTTCAGAGGGCTGAGCTAACCATGCACAAGAGTGTGTTTATTATGGCGACTGGGAACACAG
 AGAACTTCAACATCTACGGATTTTATCAGCAAATGGCTACTGCAGAAGGATTGATAACAACGATCTAAG
 GGAAGGAGAGGGCCTTTGTTCTTTCACGTTCTTCTTTGCCGGATCACAAAAGTATGGTGCAGTGTGGA
 CAGGAGACAACAAGCGGAATGGAGCTATCTGAAAATCTCCATCCCGATGTTACTCACTCTCAGTGTCTC
 GGGAACTCCTTCTGTGGAGCTGATGTGGTGGCTTCATTGGCAATCCTGAGGCAGAGCTGCTTGTGCGT
 TGGTACCAGGCTGGAGCTTACCAGCCCTTCTTCCGAGGCCATGCCACCATGAACCCAAGCGACGAGAAC
 CCTGGCTGTTGGGAAGAATACACTCAGCTGATCCGGGAAGCCATCAGGCAGCGCTACGCCCTCTGCC
 CTATCTGTATTCTCTGTTCTACACACGCACGTGCTTCTCAGCCCGTATGAGGCCTCTGTGGGTGCA
 TATCCTGATGACTTAGAGACTTTTGTGTGGAAGATGAATACATGCTGGGAAGCGCTTTATTGGTTCATC
 CAGTTACAGACCCACAGACCCACGATTGACGTGTTCTGCCAGGTCAGATGAGGTCTGGTACGACTC
 TAAGACATTTGCATATTTGAAAGGAGGGTGTACTGTGAAGATTCAGTAACTTGGATACTATCCAGTG
 TTTACAGCGAGGTGGAAGTGTGGTACCAGTAAAGACCACTGTGGAACTCCACTGGCTGGATGGCTGACT
 CCCCTTATGAGCTCCGGTTGCCCTAAGCACTCAGGGTCTGCTGTGGGAGAGCTGTATCTTGTGACGG
 CCATTCATTCCAGTACCTCCACCAGAACCAGTTCTTATACCGCAAGTTCTTATTCTGCTCCAGTGTCTG
 ACCAACAGGTGTGCAATGAGAAGGTCATTACCCAGCAAGTGCATTGTGGAGCAGATCTTGGTCTTAG
 GCCTTAAGAAGAAGCCATCTTCTGTGACTACCCACTTGTCTGATGGTAGAGCTCAGCCTGCAGCTTTTAC
 ATATTGTGCCGAAACATCTGCCCTGCGTCTGGAGAAGCTGTCTCTGCGCATTGGTGGAGACTGGGAAGTC
 CGTGTGGGC

ACGCGTACGCGGCCGCTCGAGCAGAACTCATCTCAGAAGAGGATCTGGCAGCAAATGATATCCTGGATT
 ACAAGGATGACGACGAT AAGGTTTAA

Protein Sequence: >MR216095 representing NM_172672
 Red=Cloning site Green=Tags(s)

MEAAEKEEISVEDEAVDKTIFKDCGKIAFYRRQKQQLTKTTTTYQALLGSVDTEQDSTRFQIISEATKIPL
 VAEVYIGIEKIDIFRLKINEETPLKPRYEPDVINSLGTVRLVCSGDTGSLILNTRKGDLCCHVSANPFKI
 DLLSKNEAVISINSLGQLYFEHLQVPHKQKQATKNGQNTPAATSQENQEDLGLWEEKFKGKVDVKANGPS
 SVGLDFSLHGFEHLYGIPQHAESHQLKNTRDGDYRLYNLDVYGYQVHDKMGIYGSVPYLLAHKQGRVTG
 IFWLNASETLVEINTEPAVEYTLTQMGPAAAKQKVRCRTDVHWMSESGIIDVFLLTGPTPADVFKQYSYI
 TGTQAMPPLFSLGYHQCRWNYEDEQDVKAVDAGFDEHDIPYDVMWLDIEHTEDKKYFTWDDKRFANPKRM
 QELLRSKRKRLVVISDPHIKVDPDYTVYAQAQKQGFVKNPEGGDFEGVCWPLSSYLDFNPKVREWYS
 SLFAFPVYQGSTDILFLWDMNEPSVFRGPELTMHKSAVHYGDWEHRELHNIYGFYQQMATAEGLIQRSK
 GKERPFLVSRFFAGSQKYGAVWTGDNKAESYLKISIPMLLTLVSGISFCGADVGGFIGNPEAELLVR
 WYQAGAYQPFRRGHATMNTKRREPWLFGEETQLIREAIRQRYALLPYLYSLFYHTHVSSQPMRPLWVE
 YPDDLETFAVEDEYMLGSALLVHPVTDPTATIDVFLPGSDEVWYDSKTFAYWKGCTVKIPVTLDTIPV
 FQRGGSVVPVKTTVGTSTGWMADSPYELRVALSTQGSVAVGELYLDDGHSFYQLHQNFYLRKFLFCSSVL
 TNRCANEKGHYPSKCIVEQILVLGLKKKPSVTHLSDGRAQPAAFYCAETSALRLEKLSLRIGEDWEV
 RVG

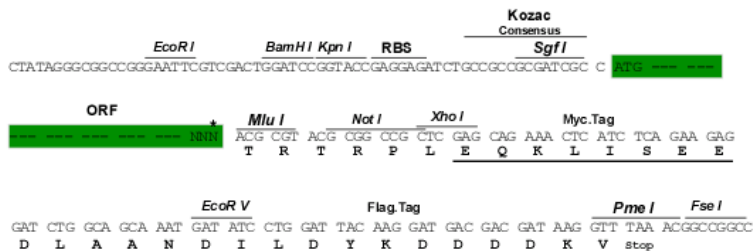
TRTRPLEQKLISEEDLAANDILDYKDDDDKV

Chromatograms: https://cdn.origene.com/chromatograms/mm9096_f12.zip

Restriction Sites: SgfI-MluI

Cloning Scheme:

Cloning sites used for ORF Shuttling:

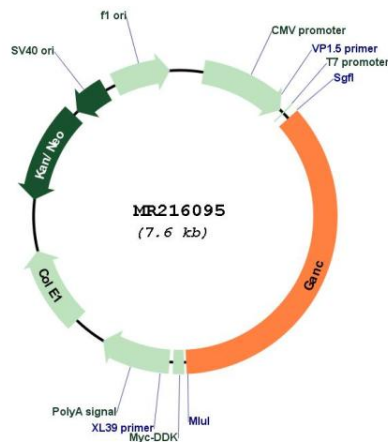


* The last codon before the Stop codon of the ORF

ACCN: NM_172672

ORF Size: 2739 bp

OTI Disclaimer:	The molecular sequence of this clone aligns with the gene accession number as a point of reference only. However, individual transcript sequences of the same gene can differ through naturally occurring variations (e.g. polymorphisms), each with its own valid existence. This clone is substantially in agreement with the reference, but a complete review of all prevailing variants is recommended prior to use. More info
OTI Annotation:	This clone was engineered to express the complete ORF with an expression tag. Expression varies depending on the nature of the gene.
Components:	The ORF clone is ion-exchange column purified and shipped in a 2D barcoded Matrix tube containing 10ug of transfection-ready, dried plasmid DNA (reconstitute with 100 ul of water).
Reconstitution Method:	<ol style="list-style-type: none"> 1. Centrifuge at 5,000xg for 5min. 2. Carefully open the tube and add 100ul of sterile water to dissolve the DNA. 3. Close the tube and incubate for 10 minutes at room temperature. 4. Briefly vortex the tube and then do a quick spin (less than 5000xg) to concentrate the liquid at the bottom. 5. Store the suspended plasmid at -20°C. The DNA is stable for at least one year from date of shipping when stored at -20°C.
RefSeq:	NM_172672.2 , NP_766260.2
RefSeq Size:	4818 bp
RefSeq ORF:	2742 bp
Locus ID:	76051
UniProt ID:	Q8BVW0
Cytogenetics:	2 E5
MW:	103.7 kDa
Gene Summary:	Has alpha-glucosidase activity.[UniProtKB/Swiss-Prot Function]

Product images:


Circular map for MR216095