

Product datasheet for MR216090

Ptpn21 (NM_001146199) Mouse Tagged ORF Clone

Product data:

Product Type: Expression Plasmids
Product Name: Ptpn21 (NM_001146199) Mouse Tagged ORF Clone
Tag: Myc-DDK
Symbol: Ptpn21
Synonyms: PTPD1; PTPRL10
Mammalian Cell Selection: Neomycin
Vector: pCMV6-Entry (PS100001)
E. coli Selection: Kanamycin (25 ug/mL)
ORF Nucleotide Sequence: >MR216090 ORF sequence
 Red=Cloning site Blue=ORF Green=Tags(s)

TTTTGTAATACGACTCACTATAGGGCGCCGGGAATTCGTCGACTGGATCCGGTACCGAGGAGATCTGCC
 GCCCGCATCGCC

ATGCCACTGCCATTTGGATTGAAGTTGAAACGCACCCGACGCTACACTGTGTCCAGCAAGAGCTGCCTGG
 TTGCCCGGATCCAGCTGCTCAATAATGAGTTTGTGGAGTTCACCTGTCTGTGGAGAGCACTGGCCAGGA
 GAGCCTAGAAGCTGTGGCCAGCGCCTGGAGCTGAGAGAGGTCACCTACTTTAGCCTCTGGTACTACAAC
 AAGCAGAATCAGCGCGCTGGGTGGATTTGGAGAAACCCCTGAAGAAGCAGCTGGACAAGCACGCACTGG
 AGCCTACCGTCTACTTCGGCGTCTATTCTATGTGCCTCTGTTCAGCTGCAGCAGGAGATTACCAG
 GTATCAGTATTACCTGCAGCTGAAGAAAGATATTCTGGAAGGAAACCTTCCCTGTACATTAGAACACGCC
 ATTCAGCTGGCCGGCTTAGCTGTTCAAGCTGATTTTGGTGACTTTGATCAGTATGAATCCCAAGATTTTC
 TTCAGAAATTTGCCTTGCTCCCCGTGGCATGGCTACAGGATGAAAAAGTCTGGAAGAAGCAGCCAGAA
 AGTGGCCTTACTGCACCAGAAATACAGAGGGCTCACAGCTCCTGAGGCCGAGCTGCTGTACATGCAGGAG
 GTAGAGAGAATGGATGGCTACGGAGAGGAGAGCTACCCTGCCAAGGACAGCCAAGGAAGTGACATATCCA
 TTGGTGCCTGTCTCGATGGCATCTTTGTGAAACACAAGAACCGAAGGCCCTCCTGTGGTGTTCAGGTGGCA
 CGACATTGCTAACATGTCGCATAACAAGTCCTTTTTGCACTAGAGCTGGCAAATAAAGAGGAGACCATC
 CAGTTTCAAACCTGAAGACATGGAGACAGCCAAGTACGTGTGGCGCTGTGTGGCACGGCACAAATTC
 ACAGACTGAACCAGTGTAGCCTGCAAACGCAGGCCGCCAGCTGAACTCAGTCAGGAGGGGCTCATCCTC
 CAGGATGTCTCTGCCTAAACCCAGCCCTATGCGATGCCTCCCCACCCAGCTGCATTATAATGGACAT
 TATACAGAGCCATTTGCTTCTTCCCAAGACAACATCTTTGTGCCAACAGAATGGATTCTACTGCACT
 CCCAGACAAGCCTGGATAGAACCAGATTGACCTCAGTGGTCGCATCCGCAACGGCAGCGCTACAGTGC
 ACACAGTACGAATTCCTTAAACACACTTCAGCCCTACCTGCAGCCCTCCCCATGCTCTCAACCCGAGT
 ATCACTGGCAGTGATGTCATGAGACCCGACTACATCCCGTCCCACGGCACAGTGCCTCATTCCCCGT
 CTTACCGCCCGACCCCTGACTACGAGACCGTGATGAAGCAGCTCAACAGAGGCATGGTGCACGCAGACCG
 GCACAGCCACTCGCTGAGGAACCTCAACATTGGCAGTTCCTATGCGTACAGCCGGCCGACGCTTGGTC



[View online »](#)

TACAGCCAGCCCAGATTCTGGGAGCACCTCACCTCACCTCTCCCCAGTCAGCCCACTACCCCTTTAACC
TGAAGTACAGTTTCCACAGCCAGTCTCCGTATCCCTACCTGCCGAGAGGCGGCCAGTGGTGGGCGCCGT
GAGTGTGCCTGAACTGACAAAATGTGCAGCTGCAGGCTCAGGACTACCCAGCTCCAAAACATTATGAGAACC
CAGGTGTACCGCCACCCCGCCGTATCCTTACCCAAGACCTGCCAACAGCACCCAGACCTGTCCCGCC
ACCTCTACATCAGCAGCAGCAATCCGGATCTCATCACCAGGCGCGTCCATCACTCAGTGCAGACCTTCCA
GGAGGACAGCTTGCCCGTGGCTCACTCTCTGCAGGAGGTCAGCGAGCCCTCACAGCAGCGGCCATGCC
CACCTACAGAAGAGGAACAGTATTGAAATCGCAGGGCTCACACATGGATTTCGAAGGCCTGAGGCTCAAGG
AGAGGACGGTGTAGCCTCAGCAGCAGACGTGGCGCCCGGACCTTCTCAGCAGGCTCCCAGTCCAGCGT
CTTCTCTGACAAAATGAAGCAGGAGGGGACTGAAGAGCAGGAGGGTGGCAGATACAGCCATAAGAAGTCC
CTTTCTGATGCCACCATGCTGATTCATAGCAGTGAAGGAGCAGGACTTGAAGAGGACAGCAGCAGAG
AACAGGCCATCTCAGCTGTGTCTGAGCCCCGCTTACGGCCGCTTTCTCTCAGGAACTAACTACCCCTG
TGCTTCAGCGACTCCGATCACTGGGCTCTGCATATTTTTGAGCCCAAGCCCATGTACAGAGCCTGAG
AAGAGGGCAAAGGACATCAGCCCTGCCACCTGGTTGTGGAGACCCATCGGCCCGAAGAGATGGACTGC
TGACCCCTCCATGTCCGAGTCAAGCTCACGACCTCAGGAGGTACCGAGCTAGGAGGGACTCTGTCAA
GAAAAGGCCAGTGTAGACCTCCTCTCTGGGAAAAAAGCGCTGTGGAAGGACTTCCGCCACTAGGGGGG
ATGAAAAAACTCGAGCAGATGCAAAAAAATGGTCCCCTCAAGCTGGCAGCCCTCAATGGGCTCTCC
TGTCGGGCTGCCCTGCCTGATGAAGGAAAAGAGTGTCCACCAGAGCGACAAAATGACGAGAGGTGCAA
GGTTCTGGAGCAGCGTTAGAGCAAGGCATGGTCTTACCGAATATGAGAGGATCCTTAAGAAGCGGCTG
GTTGATGGTGAGTGTCTGACTGCCCGGCTCCCTGAAAAATGCAGAGAGAAAATCGATTTCAAGATGTCTCC
CCTACGATGATGCGAGAGTCAAGTGGTGCCAACCAAGGAGAAACAACACTGGCTACATCAACCGTCAACA
CATTAAAGTCTCTGTAGCGGAATAGAATGGGATTATATTGCCACACAGGGACCATTACAAAATACCTGC
CAGGACTTTTGGCAGATGGTGTGGGAACAGGGAGTCAATTATAGCAATGGTGACAGCAGAAGAGGAGG
GAGGCCGGGAGAAGAGCTTTAGTACTGGCCACGGCTTGGTTCCAGGCACAACACTGTACCTATGGAAG
GTTTAAGATCACAAACGCGCTTCCGCACGACTCGGGCTGCTATGCCACCACAGGTTTGAAGATGAAGCAC
CTTCTCACAGGGCAGGAGAGAACCCTTTGGCATCTTCACTACACAGACTGGCCTGAACACGGCTGTCCCG
AAGACCTCAAAGGATTTTTATCTACCTTGAAGAGATCCAGTCACTTCGACGTCATACAAAACAGTACCAG
TGAACCCAAAAGCCACAATCCCCGCTGCTGGTGCAGTGCAGTGTGGCGTGGGAAGAACTGGGGTCTGTC
ATTCTGTGAGAGATCATGGTTGCTGTCTGGAACACAATGAGGTGCTGGACATCCCAGAGTGTGGACA
TGCTGAGGCAGCAGAGGATGATGCTGGTGCAGACACTGGCCAGTACACCTTTGTGTACAGAGTGTCTCAT
TCAGTTCTGAAAAGCTCCAGGCTCATT

AGCGGACCGACGCGTACGCGCCGCTCGAGCAGAACTCATCTCAGAAGAGGATCTGGCAGCAAATGATATCC
TGGATTACAAGGATGACGACGATAAGGTTTAA

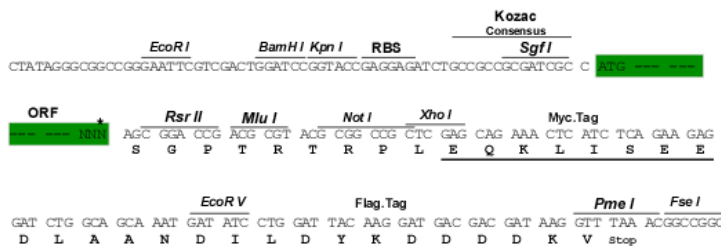
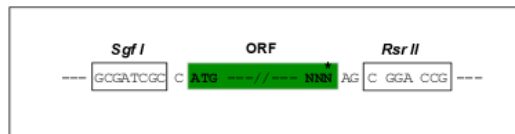
Protein Sequence: >MR216090 protein sequence
 Red=Cloning site Green=Tags(s)

MPLPFGLKLRTRRYTVSSKSLVARIQLLNNEFVEFTLSVESTGQESLEAVAQRLELREVTYFSLWYYN
 KQNQRWVDLEKPLKKQLDKHALEPTVYFVGLFVYPSVSQLQQEITRYQYYLQLKKDILEGNLPCTLEHA
 IQLAGLAVQADFGDFDQYESQDFLQKFALLPVAWLQDEKVL EEAQKVAL LHQKYRGLTAPEAELLYMQE
 VERMDGYGEESYPAKDSQGS DISI GACLDGIFVKHKNGRPPVFRWHDIANMSHNKSFFALELANKEETI
 QFQTEDMETAKYVWRLCVARHKFYRLNQC SLQTQAATLNSVRRGSSSRMSLPKQPYPAMPPPQLHYNGH
 YTEPFASSQDNIFVPNKNFYCHSQTSLDRTQIDL SGRIRNGSVYSAHSTNSLNTLQPYLQPSMSSNPS
 ITGSDVMRPDIIPSHRSALIPPSYRPTPDYETVMKQLNRGMVHADRHSHSLRNLNIGSSYAYSRPDALV
 YSQPEIREHPHLTSPQSAHYPFNLNYSFHSQSPYPYPAERRPVVAVSPEL TNVQLQAQDYPAPNIMRT
 QVYRPPPPYPYRPNANSTPDL SRHL YISSNPDLITRRVHHSVQTFQEDSLPVAHSLQEVSEPLTAARHA
 HLQKRNSIEIAGLTHGFEGRLKERTVSASAADVAPRTFSAGSQSSVFSKMKQEGTEEQGGRYSHKKS
 LSDATMLIHSSEDEDLEEDSSREQAISAVSEPRLTAAF S QELNYPCASATPITGPLHIFEPKPHVTEPE
 KRAKDISPAHLVVETHRPRRDGLLTPSMSESDLTTSGRYRARRDSVKKRPVSDLLSGKKS AVEGLPPLGG
 MKKTRADAKKIGPLKLAALNGLSLRSLPLPDEGKEVSTRATNDERCKVLEQRLEQGMVFTEYERILKKRL
 VDGECSSTARLPENAERNRFQDVL PYDDARVELVPTKENNTGYINASHIKVSVSGIEWDYIATQGPLQNTC
 QDFWQMVWEQVAIIAMVTAEEEGGREKSFYWPRLGSRHNTVYGRFKITTRFRDTS GCYATTGLMKMH
 LLTGQERTVWHLQYTDWPEHGCPEDLKGF LSYLEEIQSVRRHTNSTSEPKSHNPPLL VHCSAGVGR TG V
 ILSEIMVACLEHNEVL DIPRVL DMLRQQRMLVQTLGQYTFVYRVLIQFLKSSRLI

SGPTRRTRPLEQKLI SEEDLAANDILDYKDDDDKV

Restriction Sites: SgfI-RsrII
 Cloning Scheme:

Cloning sites used for ORF Shuttling:

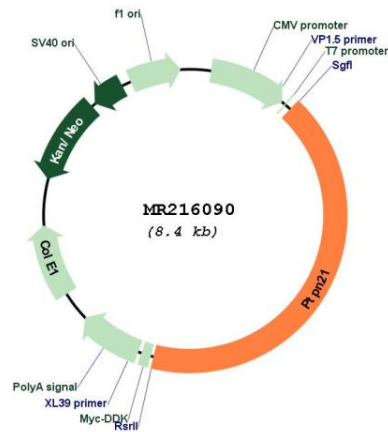


* The last codon before the Stop codon of the ORF

ACCN: NM_001146199
 ORF Size: 3531 bp

OTI Disclaimer:	The molecular sequence of this clone aligns with the gene accession number as a point of reference only. However, individual transcript sequences of the same gene can differ through naturally occurring variations (e.g. polymorphisms), each with its own valid existence. This clone is substantially in agreement with the reference, but a complete review of all prevailing variants is recommended prior to use. More info
OTI Annotation:	This clone was engineered to express the complete ORF with an expression tag. Expression varies depending on the nature of the gene.
Components:	The ORF clone is ion-exchange column purified and shipped in a 2D barcoded Matrix tube containing 10ug of transfection-ready, dried plasmid DNA (reconstitute with 100 ul of water).
Reconstitution Method:	<ol style="list-style-type: none"> 1. Centrifuge at 5,000xg for 5min. 2. Carefully open the tube and add 100ul of sterile water to dissolve the DNA. 3. Close the tube and incubate for 10 minutes at room temperature. 4. Briefly vortex the tube and then do a quick spin (less than 5000xg) to concentrate the liquid at the bottom. 5. Store the suspended plasmid at -20°C. The DNA is stable for at least one year from date of shipping when stored at -20°C.
RefSeq:	<u>NM_001146199.1, NP_001139671.1</u>
RefSeq Size:	5562 bp
RefSeq ORF:	3531 bp
Locus ID:	24000
Cytogenetics:	12 E
MW:	133.5 kDa

Product images:



Circular map for MR216090