

Product datasheet for **MR216047**

Arhgap10 (NM_030113) Mouse Tagged ORF Clone

Product data:

Product Type:	Expression Plasmids
Product Name:	Arhgap10 (NM_030113) Mouse Tagged ORF Clone
Tag:	Myc-DDK
Symbol:	Arhgap10
Synonyms:	A930033B01Rik; PSGAP-m; PSGAP-s
Mammalian Cell Selection:	Neomycin
Vector:	pCMV6-Entry (PS100001)
E. coli Selection:	Kanamycin (25 ug/mL)



[View online »](#)

**ORF Nucleotide
Sequence:**

>MR216047 representing NM_030113
 Red=Cloning site Blue=ORF Green=Tags(s)

TTTTGTAATACGACTCACTATAGGGCGGCCGGGAATTCGTCGACTGGATCCGGTACCGAGGAGATCTGCC
 GCC**CGCATCGCC**

ATGGGGCTGCAGCCCTGGAGTTTAGCGACTGCTACCTCGACAGCCCGTGGTTCCGGGAGAGGATCCGGC
 CGCACGAAGCGGAGCTCGAGAGGACCAACAAGTTCATCAAAGAGCTCATCAAAGACGGCAAGAACCCTCAT
 CTCTGCCACAAAAGTCTGTCTCAGCTGCCAGAGGAAGTTCGCTCACTCGCTCAGAGACTTCAAGTTCGAG
 TTTATCGGCGATGCTGAGACTGACGATGAACGGTGCATAGATGCCTCCTTACGGGAATTTCTAACTTTTC
 TGAAGAATCTGGAAGAACAGAGAGAAATCATGGCATTAAAGTGTGACTGAAACCCTGATTAACCCTTGGGA
 GAAATTCAGAAAAGAGCAGCTTGGAGCTGTAAAGGAAGAAAAAAGAAGTTTGACAAAGAGACGGAAAAAG
 AATTACAGTCTCATCGACAAGCACTTGACGCTGTCTGCCAGGAAGAAGGACTCACACTTGCAGGAGGCCG
 ACCTCAAAGTGGAGCAGAACCAGCAGCATTCTACGAGCTCTCGTTGAATATGTGTGCAAGCTCCAGGA
 AATCCAAGAAAGAAGAAGTTTCGAGTTTGTGGAGCCTATGCTGTCCTTCTTTTCAGGGAATGTTCACTTTC
 TATCATCAAGGCCACGAGCTTTCCAAAGACTTCAATCACTACAAGATGGAACACAAATCAACATTCAGA
 ATACACGGAATCGATTTGAGGGAACAGATCAGAAGTGGAGGAACCTTATGAATAAAATTAGACAAAATCC
 CAAGGACCAGAAGCGAGCCAGCCAGTTCACAGCAGAAGGCTACCTGTACGTCCAGGAGAAAAGGCCCTGCT
 CCATTTGGGTCCAGTTGGGTCAAACACTACTGCATGTACCGGAAAACAGCCAAGAAATTCACATGATTC
 CATTGAGCACAGATCTGGGGGAAACTGGGGGATGGCGAGGCTTTCTTTTTGAAAGAATGCACCAAAAAG
 GCACATGGACTCCACGGACAGAAGGTTTTGCTTTGACATCGAAGCTGTGACAGGCTGGCGTCCCTTG
 ACCGTGCAGGCGTTTTTCAGAAGAAGAGAGGAAGCAGTGGTTGGAAGCTCTGGGTGAAAAGAAGCTCTGT
 TCCACAGTTTTAACAGAGCCATTGTCCCGAGACCAGGAGGTGCACAGCTGGATAAGATGGGATTAC
 AATTCTCAGAAAATGCATCAGCGCGTTGAAACCCGAGGTATAAATGACCAAGGACTGTACAGAGTTGTG
 GGGGTGAGTTCAAAGGTCCAGAGACTTCTGAGTATGTTGATGGATGTAATAATGTGCAATGAGCTGGACC
 TGGAGAATTCTGCAGATTGGGAAGTGAAGACAGTAACAAGTGCCTTGAAGCAGTATCTGAGGAGTCTTCC
 AGAGCCTCTCATGACCTATGAGTTACACAGAGACTTCATTGTTCCAGCCAAGAGCGGCAGCCCGAATCC
 CGAGTTAATGCCATCCACTTCTTGGTACACAACTGCCAGAGAAGAATAAGGAGATGTTGGATATCTTGG
 TGAAGCATCTAACCAACGTGTCAAGTCACTCGAAGCAGAATCTAATGACAGTGGCGAATTTAGGGGTGGT
 GTTTGGACCAACTCTGATGAGACCACAGGAAGAGACTGTTGCCGCATCATGGATTTGAAGTTTCAGAAT
 ATCGTTGTAGAAATCTTAATTGAAAACCATGAAAAGATTTTTCGAACCTCGCCTGATACCACATTTGCTG
 AGCCCACATGCCTGTGAGCATCACCCCAACCGCTCCACCACGACAGTCCAAGAGACAAGGGCAGAGGAC
 GAAGAGACCAGTGGCCGTGTACAACCTTTGTCTTGAGCTGGAGGAGGGTGACAGTCCCAGCCCTCTCAAG
 GAGGACCCCCCAGCAGCAGTCAAGGACTCTCTCCACCCCATCTCCACAACGTGAGTGGCCATGGGC
 CTCCTGGACTAGACGAAACCACCTAGCAGCAGACGGAGGGAGCTGTGGAGATGCCACCGCCACCACGCC
 AAGCCAGACCCGGCCATCCATGGTGCAGTGGCTAAATATGCAGTCTCAACCACACCAAGCTCAACCCA
 GCTGGAACACCTCCTTACCCAGAATGTCACCGTTCCTCTCTCTCTGCTGCCTCCATTGTAGACAAGC
 TGCTGAGTGCCTTATCAATCGAAAGGCTCGGGCAGTGTACCCGTGTGAAGCAGAACACAGCTCGGAATT
 GTCATTTGAAATAGGAGCCATTTTTGAGGATGTTTCAGACCTCAAGGGAACCCGGATGGCTGGAAGGGACC
 CTGAACGGCAAGCGAGGGCTGATTCCACAGAATTATGTCAAGCTCCTG

ACGCGTACGCGGCCGCTCGAGCAGAAACTCATCTCAGAAGAGGATCTGGCAGCAATGATATCCTGGATT
 ACAAGGATGACGACGATAAGGTTTAA

Protein Sequence: >MR216047 representing NM_030113
 Red=Cloning site Green=Tags(s)

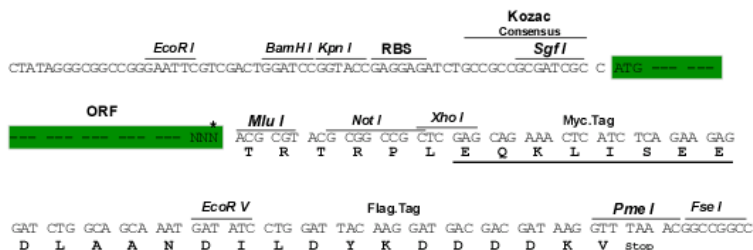
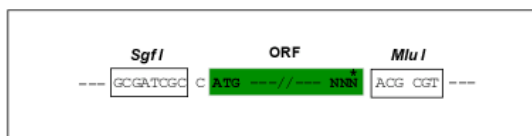
MGLQPLEFSDCYLDSPWFRERIRAHEAELERTNKFIKELIKDGKNLISATKSLSAAQRKFAHSLRDFKFE
 FIGDAETDDERCIDASLREFSNFLKNLEEQREIMALSVTETLIKPLEKFRKEQLGAVKEEKKKFDKETEK
 NYSLIDKHLTLSARKKDSHLQEADLQVEQNRQHFYELSLEYVCKLQEIQRKKKFEFVEPMLSFFQGMFTF
 YHQGHLSKDFNHYKMELQINIQNTRNRFEGTRSEVEELMNKIRQNPKDQKRASQFTAEGYLYVQEKRPA
 PFGSSWVKHYCMYRKAKKFNMIPEHRSGGKLDGGEAFFLKECTKRHMDSTDRRFCFDIEAADRPGVPL
 TVQAFSEEERKQWLEALGGKEALFHTFNRAIVPRPEGGAQLDKMGFTILRKCISAVETRGINDDGLYRVV
 GVSSKVQRLLSMLMDVKMCNELDLENSADWEVKTVTSALKQYLRSLEPLMTYELHRDFIVPAKSGSPES
 RVNAIHFLVHKLPEKNKEMLDILVKHLTNVSSHQNLMTVANLGVVFGPTLMRPQEETVAAIMDLKFQN
 IVVEIL IENHEKIFRTSPDTTFAEPTCL SASPPNAPPRQSKRQGQRTKRPVAVYNLCLEEEGDSPLK
 EDPPSSSQDSLSTPSPTTSAAHGPPGLDGNHLAADGGSCGDATATPSQTRPSMVQWLNMQSPTTSSNP
 AGTPPSPRMSPFPLSPAASIVDKLPECVINRKARAVYPCAEHSSSELSFEIGAI FEDVQTSREPGWLEGT
 LNGKRGLIPQNYVKLL

TRTRPLEQKLI SEEDLAANDILDYKDDDDKV

Restriction Sites: Sgfl-MluI

Cloning Scheme:

Cloning sites used for ORF Shuttling:



* The last codon before the Stop codon of the ORF

ACCN: NM_030113

ORF Size: 2358 bp

OTI Disclaimer: The molecular sequence of this clone aligns with the gene accession number as a point of reference only. However, individual transcript sequences of the same gene can differ through naturally occurring variations (e.g. polymorphisms), each with its own valid existence. This clone is substantially in agreement with the reference, but a complete review of all prevailing variants is recommended prior to use. [More info](#)
OTI Annotation: This clone was engineered to express the complete ORF with an expression tag. Expression varies depending on the nature of the gene.

Components: The ORF clone is ion-exchange column purified and shipped in a 2D barcoded Matrix tube containing 10ug of transfection-ready, dried plasmid DNA (reconstitute with 100 ul of water).

Reconstitution Method:

1. Centrifuge at 5,000xg for 5min.
2. Carefully open the tube and add 100ul of sterile water to dissolve the DNA.
3. Close the tube and incubate for 10 minutes at room temperature.
4. Briefly vortex the tube and then do a quick spin (less than 5000xg) to concentrate the liquid at the bottom.
5. Store the suspended plasmid at -20°C. The DNA is stable for at least one year from date of shipping when stored at -20°C.

RefSeq: [NM_030113.2](#), [NP_084389.2](#)

RefSeq Size: 3038 bp

RefSeq ORF: 2361 bp

Locus ID: 78514

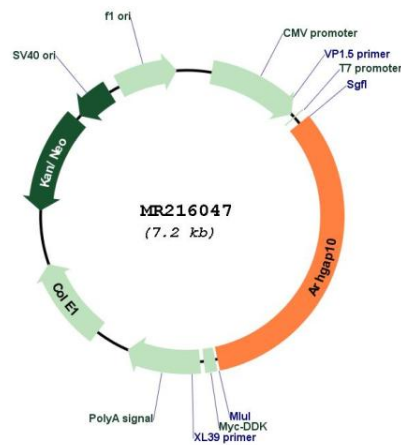
UniProt ID: [Q6Y5D8](#)

Cytogenetics: 8 C1

MW: 89.8 kDa

Gene Summary: GTPase activator for the small GTPases RhoA and Cdc42 by converting them to an inactive GDP-bound state. Essential for PTKB2 regulation of cytoskeletal organization via Rho family GTPases. Inhibits PAK2 proteolytic fragment PAK-2p34 kinase activity and changes its localization from the nucleus to the perinuclear region. Stabilizes PAK-2p34 thereby increasing stimulation of cell death.[UniProtKB/Swiss-Prot Function]

Product images:



Circular map for MR216047