

Product datasheet for **MR216000**

Pigv (NM_001145955) Mouse Tagged ORF Clone

Product data:

Product Type: Expression Plasmids
Product Name: Pigv (NM_001145955) Mouse Tagged ORF Clone
Tag: Myc-DDK
Symbol: Pigv
Synonyms: B330013B03; D430024F16Rik
Vector: pCMV6-Entry (PS100001)
E. coli Selection: Kanamycin (25 ug/mL)
Cell Selection: Neomycin
ORF Nucleotide Sequence: >MR216000 representing NM_001145955
Red=Cloning site Blue=ORF Green=Tags(s)

TTTTGTAATACGACTCACTATAGGGCGGCCGGAATTCGTCGACTGGATCCGGTACCGAGGAGATCTGCC
GCC**CGATCGCC**

ATGGGACTCCTGGACCCATCCAGAAAGAGGTGCTGAGATTCGCAGTAACTGCCGCATCCTGACTCTAG
TGCTACAGGATGTCTACTGGAATGTTGGTCTTCTGCGATACTATGAGCTCAAACAGGTGCCCAATTTCT
ACTAGCTACACCAGTGACAGTACTGGTTGTGTGGCAACCTGGACATATGTGACCACCCACCTTGGCTC
TGCCTTACACTTGGGCTGCAAAGAACCAAGGACAGGGAGAACCCGGAGAAGCCCCACCGTGGCTTCTCTGA
GTCCGAAGGTGTTTGTGTACCTGGTCCACGCTGCAGCACTGCTGGTCTTTGGAGGTCTGTGCATGCATGT
CCAGGTTCTCACGCGTTTTTGGCCTCTTCCACTCCTATCATGTACTGGTTTCCAGCTCACCTGCTTCAG
GATCAAGAACCGCTGCTGAGGTGTGTGGACACAGAGCCTGGGAAGCTTCTCAGGAGAAGTCCCCACCAG
GACAGAAGGCCCCAGAAACTGTCTCATGAAACTTTCTACGATTGGAAGAGATGCTCTCCAGTCACAAG
ATGCGTTCTGGTCTACTTCTGACCTACTGGCTTCTGGGACTAATTCTCCATTGCAACTTCTGCCTTGG
ACT

ACGCGTACGCGGCCGCTCGAGCAGAAACTCATCTCAGAAGAGGATCTGGCAGCAAATGATATCCTGGATT
ACAAGGATGACGACGATAAGGTTTAA



[View online »](#)

Protein Sequence: >MR216000 representing NM_001145955
 Red=Cloning site Green=Tags(s)

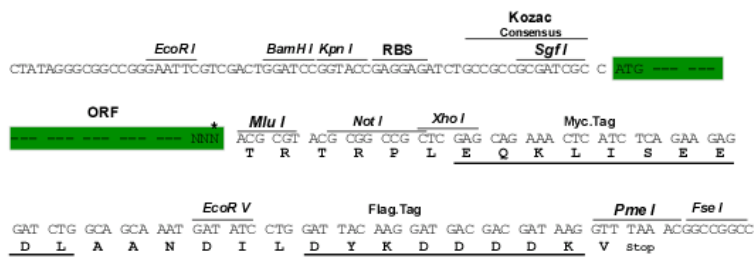
MGLLDPSQKEVLRFAVNCRILTLVLQDVYVNVGLLRYYELKQVPNFLLATPVTVLVWATWTVYVTTHPWL
 CLTLGLQRTKDRENPEKPHRGFLSPKVFVYLVHAAALLVFGGLCMHVQVLRFLASSTPIMYWFPALLQ
 DQEPDLLRCVDTEPGKLPQEKSPPGQKAPRNCLMKLFYDWKRCSPVTRCVLYVFLTYWLLGLILHCNPLPW
 T

TRTRPLEQKLISEEDLAANDILDYKDDDDKV

Restriction Sites: Sgfl-MluI

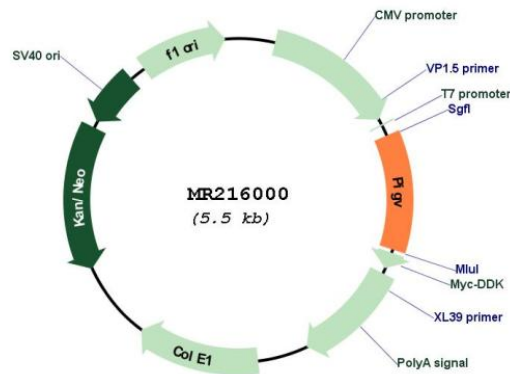
Cloning Scheme:

Cloning sites used for ORF Shuttling:



* The last codon before the Stop codon of the ORF

Plasmid Map:



ACCN: NM_001145955

ORF Size: 633 bp

OTI Disclaimer:	The molecular sequence of this clone aligns with the gene accession number as a point of reference only. However, individual transcript sequences of the same gene can differ through naturally occurring variations (e.g. polymorphisms), each with its own valid existence. This clone is substantially in agreement with the reference, but a complete review of all prevailing variants is recommended prior to use. More info
OTI Annotation:	This clone was engineered to express the complete ORF with an expression tag. Expression varies depending on the nature of the gene.
Components:	The ORF clone is ion-exchange column purified and shipped in a 2D barcoded Matrix tube containing 10ug of transfection-ready, dried plasmid DNA (reconstitute with 100 ul of water).
Reconstitution Method:	<ol style="list-style-type: none">1. Centrifuge at 5,000xg for 5min.2. Carefully open the tube and add 100ul of sterile water to dissolve the DNA.3. Close the tube and incubate for 10 minutes at room temperature.4. Briefly vortex the tube and then do a quick spin (less than 5000xg) to concentrate the liquid at the bottom.5. Store the suspended plasmid at -20°C. The DNA is stable for at least one year from date of shipping when stored at -20°C.
RefSeq:	NM_001145955.1 , NP_001139427.1
RefSeq Size:	2095 bp
RefSeq ORF:	636 bp
Locus ID:	230801
UniProt ID:	Q7TPN3
Cytogenetics:	4 D2.3
MW:	25 kDa
Gene Summary:	Alpha-1,6-mannosyltransferase involved in glycosylphosphatidylinositol-anchor biosynthesis. Transfers the second mannose to the glycosylphosphatidylinositol during GPI precursor assembly (By similarity).[UniProtKB/Swiss-Prot Function]