

Product datasheet for **MR215961**

Kansl3 (NM_172652) Mouse Tagged ORF Clone

Product data:

| | |
|---------------------------|--|
| Product Type: | Expression Plasmids |
| Product Name: | Kansl3 (NM_172652) Mouse Tagged ORF Clone |
| Tag: | Myc-DDK |
| Symbol: | Kansl3 |
| Synonyms: | 4632411B12Rik; 4932435K23; AI431067; AI647574; C85723; Kiaa1310; mKIAA1310 |
| Mammalian Cell Selection: | Neomycin |
| Vector: | pCMV6-Entry (PS100001) |
| E. coli Selection: | Kanamycin (25 ug/mL) |



[View online »](#)

ORF Nucleotide
Sequence:

>MR215961 representing NM_172652
Red=Cloning site Blue=ORF Green=Tags(s)

TTTTGTAATACGACTCACTATAGGGCGGCCGGGAATTCGTCGACTGGATCCGGTACCGAGGAGATCTGCC
GCC**CGGATCGCC**

ATGGCCACCGGGTGGGAGAGGGACTCCAGACTTCAGCTCGCGGATGGGTACCTCCCTGCTCTTCC
AGCTTTCAGTGATGAGCGGGAAGTGGACTCGTTTTCTGGATCATAGCTATGCAAAACCGTGGAGTGC
CCACCCAGATGCCAGTAGTGCCCGCCCCACCGCATGCTCTTTGTAACCCCCCGTCGCGCAGCAGGAGAAT
ACTATTGAGTCAGACGTTCCAATAGATGTGGAGACGGTACCGCAACTCCTGTTCCACTTTATGACAATC
AGAAGGCAAGAAGTGTGATGAACGAGTGTGAACGGCACGTGATCTTCGCCAGGACAGATGCAGATGCTCC
TCCTCCGCCAGAAGACTGGGAAGAACATGTCAACAGGACTGGCTGGACAGTGGCTCAGAATAAGCTATTT
AACAGATCCTCAAAGCCCTGCAGTCTGACCGCTTGCACGATTGGCCAATGAAGGGCTTGAATGAGC
CTGTGCTCGCTCGCTGGCTGTGGACAAGTGTGAAGGAGGGTGGCGCAGGCGCTGGCAAGTGCAGCTG
GGACACCAAGCTGACCCAGTGGCTGCACACCACCTCGTGGAGACCCTGAGCCTGCCCATGCTGGCTGCT
TACTTGGATGCCCTGCAGACACTGAAAGGGAAGATCCCAACTTTGATAGATCGGATGCTTGTGCTGCTCCA
ACACAAAACCTGGGGCTGCAGGAGCGGAGGCCCTTGTCCCTTCTCCTCAAGAGGCCCTGGGACCCTGCTGT
TGGTGTGCTTTCACATAACAAACCAAGCAAGCTCCCTGTTTCTCCTTTGATTCTCATCGTCTCCTGCTGGT
CCCTCCAGCTCTGTGTTCCCTGCCTCACGCCGCCACCGCTTCTGGCAGTCTCAGCTCTCCTGCTTAGGCA
AGGTATCCCTGTAGCGACCCATCTACTGAACAATGGCAGTGGGTAGGAGTTCAGTGCCTCGAACA
CATGATTGGGGCCGTGAGAAGCAAAGTGTAGAGATTACAGCCATTTCCACACAAACCCATCATCCTG
ATTGGATGGAATACGGGAGCTTTGGTGGCTGTATGTCTGTGATGGAGTACGTCACTGCTGTGTGTG
GCCTTGGGTTTCTCTGCTTACTGTGGATGGACCCAGGGGGATGTGGACGATCCCTCCCTGGATGAA
GACTCCAGTCTCTTCGTCATTGGTCAGAATTCTTACAGTGTACCCTGAAGCCATGGAGGACTTCCGG
GAAAAGATTTCAGCAGAAAATAGCTTGGTGGTGGTGGGGGAGCTGATGATAATCTCAGAATAAGCAAAG
CAAAGAAGAAATCAGAGGGCCTGACTCAGAGCATGGTGGACAGATGATTACAGGATGAGATTGTAGACTT
CCTGACTGGAGTGTCTCACTCGTGTGAGGGTCACTGGGCTCTGAGCCTCGGGATCAGGATGCTGAGAAG
AAGAAGAAACCCCGGACTTGACCCGAAGAGACCTGGCCTTTGAAATTCCTGAGCGAGGCAGTGTCTCTG
CTTCCCCAGCTGCCAGGCTCCCCACATCCCCCTCAGGCTCAGAGGATCTCTCCAGTGTGCCAGCAGCCC
CACCTTAGCCCTAAGACCAAAGTGACCACAGTACCTCTACCCAGAAAATCAAGTCAGATTGGGACCTCC
CAGCTGCTGAAAAGACATGTGCAGAGGACAGAAGCTGTGCTGACCCACAGACAAGCCAAGTCCCATT
CATCAGAATCAGTGGAGGACATAGAGAAAAGAGCTTCGGGTCCAGCTTAAGAGGCACCATTCTCCAG
TCCTCTTCTGGAGCAAAGCCTTCCAAGCGACCAAAGATCAAAGTGTCCCTGATCTCCAAAGGGGACACA
GTTGGAGGACCTTGCCTCTTTCTCAAGGTGGAACACCTGAAGCTGCCGGAGGGAAGCCCATCACCATGA
CCCTGGGAGCTTTCAGCAGGAGCCAAGGAACTCACTGGACTTCTCACTACAGCCAAGTCAAGTCTTCTGA
AGGTGGAGGTACAGCCAGCACAACCCATCTGTGGCTTCCAGCAGTGCCACACCTAATGCTATCCACAG
CTGCAGAGCCGCTTGGTGGCCACTTCTCCAGGCAGCTCCCTTCCAGGGACCGCTTCCAGCCAGCAGCTCC
TCCAGGGCCTCAGCTTACAGTACAGGATATTAGCAGCAAGACCTCTGGCCTCCAGGAAGTCCCTCCCC
AGGGCCAGCCCCACAGGCCACCAGTGTGAAATTGCCAACCCCATGCAGAGTCTGGGTGCCATCACCACA
GGCAGGACACCAATTGTCCGTACCATCCCTGTGGCCACCACTCTCTCCTCTTGGGTGCCACTCCTGGTG
GGAAGCCCACTGCCATCCACCAGCTGCTGACCAATGGGAGCCTCGCTAAGTTGGCAAGCAGCCTACCTGG
CTTGGCTCAGATTTCCAACCAAGCATCAGGCTTAAAGGTCCCCACCACCTACTCTGACGCTGCGTGGC
CAGCCAAGCAGAATTACCACGCTAAGCCCTATGGGGTCAGGGGCAACGCCGTCCGAGGAGCCCAACTCCC
AGATGCTACCATCTAGTTCACAGCGCTGCCTCCAGCACC

ACGGCTACGCGGCCGCTCGAGCAGAAACTCATCTCAGAAGAGGATCTGGCAGCAAATGATATCTGGATT
ACAAGGATGACGACGATAAGGTTTAA

Protein Sequence: >MR215961 representing NM_172652
 Red=Cloning site Green=Tags(s)

MAHRGGERDFQTSARRMGTSLLFQLSVHERELDLVFLDHSYAKPWSAHPDASSARPTRMLFVTPRRQQEN
 TIESDVPIDVETVTATPVPLYDNQKAR SVMNECERHVIFARTDADAPPPEDWEEHVNRGTVAQNKLF
 NKILKALQSDRLARLANEGACNEPVLRRVAVDKCARRVRQALASVSWDTKLTQWLHTTLVETLSLPLMLAA
 YLDALQTLKGIPTLIDRMLVSSNTKTGAAGAEALSLLLKRPWDPAVGVL SHNKPSKLPGPSPLILIVSSG
 PSSSVFPASRRHRFWQSQLSCLGKVIPVATHLLNNGSGVGLQCLEHMIGAVRSKVLEIHSFPHKPIIL
 IGWNTGALVACHVSVMEYVTAVVCLGFPLLTVDGPRGDVDDPLLDMKTPVLFVIGQNSLQCHPEAMEDFR
 EKIRAENSLVVVGGADDNLRISKAKKKSEGLTQSMVDRCIQDEIVDFLTGVLTRAEGHVGSEPRDQAEK
 KKKPRDLTRRDLAFEIPERGRPASPAARLPTSPSGSEDLSSVSSPTSSPKTKVTTVTSTQKSSQIGTS
 QLLKRHVQRTEAVLTHRQAQVPISSVESVIEKEELRVQLKRHHSSPLPGAKPSKRPKIKVSLISQGD
 VGGPCTLSQGGTPEAAGGKPIITMLGASAGAKELTGLLTTAKSSSSEGGTASTTPSVASSATPNAIHT
 LQ SRLVATSPGSSLPGTASASSLLQGLSFLQDISSKTSGLPGSPGPAQATSVKLPMPQSLGAITTT
 GTSTIVRTIPVATLSSLGATPGGKPTAIHQLLTNGSLAKLASSLPGLAQISNQASGLKVPTTITLTLRG
 QPSRITLSPMGSGATPSEEPNSQMLPSSSQLRPPAP

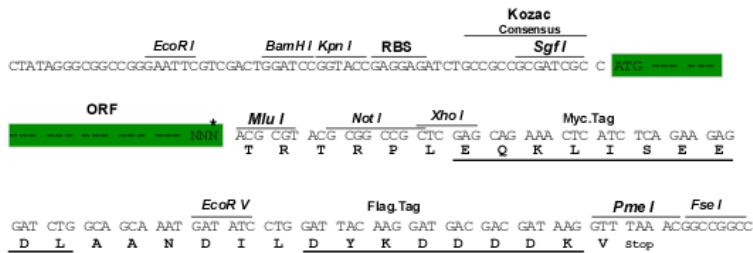
TRTRPLEQKLISEEDLAANDILDYKDDDDKV

Chromatograms: https://cdn.origene.com/chromatograms/mm9092_b10.zip

Restriction Sites: SgfI-MluI

Cloning Scheme:

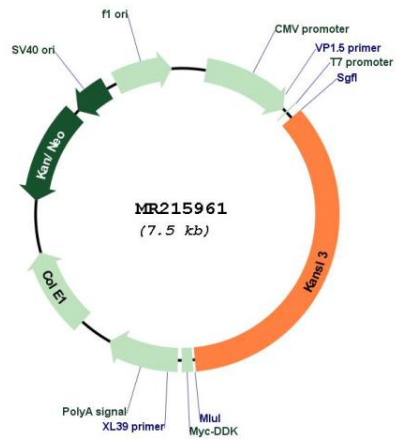
Cloning sites used for ORF Shuttling:



* The last codon before the Stop codon of the ORF

| | |
|-------------------------------|---|
| ACCN: | NM_172652 |
| ORF Size: | 2631 bp |
| OTI Disclaimer: | The molecular sequence of this clone aligns with the gene accession number as a point of reference only. However, individual transcript sequences of the same gene can differ through naturally occurring variations (e.g. polymorphisms), each with its own valid existence. This clone is substantially in agreement with the reference, but a complete review of all prevailing variants is recommended prior to use. More info |
| OTI Annotation: | This clone was engineered to express the complete ORF with an expression tag. Expression varies depending on the nature of the gene. |
| Components: | The ORF clone is ion-exchange column purified and shipped in a 2D barcoded Matrix tube containing 10ug of transfection-ready, dried plasmid DNA (reconstitute with 100 ul of water). |
| Reconstitution Method: | <ol style="list-style-type: none">1. Centrifuge at 5,000xg for 5min.2. Carefully open the tube and add 100ul of sterile water to dissolve the DNA.3. Close the tube and incubate for 10 minutes at room temperature.4. Briefly vortex the tube and then do a quick spin (less than 5000xg) to concentrate the liquid at the bottom.5. Store the suspended plasmid at -20°C. The DNA is stable for at least one year from date of shipping when stored at -20°C. |
| RefSeq: | NM_172652.3 , NP_766240.1 |
| RefSeq Size: | 4663 bp |
| RefSeq ORF: | 2634 bp |
| Locus ID: | 226976 |
| UniProt ID: | A2RSY1 |
| Cytogenetics: | 1 B |
| MW: | 93.3 kDa |
| Gene Summary: | As part of the NSL complex it is involved in acetylation of nucleosomal histone H4 on several lysine residues and therefore may be involved in the regulation of transcription. [UniProtKB/Swiss-Prot Function] |

Product images:



Circular map for MR215961