

Product datasheet for MR215903

Dip2b (NM_001159361) Mouse Tagged ORF Clone

Product data:

Product Type:	Expression Plasmids
Product Name:	Dip2b (NM_001159361) Mouse Tagged ORF Clone
Tag:	Myc-DDK
Symbol:	Dip2b
Synonyms:	4932422C22; AI317237; AI854602; mKIAA1463
Vector:	pCMV6-Entry (PS100001)
E. coli Selection:	Kanamycin (25 ug/mL)
Cell Selection:	Neomycin
ORF Nucleotide Sequence:	>MR215903 representing NM_001159361 Red=Cloning site Blue=ORF Green=Tags(s)

TTTTGTAATACGACTCACTATAGGGCGCCGGGAATTCGTCGACTGGATCCGGTACCGAGGAGATCTGCC
GCCGCGATCGCC

ATGGCGGAGCGAGGCCTGGAGCCGTCGCCGGCCGGTGGCCGCGCTGCCCCCGAGGTGCGGGCGCAGC
TGGCTGAGCTGGAGCTGGAGCTGTCTGAGGGGACATCACACAGAAAGGATATGAAAAGAAAAGGTCCAA
ACTTCTGTCTCCTACAGCCACAGACTCAAGAACTGATTCCATAGGACAAAAAGAAAGAACCAA
CCTGCTCCACGGCAGCTCAGACTTCTGCTCCTTCCAAGTATCACCGTTCACGTTCTGGAGGTGCGAGAG
ATGAGAGATACCGATCAGATATCCACACGGAAGCAGTCCAAGCTGCTCTGGCAAAACACAAAGAACAGAA
AATGGCTTTGCCAATGCCACCAAGAGGCGGTCCACATTTGTCCAGTCTCCTGCGGATGCCTGCACACCT
CCGGACACGTCTTCGGCCTCTGAGGATGAGGGCTCTCTGAGACGCCAAGCTGCGCTCTCTGCTGCCTTG
ACAAAGCTTGCAGAATGCTGAGTCTGGATCAACCGCTCAATTCAGGGATCGTCCACTTCTTCACTG
ATCTTCCACGCTGTCCCATGGAGAGGTCAAAGGAACAGTGGGTCTCTAGCTGATGTGTTTGCCAACT
CGAATAGAAAATGTCTGCTCCTCCGACGCTCACTGCAACTACCTTTCCTCCTTCTCCTCACTTCGCC
CTGCAAAACATTGACCTGCCCCCTCTGGCATAGTTAAAGGCATGCACAAAGGATCCAACAGTCCAGCCT
TATGGATACAGCTGATGGTGTTCCTGTCAATAGCAGGGTGTCCACAAAAATTCAGCAGCTTCTCAACACC
CTGAAGCGACCCAAAAGACCCCTTAAAGGAATTTTTGTGGATGACTCTGAAGAAATTGTGGAAGGTA
TACCTCAGCCAGATCCCAACAGCCAAAGCCTGAAGGCCGCCAGATGACCCAGTGAAGGAGAGCCCT
GGGCGTCACTGTAAGTGGCCACCTGCACTGGAATCTGCCCTGCAGCGCTGGGGCTACCCAAGCCAAG
TGCCCTGCCTGACTGGCTGGATGTGACGGGAAACAGTCTACACTCTCACATACGAAAAGTTGTGGA
GCAGAAGTTAAAGTTGGCTTACACACTGCTTAATAAACTGGGAACAAAAATGAACCTGTGTTAAACC
TGGAGACAGGGTTGCCCTGGTTTACCCCAACAATGACCCTGTATGTTTATGGTGGCTTTTTATGGATGT
CTCCTGCGAGAAGTGATTCCAGTACCCATAGAAGTACCCCTGACCAGAAAGGATGCCGGAGTCCAGAGA
TTGGCTTCTTGTAGGGAGCTGTGGGATTGCCTTAGCTCTCACCAGTGAATTTGTCTGAAAGCCCTGCC
AAAAACCCAGAATGGAGAAATTGTACAGTTTAAAGGTTGGCTCGCCTCAAGTGGGTTGTGACAGATTCT
AAGTACCTCTCGAAGCCGCCAAAGACTGGCAGCCACACATATCACCTGCGGGCACGGAACCGGCATACA



[View online »](#)

TTGAGTATAAAACAAGCAAAGAAGGGAGTGTGATGGGAGTCACGGTGTGCGGGCTCGCAATGCTGTCTCA
 GTGCCAAGCTCTGTACAGGCCTGCAATTATTCTGAAGGAGAACTGTAGTAAATGTTTTAGACTTTAAG
 AAGGACGCTGGGCTGTGGCATGGCATGTTTGCGAATGTAATGAATAAGATGCATACAATTAGTGTACCC
 ACTCTGTTATGAAGACCTGTCTCTCTCTGGGTCCAGAGAGTCCATGCTCACAAGCCAAAAGTAGCATT
 AGTGAAGTGTGAGACTTACACTGGGCCATGATGGCACATCGGGACCAAGGGACGTAAGCCTGAGCTCT
 CTGCGGATGCTGATTGTACCCGACGGCCCAATCCCTGGTCTGTGTCGTCCTGTGATGCTTTCCTGAGTC
 TCTTCCAAGCCACGGACTGAAACCTGAGGCCATCTGTCCATGTGCCACATCTGCAGAGGCCATGACTGT
 AGCCATCCGAAGGCCTGGGGTTCAGGGGCTCCTTTGCCAGGAAGGCCATTCTCTCAATGAATGGACTG
 AGCTATGGGGTCATACGGGTCAATACTGAGGATAAAAAATTCAGCACTGACAGTTCAGGATGTGGGACATG
 TGATGCCTGGAGGCATGATGTGCATTGTGAAACCAGACGGACTTCCTCAGCTCTGCAGGACAGATGAGAT
 TGGAGAGATCTGTGTCAGCTCCAGGACTGGAGGGATGATGTAATTTGGACTTGCTGGTGTGACCAAAAAT
 ACATTTGAGGTGATTCCAGTGACTTCTTCAAGGCTCCTGTAGGGGACGTACCCTTCATCCGGTCAGGGC
 TGCTGGGATTTGTAGGGCCTGGTAGCTTGGTGTTCGTGGTTGAAAAATGGATGGATTACTCATGGTCAG
 CGGCCGAAGACATAACGCCGATGACATTGTTGCTACTGGATTGGCTGTGGAGTCCATAAAGACCGTCTAT
 CGAGGAAGAATTGCTGTGTTTTCTGTGCTGTGTTTTATGACGAGCGCATTGTGGTGGTGGCAGAACAAA
 GGCCCGATGCGTCTGAGGAAGACAGTTTTCCAGTGGATGAGCCGGGTGCTGCAGGCCAATCGACAGCATCCA
 TCAAGTCGGCGTGTACTGTCTTGCCCTGGTGCCAGCTAACACGTTACAAAAACCCCACTAGGAGGAATC
 CATATATCCCAGACAAAACAGCTCTTTCTGGAGGGTCTCTACACCCGTGTAATATCCTCATGTGCCAC
 ATACGTGTGTGACGAACCTGCCAAAGCCCGACAAAAGCAACCAGGTGTAGGCCCTGCTTCTGTGATGGT
 TGGGAATCTGGTGTGTTAAACGCATAGCACAGGCTGCCGGAAGGGACCTGGGCCAAAATAGAAGAGAAT
 GACCTGGTGAAGAACACCAGTTCCTGGCAGAGATTTGTCAGTGGCGAGCCAGGCAACTCCTGACCATG
 TCCTCTCATGCTGTTAAATGCCAAGGGAACACTGTGTGCACAGCCAGCTGCCTTCAGTTCATAAGCC
 AGCAGAGAGGATCGCTTCACTTGGTGACAAGGGACATCTGAATGCAGGGGACAATGTAGTATTGCTC
 TACCCGCCTGGCATCGAGTTGATTGCTGCATTCTACGGCTGCCTGTATGCAGGATGTATACCTGTGACCC
 TGCGGCCCTCATGCGCAGAACCTCACTGCTACCTTGCCACAGTACGCATGGTGTGATGTGACGAA
 GGCAGCGTGTGCTTACCCTCAAACCTCTGATGAGGTTGCTCAAGTCTCGAGAGGCAGCGGCAGCTGTG
 GATGTGAAAACCTGGCCAGCCATCATTGATACAGATGACTTACCAGGAAACGGCTACCTCAGCTGTATA
 AACCGCCACTCCTGAGATGTTGGCGTATCTTGATTTTCCAGCGTTTCCACAACCTGGCATGCTCACAGGGT
 GAAGATGTCCACTCTGCAGTCAATGCTCTCTGCAGAGCCATCAAGCTGCAGTGCGAATTGACTCTTCC
 CGGCAGATCGCCATCTGCCTTGACCCTTACTGTGGACTTGGCTTTCAGCTCTGGTGTCTCTGCAGTGTG
 ATTCGGGTACCAGTCCGTCTTGATCCCTCCTATGGAGCTGGAAAACAACCTTTTCTCTGGCTCGCCAC
 TGTCAACCAGTACAAGATCAGGGACACCTTCTGCTCCTACTCAGTCATGGAGCTGTGCACTAAAGGGCTG
 GGAACCAAGGTGGAGGTGCTGAAGACCAGAGGGATCAATCTTTCTGCATCCGGACCTGTGTGGTGGTGG
 CAGAGGAGCGGCCCGTGTGAGCCTTACAGCAGTCTTCTCAAGCTCTTCAAAGACATCGGTCTGTCCCC
 TCGAGCTGTGACACCCTTTGGATCCAGAGTCAATGTAGCAATATGTTTACAGGGAACCTCAGGGCCG
 GATCCAACAACCTGTGATGTGGATCTGAAGTCGCTGAGACATGACAGGGTCCGTCTTGTGGAACGGGGT
 CCCCCAGAGCCTCCTGCTTTCTGAATCTGAAAGATCTTACCTGGAGTAAAAGTAGTTATTGTCAATCC
 TGAGACCAAGGACCTGTTGGAGACTCTACCTGGGAGAGATCTGGTGAATAGCCCCATACCCGACG
 GGCTACTATACCATCTACGACAGCGAGACTCTTCAAGCTGATCATTTCAATACCCGTCTGAGCTTTGGAG
 ATGCTGCCAGACACTCTGGGCCCGACAGGATACCTCGGGTTTGTCCGAGGACTGAGCTCACTGCAGC
 CACTGGAGAACGCCATGACGCCTTGTATGTGGTGGTGGCTGGATGAGACACTGGAGCTGAGGGGATTG
 CGATACCATCCTATCGATATAGAGACCTCCGTGTCCCGCGTCCACAGGAGCATTGCTGAATGTGCTGTG
 TCACGTGGACCAACTTGTGGTGGTGGTGTGGAACACTATGCGGCTCTGAACAGGAAGCCCTGGACCTGGT
 TCCTCTCGTGACCAATGTGGTCTGGAAGAGCATTACCTCATCGTGGTGTGTGGTGTGGTGGACCCG
 GGCGTTGTCCCATCAACTCCAGAGGAGAGAAGCAGAGGATGCACCTCCGAGACAGCTTCTCGCCGACC
 AGTTAGACCCTATCTATGTGGCTTACAACATG

ACGCGTACGCGGCGCTCGAGCAGAAACTCATCTCAGAAGAGGATCTGGCAGCAAATGATATCCTGGATT
 ACAAGGATGACGACGATAAGGTTTAA

Protein Sequence: >MR215903 representing NM_001159361
 Red=Cloning site Green=Tags(s)

MAERGLEPSPAAVAALPPEVRAQLAELELELSEGDITQKGYEKKRSKLLSPYSPQTQETDSIGQKERNQT
 PAPTAAQTSAPSKYHRSRSGGARDERYRSDIHEAVQAALAKHKEQKMALPMPTKRRSTFVQSPADACTP
 PDTSSASEDEGLRRQAALSAALQQSLQNAESWINRSIQGSSTSSASSTLSHGVEVKGTSGSLADVFANT
 RIENVSAPPDVTATSSSSSSLRPANIDLPPSGIVKGMHKGNSRSLMDTADGVPVNSRVSTKIQQLLNT
 LKRPRPPLKEFFVDDSEEIVEGIPQDPNPQKPEGRQMTVPKGEPLGVICNWPPALESALQRWGSTQAK
 CPCLTGLDVTGKPVYTLTYGKLWSRSLKLAYTLLNKLGTKNEPVLPKGDVALVYPNNDPVMFMVAFYGC
 LLAEVIVPIEVPLTRKDAGGQIQIFLLGSCGIALALTSEICLKGLPKTQNGEIVQFKGWPRLKWVVTD
 KYLSKPPKDWQPHISPAGTEPAYIEYKTSKEGSVMGVTVSRLAML SQCQALSQACNYSEGETVVNVLDFK
 KDAGLWHGMFANVMNMHTISVPYSVMKTCPLSWVQRVHAHKAKVALVKCRDLHWAMMAHRDQRDVSLS
 LRMLIVTDGANPWSVSSCDAFLSLFQSHGLKPEAICPCATSAEAMTVAIRRPGVPGAPLPGRAILS
 MNGLSYGVIRVNTEDKNSALTVQDVGHVMPGGMMCIVKPDGLPQLCRTDEIGEICVSSRTGGMMYFGLAGVTKN
 TFEVIVPTSSGSPVGDVPFIRSGLLGFVGPGLV FVVGKMDGLLMVSGRRHNADDIVATGLAVESIKTVY
 RGRIAVFSVSFVYDERIVVVAEQRPDASEEDSFQWMSRVLQAIDSIHQVGVYCLALVPANTLPKTP
 LGGIHSQTKQLFLEGLHPCNILMCPHTCVTNL PKPRQKQPGVGPASVMVGNLVAGKRIAQAAGRDLGQIEEN
 DLVRKHQFLAEILQWRAQATPDHVL FMLLNAGTTVCTASCLQLHKRAERIASVLGDKGHLNAGDNVLL
 YPPGIELIAAFYGCYAGCIPVTVRPPHAQNL TATLPTVRMVVDVSKAACVLTQTLMRLKLSREAAAAV
 DVKTWPAIIDTDDLPRKRLPQLYKPTPEMLAYLDFSVSTTGMLTGVMKSHSAVNALCRAIKLQCELYSS
 RQIAICLDPYCGLGFALWCLCSVYSGHQSVLIPMELENNLFLWLATVNQYKIRDTFCSYSVMELCTKGL
 GNQVEVLKTRGINLSCIRTCVVVAEERPRVSLQQSF SKLFDIGLSPRAVSTTFGSRVVAICLQGTSGP
 DPTTVYVDLKSLRHRVRLVERGAPQSLLLSESGKILPGVKVVI VNPETKGPVGDHSLGEIWNVSPHTAS
 GYTYIDSETLQADHFNTRL SFGDAAQTLWARTGYLGFVRRTELTAATGERHDALYVVGALDETLELRGL
 RYHPIDIETSVSRVHRSAECAVFTWTNLLVVVVELCGSEQEALDLVPLVTNVVLEEHYLVGVVVVDP
 GVVPIINSRGEKQRMHLRDSFLADQLDPIYVAYNM

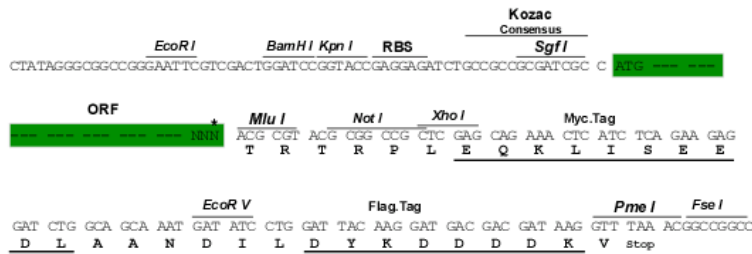
TRTRPLEQKLISEEDLAANDILDYKDDDDKV

Restriction Sites:

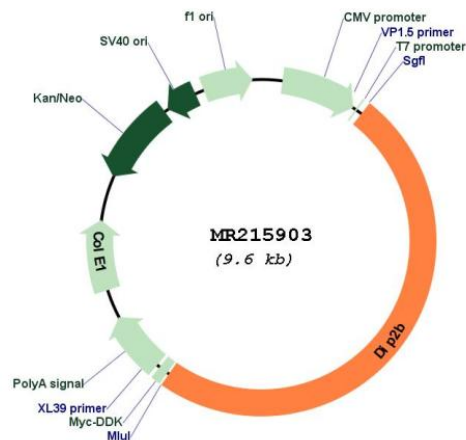
SgfI-MluI

Cloning Scheme:

Cloning sites used for ORF Shuttling:



* The last codon before the Stop codon of the ORF

Plasmid Map:


ACCN: NM_001159361

ORF Size: 4722 bp

OTI Disclaimer: The molecular sequence of this clone aligns with the gene accession number as a point of reference only. However, individual transcript sequences of the same gene can differ through naturally occurring variations (e.g. polymorphisms), each with its own valid existence. This clone is substantially in agreement with the reference, but a complete review of all prevailing variants is recommended prior to use. [More info](#)

OTI Annotation: This clone was engineered to express the complete ORF with an expression tag. Expression varies depending on the nature of the gene.

Components: The ORF clone is ion-exchange column purified and shipped in a 2D barcoded Matrix tube containing 10ug of transfection-ready, dried plasmid DNA (reconstitute with 100 ul of water).

Reconstitution Method:

1. Centrifuge at 5,000xg for 5min.
2. Carefully open the tube and add 100ul of sterile water to dissolve the DNA.
3. Close the tube and incubate for 10 minutes at room temperature.
4. Briefly vortex the tube and then do a quick spin (less than 5000xg) to concentrate the liquid at the bottom.
5. Store the suspended plasmid at -20°C. The DNA is stable for at least one year from date of shipping when stored at -20°C.

RefSeq: [NM_001159361.2](#)

RefSeq Size: 8915 bp

RefSeq ORF: 4725 bp

Locus ID: 239667

UniProt ID: [Q3UH60](#)

Cytogenetics: 15 F1

MW: 171.6 kDa

Gene Summary: Negatively regulates axonal outgrowth and is essential for normal synaptic transmission (PubMed:32153366). Not required for regulation of axon polarity (PubMed:32153366). Promotes acetylation of alpha-tubulin (PubMed:32153366).[UniProtKB/Swiss-Prot Function]