

Product datasheet for **MR215880**

Dcaf6 (NM_028759) Mouse Tagged ORF Clone

Product data:

Product Type:	Expression Plasmids
Product Name:	Dcaf6 (NM_028759) Mouse Tagged ORF Clone
Tag:	Myc-DDK
Symbol:	Dcaf6
Synonyms:	1200006M05Rik; lqwd1; PC326
Mammalian Cell Selection:	Neomycin
Vector:	pCMV6-Entry (PS100001)
E. coli Selection:	Kanamycin (25 ug/mL)



[View online »](#)

ORF Nucleotide Sequence:

>MR215880 representing NM_028759
 Red=Cloning site Blue=ORF Green=Tags(s)

TTTTGTAATACGACTCACTATAGGGCGGCCGGGAATTCGTCGACTGGATCCGGTACCGAGGAGATCTGCC
 GCC**CGGATCGCC**

ATGGCTCGGAGTGGCTCCTGCCCGCACCTGTTGTGGGACGTGAGGAAAAGTCCCTTGGGCTGGAGGACC
 CGTCCCGCTGAGGAGCCGCTACCTGGGAAGAAGAGAATTTATCCAAAGATTAAGCACTTT
 AAATGTGCATGATGGCTGTGTTAATAACAATCTGTTGGAATGACACTGGAGAATATATTTTATCTGGCTCT
 GATGACTAACTTGTAAATAGTAATCCATACAGCAGAAAAGTTTTGACAACCATCCGTTCCAGGCATC
 GAGCAATATATTTAGTGCAAAGTTTTTCCCGTGCACAGATGATAAGCAGATTGTGCTTCTGGAGA
 TGGAGTCATATTTATACTAACATTGAGCAAGATGCAGAACTAACAGACAGTGCCAATTTACGTGCCAT
 TATGGAACACTTATGAGATTGACTGTACCAAACGACCCTTACACCTTCTGCTGTGGTGAAGATG
 GAACTGTTAGGTGGTTTACACACGCATCAAACCAGTTGCACAAAAGAAGACTGTAAGATGATATTTT
 AATCAACTGTAGGCGTGTGCCACATCTGTGGCTATTTGTCCCCAGTACCATATTACCTTGTGTGGGT
 TGTTCGACAGCTCAGTACGGATTTATGATCGGCGAATGCTGGGCACAAGAGCTACAGGGAATTATCGAG
 GCCGAGGAACTACTGGAATGGTTGCTCGATTTATACCTTCTCATCTTAGTAAACAATCATGCAGAGTGAC
 ATCACTGTGTACAGTGAAGATGGTCAAGAGATTCTTGTGAGTTATTCTTACAGTACATCTATCTTTT
 GACCCCAAAGTGATACTGCACGAGAAGTAAACTCCTTCTGCAGAGGAGAGGCCGAGAAGATTACGAC
 AGCCTCCAGTTAAGCGCTTGAGACTTCGTGGTATTGGTCCAGATACTGGTCCCAGAGCACGGCCAGAAA
 TGAACGAGAACGAGATGGAGAGCAAAGTCCCAATGTGTCAGTGTGCAGAGAATGTCTGATATGTTATCA
 AGGTGGTTTGAAGAAGCAAGTGAAGTTGCACAAAGCAACAGAGGAAGAGGAAAGACCTCGGCCAGAGGTG
 GAACAAATCAGCCAGATGTTCAACTCTTCCACGGTTCATCAAGTCCATAATTTGGAAGTGTGAAAC
 TGCAATGGATGTAGACATGCCAGCTGCATCTTTCAGCCTTCTACATCCTCTACAGATCCAGTTCAGGCT
 CAGGCAGCCACAGCCGCATAGAAAGCCCTCGTTCAGCTCGTTGCTGTCTTGCCAGACAGTGAACCGA
 GGCAGTCTGTTGAGGCGTCTGGACACCATGCACATCATCAGTCAAGTAATGAGAGGCTGAGCCC
 CAAACCAGGGACAGTGAACCCGTTTTAAGTTTGCAGTACAGCACAGAAGGAACAACATAAGCACAATA
 AAAGTGAATTTACAGATGAATGGAGCAGTACAGCCTCAAGTCCAGAGGAAATGGGAGCCATTGCAAT
 CTGAGGGTCAGGAAGAATGCTTGGTCCCTCCGAGCTCTGTGCAGCCACCGAAGGAGACAGTGAACAAG
 AGCTCCTGAAGAATATCAGAGAAAGAACACTCCAGAAAACCTCACTCAAACAGATAGATACAGCA
 CAACTTGATAACTCCCAGCTGAGCCATTGGATTCTAACTCAGGAGAGAAGAATAACCCAAGTCAGGACA
 GCCCTTGTGGGCTTCCAGAAGAAGGCACCTTGTCTGAAACAGACAGGGAGACTTGTGAGCAGGCCAGCAC
 TGAGAGTGCTACCAGGCATGCTAGCACCAAGCCTGAACTCCCATCCCAGACAGAAGCCATTGAGCAGGCC
 AGCACTGAGAGTGCTACCAGGCATACCAGTGCCAACTCCTGAACTCCCATCCCAGACAGAAGCCATAGCAC
 CTTTAGCTCATGAAGACCATCTGCCAGGGACTCTGCTCTCCAGGACACAGATGACAGCGATGATGATCC
 GGTCTTGATCCCTGGTGAAGATACCGAACAGGACCTGGTGTAGACGCTCCGCTGTTGCCCGCATTGAG
 GAGTCTTCAGGAGGAGAAAAGAAAGGAAAGAAATGGAAGAGCTGGATACTTTGAACATTAGGAGGCCAC
 TAGTAAAGATGGTTTATAAGGGCCACCGCAACTCCCGACAATGATAAAAAGAAGCCAATTTCTGGGGTGC
 TAACTTTGTAATGAGCGTTCCGATTGTGGCCATATCTTCTCATCTGGGACCGGCACACTGCTGAGCATTG
 ATGCTTCTGGAAGCTGATAATCATGTGGTCAACTGCCTGCAGCCCCATCGGTTTGACCAATTCTAGCCT
 CATCTGGCATAGATTATGACATAAAGATCTGGTGCCTACTAGAAGAGTCAAGAATTTTTAATCGAAAAC
 TGCTGATGAAGTTATAACTCGGAATGAACTCATGCTGGAAGAGACTCGGAACACCATCACCGTCCCAGCC
 TCTTTCATGTTGAGGATGTTGGCGTCACTGAATCATATCCGAGCTGACCGTCTGGAGGGTACAGATCAG
 AAGTTCAGGTCAGGAGAATGAAATGAGGATGAAGAA

ACGCGTACGCGGCCGCTCGAGCAGAAAAC**T**CATCTCAGAAGAGGATCTGGCAGCAATGATATCTGGATT
 ACAAGGATGACGACGATAAGGTTTAA

Protein Sequence: >MR215880 representing NM_028759
 Red=Cloning site Green=Tags(s)

MARSGSCPHELLWDVRKRSLGLEDP SRLSRYLGRREFIQRLKLEATLNVDHGCVNTICWNDTGEYILSGS
 DDTKLVISNPYSRKVLTTIRSGHRANIFSAKFLPCTDDKQIVSCSGDGVIFYTNIEQDAETNRQCQFTCH
 YGTTYEIMTVPNDPYTF LSCGEDGTVRWFDTRIKTSCTKEDCKDDILINCRRAATSVAICPPVPYLLAVG
 CSDSSVRIYDRRMLGTRATGN YAGRGTGMVARFIPSHLSNKSCRVTSLCYSEDGQEILVSYSSDYIYLF
 DPKDDTARELKTPSAEERREELRQPPVKRLRLRGDWSDTGPRARPESEERDGEQSPNVSLMQRMSDMLS
 RWFEEASEVAQSNRGRPRRGGTNQPDVSTLPTVPSPPNLEVCETAMDVMPAALLQPSTSSDPVQA
 QAATAAIESPRSSLLSCP DSEPRQSVEASGHHAHQSDNSNERLSPKPGTGEPVLSLHYSTEGTTTSTI
 KLNFTDEWSSTASSRGN SHCKSEGQEECLVPPSSVQPPEGDSETRAPEELSEKGTLPENLTQNQIDTA
 QLDNFP AEPLDSNGEKNNSQDSPCGLPEEGLSETDRETCEQASTESATR HASTKPELPSQTEAIEQA
 STESATRHTSANPELPSQTEAIAPLAHEDPSARDSALQD TDDSDDPVLIPGARYRTGPGDRRS AVARIQ
 EFFRRR KERKEMEELDTLNIR RPLVKMVYKGRNSRTMIKEANFWGANFVMSGSDCGHIF IWRDHTAEHL
 MLL EADNHVVNCLQPHFPDILASSGIDYDIKIWSPLEESRIFNRKL ADEVITRNLML EETRNTITVPA
 SFMLRMLASLNHIRADRL EGDRSEGGQENENEDEE

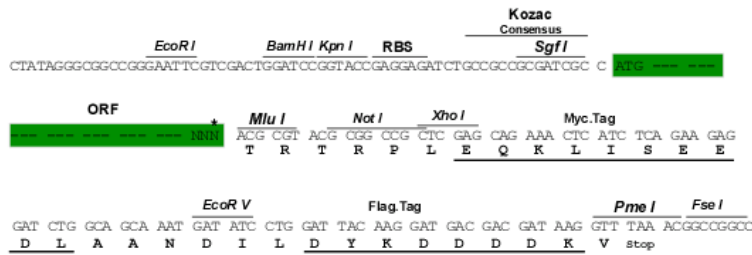
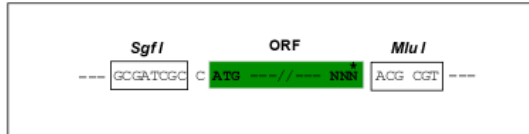
TRTRPLEQKLISEEDLAANDILDYKDDDDKV

Chromatograms: https://cdn.origene.com/chromatograms/mm9102_e02.zip

Restriction Sites: SgfI-MluI

Cloning Scheme:

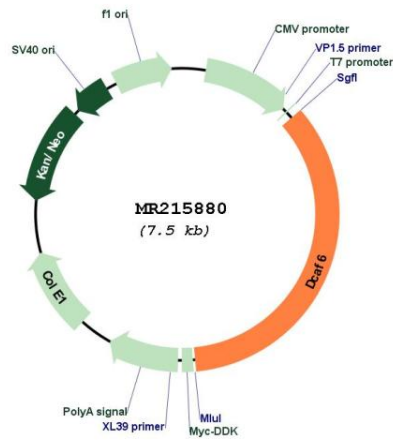
Cloning sites used for ORF Shuttling:



* The last codon before the Stop codon of the ORF

ACCN:	NM_028759
ORF Size:	2628 bp
OTI Disclaimer:	The molecular sequence of this clone aligns with the gene accession number as a point of reference only. However, individual transcript sequences of the same gene can differ through naturally occurring variations (e.g. polymorphisms), each with its own valid existence. This clone is substantially in agreement with the reference, but a complete review of all prevailing variants is recommended prior to use. More info
OTI Annotation:	This clone was engineered to express the complete ORF with an expression tag. Expression varies depending on the nature of the gene.
Components:	The ORF clone is ion-exchange column purified and shipped in a 2D barcoded Matrix tube containing 10ug of transfection-ready, dried plasmid DNA (reconstitute with 100 ul of water).
Reconstitution Method:	<ol style="list-style-type: none">1. Centrifuge at 5,000xg for 5min.2. Carefully open the tube and add 100ul of sterile water to dissolve the DNA.3. Close the tube and incubate for 10 minutes at room temperature.4. Briefly vortex the tube and then do a quick spin (less than 5000xg) to concentrate the liquid at the bottom.5. Store the suspended plasmid at -20°C. The DNA is stable for at least one year from date of shipping when stored at -20°C.
RefSeq:	NM_028759.1 , NP_083035.1
RefSeq Size:	3306 bp
RefSeq ORF:	2631 bp
Locus ID:	74106
UniProt ID:	Q9DC22
Cytogenetics:	1 H2.2- H2.3
MW:	97.6 kDa
Gene Summary:	Ligand-dependent coactivator of nuclear receptors. Enhance transcriptional activity of the nuclear receptors NR3C1 and AR. May function as a substrate receptor for CUL4-DDB1 E3 ubiquitin-protein ligase complex (By similarity).[UniProtKB/Swiss-Prot Function]

Product images:



Circular map for MR215880