

Product datasheet for **MR215875**

Cep95 (NM_177088) Mouse Tagged ORF Clone

Product data:

Product Type:	Expression Plasmids
Product Name:	Cep95 (NM_177088) Mouse Tagged ORF Clone
Tag:	Myc-DDK
Symbol:	Cep95
Synonyms:	4732496G21Rik; AI118346; AI448335; Ccdc45; D330027A14Rik; F630025I20Rik
Mammalian Cell Selection:	Neomycin
Vector:	pCMV6-Entry (PS100001)
E. coli Selection:	Kanamycin (25 ug/mL)



[View online »](#)

ORF Nucleotide Sequence:

>MR215875 representing NM_177088
 Red=Cloning site Blue=ORF Green=Tags(s)

TTTTGTAATACGACTCACTATAGGGCGGCCGGGAATTCGTCGACTGGATCCGGTACCGAGGAGATCTGCC
 GCC**CGGATCGCC**

ATGGCCAGCTCAGAGGCTGAATGGGTAACAATTGCCAATAACCTCCTTTTTAAATGTCACATACACCTGA
 GGATACACGAACCTCAAGACTGTGATGCTAATGTTTTATTGCCCTTTATCAATCCATTTTGGGAGAAAA
 GGTACCAGACCTCATAGTTCTTCCAGGAATCAAGAAGACGAGGCCACAAATGTCCAAGCGGTAATTGAT
 TCACTCGCTTTGGATTACCTTCAGGTGAGCCTGTCTCACATAACAGGAGAAAAACATAGTAAAGGGGATA
 ATGAATCTATCAGGAATCTCCTAGAAAATTTTGTGGATTGCTGGATTATCTGACAGAACACATCAGTGA
 ATCGTCTCCCAACAAAAGTGAAGTGAAGTGAAGTGAAGTGAAGTGAAGTGAAGTGAAGTGAAGTGAAGT
 CTAGAACGTACCGAGGAGCGAAGTGGAGAAACGCTTCTTTATGAGGTGTTCTTCTCATCGGACACTT
 TGGGCCACCTGGGATGAAGACGAAGCTGAGTCCACAGGTGAAATAATTAGGCTGGGAGACACTGCACA
 TACCTTTTCCCAAGAAGTAATGGTGTCTAAAATTCTAAGGACTTACGGTCTAGAAAAGCCTCGGCTTCA
 CCAGGCGTTGAGCCACCTGAGGAAATGTTGAACCTGGCCATTGGGTTTTCTTTCCAGAAATGGGCCAC
 CTTGTGAGGCAGCATCAGAAACTCCTCCTATGAGCATGGTTCCAAGTGCCAGGAAGCTAGGCGAGCCGAT
 CCGAGCTGCCATTCCTTTACATCCTCCCTACCATCCTTCTGAGCCTAGAGCACCATGTCCCATAGGCAAA
 GAATACCTCTGGTCAAGTCGCTACTTGTCTACGCCGACTTCTGGAGAGCAGATGGCACCTTCTGTGGAAC
 CAGATGATGCTTTCTAACTTCTACCTATTTAAAGATGATGATCAGGAAACATATCTACCTAAACCTGA
 AGCCACCAGGACAAGGAAGCCTTCTAAAGGAGAAAAGAGATGAAAACAGAGCTGCGATCCCCTCAGAGCAT
 CTGCCTTTCTCTCAGAAGGCCAGGAAGCGTTAACAGAACAAAGAACTGCACGCCATGTGAGAACTCT
 CTCAGCGGCTCTGAACTAGACTGGATGTTAAAAACTGCCCTGGGTGATCGAGGAACCGGAACTGA
 TGGTAATGATGGTGTGAGCGGAGGTGAGGAGGTGCGCAGTGGGAACGAGGAGATGCTCTCGCAGCACAGT
 GACAGCGTCATGGAGTACGGACCAAGAAGCCGAGGCCAGGATTTTCTACGTGCAGAAAGGCACCTTACA
 GGTCCCATTCACTGTCGCCATCTTCAGTGAACAAACACAGACAATTAGAGAAAAGAGAAAAAAGGCAGCA
 CAAATCTAAAGGGACAGACTCATGCCATTTCCAAGCAAAGGCACTGACTGAAGCATTGAAACGGAACTA
 AGAAAACATAAAGTTCAAGAGAAGCTTGGACTTCGAGGGATAAGGGAGGAGGAGGAAGAGGAAAGGAAA
 CAGGGAAGTCATACAGAGAAGTCGTTCTTAAAGGAACTTCAAACGGAGTCAGGTCCAGAAGACTTACTC
 CAGAAAAACTGCAGCTCCAAGTCCAAAAGGAGATGGTGCCTGAAGTCAAGCAAGGCGTCTCCGATGAAA
 GTAAGTGAACACAGTCTGCTATCCCTGATGCTGGAACAGTTTCCATTTCTATGTTTCTGACCCAAAC
 TGACCAAATGTGGAAGCAGCAGATGGCCAGGTTGAACAACCTAAAAGGGAAGCGCAGAGAGAGAACCG
 ATCCAAGAAGAACTCCAGGATGAAATAGAAGAAGCCCTGAGAAGGCATGACCTCCTCACTGCTCTTGTC
 AAGAAAAGAAATGACCATAACAAGAGGCTGCAAGACTTCAGGGACCGAATTGAGAGACAAAGGTTGACCC
 AATCAAAGATAAAAGAAAATCGTCATCAAAGTGTTCGTGCCCGGAAAATATATGATGATTACAGAGTTCA
 GTTACGTGCAAAAATGATGAAGATGAGAACCCGGGAAGAAATGATCTTTAAGAACTGTTTGAAGAAGGT
 TTACAAATTCAGAAACAAAGACTACGAGACCTAAGAACTACGCCAAAGAGAAACGCAACGAAGAAAAGA
 GACAGCACCAAGATGAGCTGGACTCGATGGAGAACCCTATAAGGACCAGTTTTCATTGCTAGCAGAAGC
 CATCTCACAGGAACGTCAAGAACTCAAAGTGAAGACAGAAATCCAGGCTCAGACATTACATAAGGTGAAG
 AGGGAGCTGAGAGCTAAAATGGAGAAGGAGATTACGCAACTGCAGCACATGATAACGCAGAACGACGATG
 ATGCTTTCTTCCGGGAGCTAGAAGCTGAGCGCTTCAAAGCTCGGCTGCAGTTGGCTTCTTCCAGTACAG
 TAAAAATCCTTTCCCAAGAGGCCAAACTTCA

ACGCGTACGCGGCCGCTCGAGCAGAACTCATCTCAGAAGAGGATCTGGCAGCAATGATATCCTGGATT
 ACAAGGATGACGACGATAAGGTTTAA

Protein Sequence: >MR215875 representing NM_177088
 Red=Cloning site Green=Tags(s)

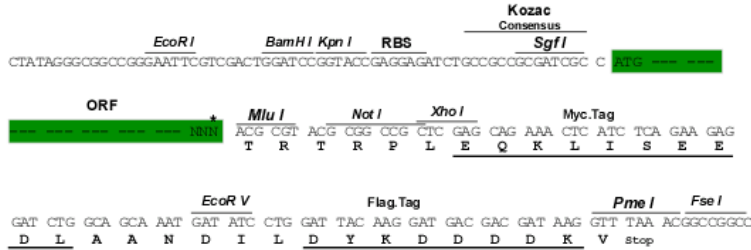
MASSEAEWVTIANLLFKCHIHLRIHELQDCDANVFIALYQSILGEKVPDLIVLPRNQEDEAHNVQAVID
 SLALDYLQVSLSHITGENIVKGDNESIRNLEIFDGLLDYLTEHISESSPNKSETEQYSKDSHGEEAGED
 LERTEEAKWRNASFMRCFSDDLPTGPTWDEDEAESTGEIIRLGDTAHTFSQRSNGAQNKDLRSRKASAS
 PGVEPPEEMLNPGPLGFLSQNGPPCEAASETPPMSMVPSARKLGEPIRAAIIPLHPPYHPSEPRAPCPGK
 EYLWSSRYLSTPTSGEHMAPSVEPDDAFLTSTLFDKDDQETYLKPEATRTRKPSKGERDENRAAIPSEH
 LPFSQKARKPLTEQELHAMSEKLSQRLSELDWMLKTALGDRGTGETDGNDDGGGEEVRSNGEMLSQHS
 DSVMEYGPKKPRPGFSTCRKAPYRSHSLSPSSVNHKQLEKEKKRQHKSKGTDSCHFQAKALTEAFEREL
 RKHKVQENVGLRGIREEEEEEEETGKSYREVVPKGTSKRSQVQKTYSRKTAAPSPKGDGRLKSSKASPMK
 VSEHSLSLMLEQFPFLYVSDPTLTKMWKQMQAQVEQLKREAQRENRSKSKLQDEIEEALRRHLLTALV
 KKEYDHNKRLQDFRDRIQRQLTQSKIKENRHQSVRARKYYDDYRVQLRAKMMKMRTEEMIFKKLFEEG
 LQIQKQLRDLRNYAKEKRNEEKRQHQNELDSMENHYKQFSLLAEAISQERQELKVRQKFAQTLHKVK
 RELRAKMEKEIQQLQHMITQNDDDAFFRELEAERFKARLQLASFQYSKNPFPRGQTS

TRTRPLEQKLISEEDLAANDILDYKDDDDKV

Restriction Sites: Sgfl-MluI

Cloning Scheme:

Cloning sites used for ORF Shuttling:



* The last codon before the Stop codon of the ORF

ACCN: NM_177088

ORF Size: 2481 bp

OTI Disclaimer: The molecular sequence of this clone aligns with the gene accession number as a point of reference only. However, individual transcript sequences of the same gene can differ through naturally occurring variations (e.g. polymorphisms), each with its own valid existence. This clone is substantially in agreement with the reference, but a complete review of all prevailing variants is recommended prior to use. [More info](#)
OTI Annotation: This clone was engineered to express the complete ORF with an expression tag. Expression varies depending on the nature of the gene.

Components: The ORF clone is ion-exchange column purified and shipped in a 2D barcoded Matrix tube containing 10ug of transfection-ready, dried plasmid DNA (reconstitute with 100 ul of water).

Reconstitution Method:

1. Centrifuge at 5,000xg for 5min.
2. Carefully open the tube and add 100ul of sterile water to dissolve the DNA.
3. Close the tube and incubate for 10 minutes at room temperature.
4. Briefly vortex the tube and then do a quick spin (less than 5000xg) to concentrate the liquid at the bottom.
5. Store the suspended plasmid at -20°C. The DNA is stable for at least one year from date of shipping when stored at -20°C.

RefSeq: [NM_177088.3](#), [NP_796062.2](#)

RefSeq Size: 2737 bp

RefSeq ORF: 2484 bp

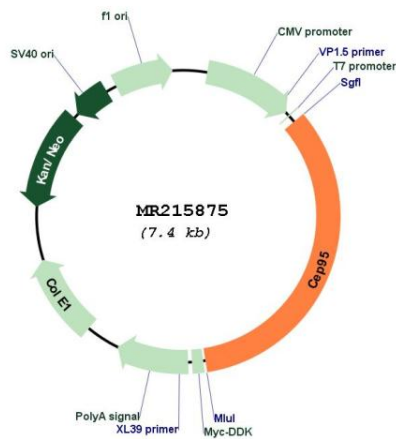
Locus ID: 320162

UniProt ID: [Q8BVV7](#)

Cytogenetics: 11 E1

MW: 95.7 kDa

Product images:



Circular map for MR215875